

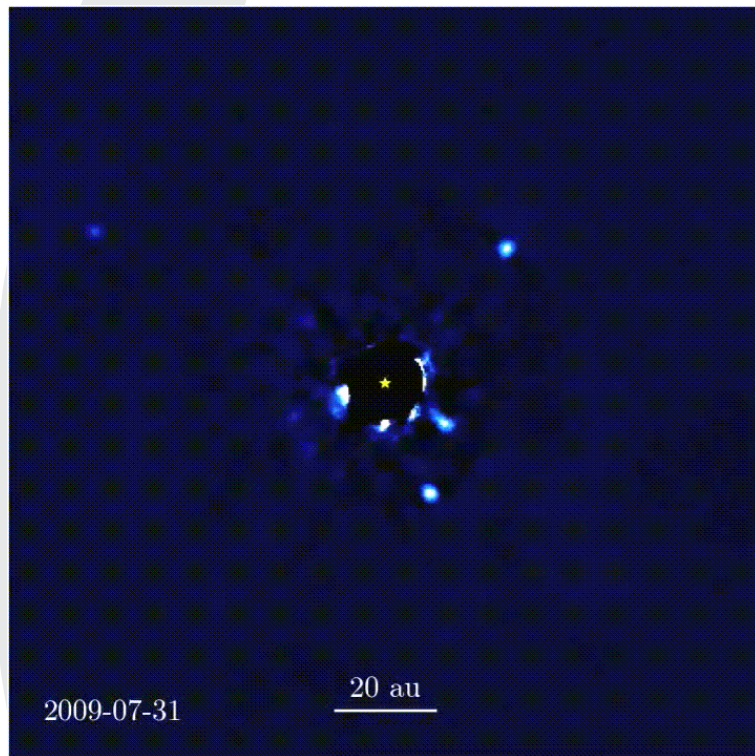


Data Mining the **Hubble Archives** to **image Extrasolar Systems**

Elodie Choquet

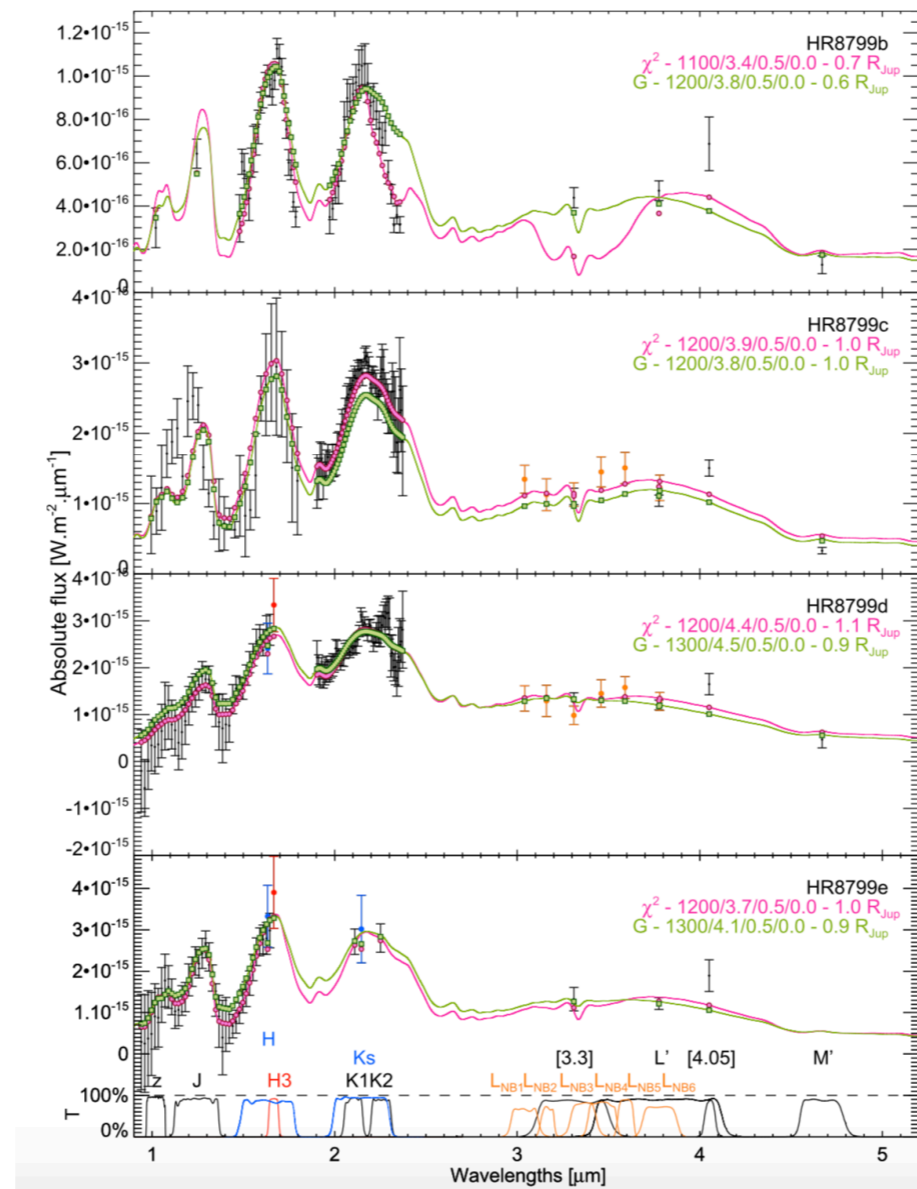
Direct Imaging of exoplanetary systems

Planets Dynamics



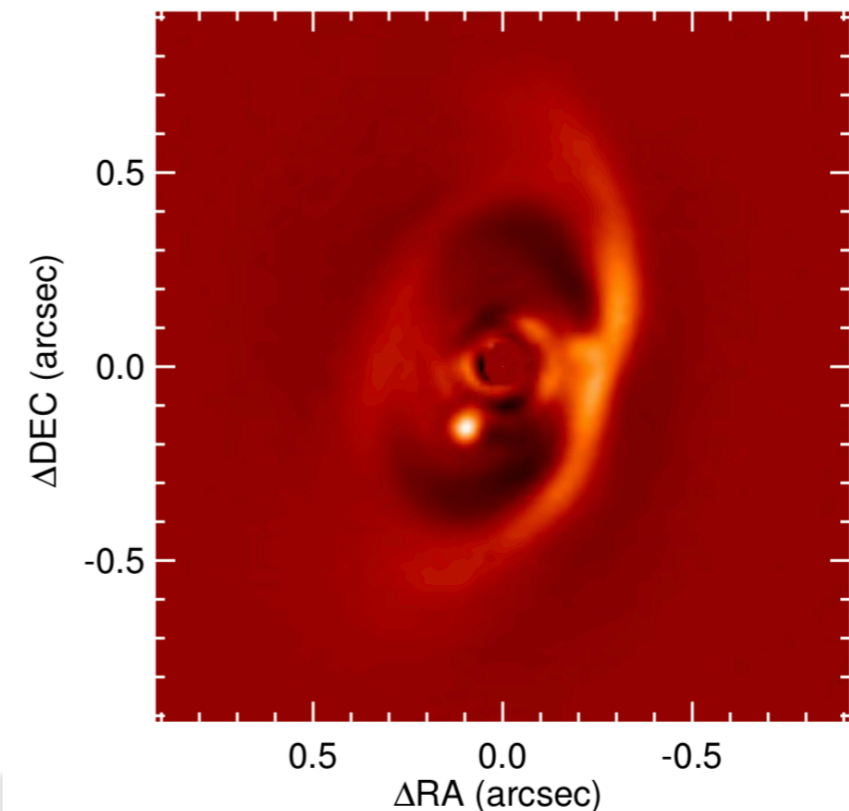
Courtesy J. Wang

Planet Atmospheres



Bonnefoy et al. 2016

Planet Formation

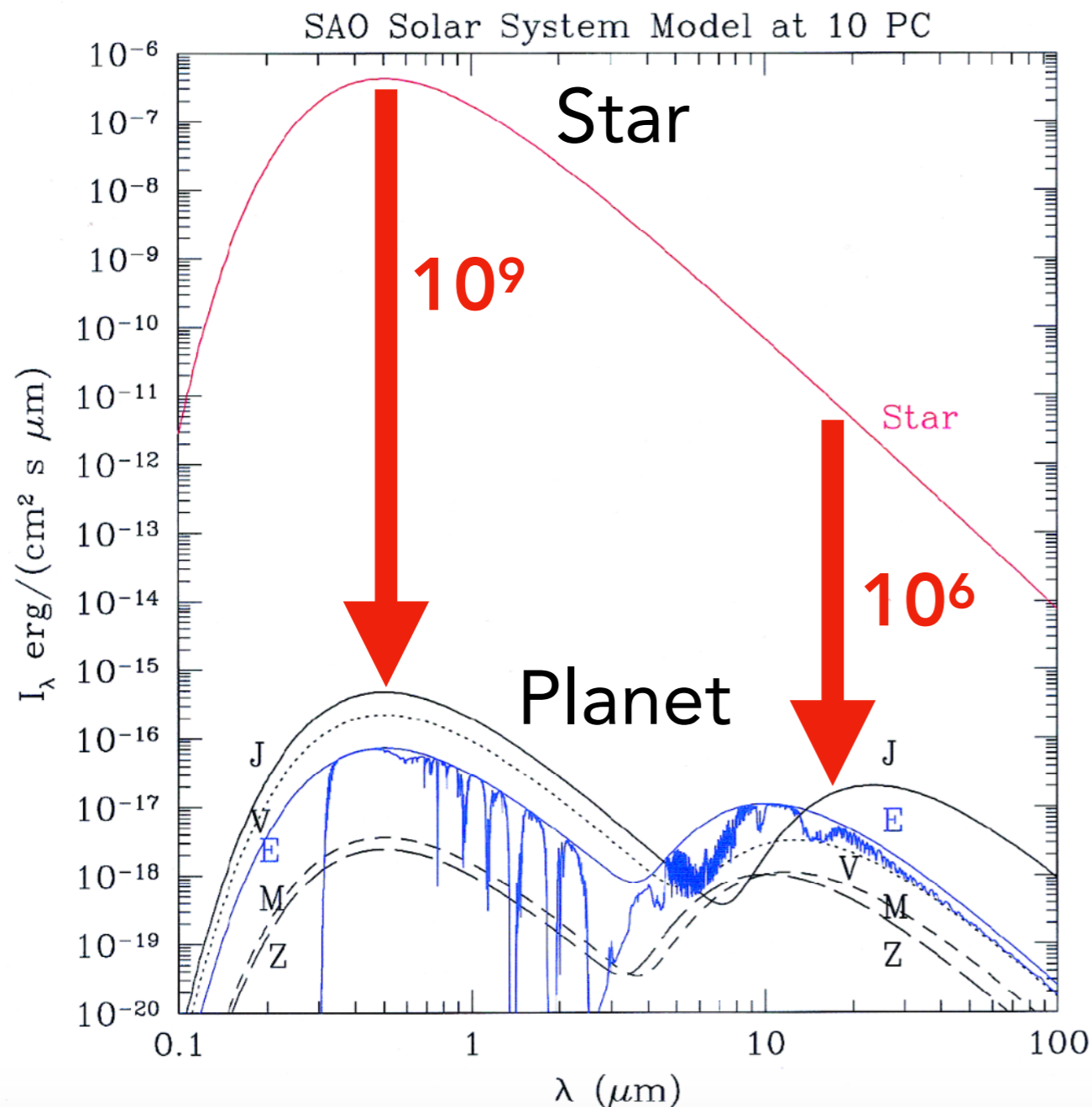


Müller et al. 2018

Direct Imaging: Challenges

Extreme contrast ratio...

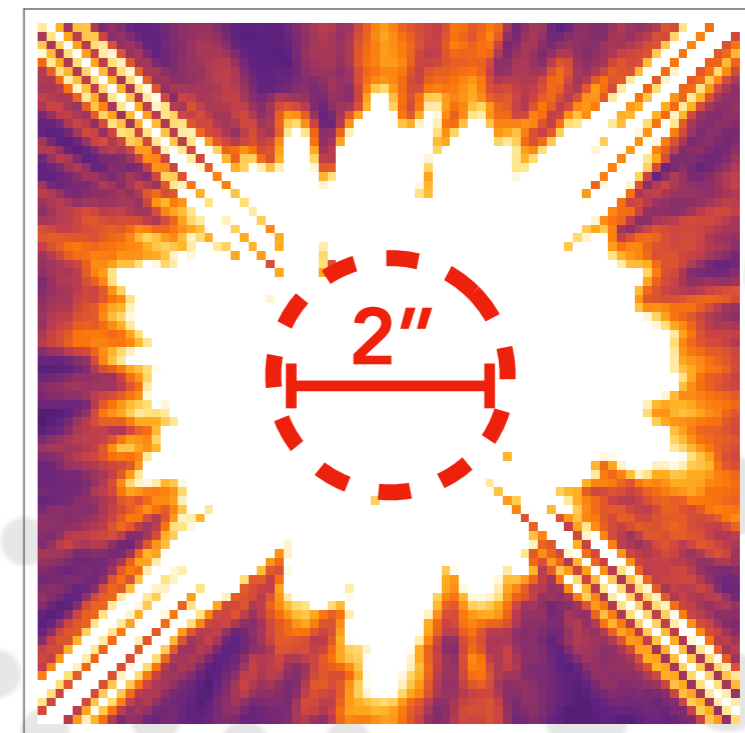
... at Small Separations



10 AU at 50 pc \Rightarrow 0.2''

VLT @ $2\mu\text{m}$ \Rightarrow $\lambda/D = 0.05''$

HST @ $1\mu\text{m}$ \Rightarrow $\lambda/D = 0.09''$



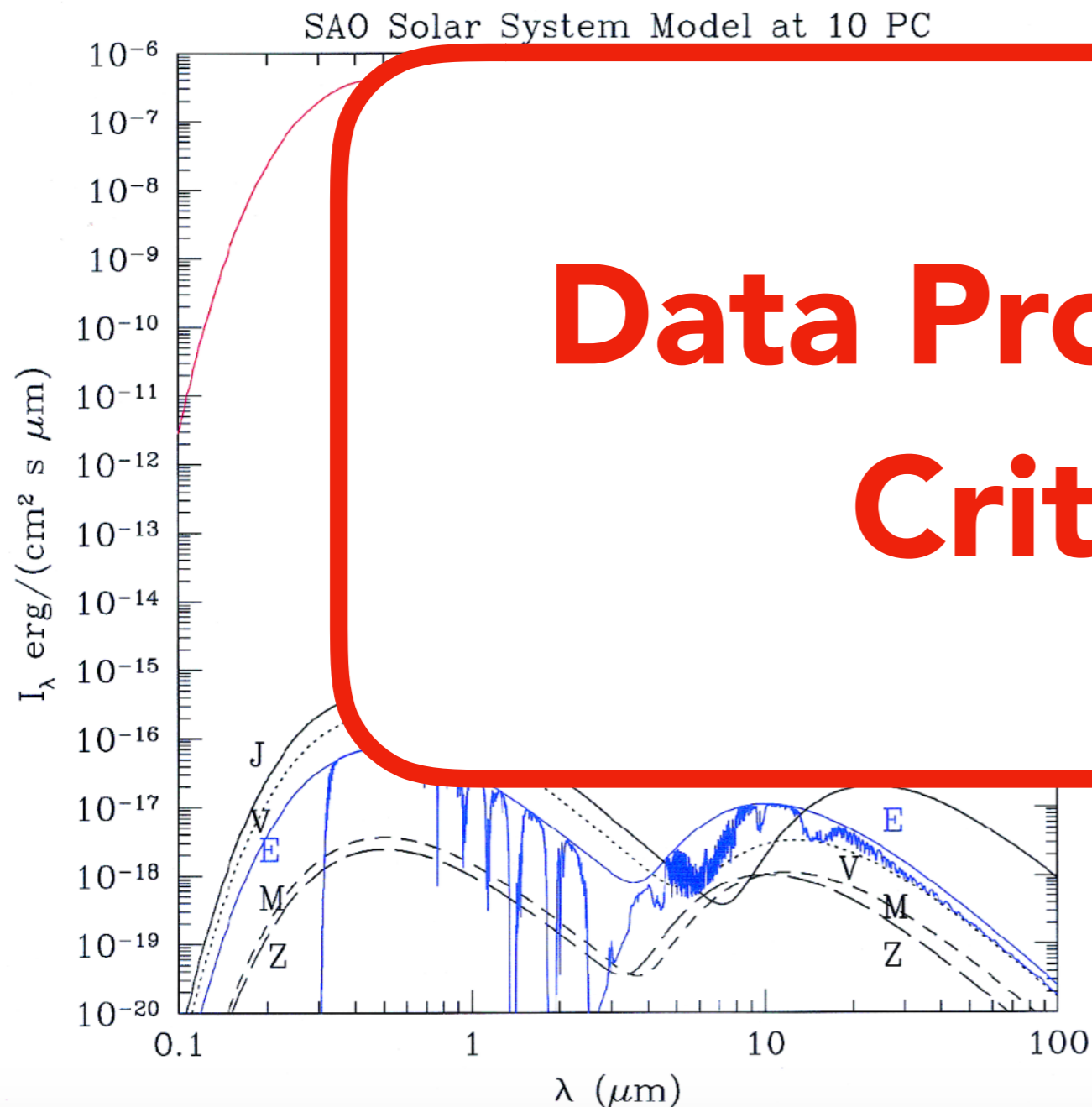
HST, NICMOS

Direct Imaging: Challenges

Extreme contrast ratio...

... at Small Separations

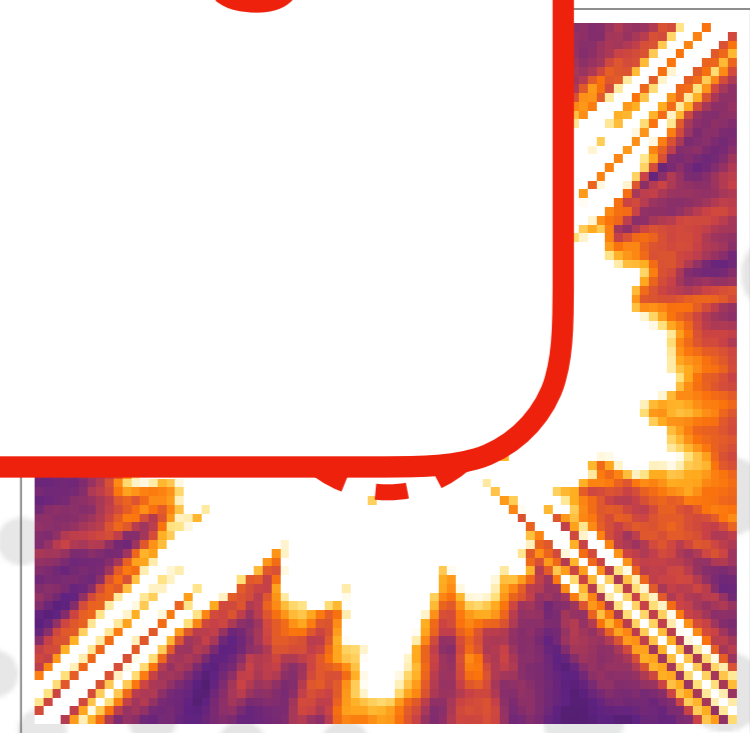
**Data Processing
Critical**



=> 0.2"

= 0.05"

= 0.09"

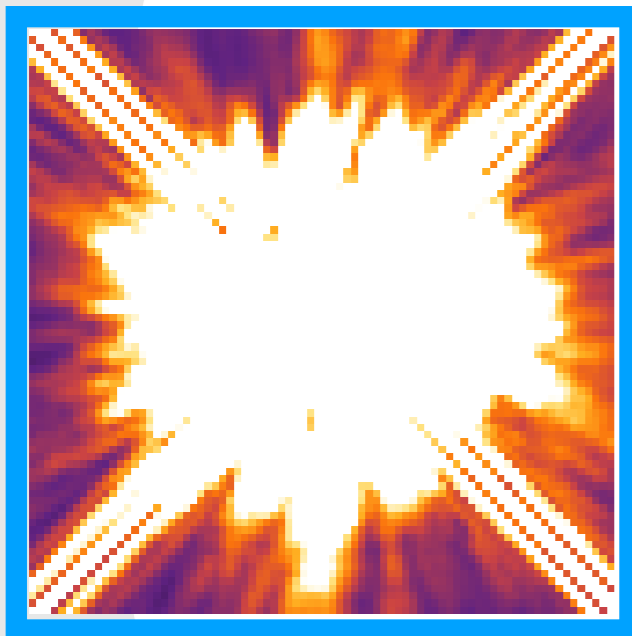


HST, NICMOS

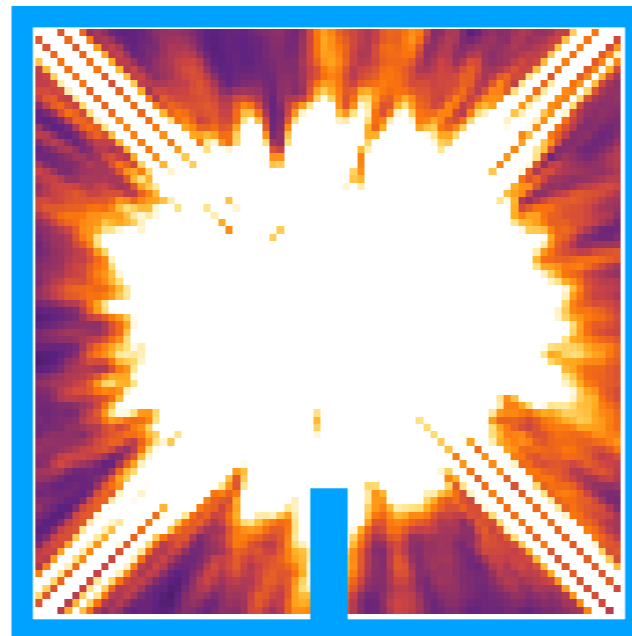
Data Processing Method

Differential Imaging (DI)

Science Image



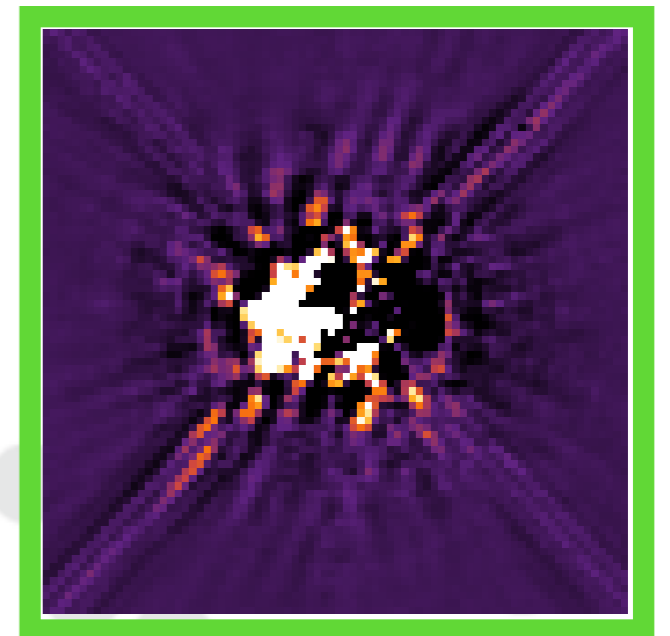
PSF Image



—

=

Residual Image

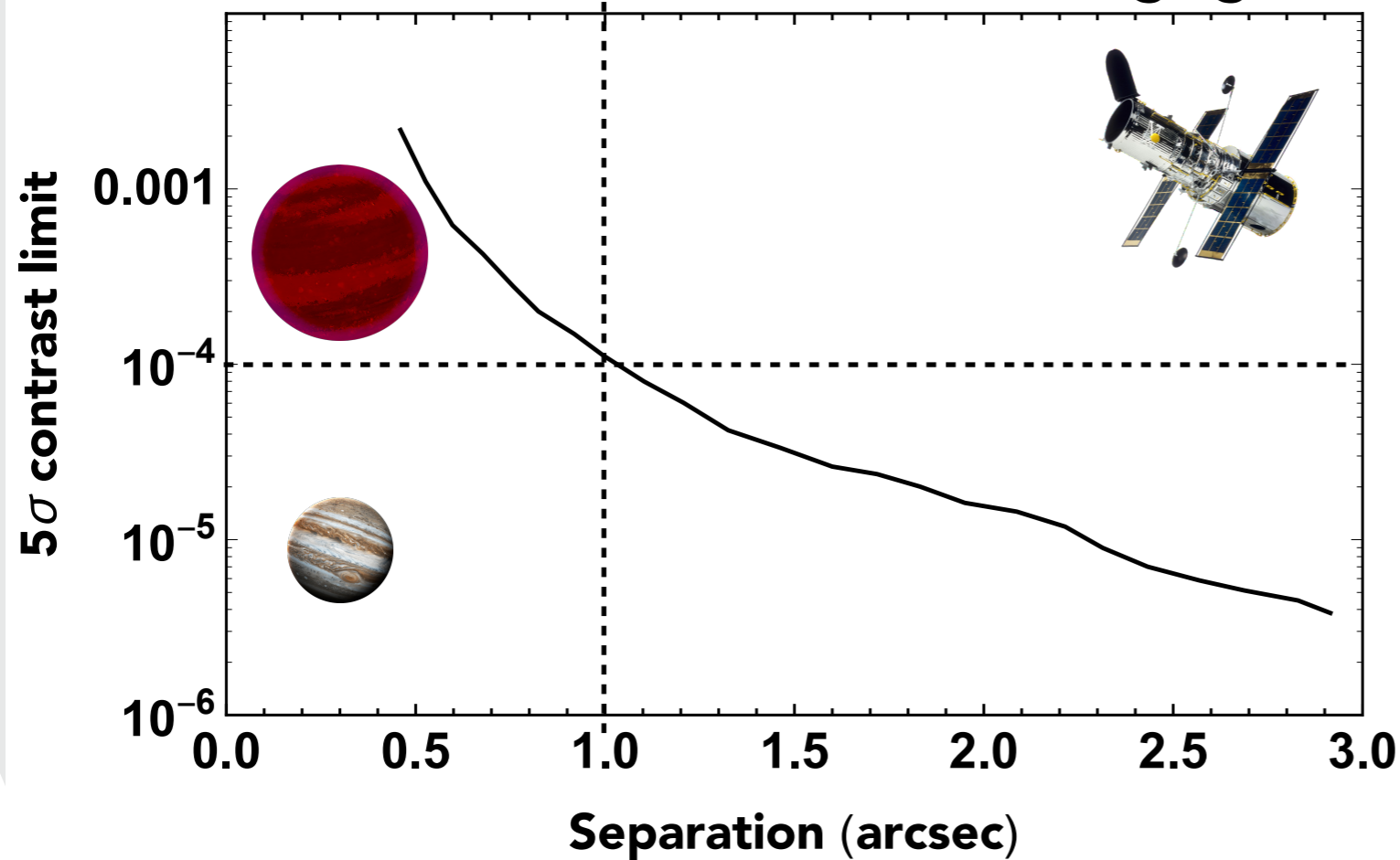


Reference Star
Science Star with Scene Rotated

Data Processing Method

Differential Imaging (DI)

Median Limits Differential Imaging



Lowrance et al. 2005

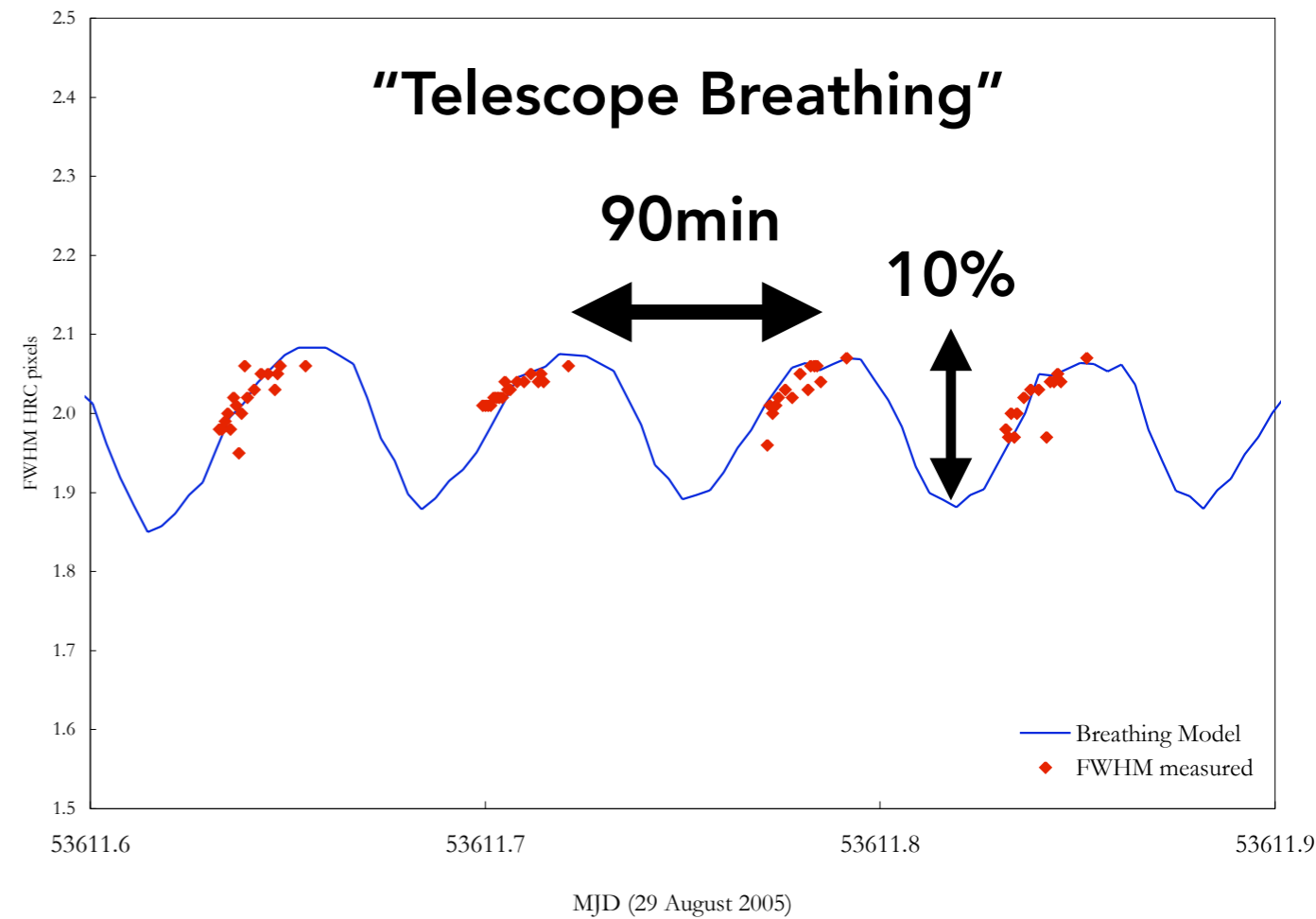
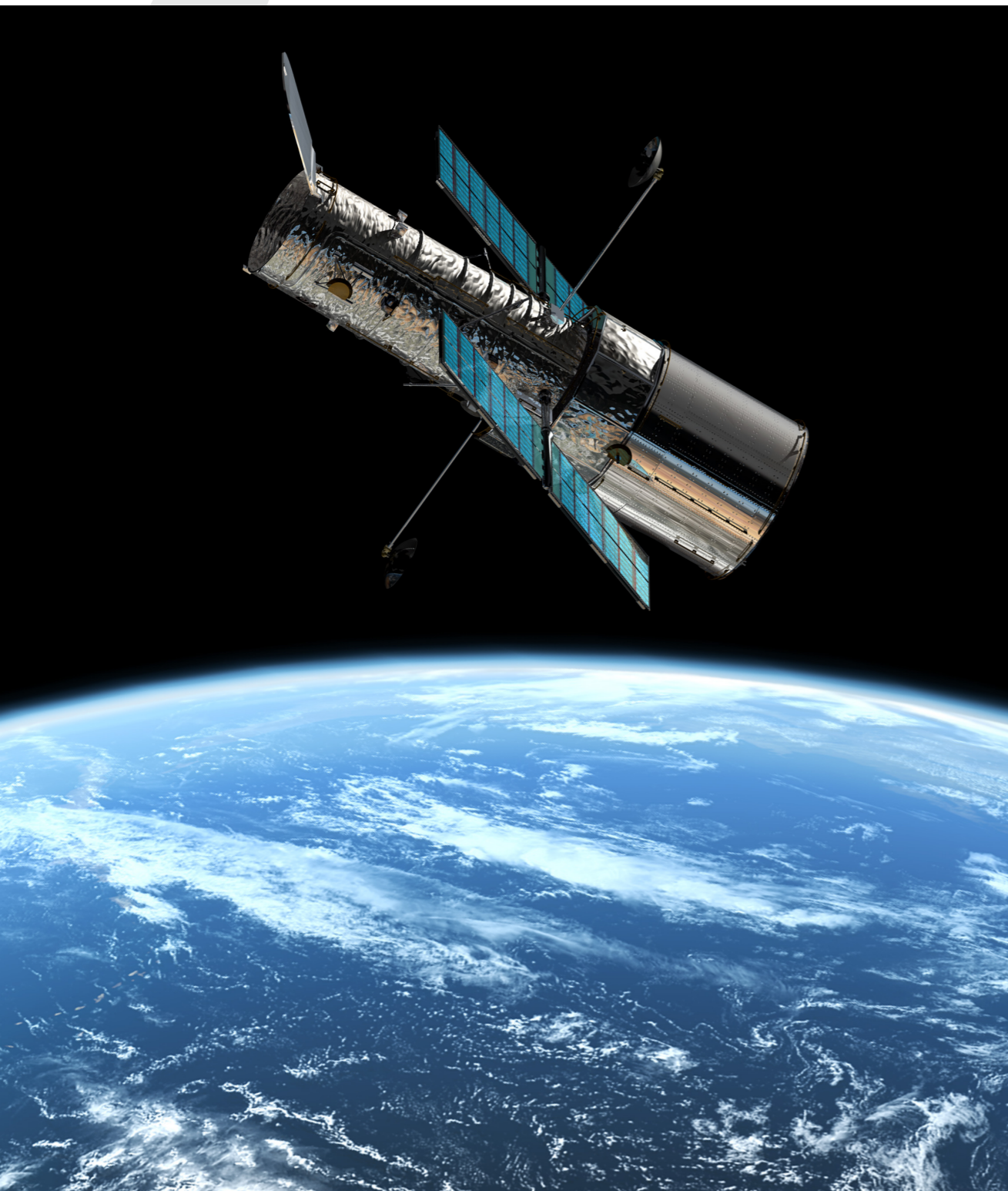
Residual Image



Data Processing Challenges

PSF temporal variations

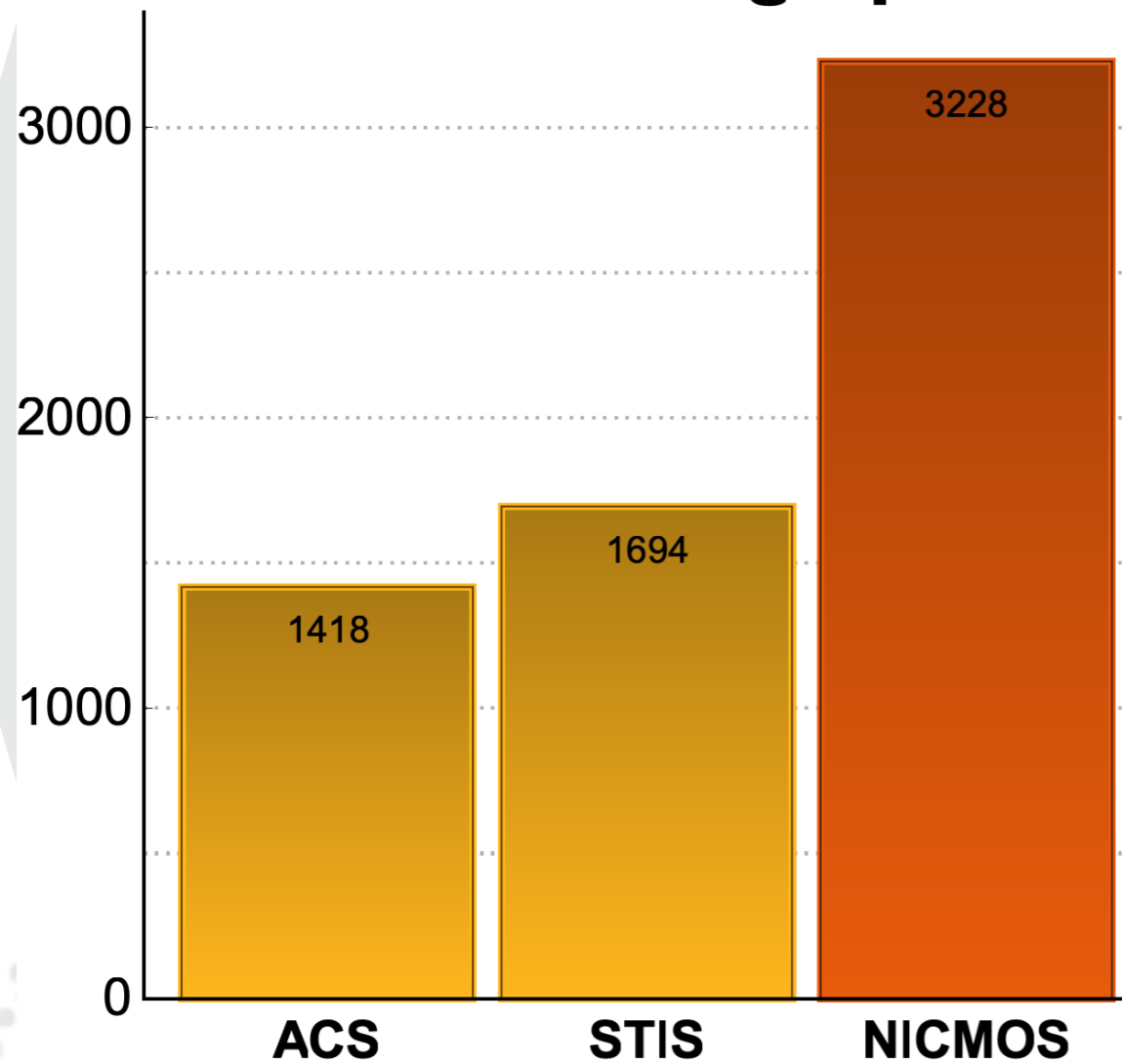
Short term FWHM oscillations



Lallo et al. 2006

Mining the Hubble Archives

HST Coronagraphs

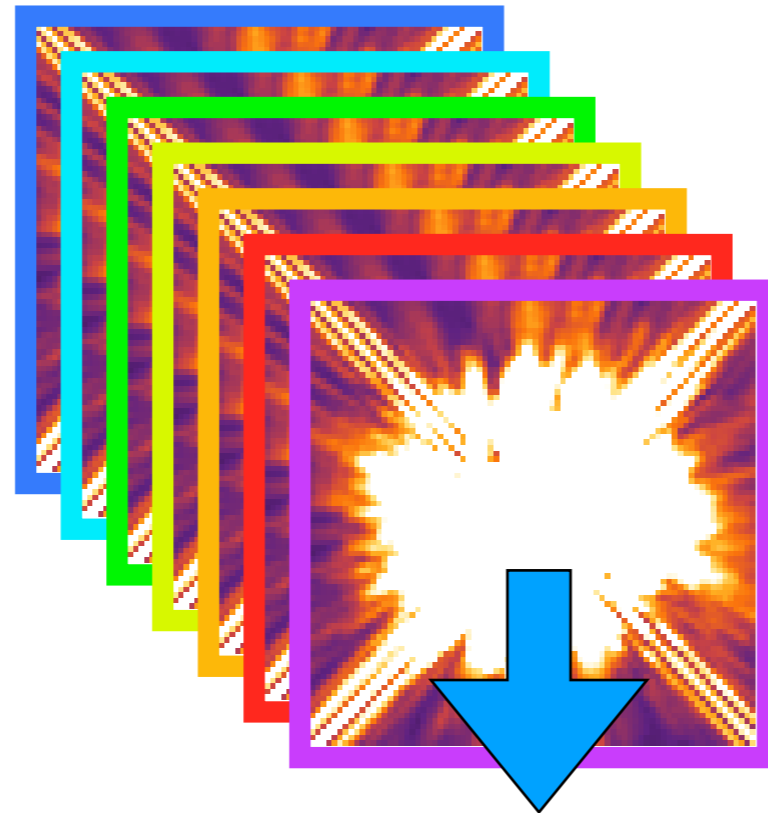


The NICMOS instrument

- ▶ In operation for 8 yr
- ▶ Coronagraph: $R=0.3''$
- ▶ Near-IR (mainly J & H)

- ▶ 400 targets observed
- ▶ Goals: Planets, disks
- ▶ **5600 images**

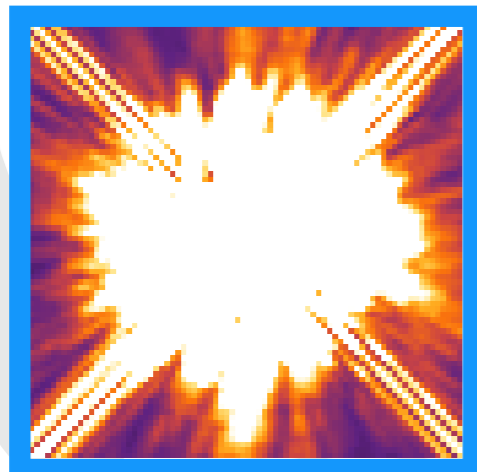
Archival PSF libraries



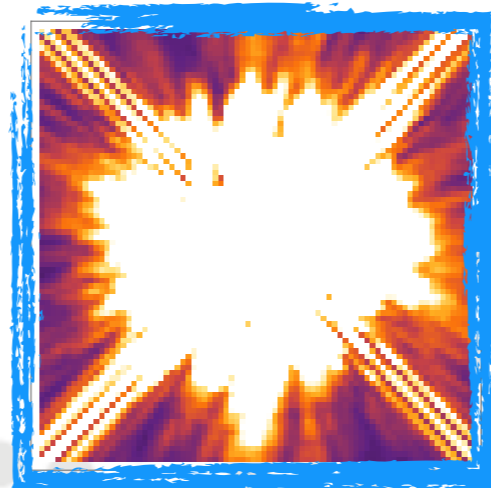
Archival Library

- ▶ 10^2 Reference stars
- ▶ 10^3 PSF images
- ▶ Samples tmp variations

Science Image



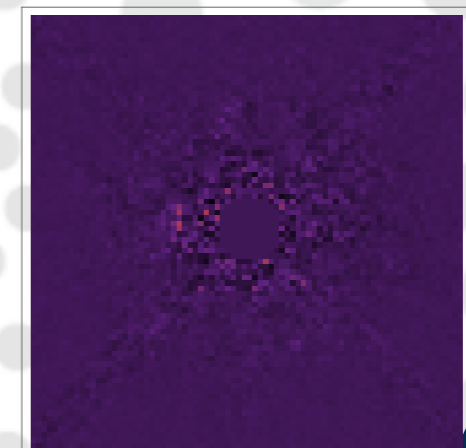
Model



-

=

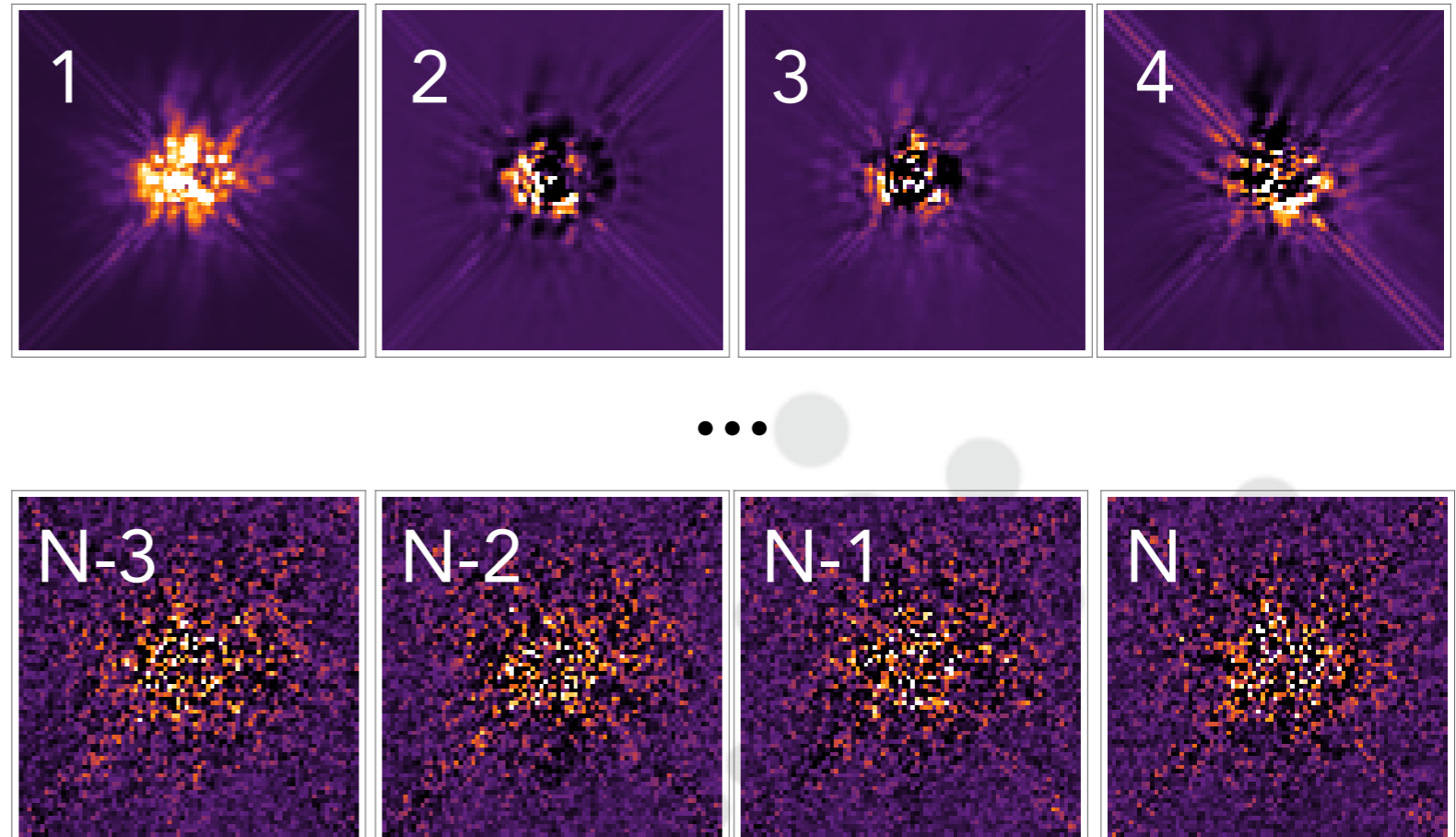
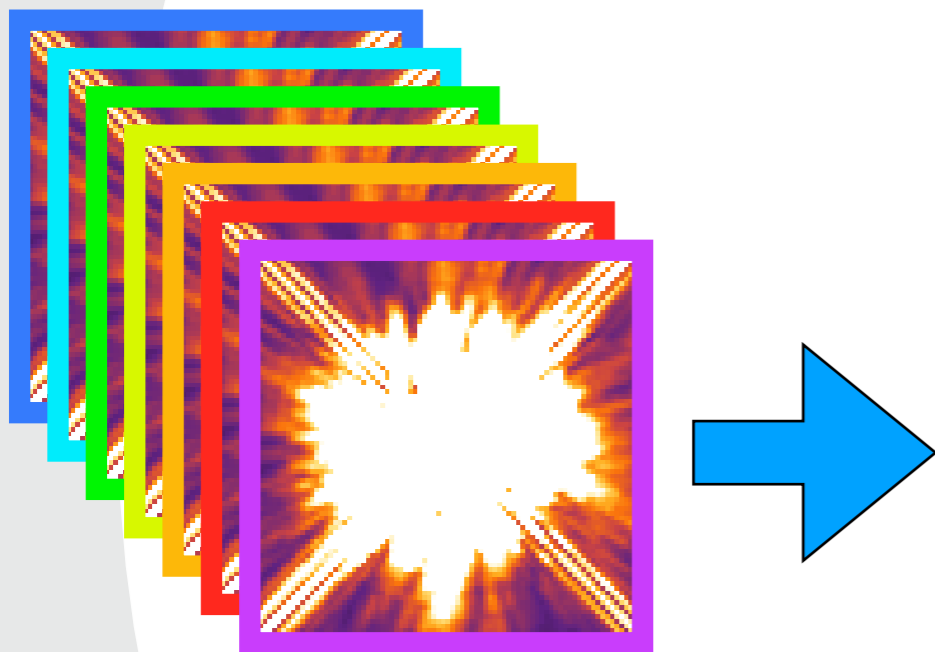
Residual Image



Principal Component Analysis (PCA)

Machine Learning Algorithm to create the PSF Model

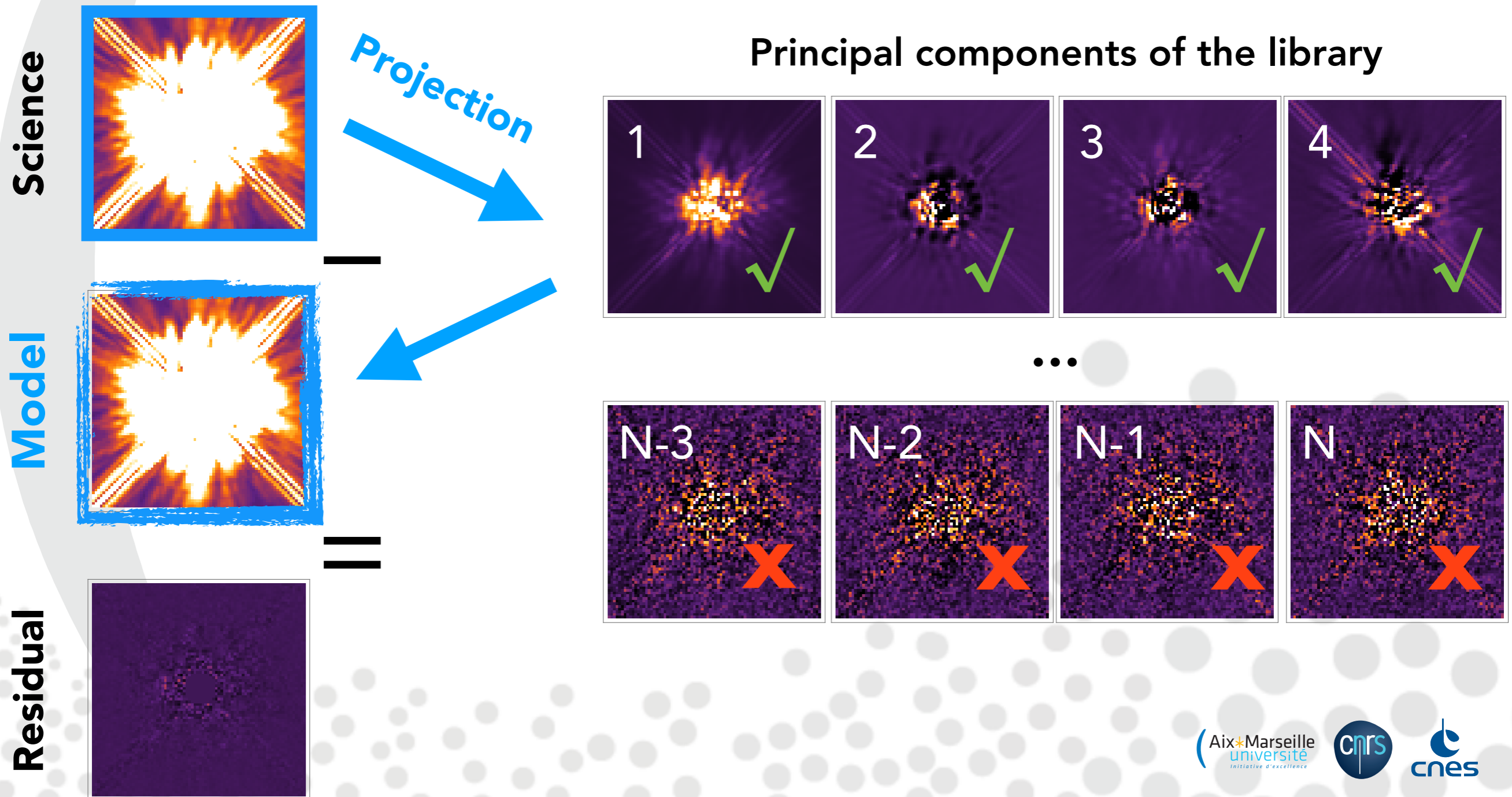
Principal components of the library



Soummer et al. 2012

Principal Component Analysis (PCA)

Machine Learning Algorithm to create the PSF Model



The ALICE Projet

Archival **L**ibrary **I**vestigations for **C**ircumstellar **E**nvironments

PI: Rémi Soummer (STScI)

- ▶ Consistent re-analysis of the whole NICMOS archive
- ▶ Data delivered back to the community
- ▶ <https://archive.stsci.edu/prepds/alice/>

Hagan et al. 2018

Barbara A. MIKULSKI ARCHIVE OF SPACE TELESCOPES

MAST | STScI | Tools | Mission Search | Search Website | Follow Us | Register | Forum

About MAST | Getting Started

Archival Legacy Investigations of Circumstellar Environments (ALICE)

[Primary Reference Document](#)

See also (hover for titles):

[Soummer et al. \(2012\), *ApJL*, 755, 28](#)
[Choquet et al. \(2016\), *ApJL*, 817, 2](#)
[Debes et al. \(2016\), *JATIS*, 2a1010D](#)
[Milli et al. \(2017\), *A&A*, 597, 2](#)

[Soummer et al. \(2014\), *ApJL*, 786, 23](#)
[Mazoyer et al. \(2016\), *ApJ*, 818, 150](#)
[Choquet et al. \(2015\), *SPIE*, 9605, 1](#)

[Choquet et al. \(2014\), *SPIE*, 9143, 57](#)
[Soummer et al. \(2011\), *ApJ*, 741, 55](#)
[Milli et al. \(2015\), *A&A*, 577, 57](#)

[Rajan et al. \(2015\), *ApJL*, 809, 33](#)
[Choquet et al. \(2017\), *ApJL*, 834, 12](#)
[Choquet et al. \(2014\), *SPIE*, 9147, 51](#)

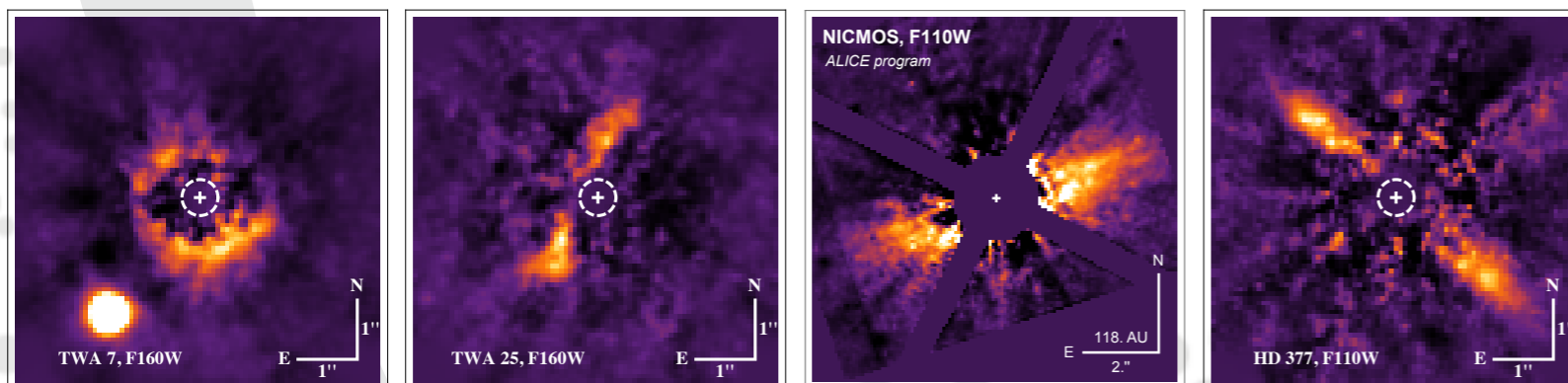
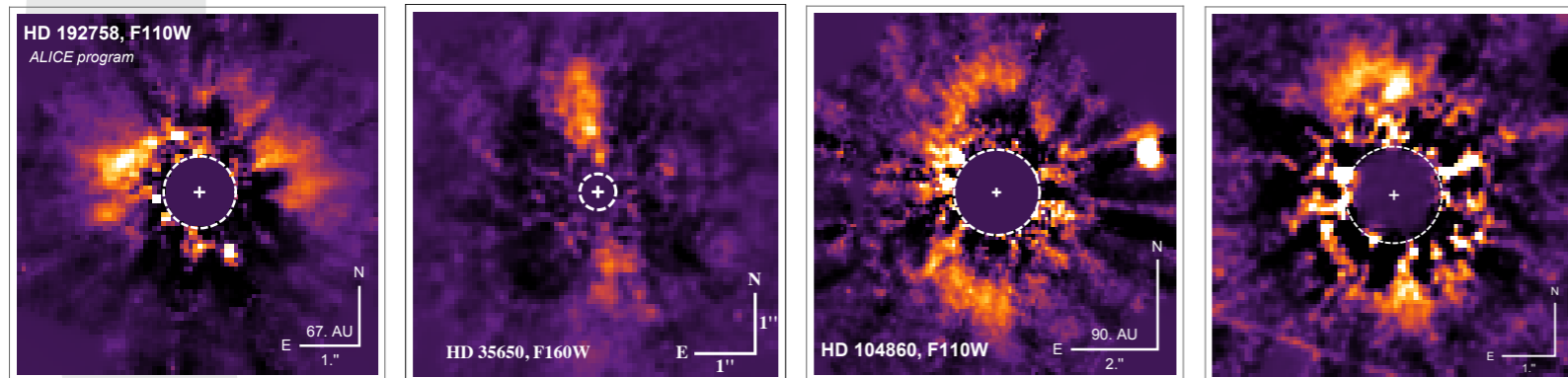
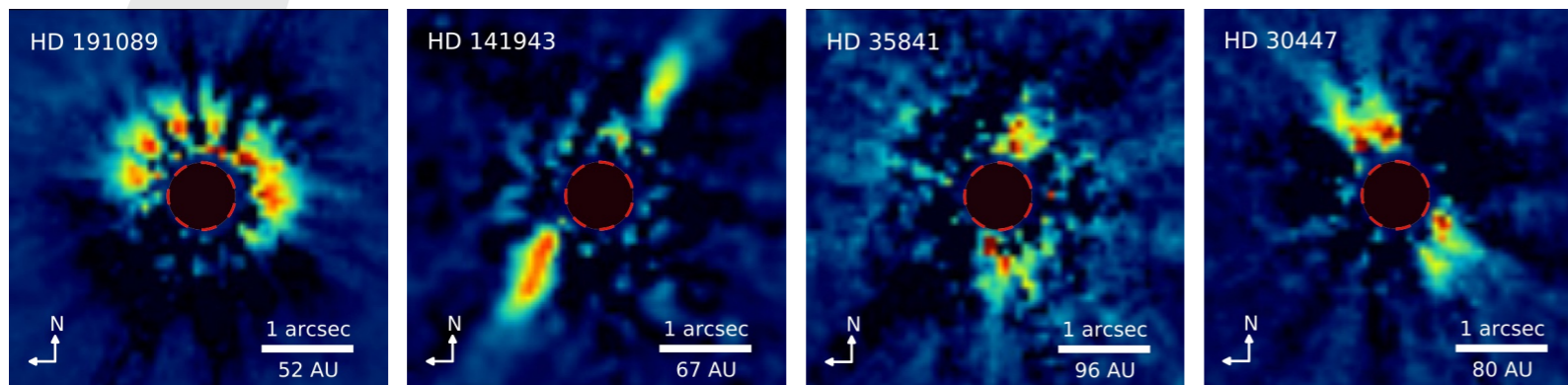
[Introduction](#)

[Data Products](#)

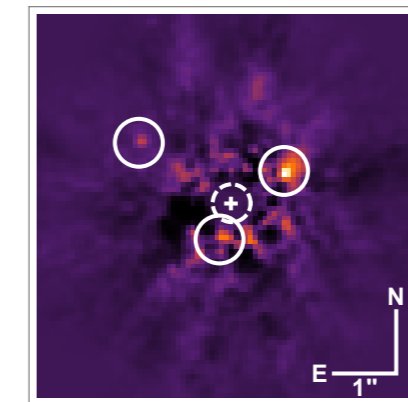
[Data Access](#)

Detection gallery

New Debris Disks

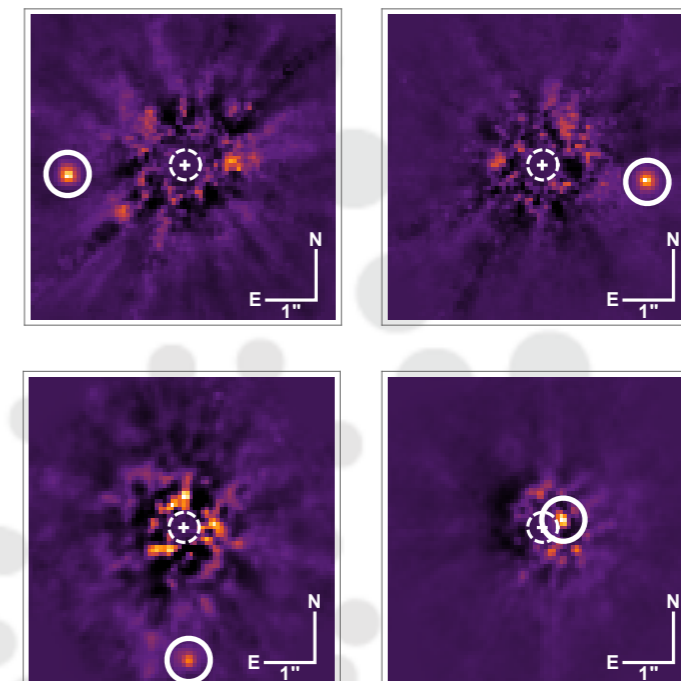


Known Planets (HR 8799)

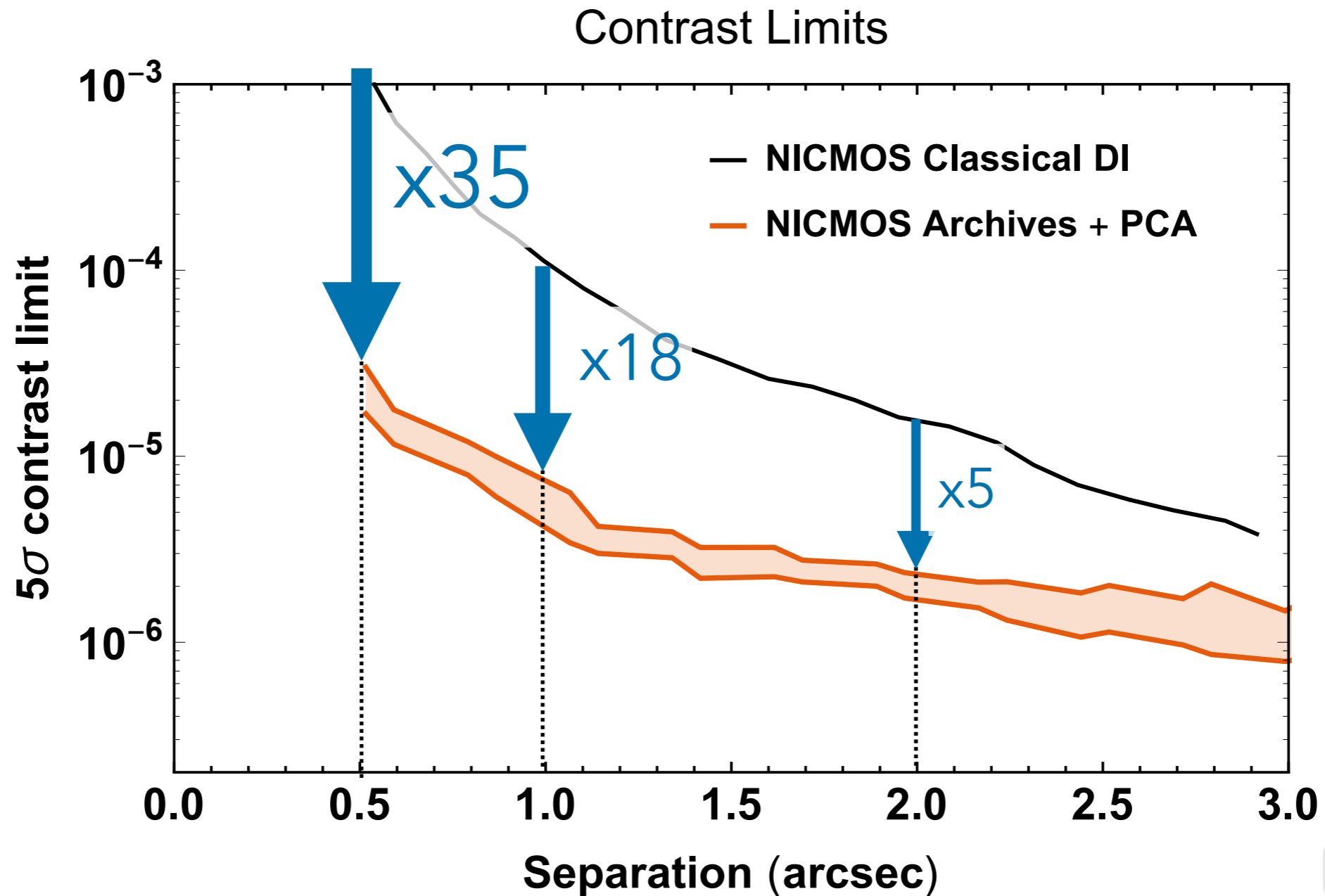


Soummer et al. 2011
Soummer et al. 2014
Choquet et al. 2016
Choquet et al. 2017
Choquet et al. 2018
Marshall et al. 2018

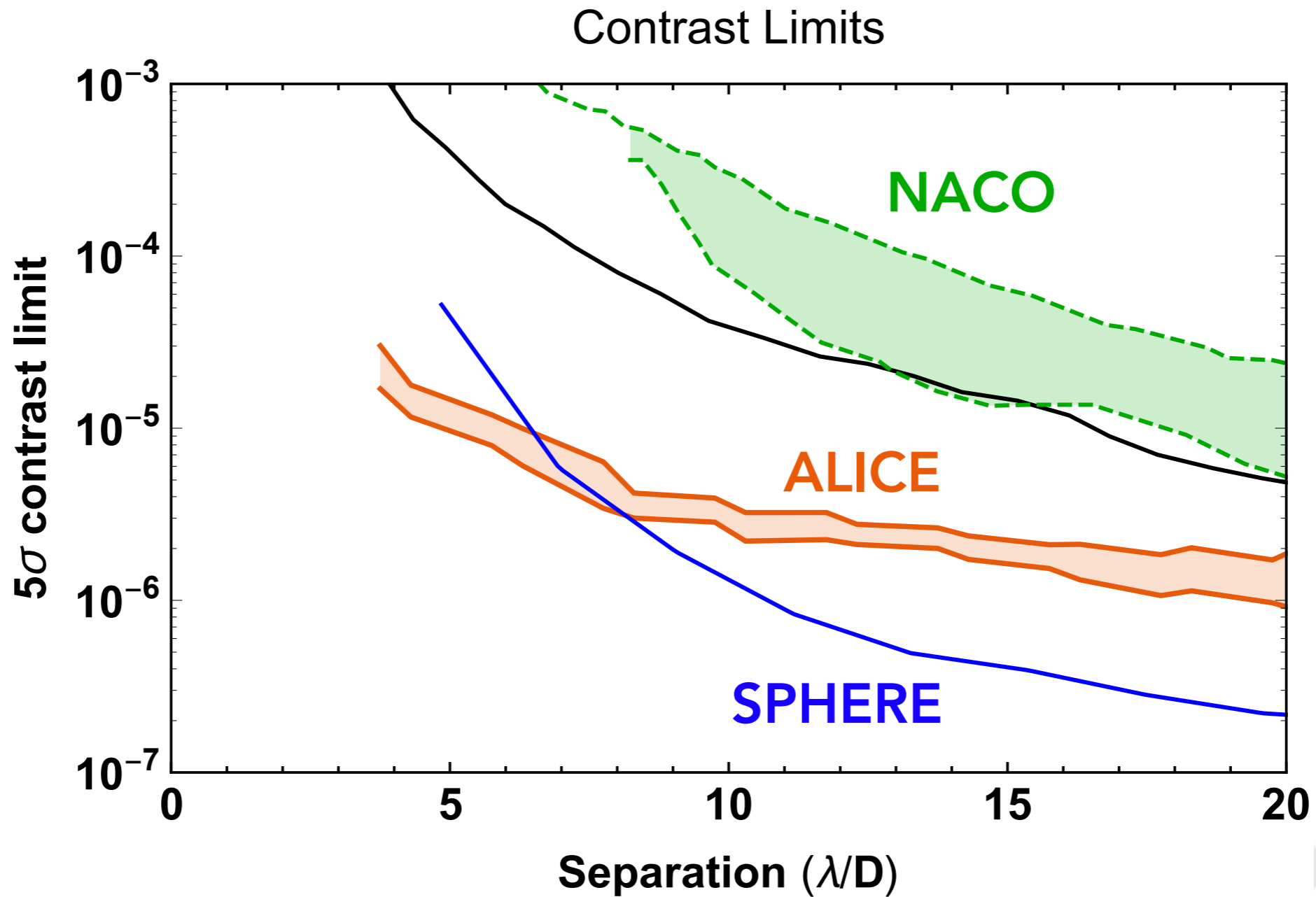
Many new candidates



Improved detection limits



Improved detection limits



In λ/D
units

Summary

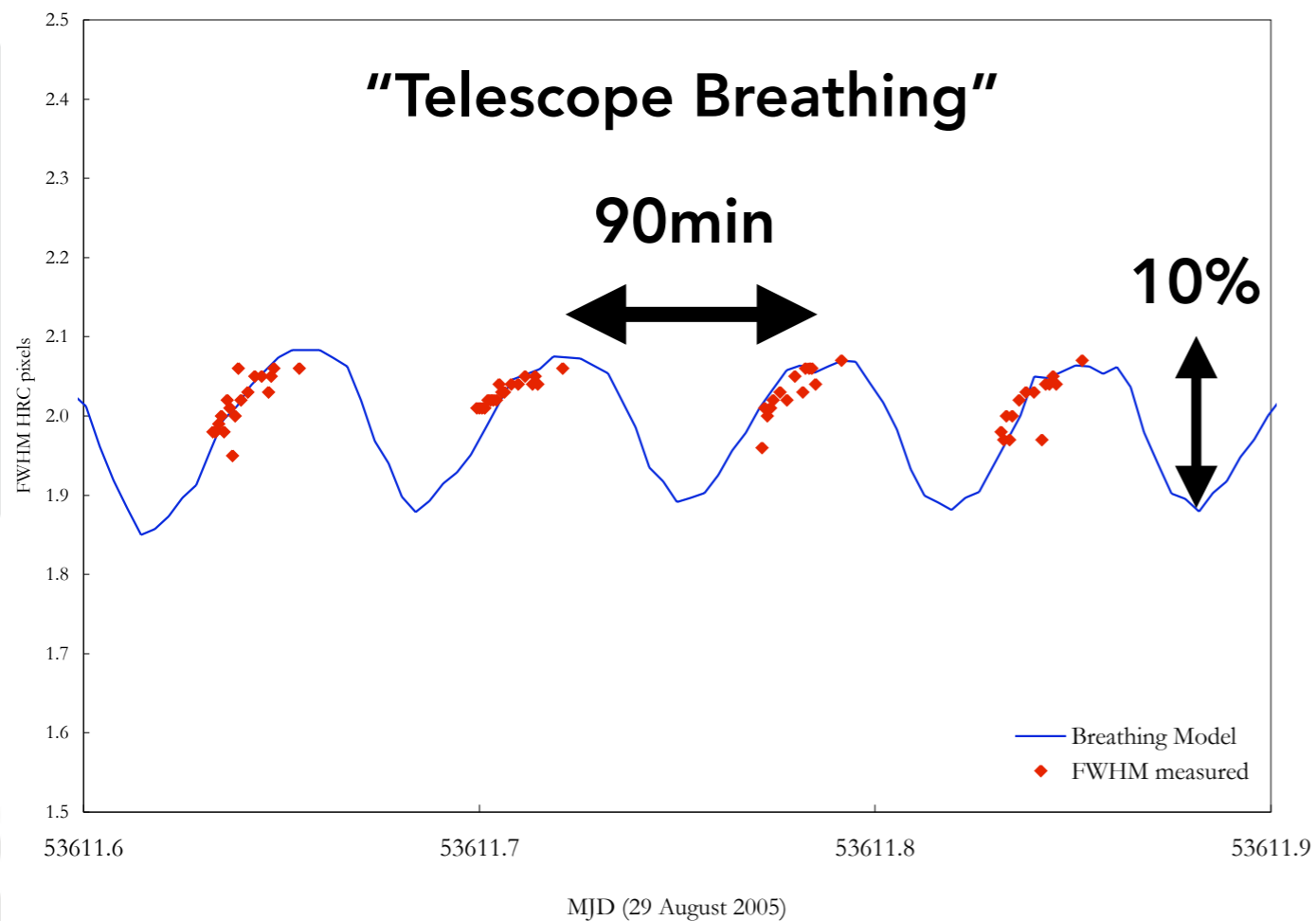
- ▶ Successful mining of the HST archives
- ▶ Project to apply the method to VLT-SPHERE archives
 - ▶ More temporal diversity (atmosphere)
 - ▶ More data in the archives (short exposures)
 - ▶ More contextual data (WFS, DIMM-MASS)

END

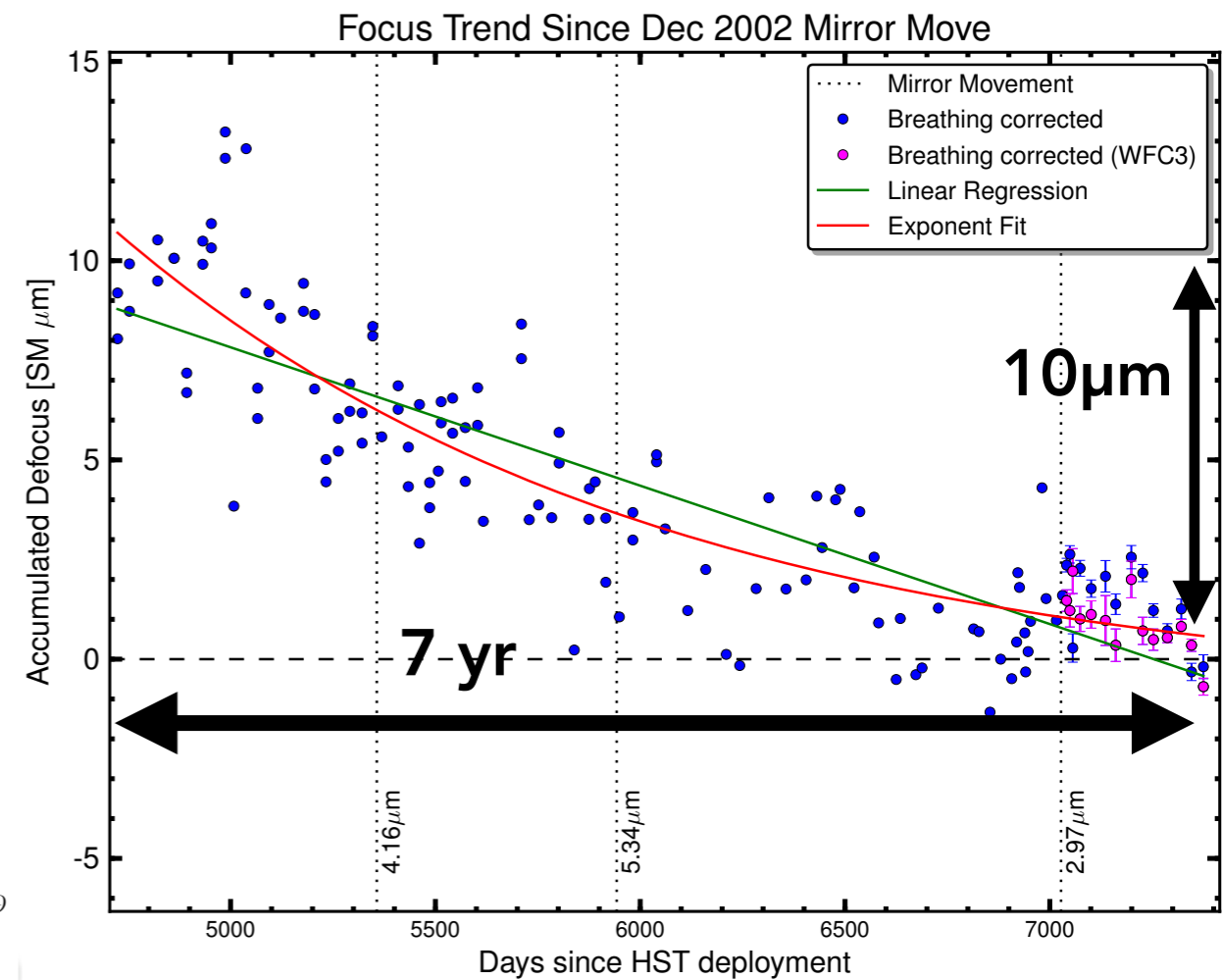
Data Processing Challenges

PSF temporal variations

Short term FWHM oscillations



Long term focus drift



Lallo et al. 2006