

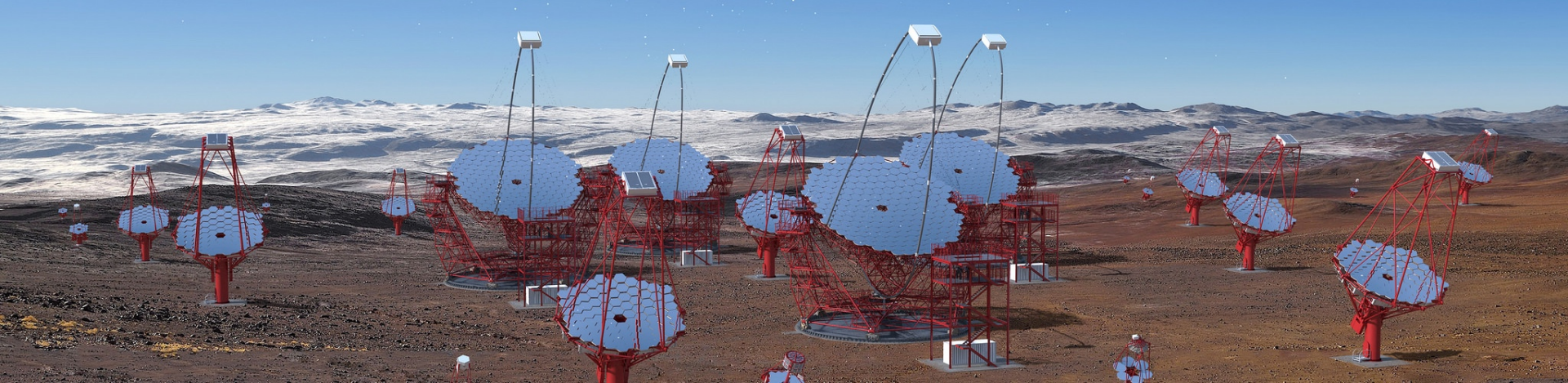
La Silla Paranal Observatory Users Workshop 2018

An aerial photograph of the La Silla Paranal Observatory at dusk. The image shows several large, cylindrical telescope enclosures on a concrete platform. Four orange beams of light originate from the top of the frame and converge on the central telescope enclosure, which is illuminated from within, showing its internal structure. The background consists of dark, rolling hills under a twilight sky.

Michael Sterzik
European Southern Observatory
Data Management and Operations

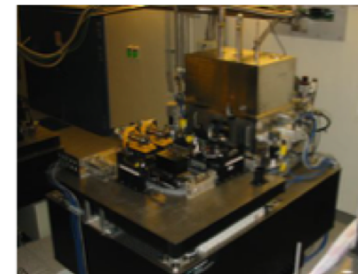
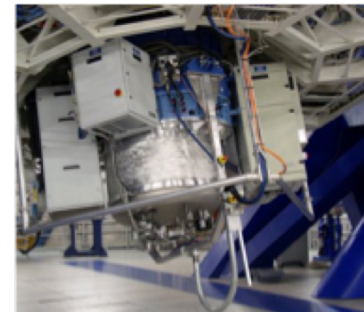
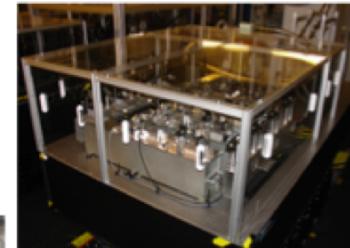
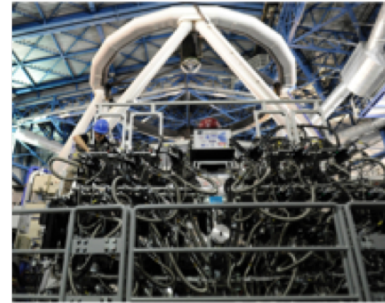
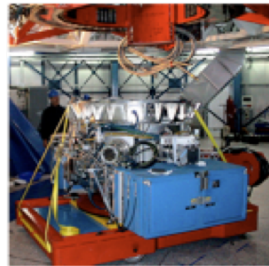
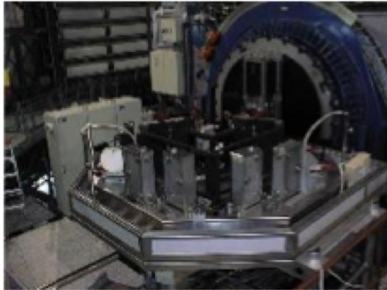
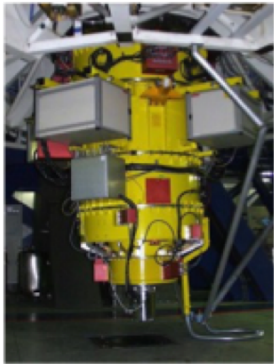
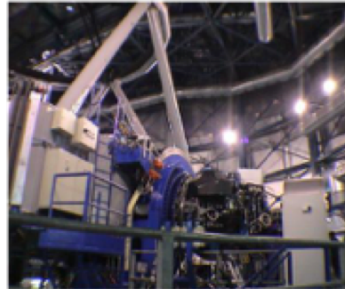
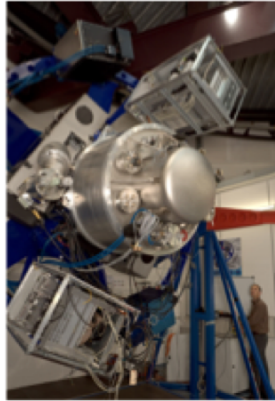


Powerful Telescopes

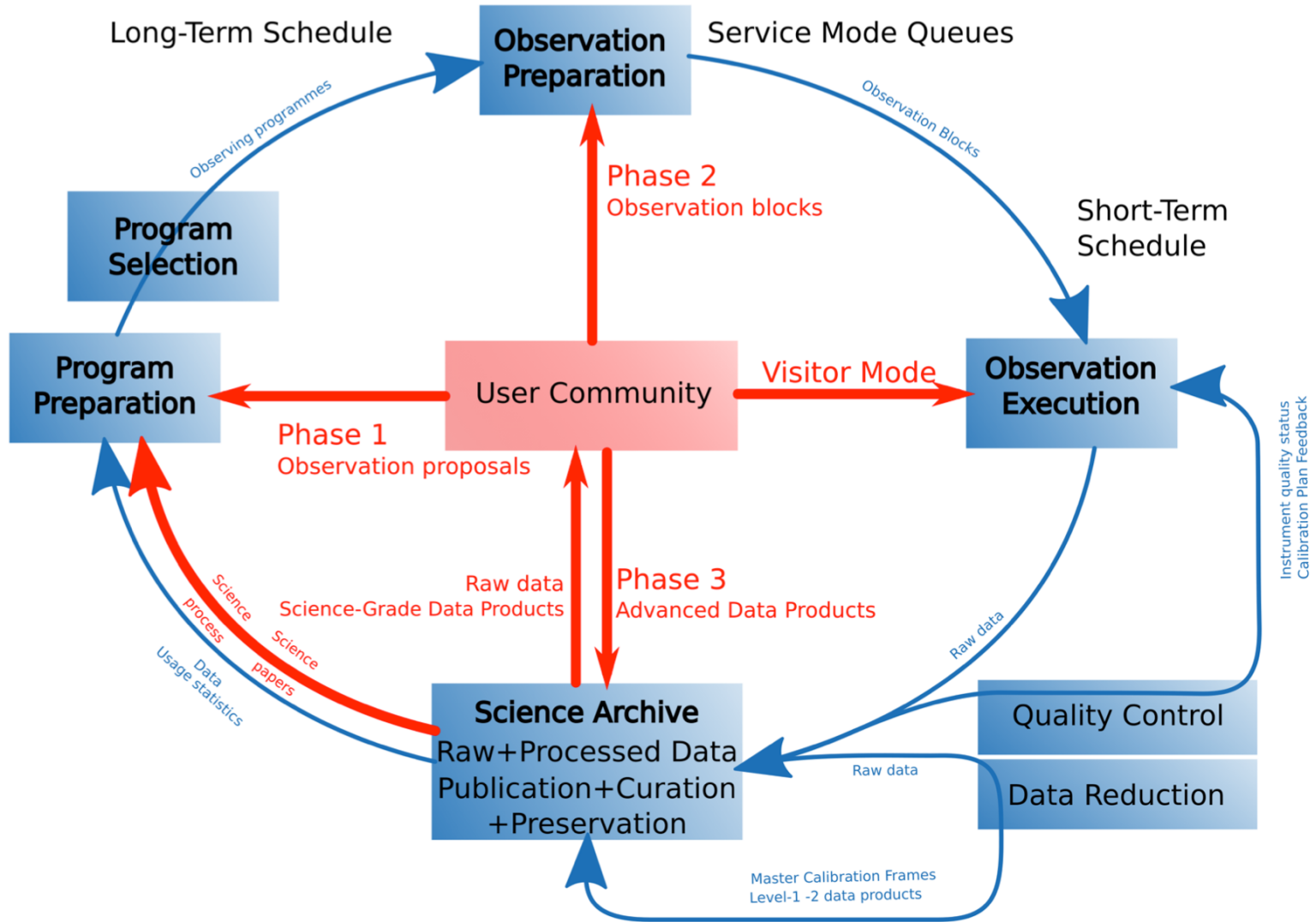




Powerful Instruments



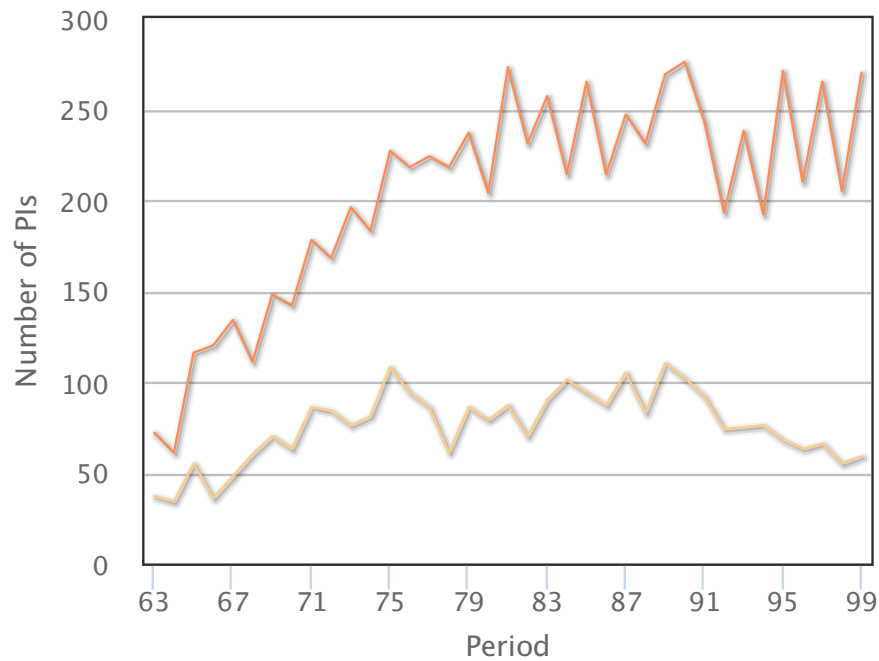
Operations - Model





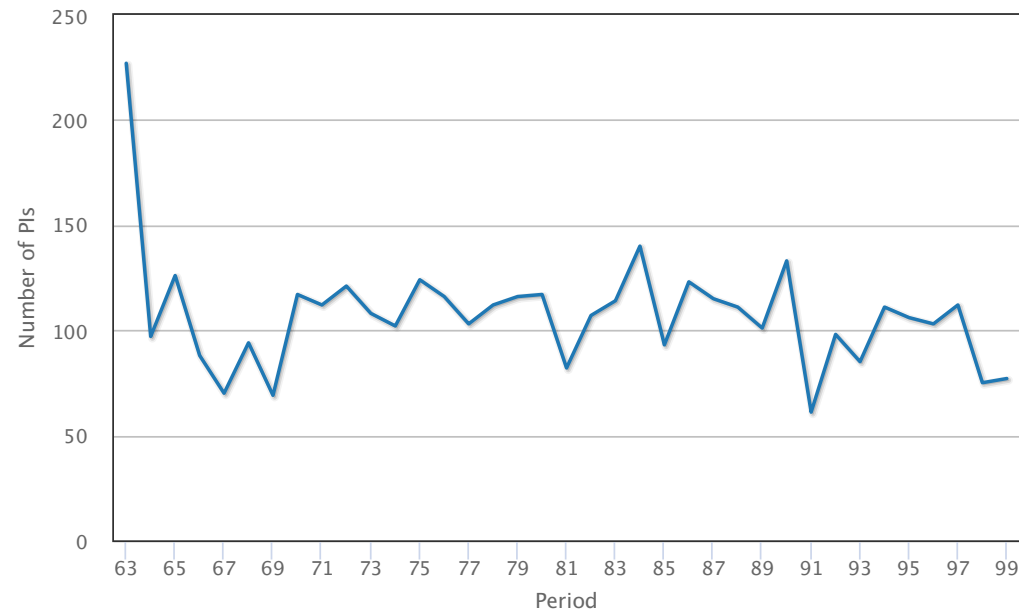
Active Science Community

Number of PIs per Period



300-400 PIs (= scheduled programs) per period

Number of **new** PIs per Period

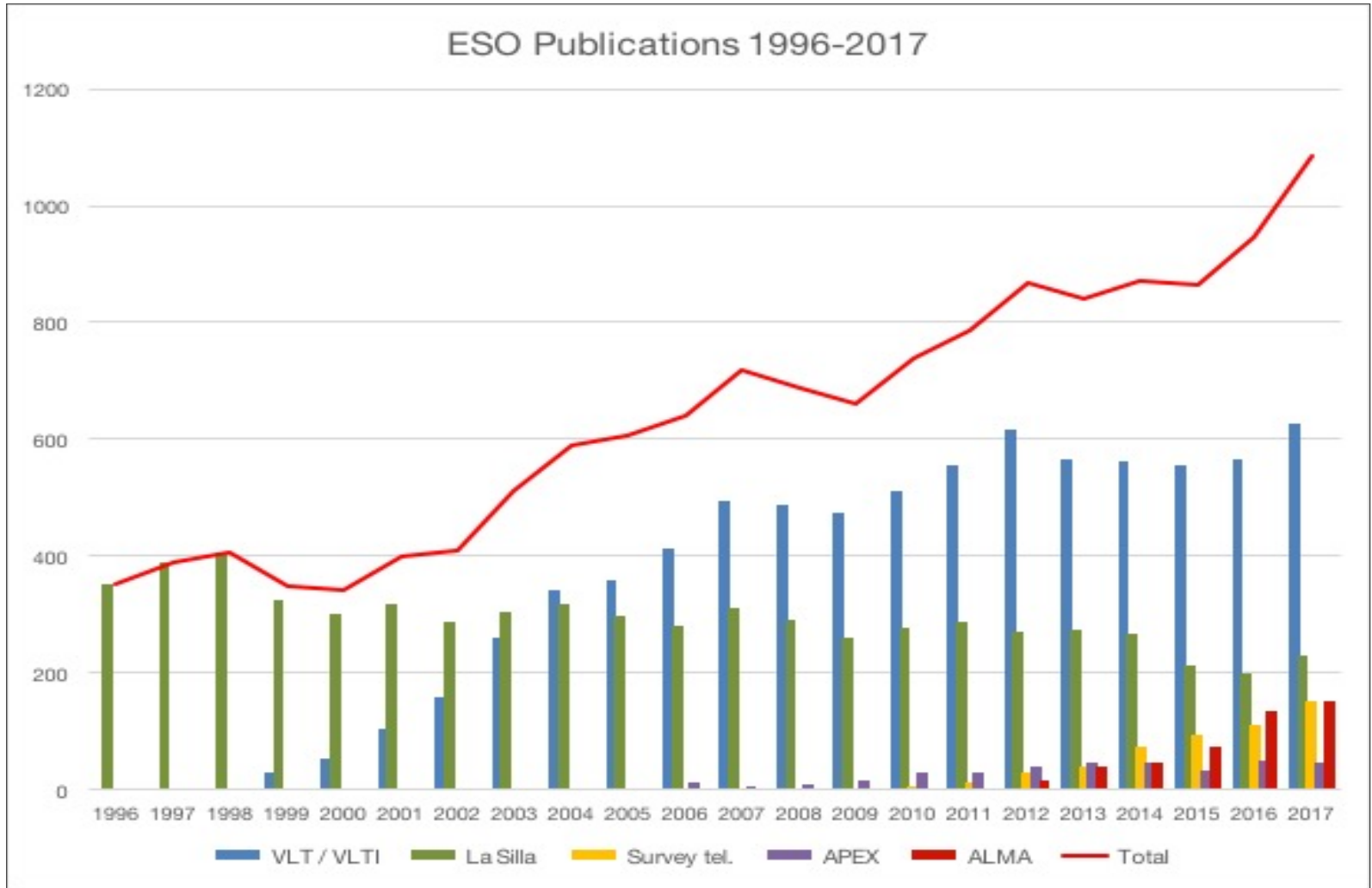


~100 **new** PIs (=programs) per period





Science Return!



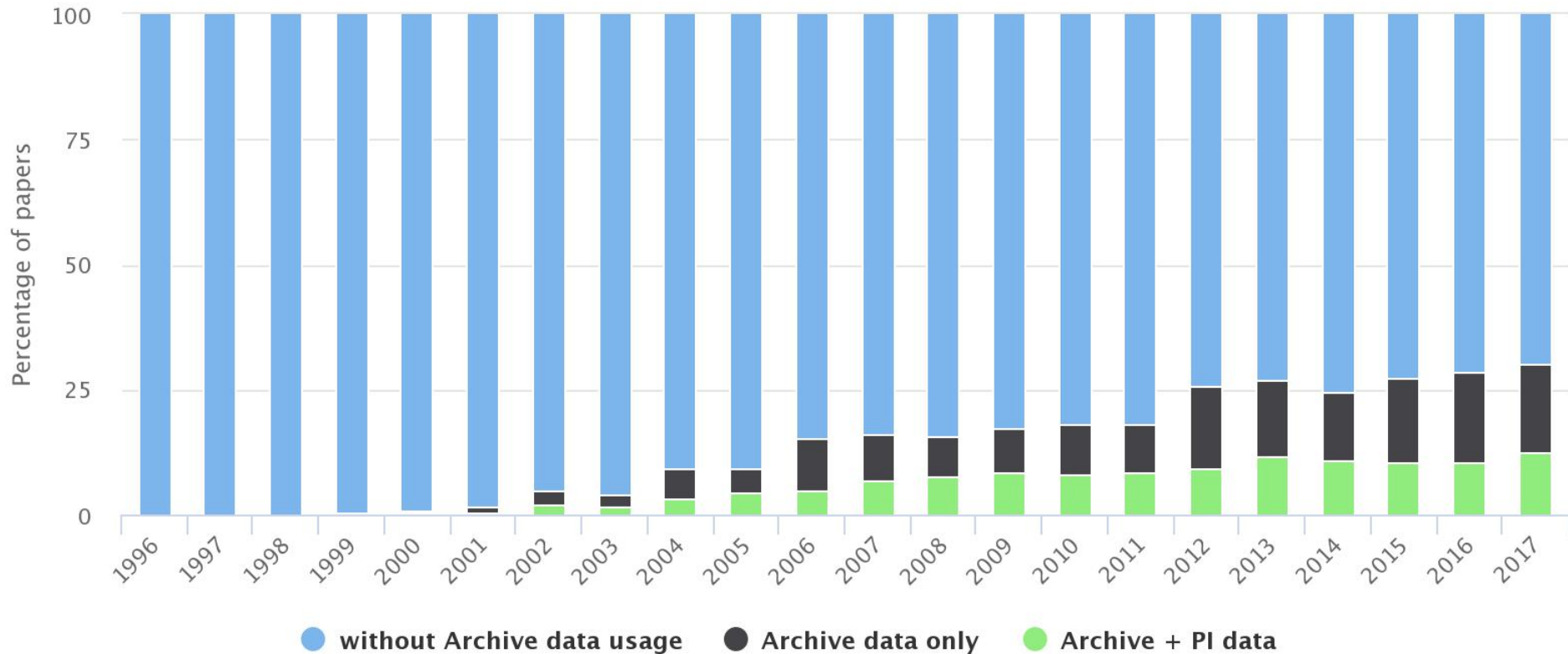
<http://www.eso.org/sci/libraries/edocs/ESO/ESOstats.pdf>



Science Archive as a Resource

Archive Data Usage

Source: telbib, 1996 - 2017



Highcharts.com





Science Archive Interface

Science Archive

Target: J2000+ 2614344 RESULTS

Collaps all

Data Type

- SPECTRUM 2605944
- CATALOG 77000
- IMAGE 26100
- CUBE 1078
- VISIBILITY 100

Spectral Range

Filter/Band

Spectral Resolution

Signal-to-Noise Ratio

Sensitivity

Date of Observation

| Actions | Data Type | Spec.Range | Spec.Res. | SNR | Obs.Date | Collection | Instrum. | T.Exp.T. | #Obs | PI | Program Id | Object | Pub.Date |
|--------------------------|-----------|------------|---------------|--------|----------|------------|----------|----------|------|--------|-------------------------------|----------------|------------|
| <input type="checkbox"/> | | SPECTRUM | 378.2-491.3nm | 115000 | 155.5 | 2008-02-22 | HARPS | HARPS | 500 | single | OBSERVATORY.LA SILLA 60A 9700 | HD121504 | 2008-02-23 |
| <input type="checkbox"/> | | SPECTRUM | 378.2-491.3nm | 115000 | 158.7 | 2008-02-22 | HARPS | HARPS | 500 | single | OBSERVATORY.LA SILLA 60A 9700 | HD121504 | 2008-02-23 |
| <input type="checkbox"/> | | SPECTRUM | 378.2-491.3nm | 115000 | 157.3 | 2008-02-22 | HARPS | HARPS | 500 | single | OBSERVATORY.LA SILLA 60A 9700 | HD121504 | 2008-02-23 |
| <input type="checkbox"/> | | SPECTRUM | 378.2-491.3nm | 115000 | 192.7 | 2008-02-22 | HARPS | HARPS | 500 | single | OBSERVATORY.LA SILLA 60A 9700 | HD-117458 | 2008-02-23 |
| <input type="checkbox"/> | | SPECTRUM | 378.2-491.3nm | 115000 | 174.5 | 2008-02-22 | HARPS | HARPS | 500 | single | OBSERVATORY.LA SILLA 60A 9700 | HD-117458 | 2008-02-23 |
| <input type="checkbox"/> | | SPECTRUM | 378.2-491.3nm | 115000 | 182 | 2008-02-22 | HARPS | HARPS | 500 | single | OBSERVATORY.LA SILLA 60A 9700 | HD-117458 | 2008-02-23 |
| <input type="checkbox"/> | | SPECTRUM | 378.2-491.3nm | 115000 | 181 | 2008-02-22 | HARPS | HARPS | 500 | single | OBSERVATORY.LA SILLA 60A 9700 | HD108347 | 2008-02-23 |
| <input type="checkbox"/> | | SPECTRUM | 378.2-491.3nm | 115000 | 189.3 | 2008-02-22 | HARPS | HARPS | 500 | single | OBSERVATORY.LA SILLA 60A 9700 | HD108347 | 2008-02-23 |
| <input type="checkbox"/> | | SPECTRUM | 378.2-491.3nm | 115000 | 183.6 | 2008-02-22 | HARPS | HARPS | 500 | single | OBSERVATORY.LA SILLA 60A 9700 | HD108347 | 2008-02-23 |
| <input type="checkbox"/> | | SPECTRUM | 378.2-491.3nm | 115000 | 104 | 2008-02-22 | HARPS | HARPS | 90 | single | OBSERVATORY.LA SILLA 60A 9700 | HD107983_15Com | 2008-02-23 |

Stay tuned, release imminent!