

GRA4MAT and the next steps for AGN research with the VLT



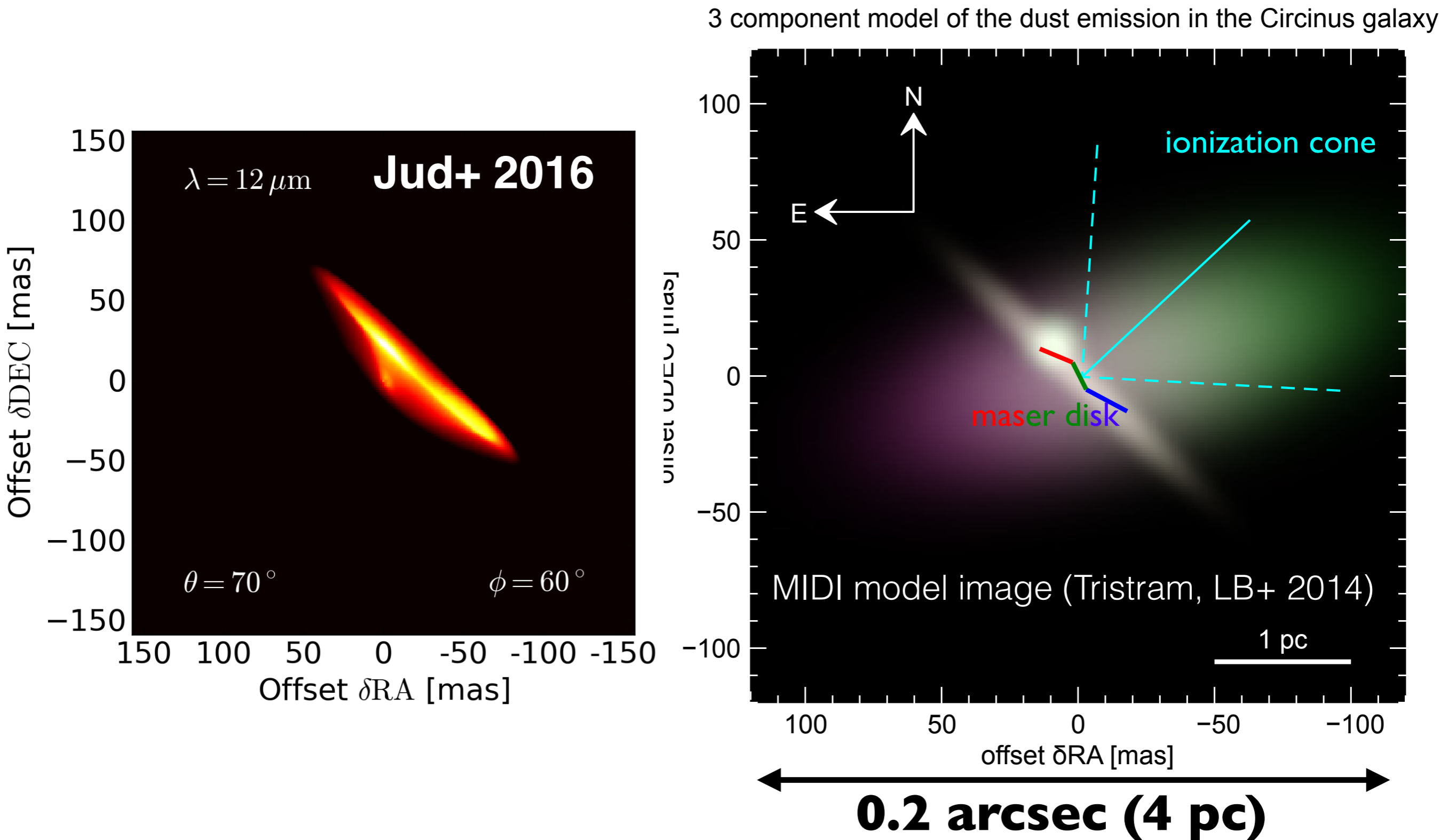
Universiteit
Leiden

Leonard Burtscher

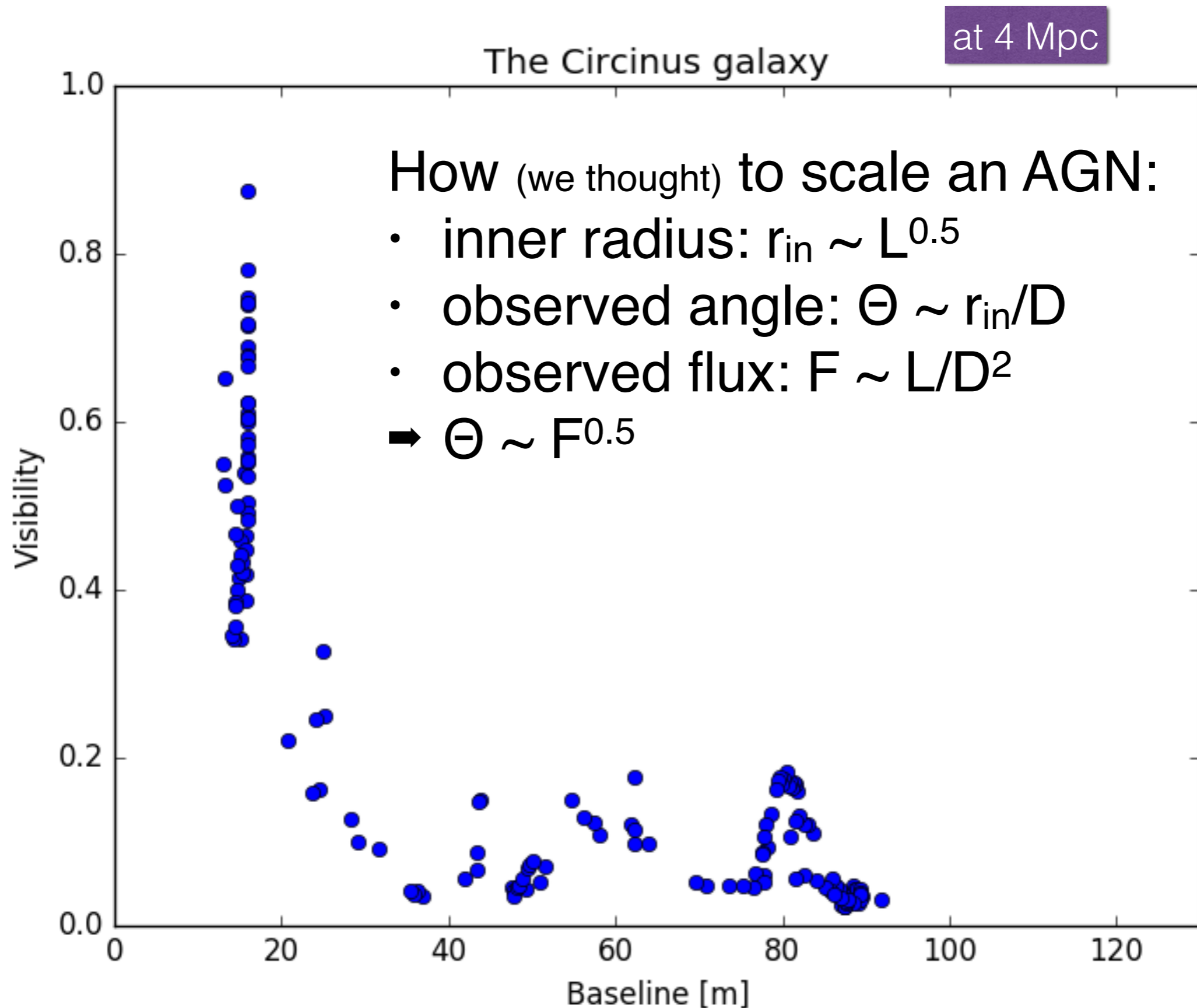
 @LeoBurtscher

The Circinus galaxy on sub-parsec scale

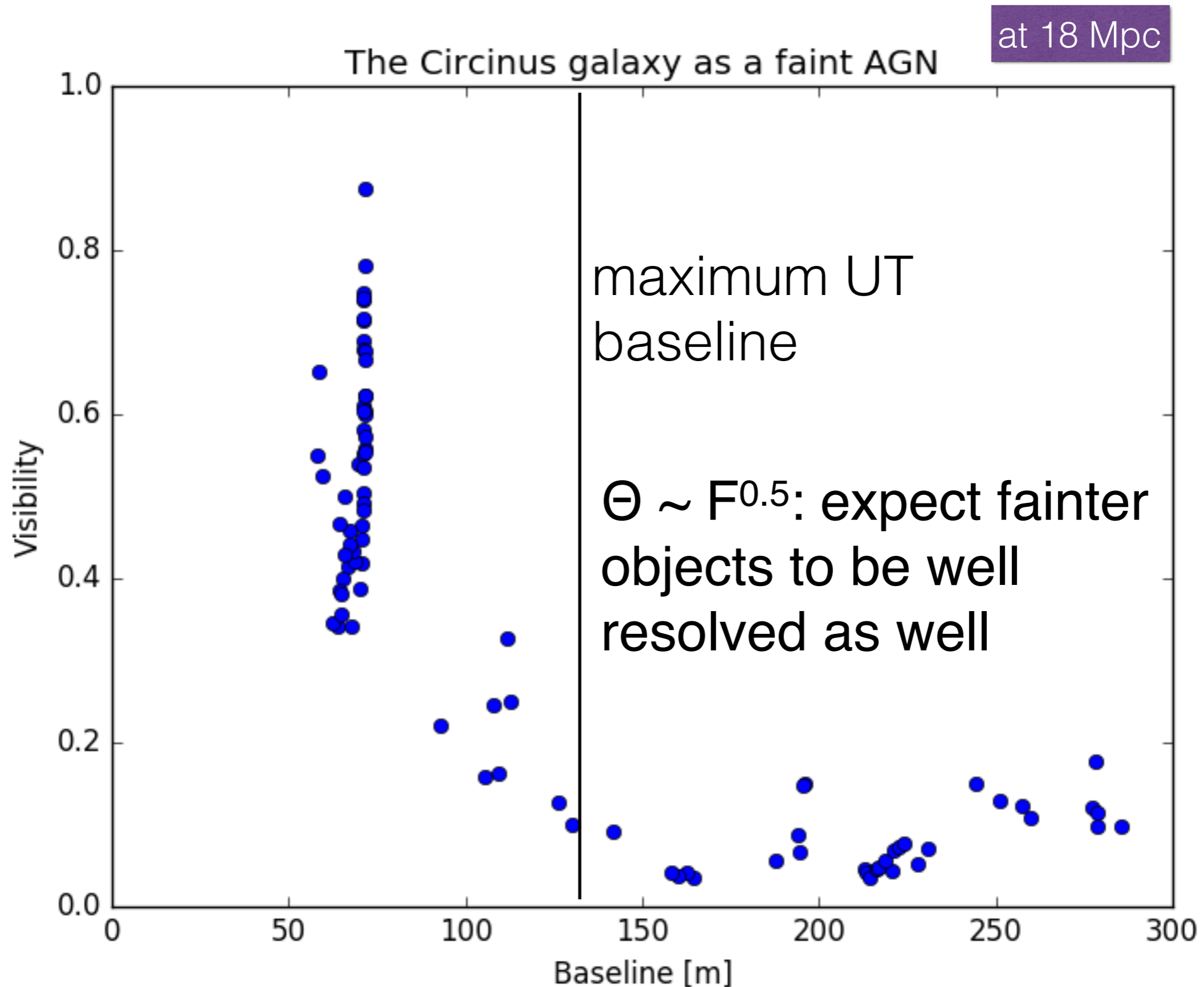
Where is the torus?



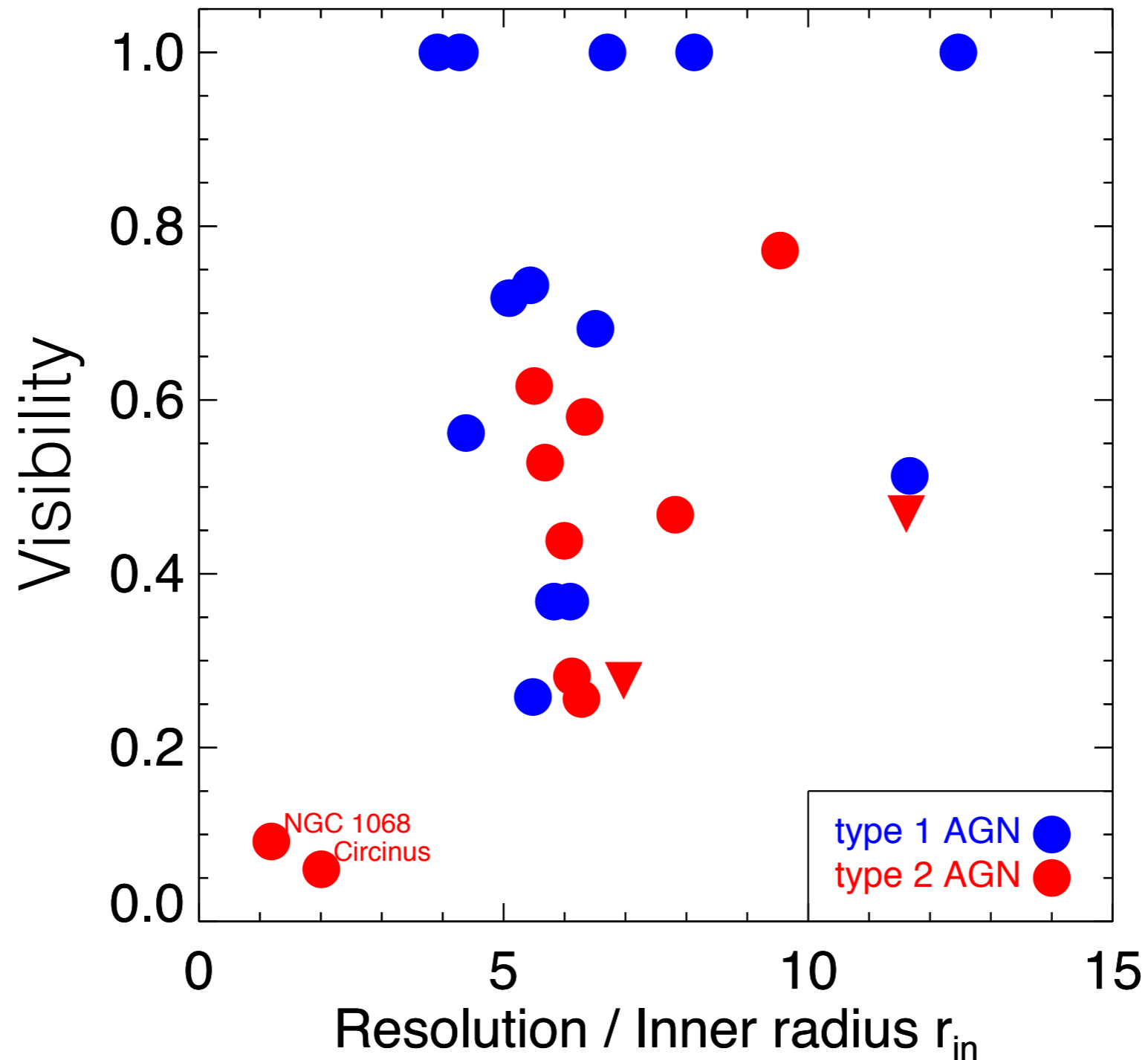
Fainter sources: What to expect



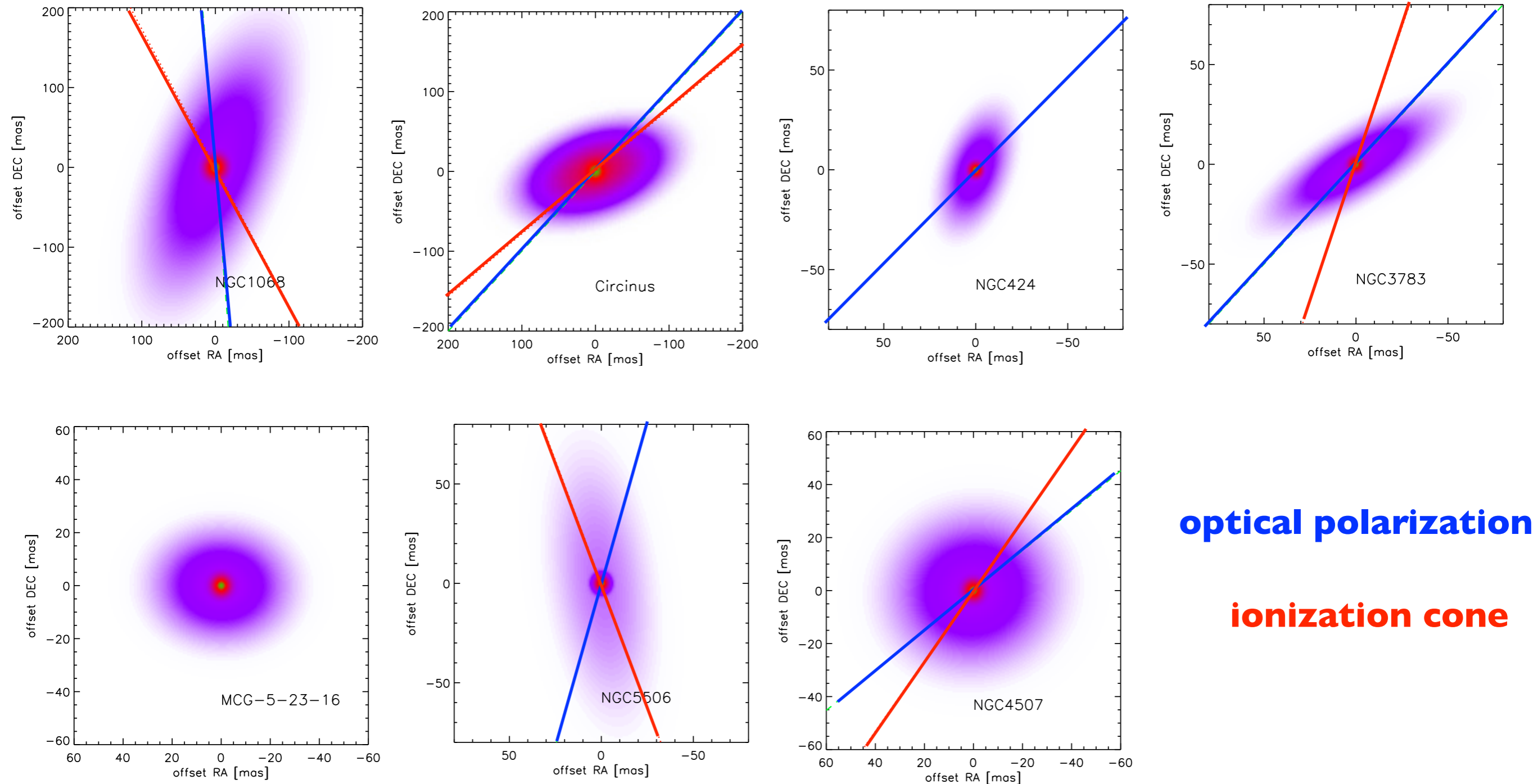
Fainter sources: What to expect



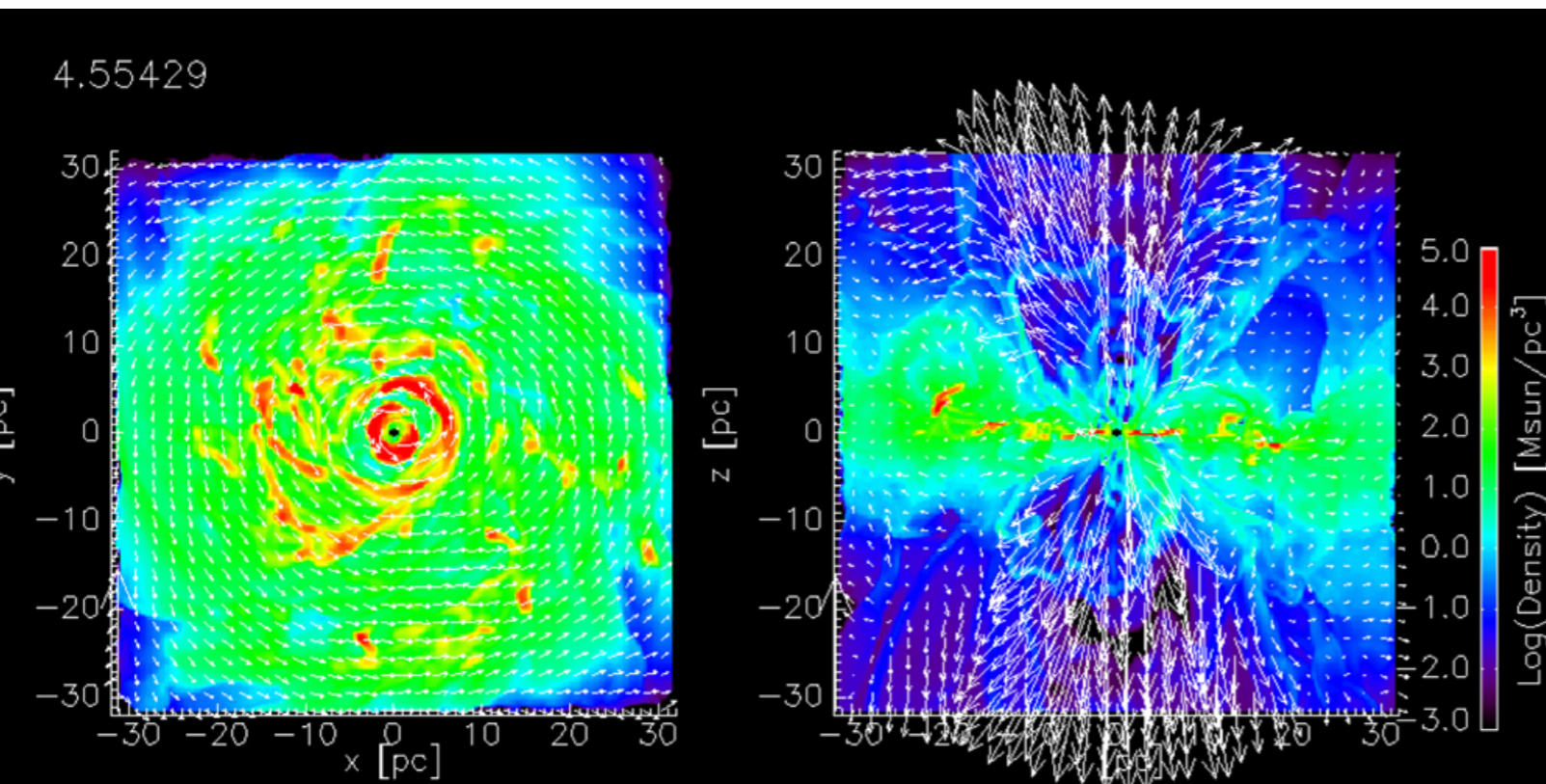
Faint sources are much smaller than expected



Most AGN „tori“ are oriented along the polar axis

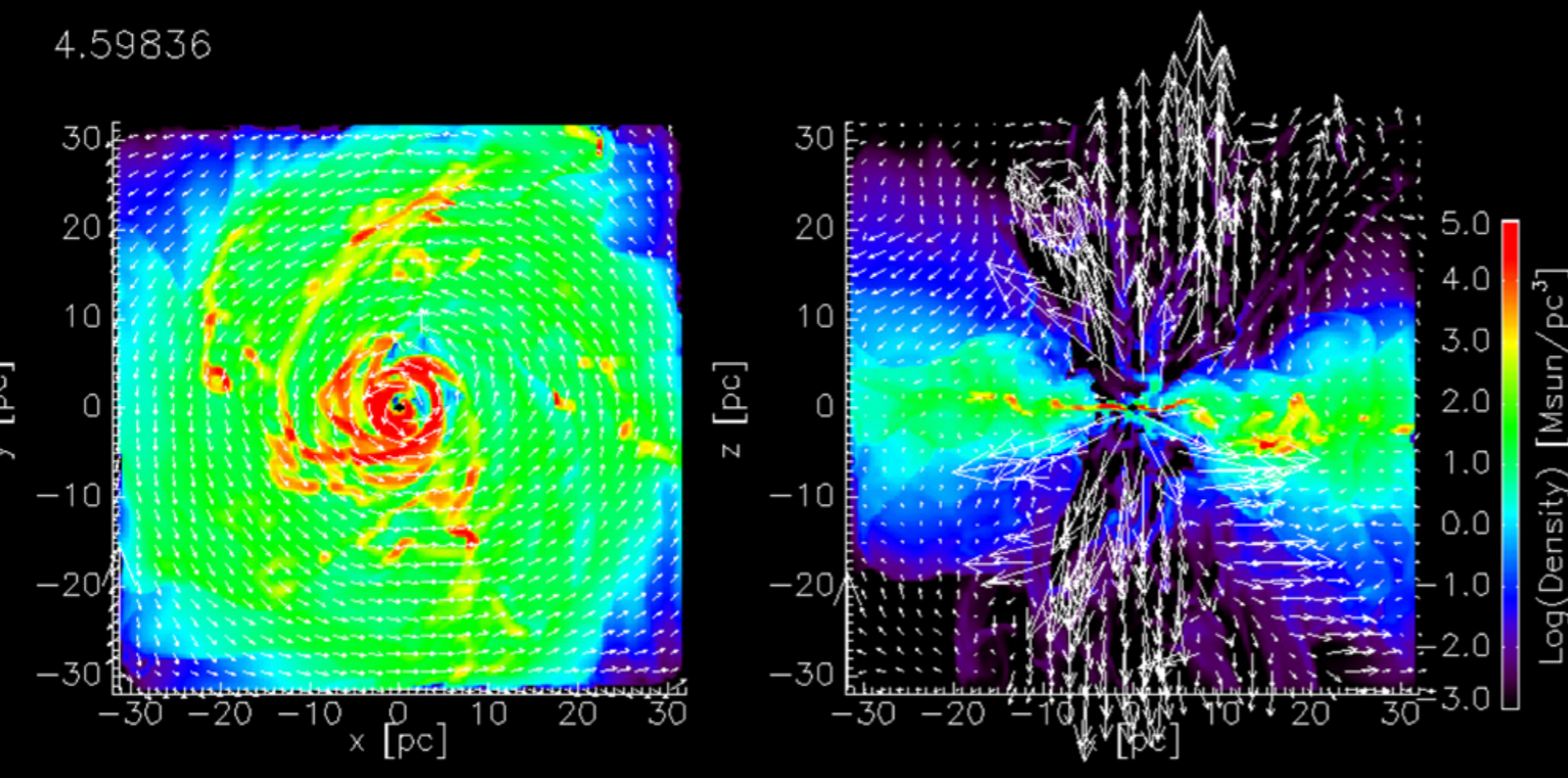


Probing AGN outflows at the base



Wada+ 2012

10% Eddington rate

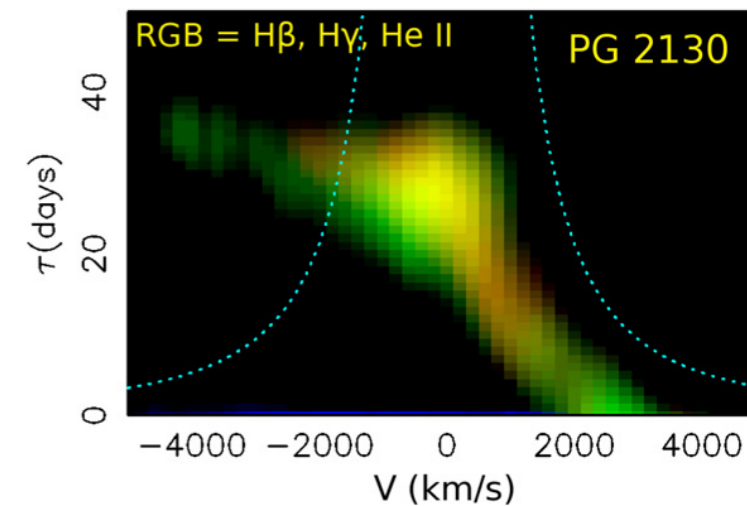
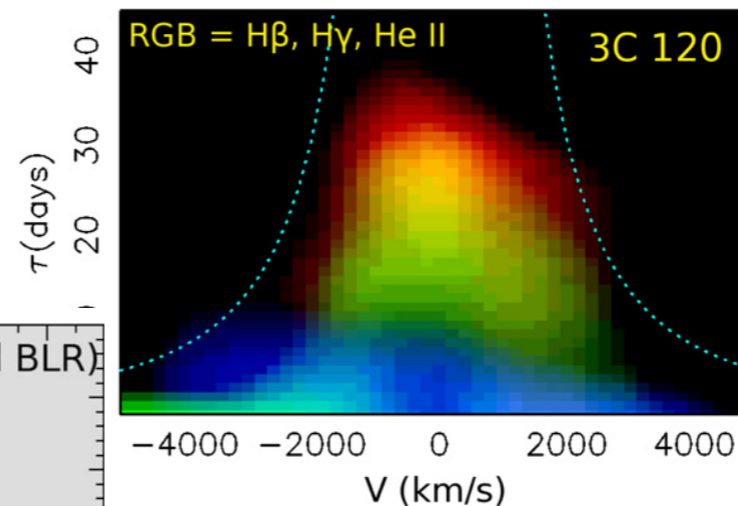
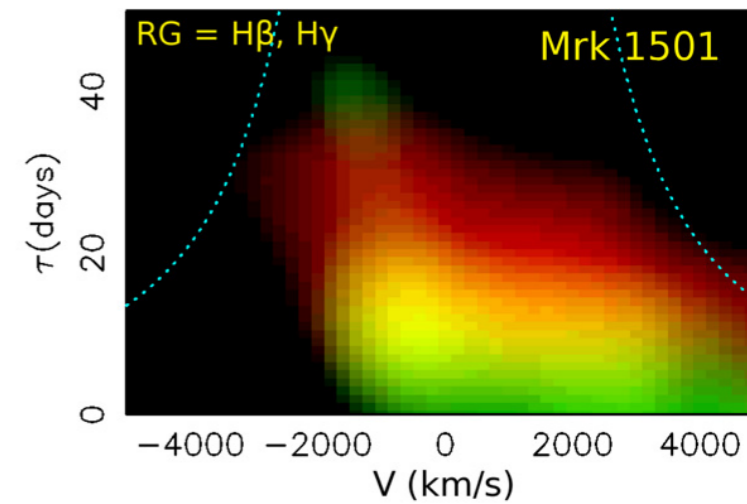
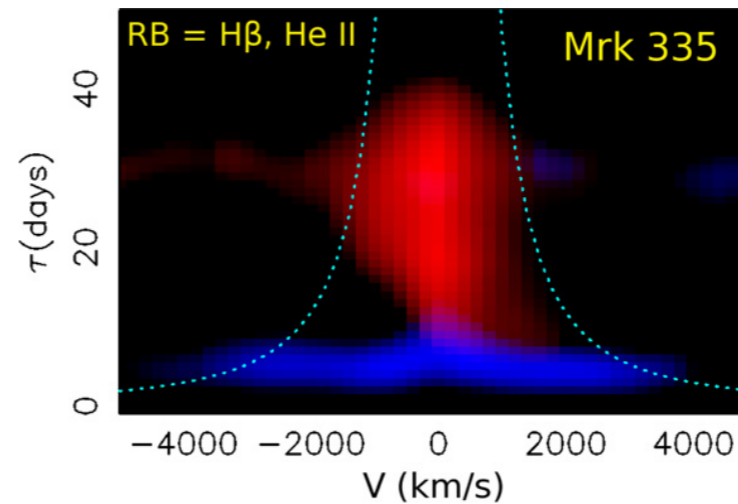


1% Eddington rate

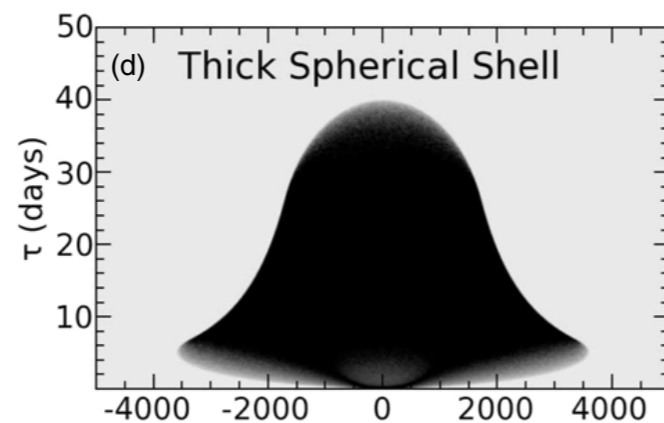
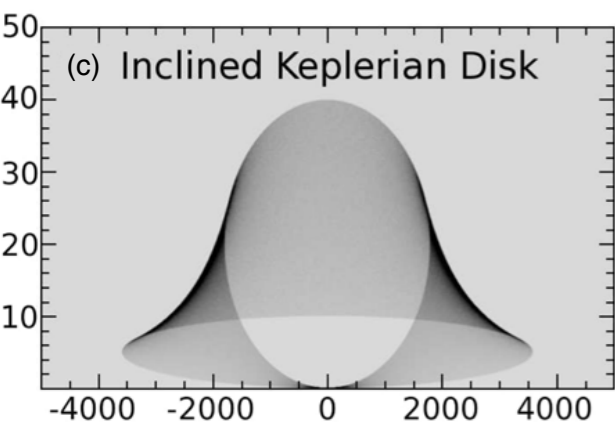
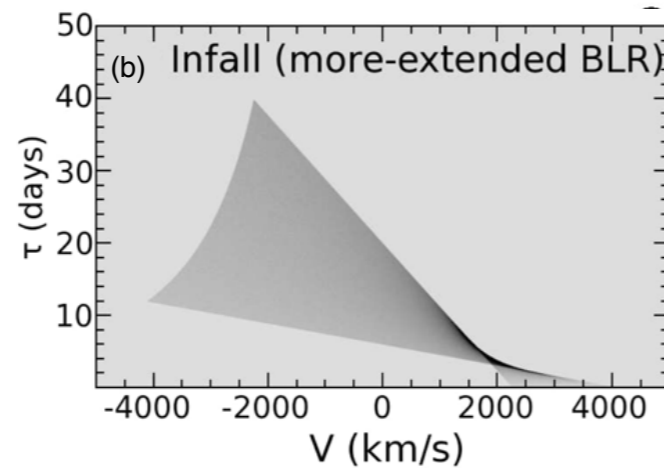
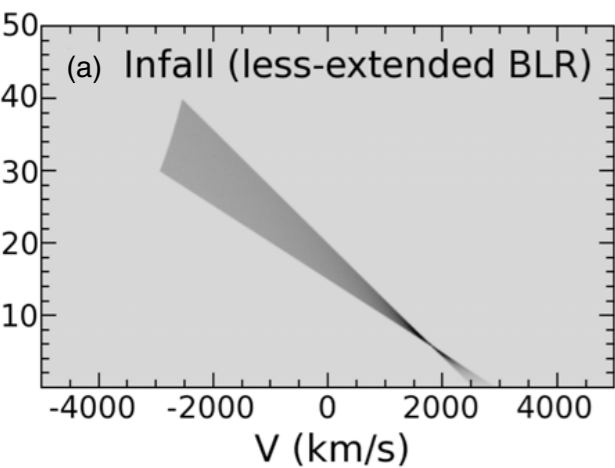
Broad line region studies: $B\gamma$ / $Br\alpha$

„velocity-resolved delay maps“
show how the broad line region
reacts to continuum variations

recent observations indicate a
variety of geometries from
infall to disks



Grier+ 2013



$$v_{\text{BLR}} = f \cdot \text{FWHM}$$

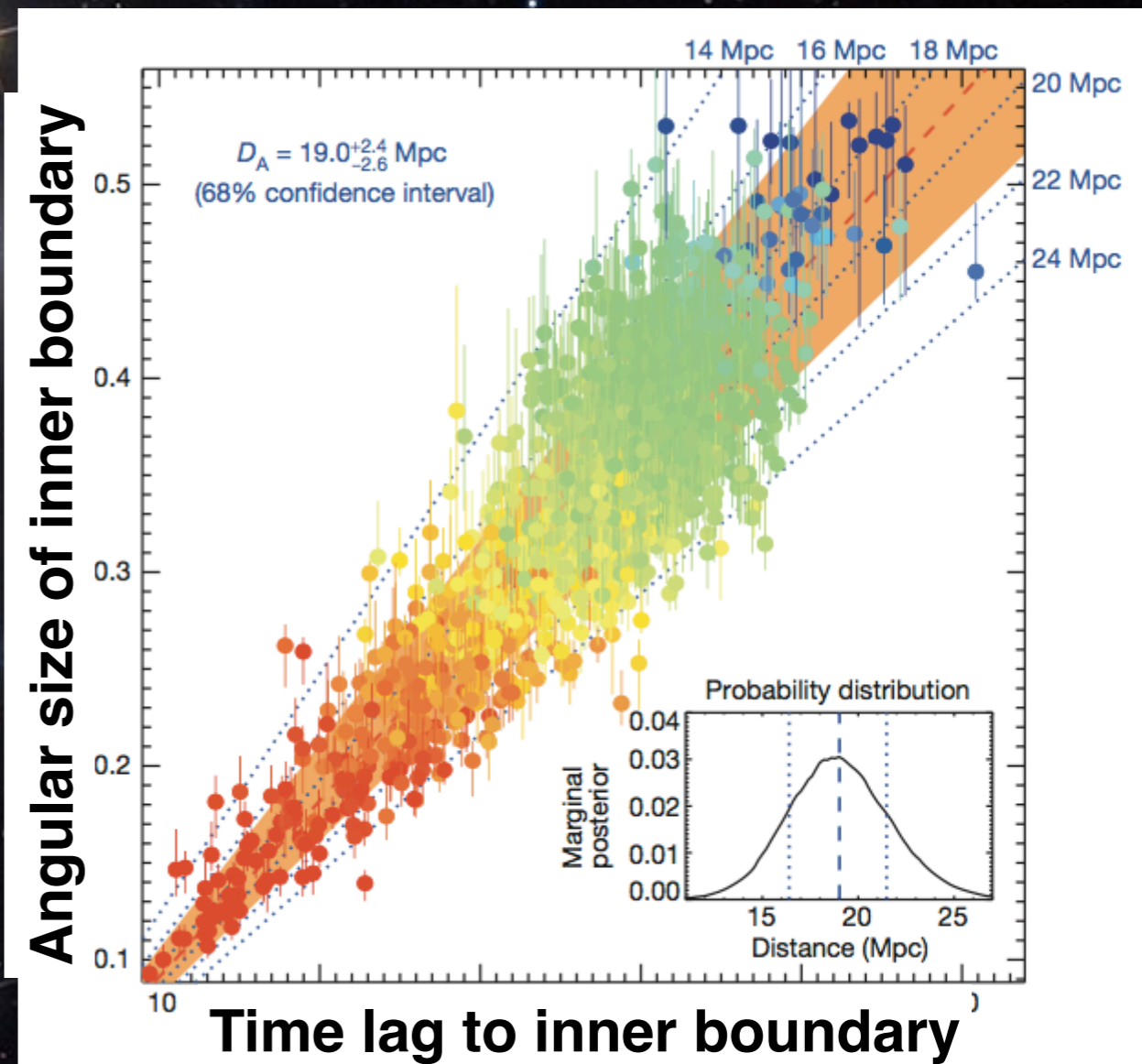
$$M_{\text{BH}} \sim \frac{R_{\text{BLR}} \cdot v_{\text{BLR}}^2}{G}$$

$$f \sim 0.7 - 5$$

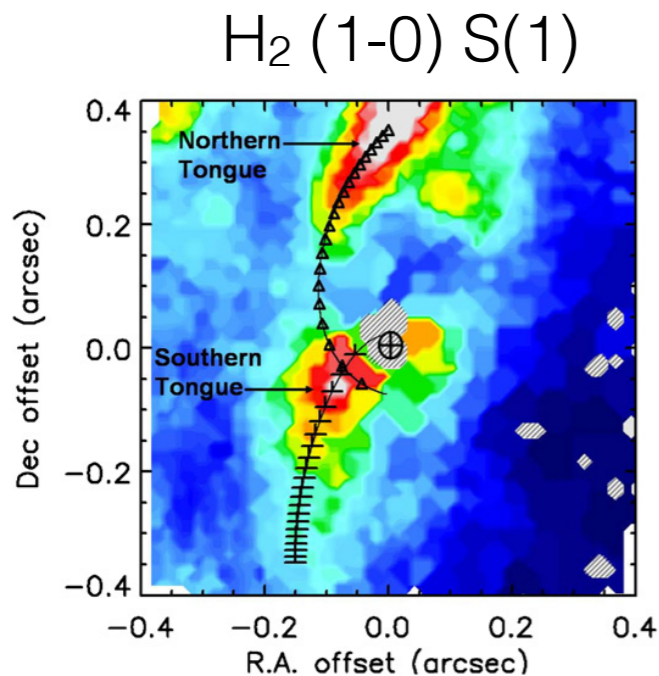
Distance measurements

Hönig+ 2014

NGC 4151	Distance Modulus (mag)	Metric Distance (Mpc)
Mean	30.29	14.066
Std. Dev.	1.55	8.694
Min.	27.95	3.890
Max.	32.33	29.200
Median	31.04	16.200



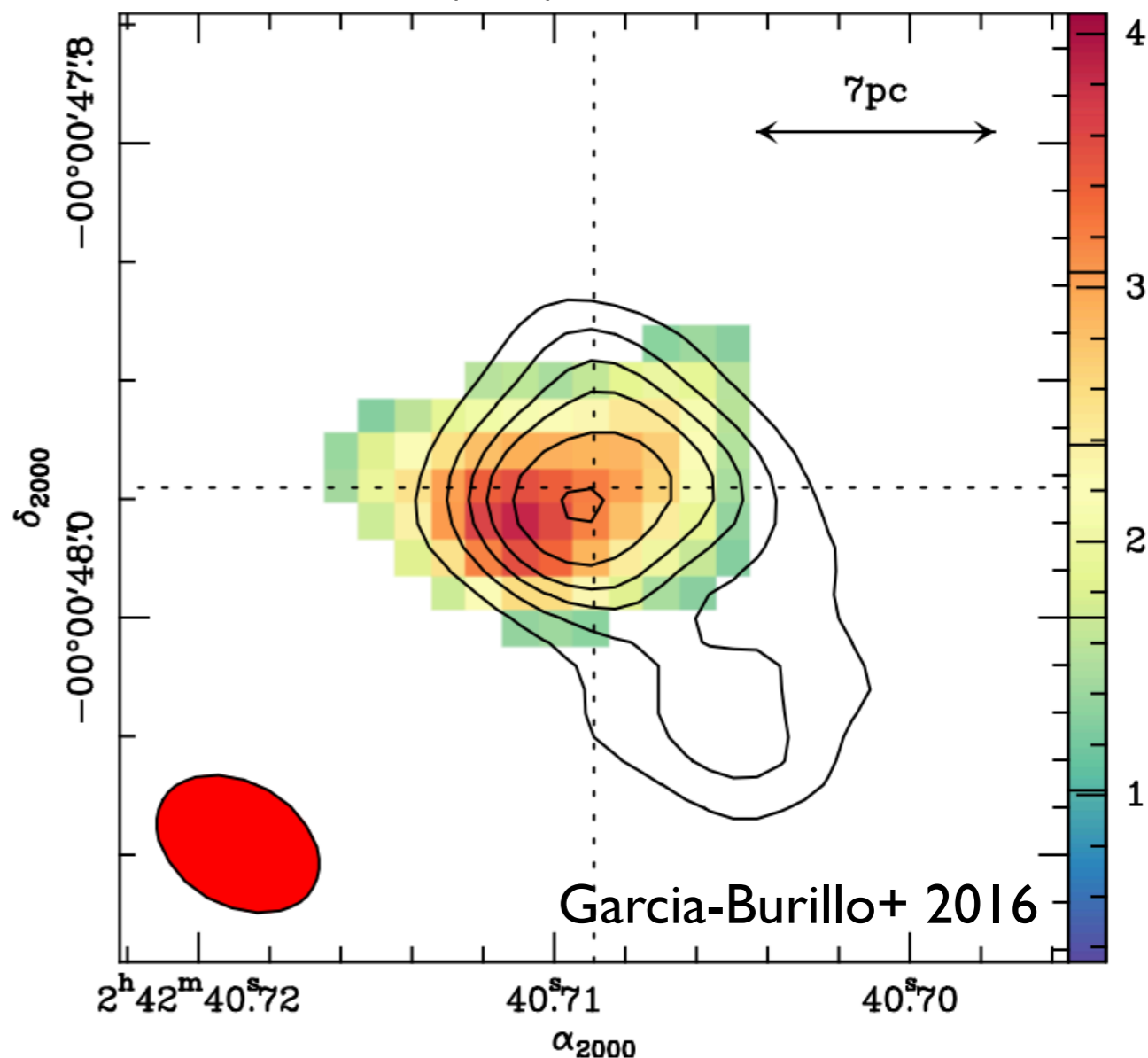
„Nodules“ NGC 1068



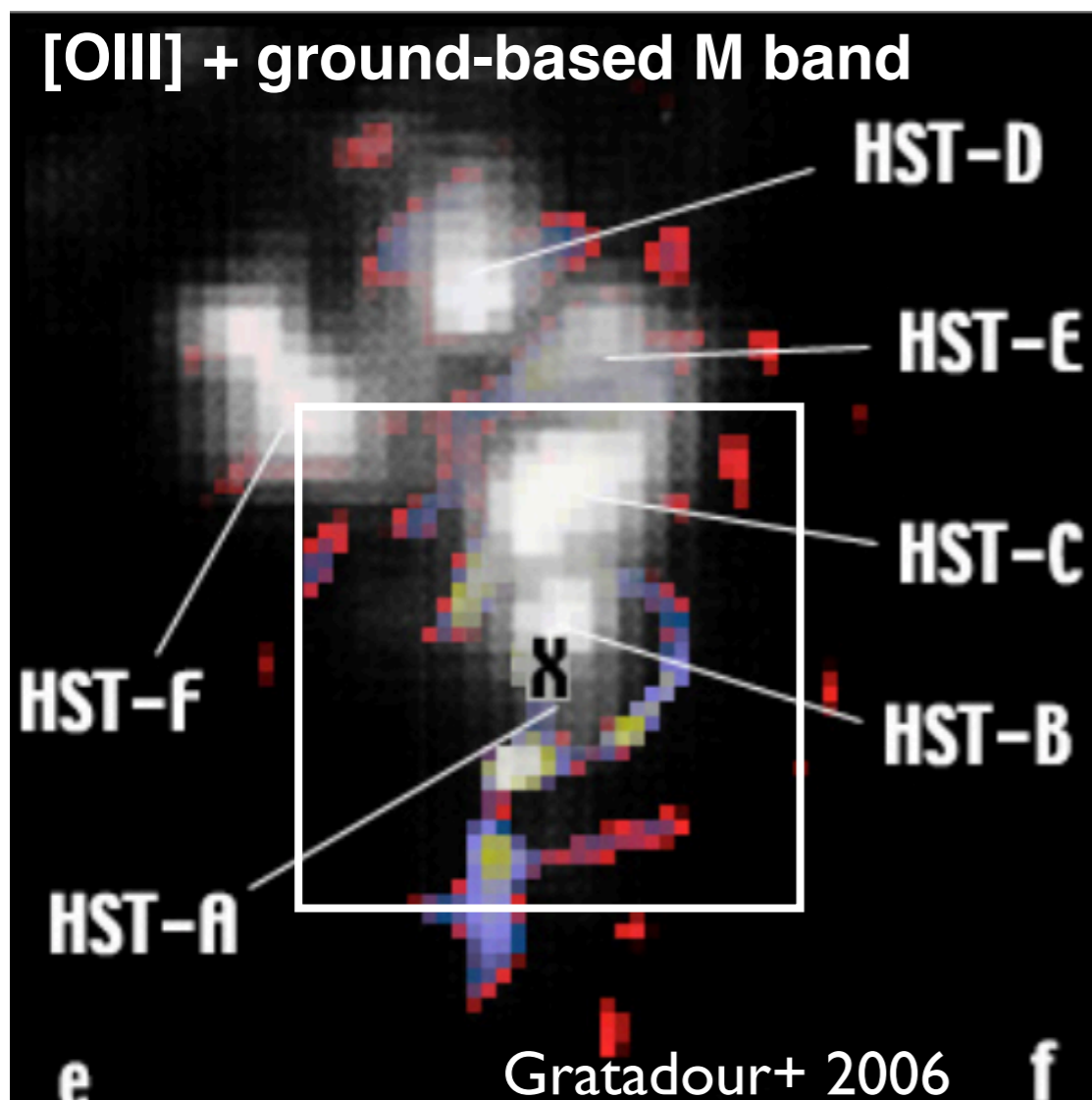
Müller-Sánchez+ 2009

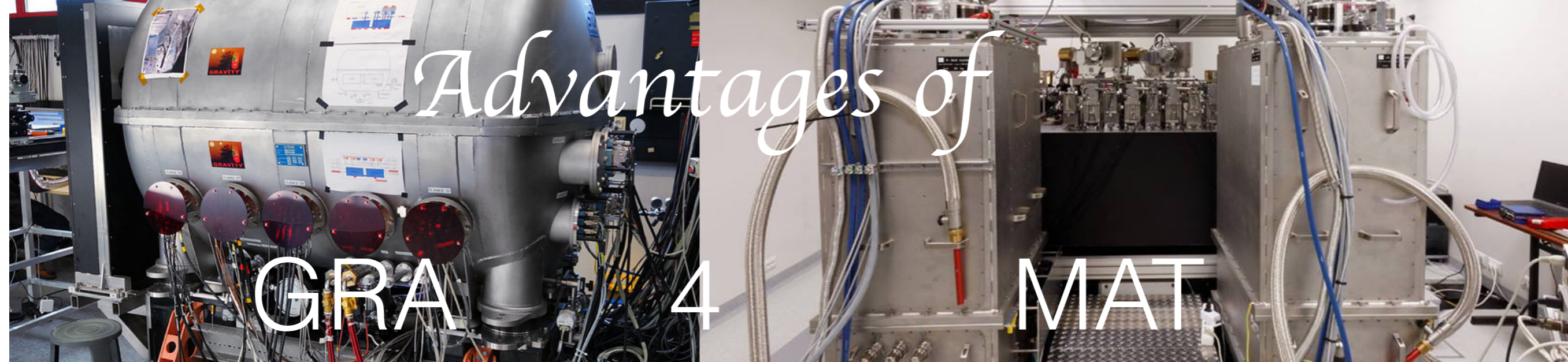
Molecular and stellar lines very close to the AGN?

ALMA CO(6-5) and continuum

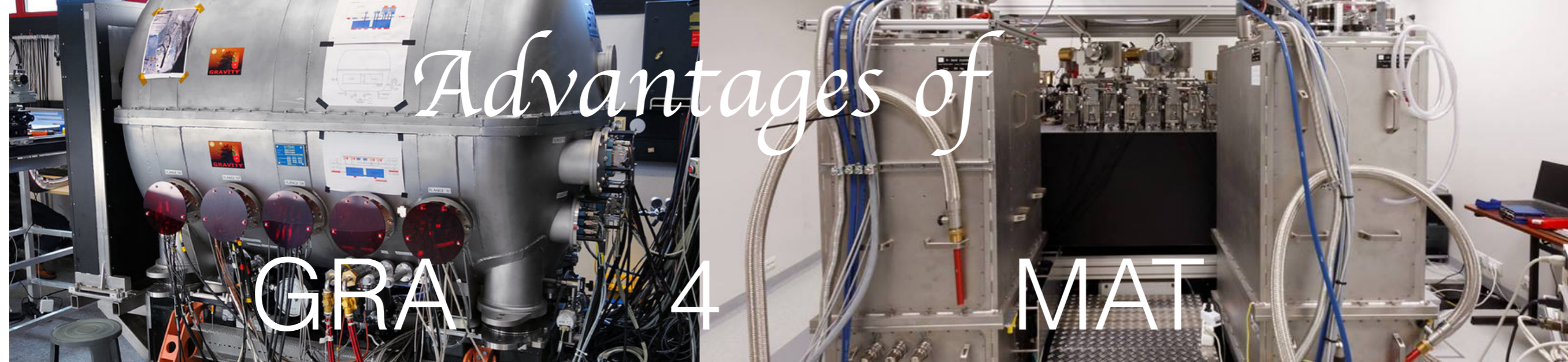


[OIII] + ground-based M band





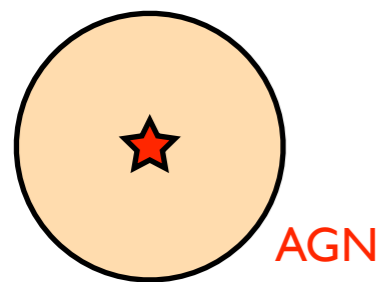
- **Longer coherence / integration times in MATISSE**
 - higher sensitivity
 - more efficient since H2RG is currently read-out noise limited
 - allows to observe larger bandwidth high-res spectra



- **Transfer some UT observations to ATs**
 - better (u,v) coverage
 - pays for GRA4MAT if just 1.5 nights of UT observations can be shifted to ATs (assuming 5-6 FTE for GRA4MAT as estimated by ESO)

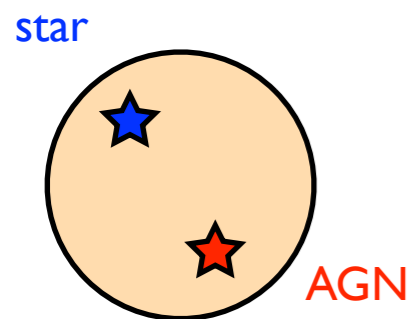
How many sources?

on-axis



2"
VLT field of view

off-axis

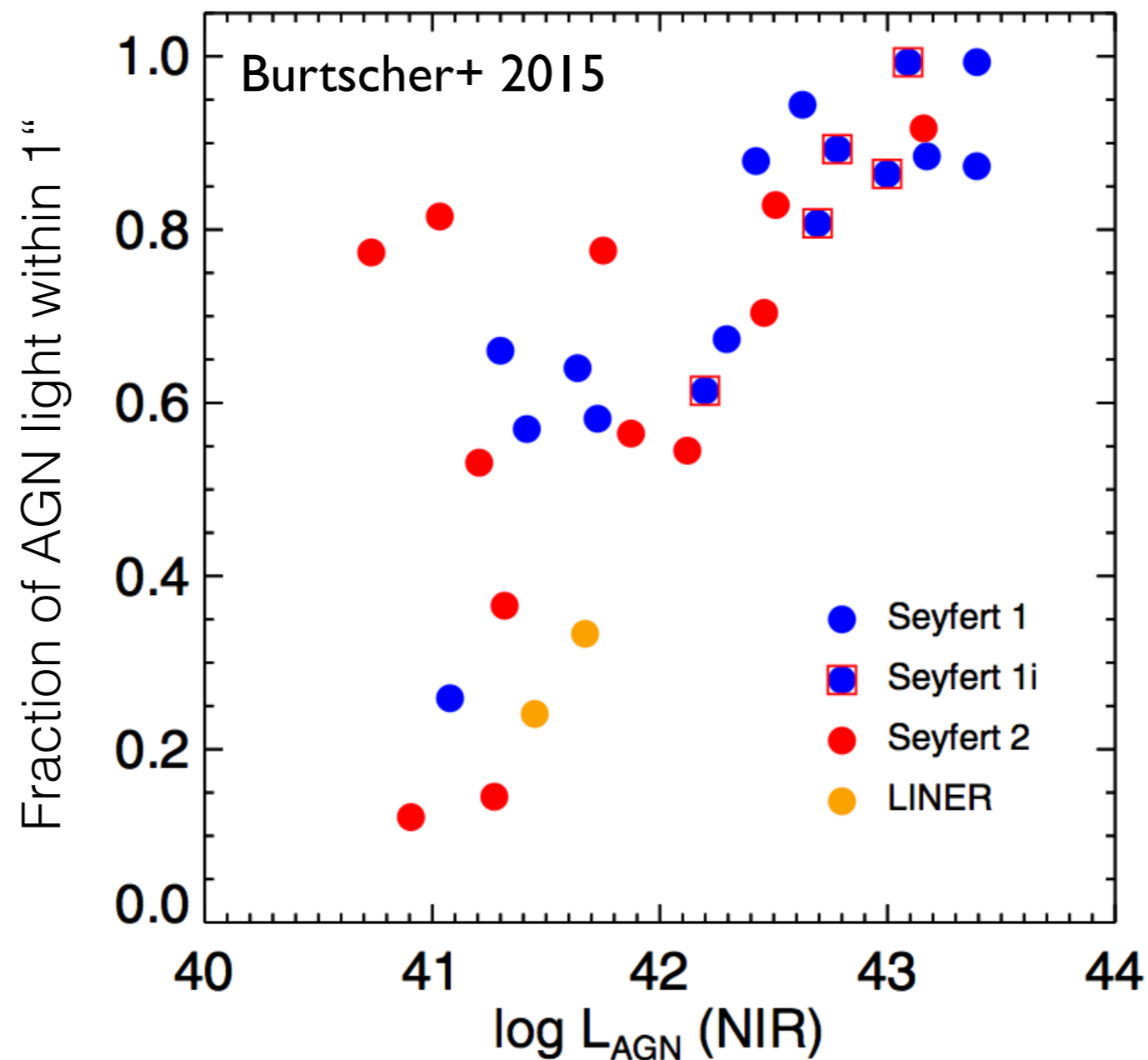


2"
VLT field of view

Veron-Cetty & Veron 2010
167566 AGNs + QSOs

X

2MASS PSC
K < 10.5, dist < 2", DEC < +30, Sy I



- use DDLs for GRA4MAT off-axis use
- dedicated 2GFT to reach $K \sim 12.5$ mag

