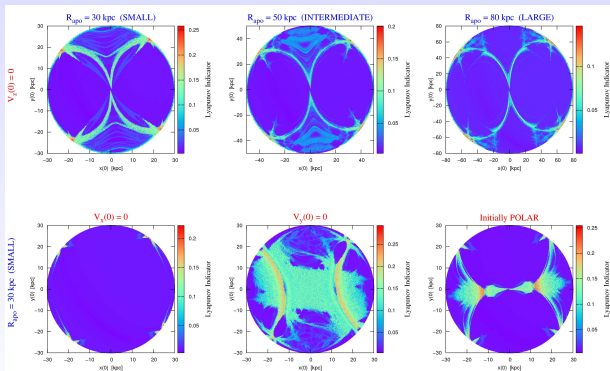


The effects of the triaxiality of dark matter halos on stellar streams

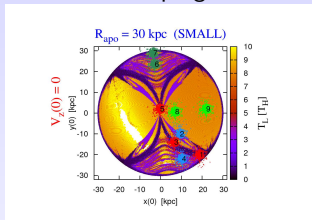
DM Halo of the Galaxy modelled with a generalized NFW potential (triaxial and with varying axial ratios)



The proportion of chaotic areas is sensitive to the orientation of the initial velocity

The effects of the triaxiality of dark matter halos on stellar streams

Selection of initial conditions for stream progenitors



On each one of the ICs we have centred a Plummer sphere of 10^4 stars (representing a dwarf galaxy). Plummer spheres have

$$M_{\text{total}} = 2.25 \times 10^7 M_{\odot} \text{ and}$$

$$r_{1/2} = 0.375 \text{ kpc.}$$

Observational properties of the streams

