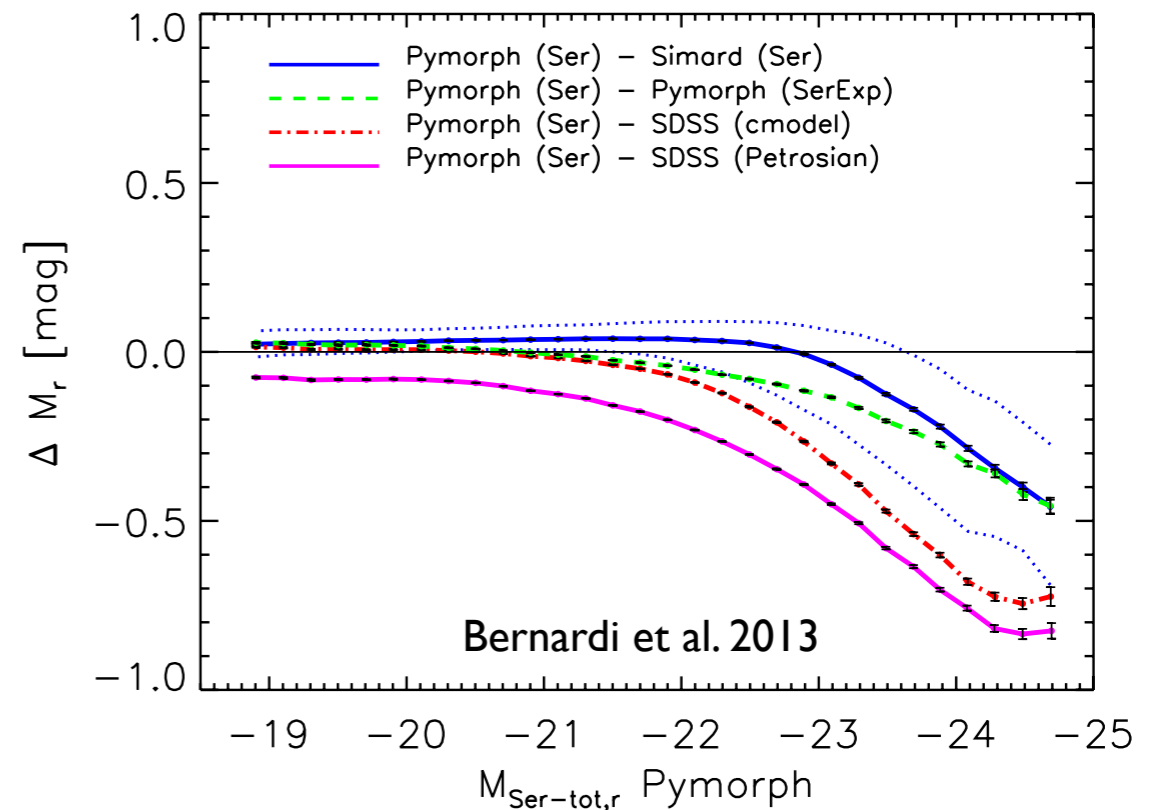
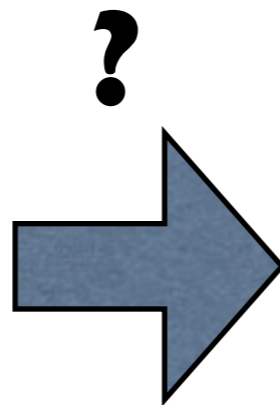
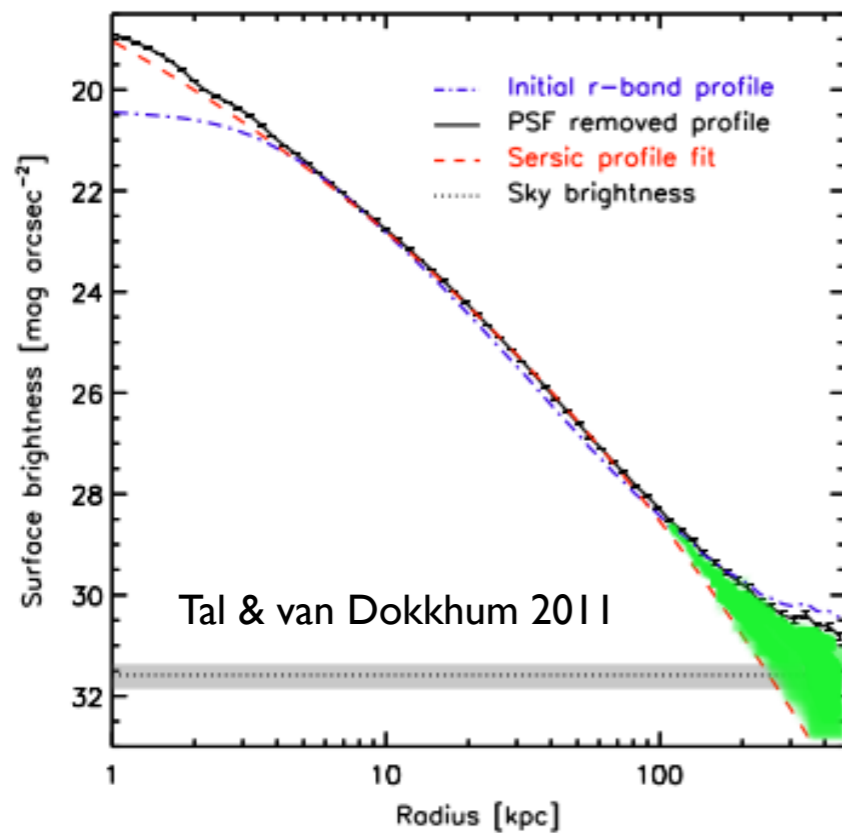
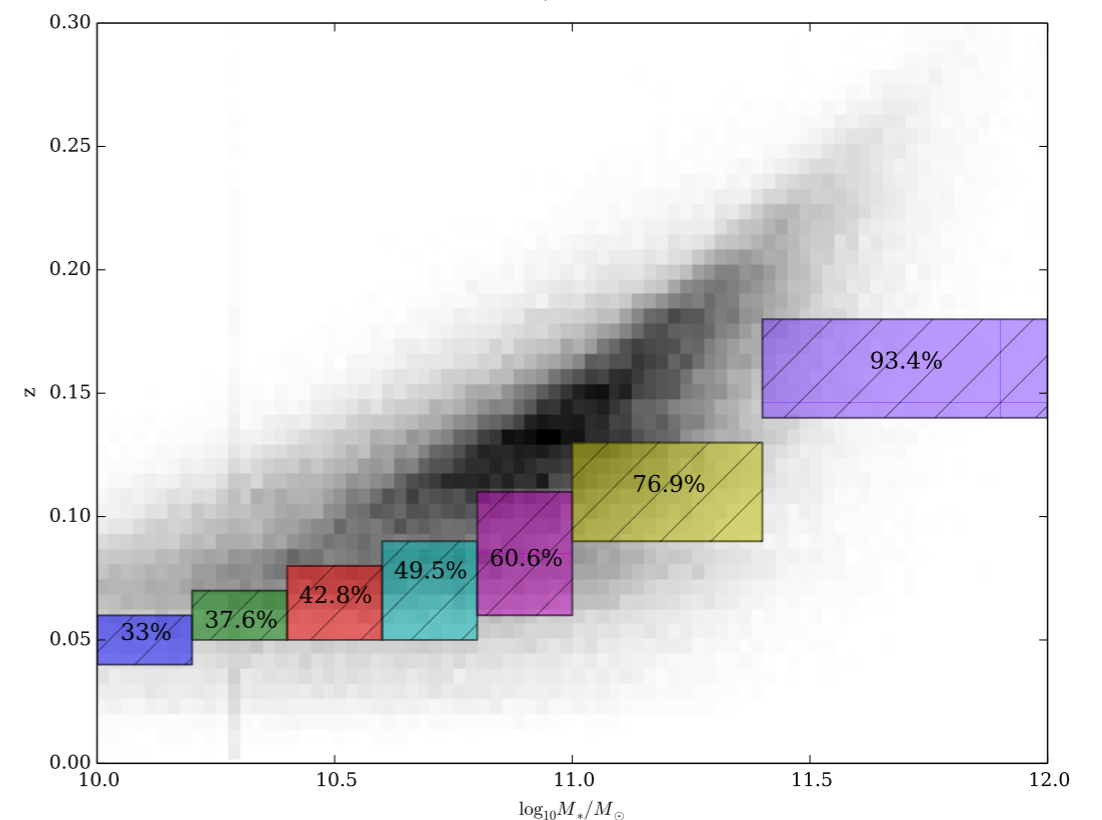


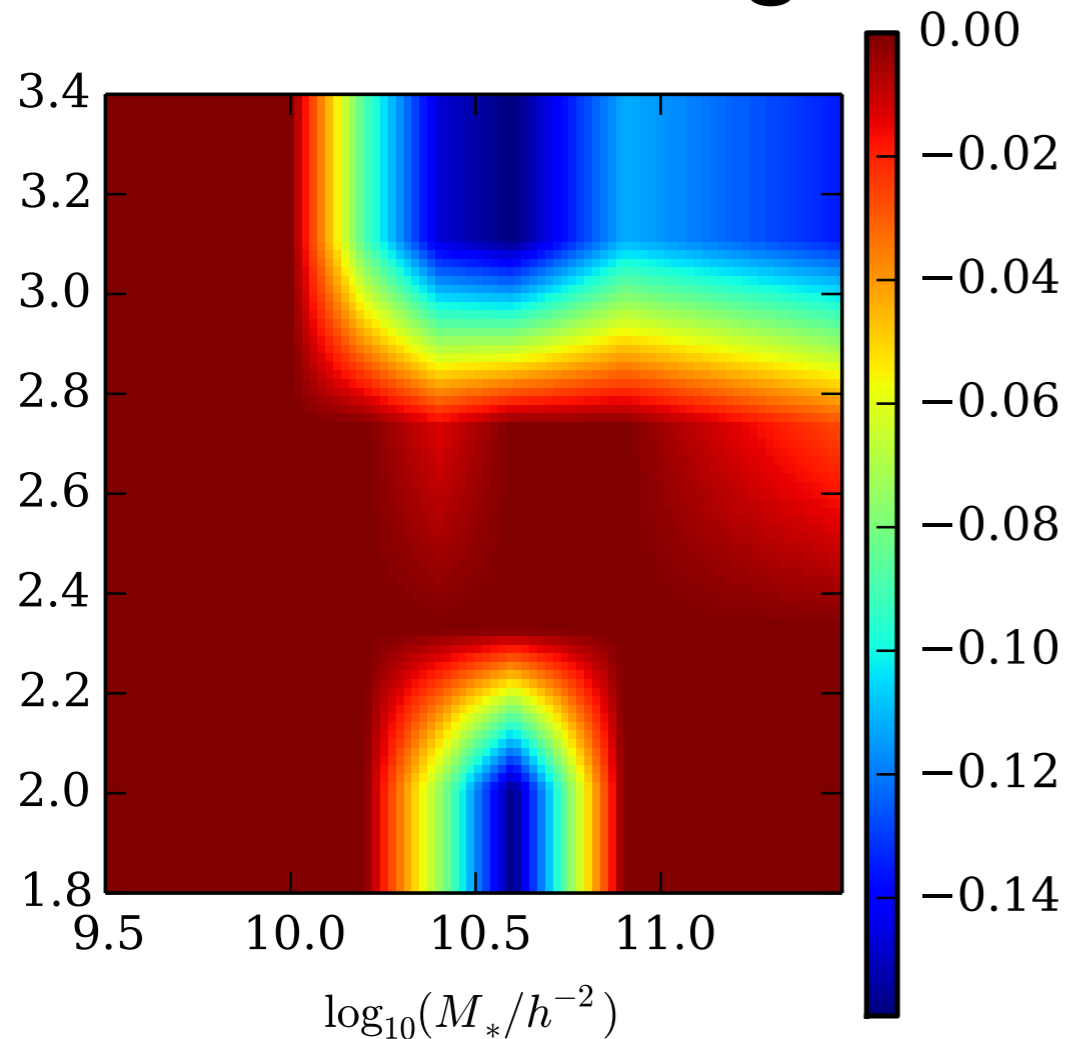
Implications of the Stellar Halo of Galaxies on the Massive End of the Stellar Mass Function at $z \sim 0.1$



- Can be answered by stacking SDSS data according to stellar mass and concentration



Magnitude increase on ModelMag



**Conclusion: No serious
consequences for the
Stellar Mass Function at $z \sim 0.1$**

