

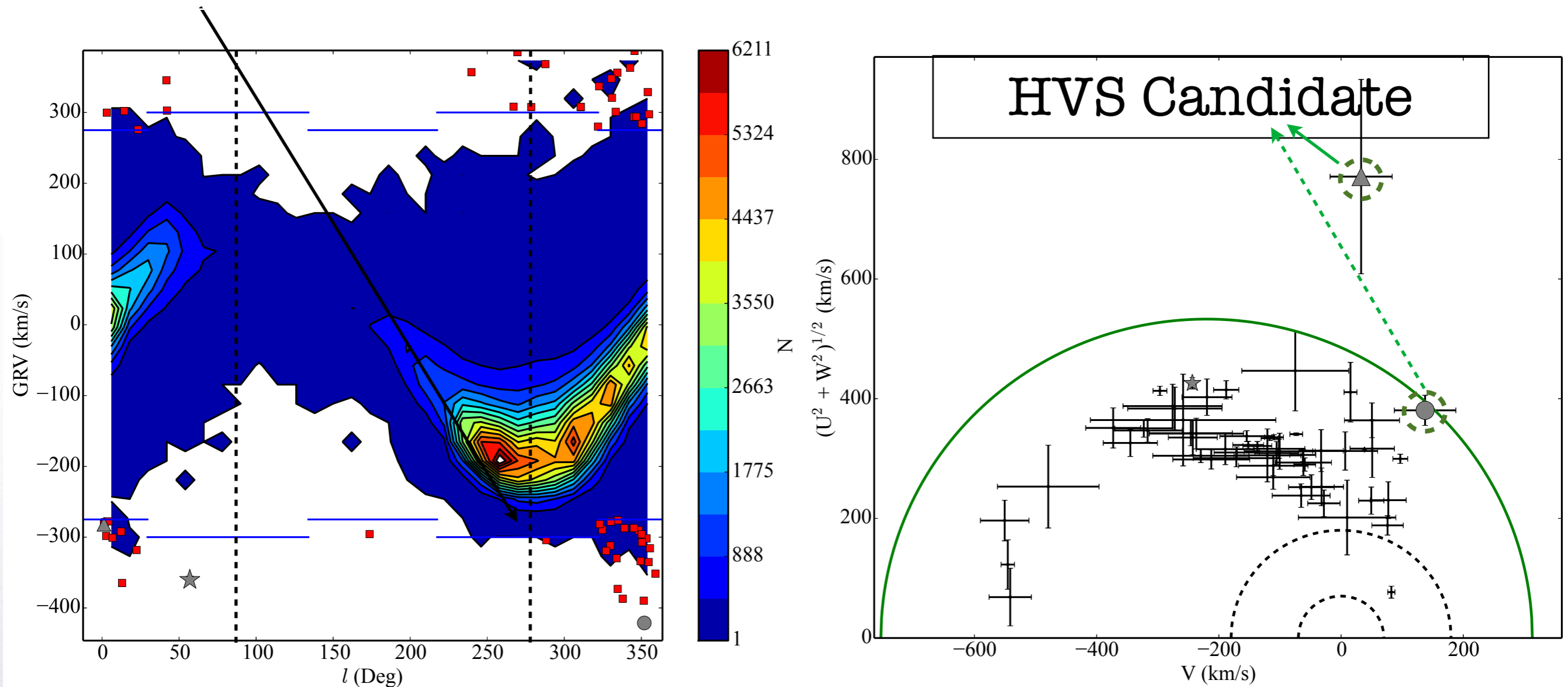


Characterizing High-Velocity Stars



in the RAVE Survey

The disk



Chemistry + Dynamic

Keith Hawkins (IoA)

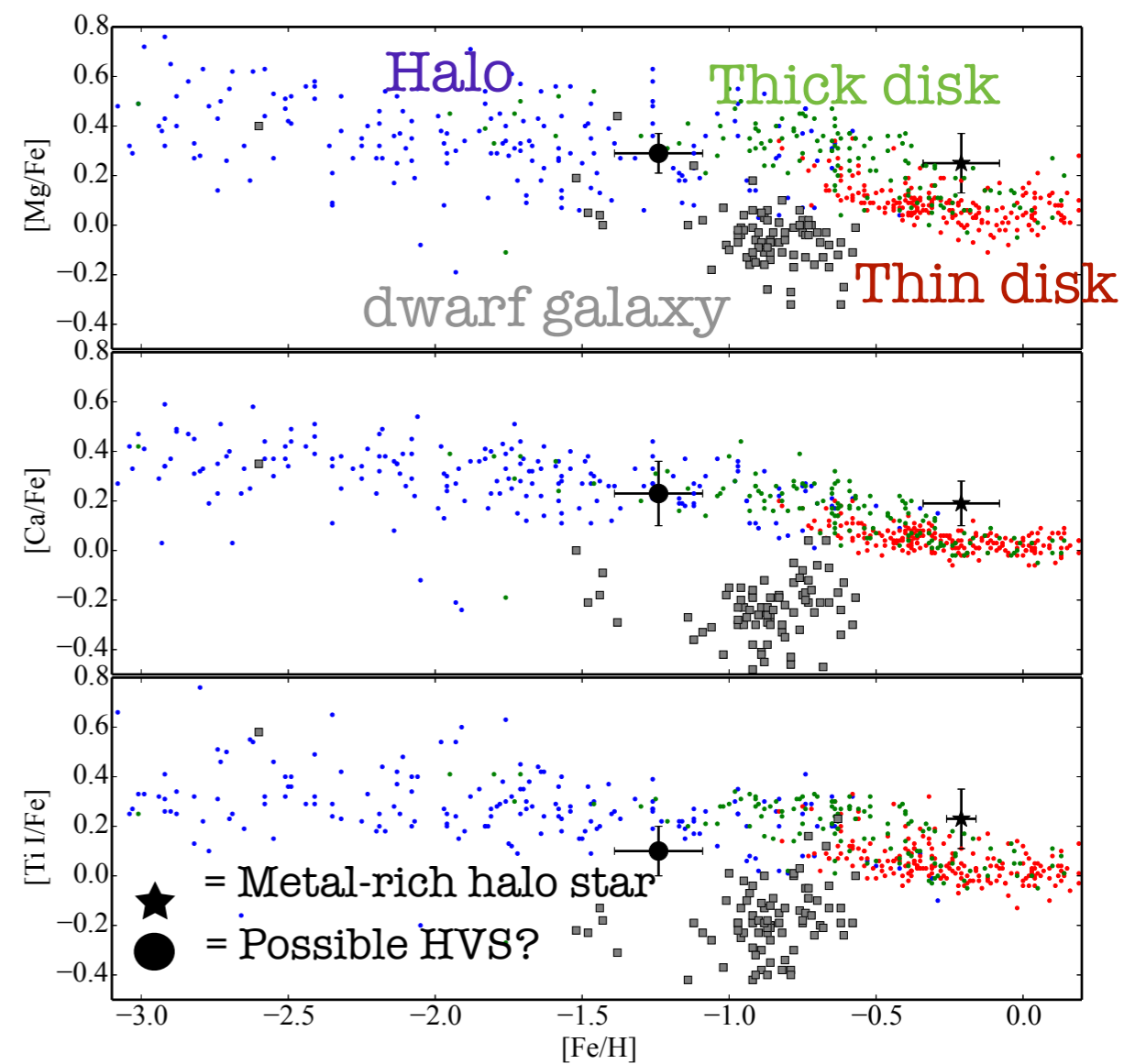
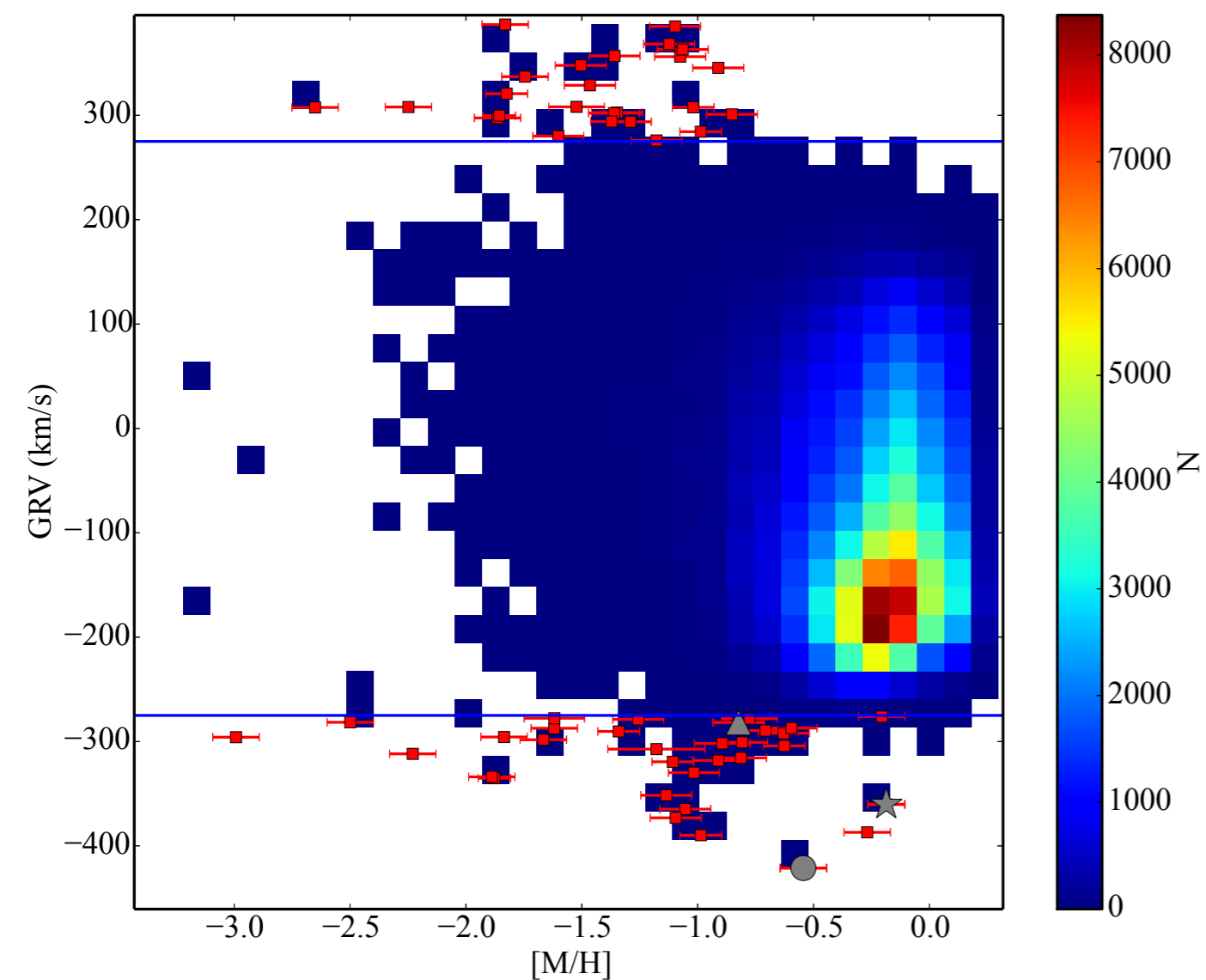
Based on: **Hawkins+2015, MNRAS 447 2046**



Characterizing High-Velocity Stars

← | →

in the RAVE Survey



Takeaway: Discovered (1) metal-rich halo star born in the Galactic Disk, (2) possible late-type HVS

Other Conclusions: HiVel stars are metal-poor, moderately enriched in alpha-elements consistent with halo