

LMU

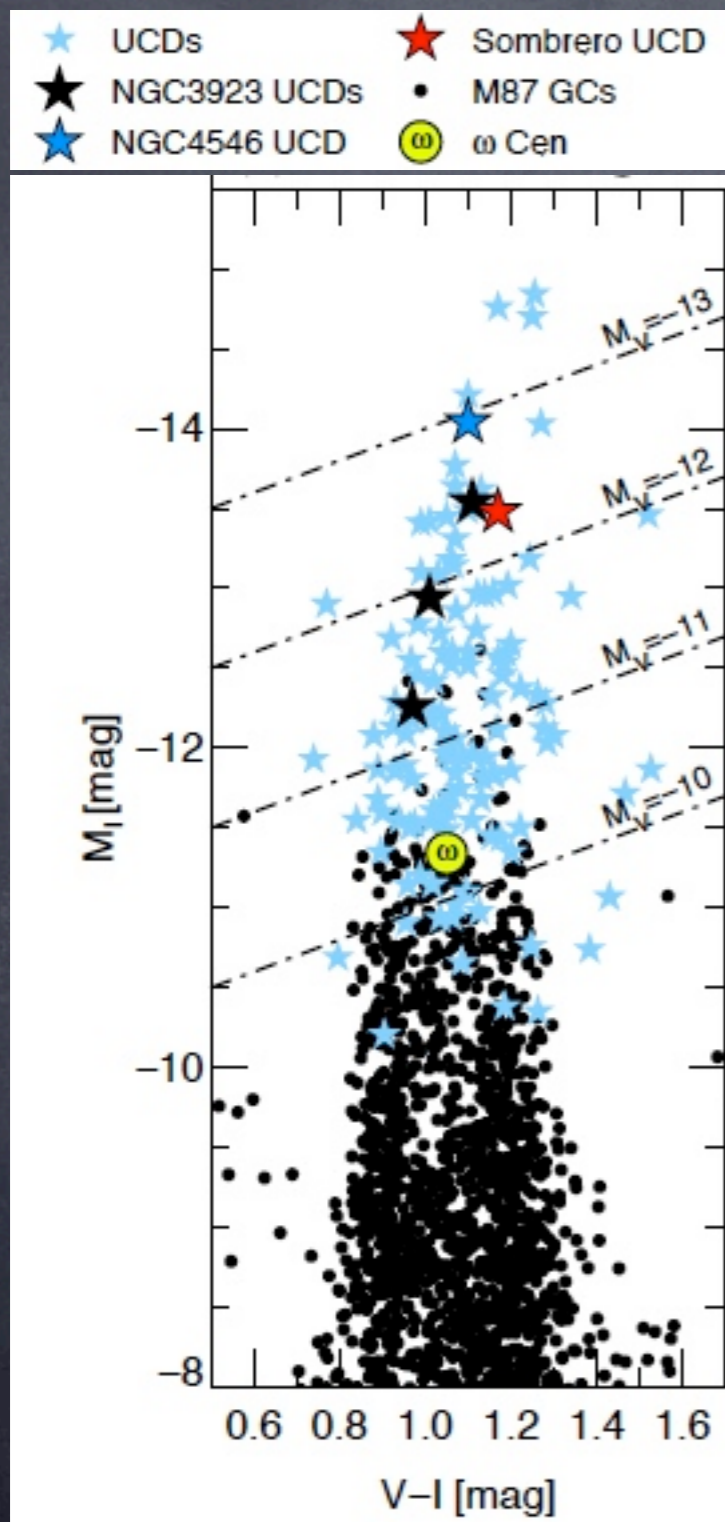


Early-type stellar systems in nearby clusters: from star clusters to galaxies

Ingo Misgeld (USM/ESO),

Michael Hilker, Steffen Mieske, Tom Richtler, Iskren Georgiev, Ylva Schuberth

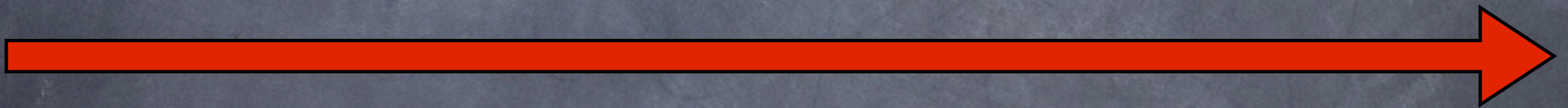
Ultra-compact dwarf galaxies (UCDs) vs. globular clusters (GCs)



- ⊙ typical UCD luminosities:
 $-13.5 < M_V < -11.0$ mag
- ⊙ UCD half-light radii:
 $10 < r_h < 100$ pc
- ⊙ UCD masses:
 $2 \times 10^6 < m < 10^8 M_{\text{sol}}$
- ⊙ size-luminosity relation

UCDs in local galaxy clusters

Distance



UCDs in local galaxy clusters

e.g. Hilker+ 99, Drinkwater+ 00,
Phillipps+ 00, Mieske+ 04,
Gregg+ 09

Fornax

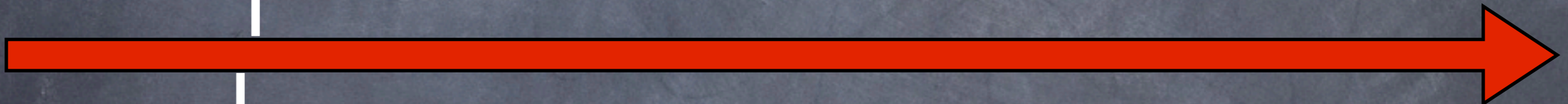
17 Mpc

Virgo

14 Mpc

e.g. Hasegan+ 05, Jones+ 06

Distance



UCDs in local galaxy clusters

e.g. Hilker+ 99, Drinkwater+ 00,
Phillipps+ 00, Mieske+ 04,
Gregg+ 09

Fornax

17 Mpc

Centaurus

45 Mpc

Distance

Virgo

14 Mpc

e.g. Hasegan+ 05, Jones+ 06

Antlia

35 Mpc

Caso et al. (POSTER)



UCDs in local galaxy clusters

e.g. Hilker+ 99, Drinkwater+ 00,
Phillipps+ 00, Mieske+ 04,
Gregg+ 09

Fornax

17 Mpc

e.g. Mieske+ 07, Mieske+ 09

Centaurus

45 Mpc

Distance

Virgo

14 Mpc

e.g. Hasegan+ 05, Jones+ 06

Antlia

35 Mpc

Caso et al. (POSTER)

Coma

95 Mpc

e.g. Price+ 09, Chiboucas+ 10,
Madrid+ 10 (POSTER)



Virgo
14 Mpc

Coma
95 Mpc

UCDs in local galaxy clusters

e.g. Hilker+ 99, Drinkwater+ 00,
Phillipps+ 00, Mieske+ 04,
Gregg+ 09

Fornax

17 Mpc

e.g. Mieske+ 07, Mieske+ 09

Centaurus

45 Mpc

Distance



Virgo

14 Mpc

Hydra I

42 Mpc

Coma

95 Mpc

e.g. Hasegan+ 05, Jones+ 06

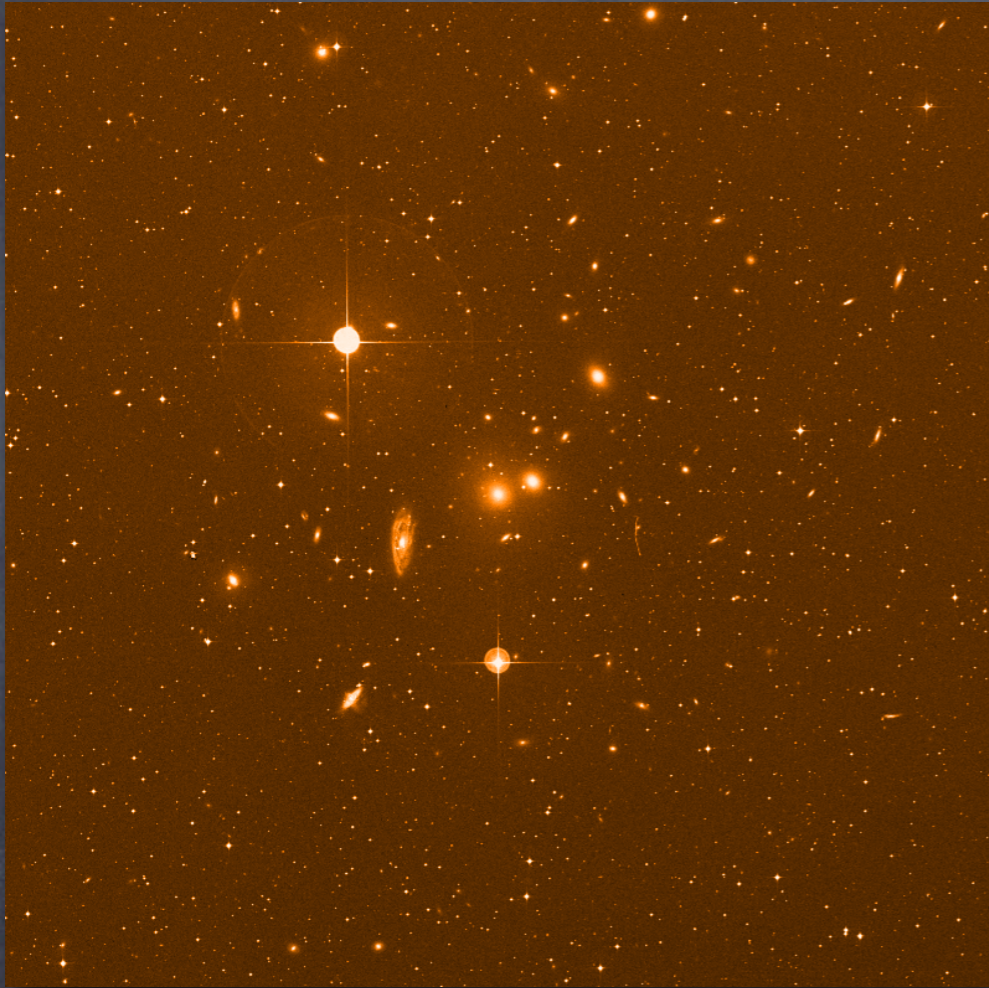
Antlia

35 Mpc

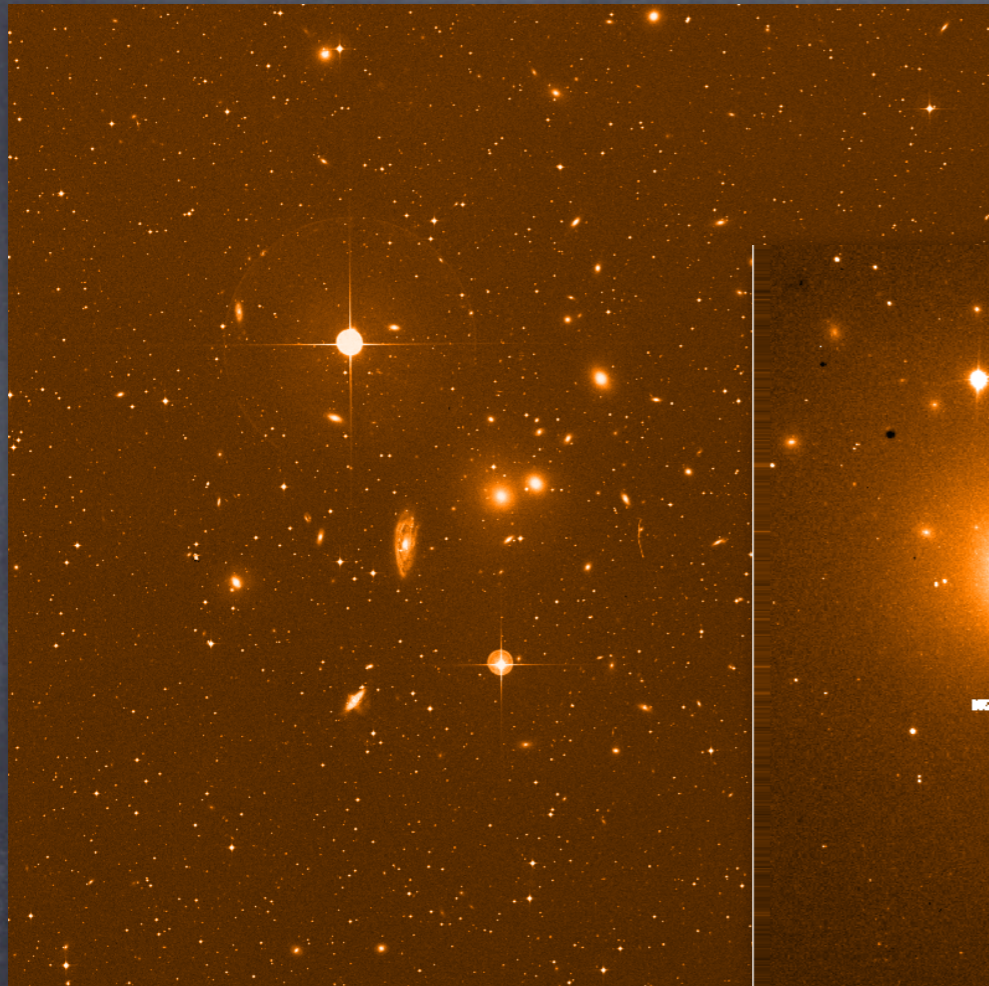
e.g. Price+ 09, Chiboucas+ 10,
Madrid+ 10 (POSTER)

Caso et al. (POSTER)

The Hydra I cluster

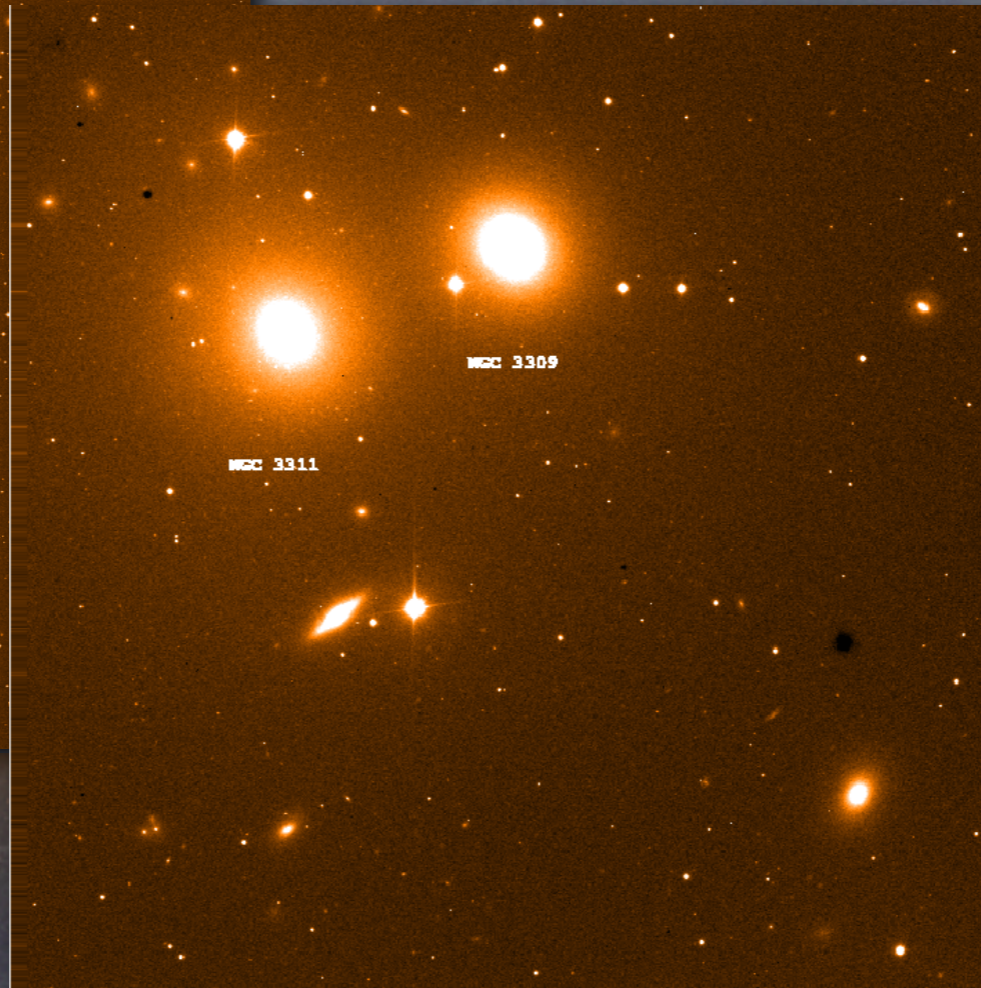


The Hydra I cluster



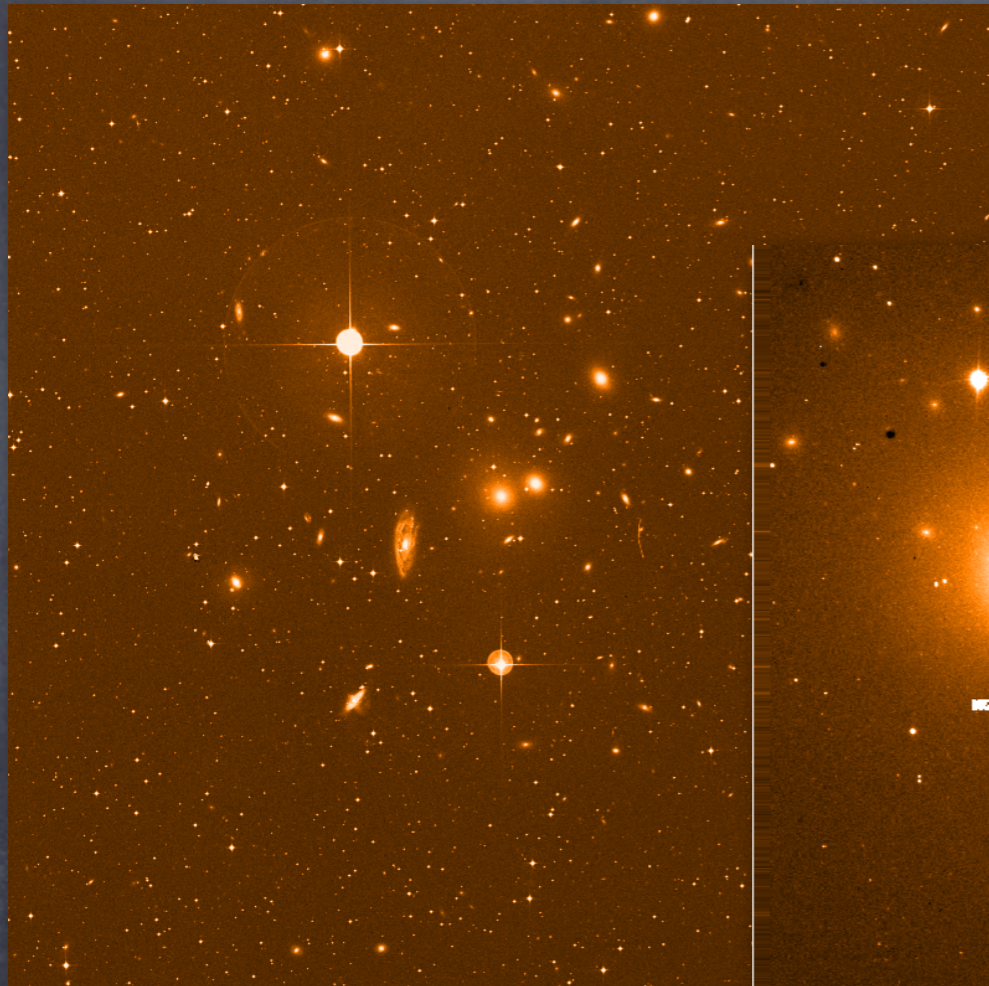
dominated by cD galaxy
NGC 3311

pronounced diffuse light component



extremely rich GC system
(van den Bergh 1977, McLaughlin et al. 1995,
Mieske et al. 2005, Wehner et al. 2008)

The Hydra I cluster



pronounced diffuse light component

extremely rich GC system

(van den Bergh 1977, McLaughlin et al. 1995, Mieske et al. 2005, Wehner et al. 2008)



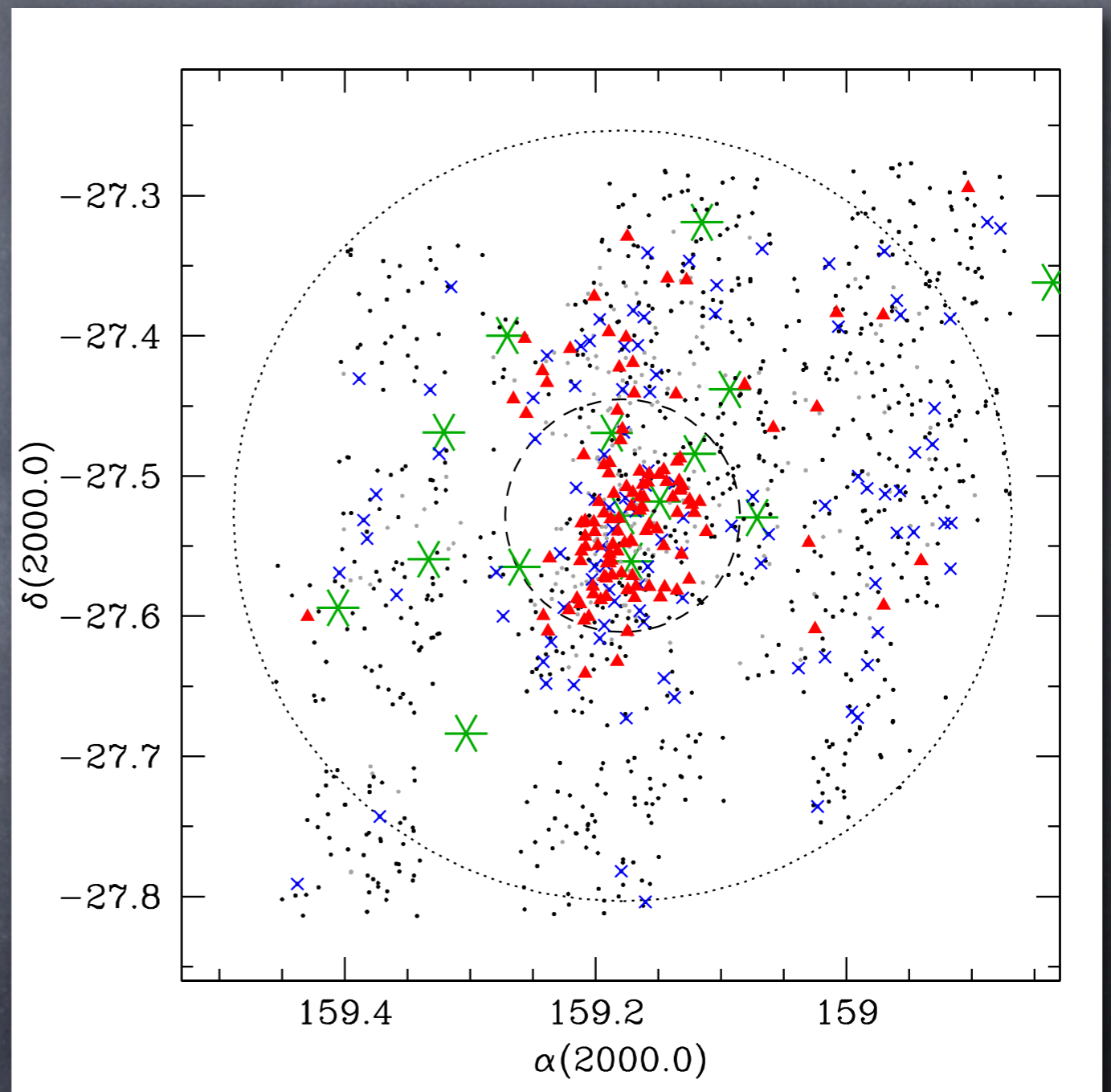
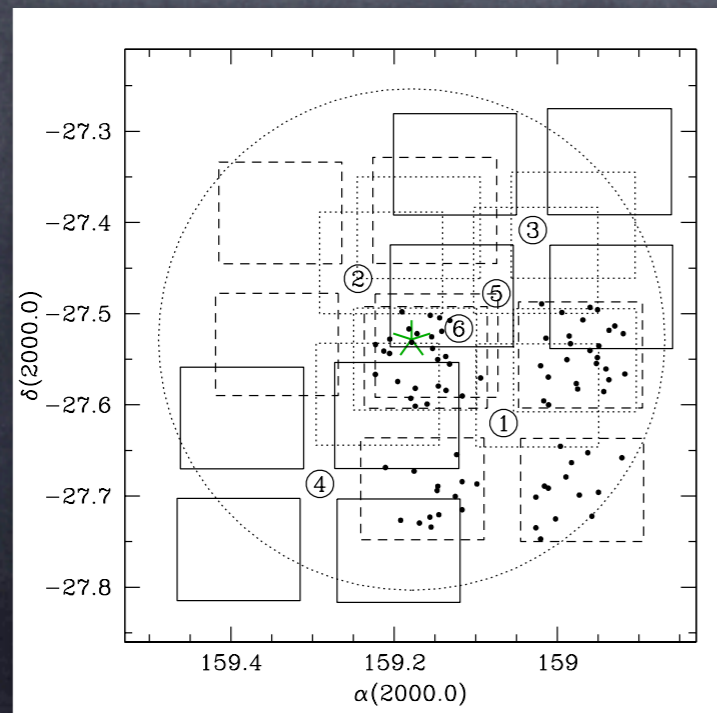
dominated by cD galaxy
NGC 3311

dust structure in the core of NGC 3311



A spectroscopic search for UCDs in Hydra I

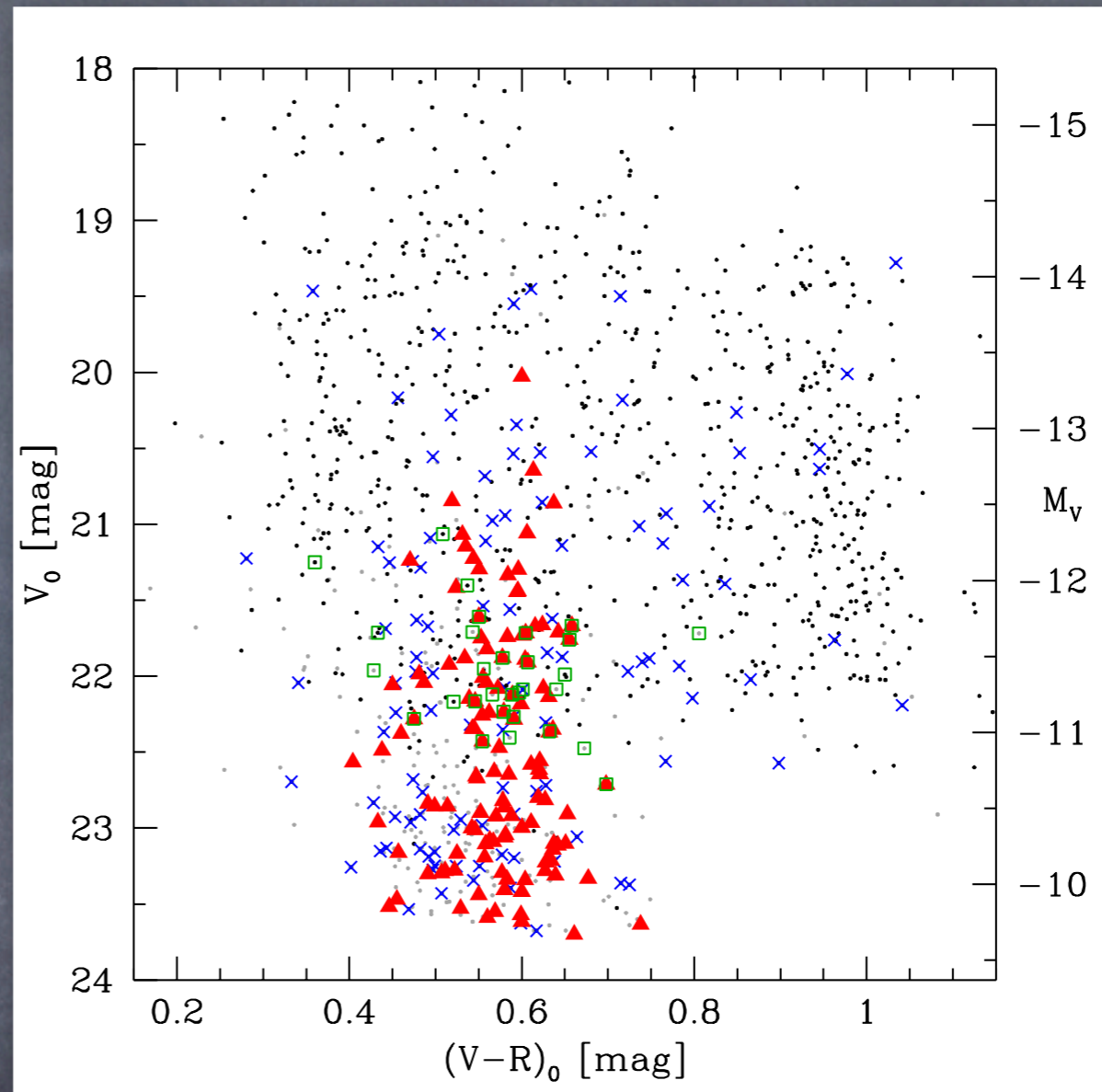
- 6 VIMOS pointings in the cluster core region
(PIs: I. Misgeld, T. Richtler)
- ~1200 medium resolution spectra of GC/UCD candidates
- ~1000 radial velocities (>80%)



Misgeld et al. 2011, arXiv:1103.5463

Photometry I (VIMOS)

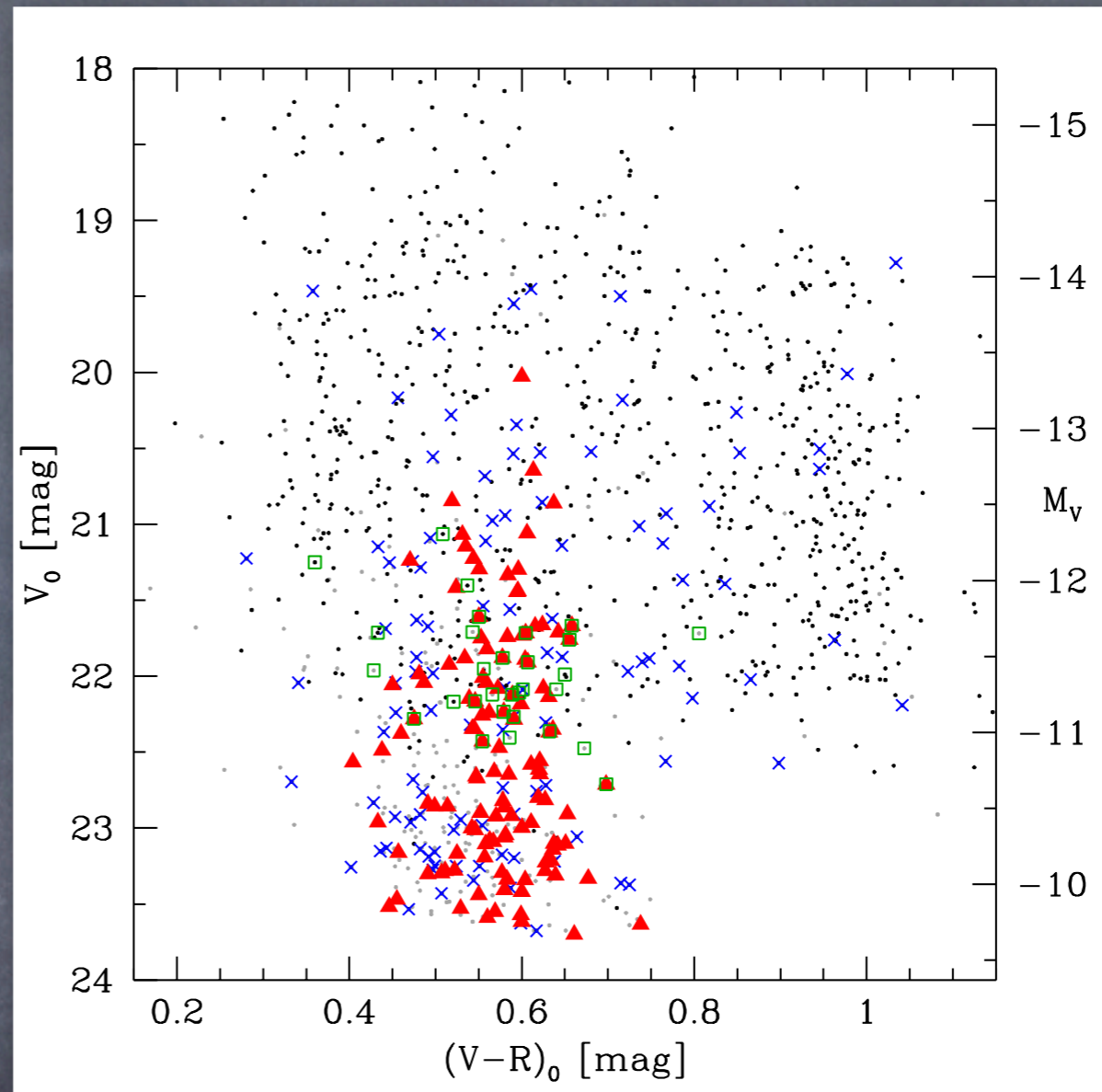
118 cluster GCs/UCDs



Photometry I (VIMOS)

118 cluster GCs/UCDs

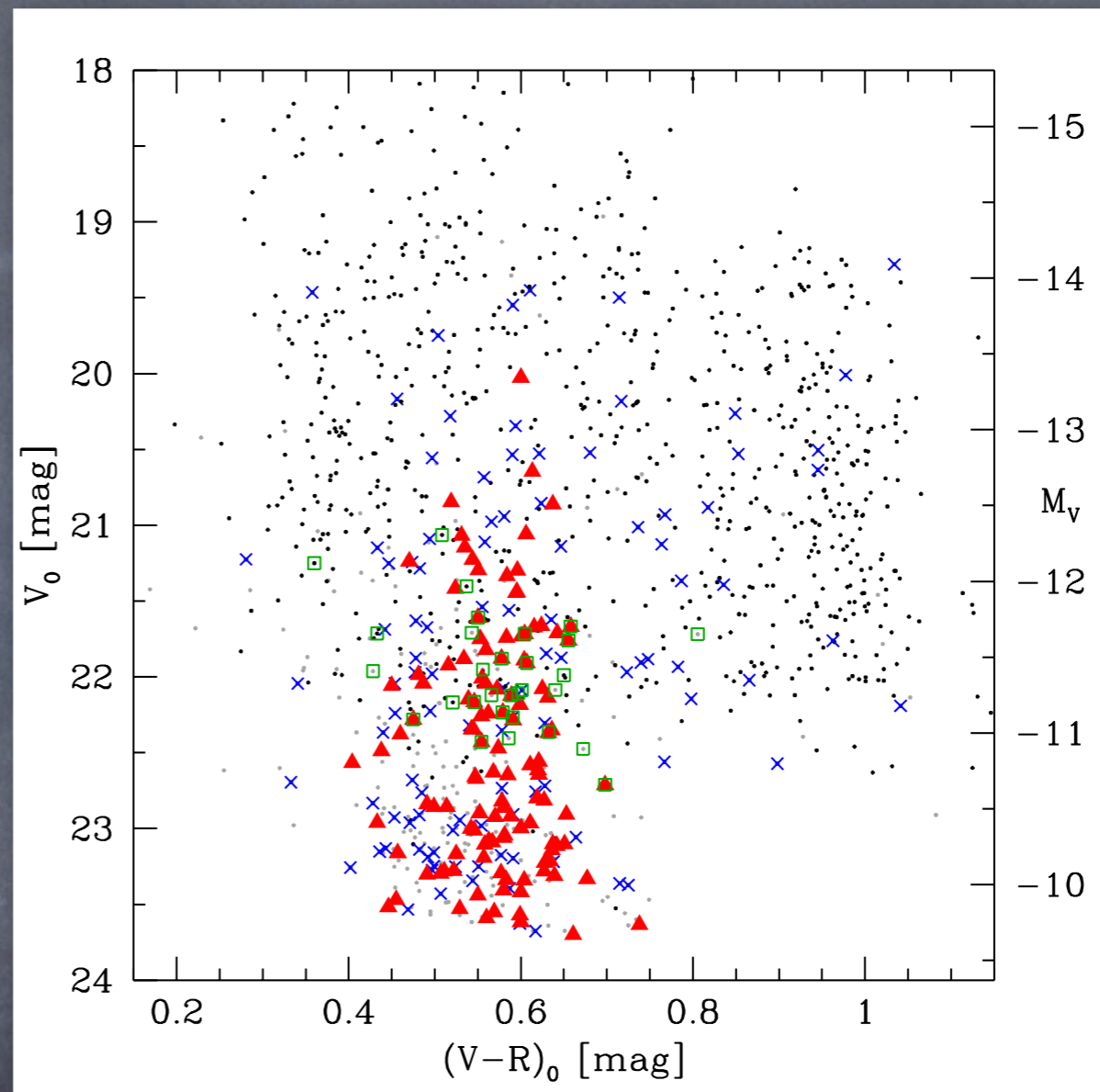
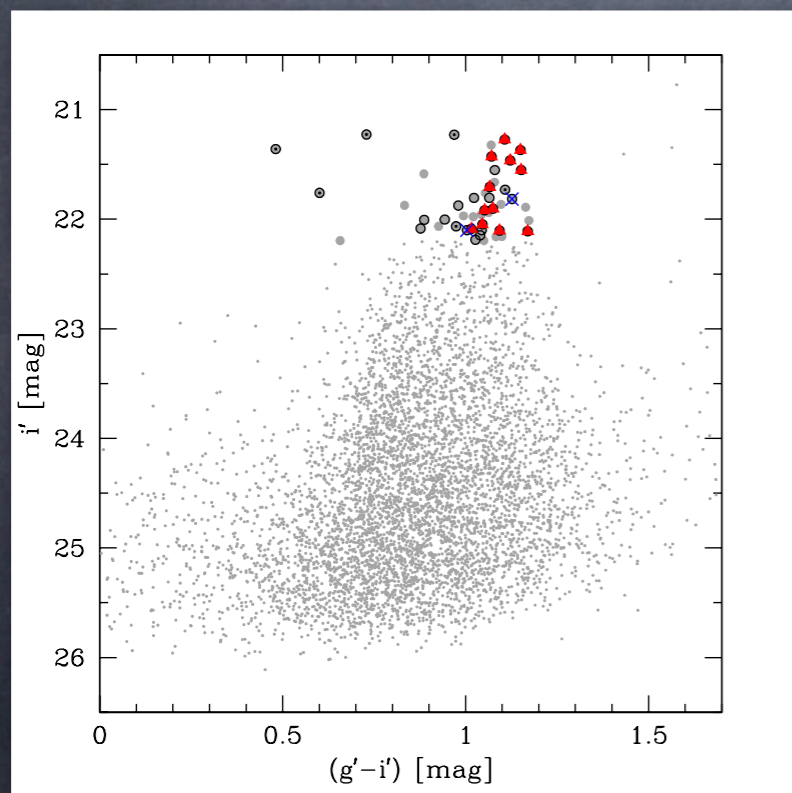
more than 50 objects brighter
than $M_V = -11.0$ mag
(mass $> 6.5 \times 10^6 M_{\text{sol}}$,
assuming $M/L = 3$)



Photometry I (VIMOS)

118 cluster GCs/UCDs

more than 50 objects brighter
than $M_V = -11.0$ mag
(mass $> 6.5 \times 10^6 M_{\text{sol}}$,
assuming $M/L = 3$)

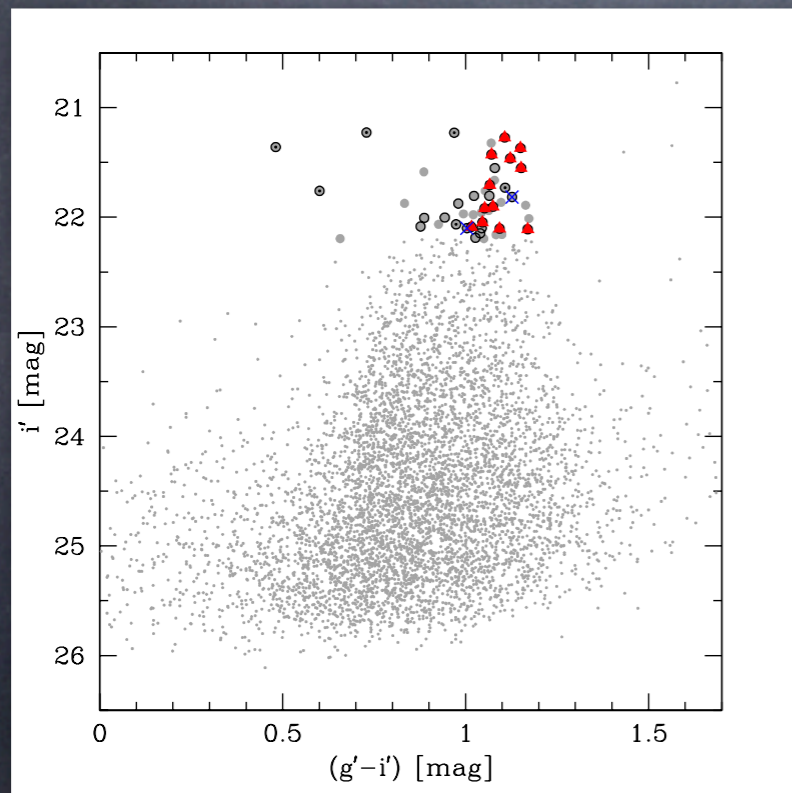


NGC 3311 GC CMD after Wehner & Harris 2007,
Wehner et al. 2008

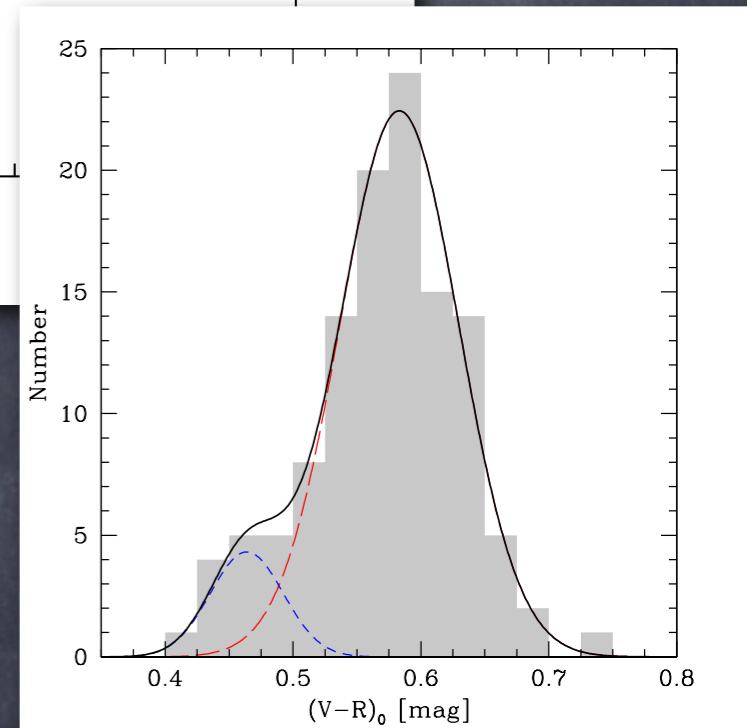
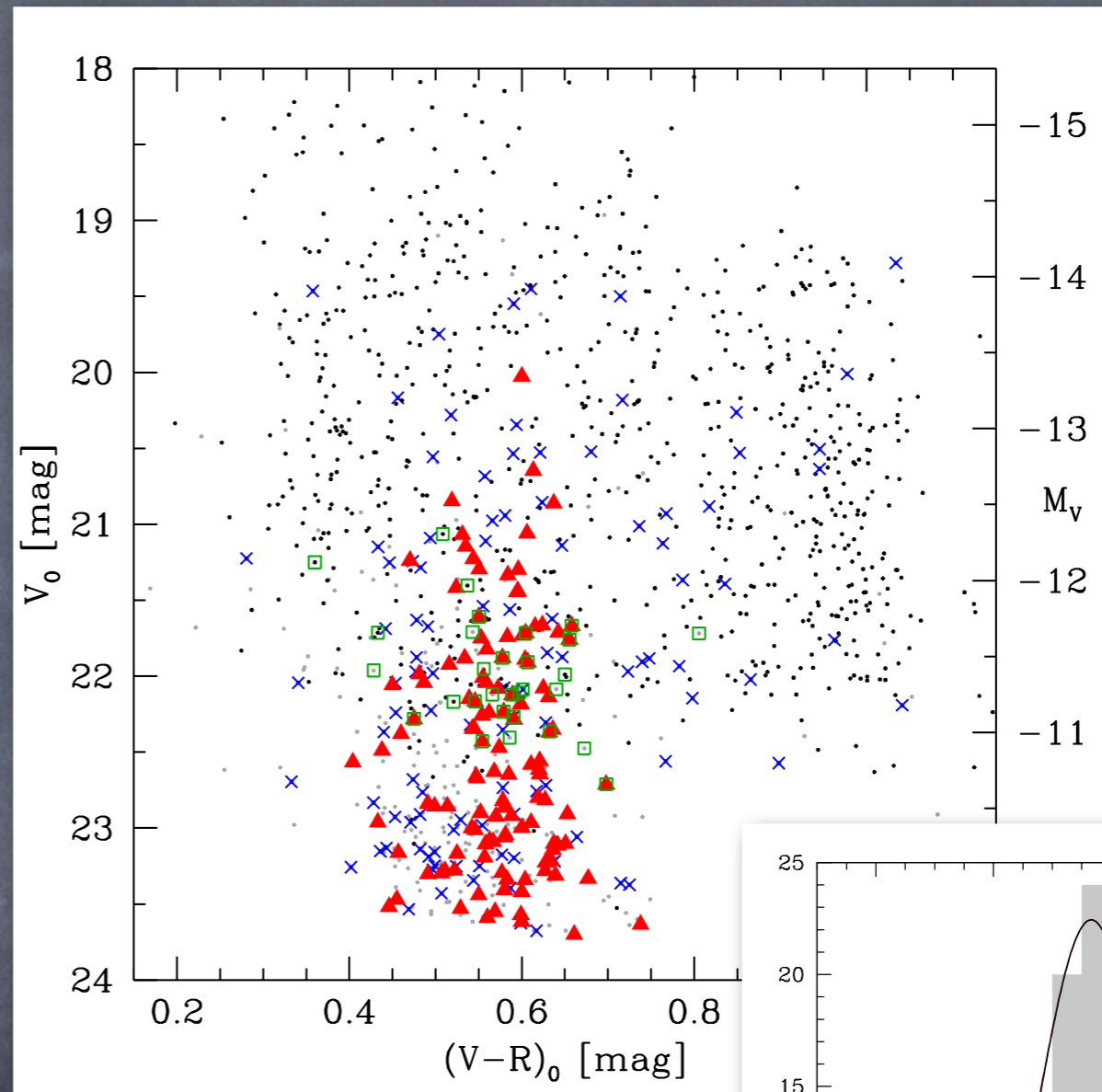
Photometry I (VIMOS)

118 cluster GCs/UCDs

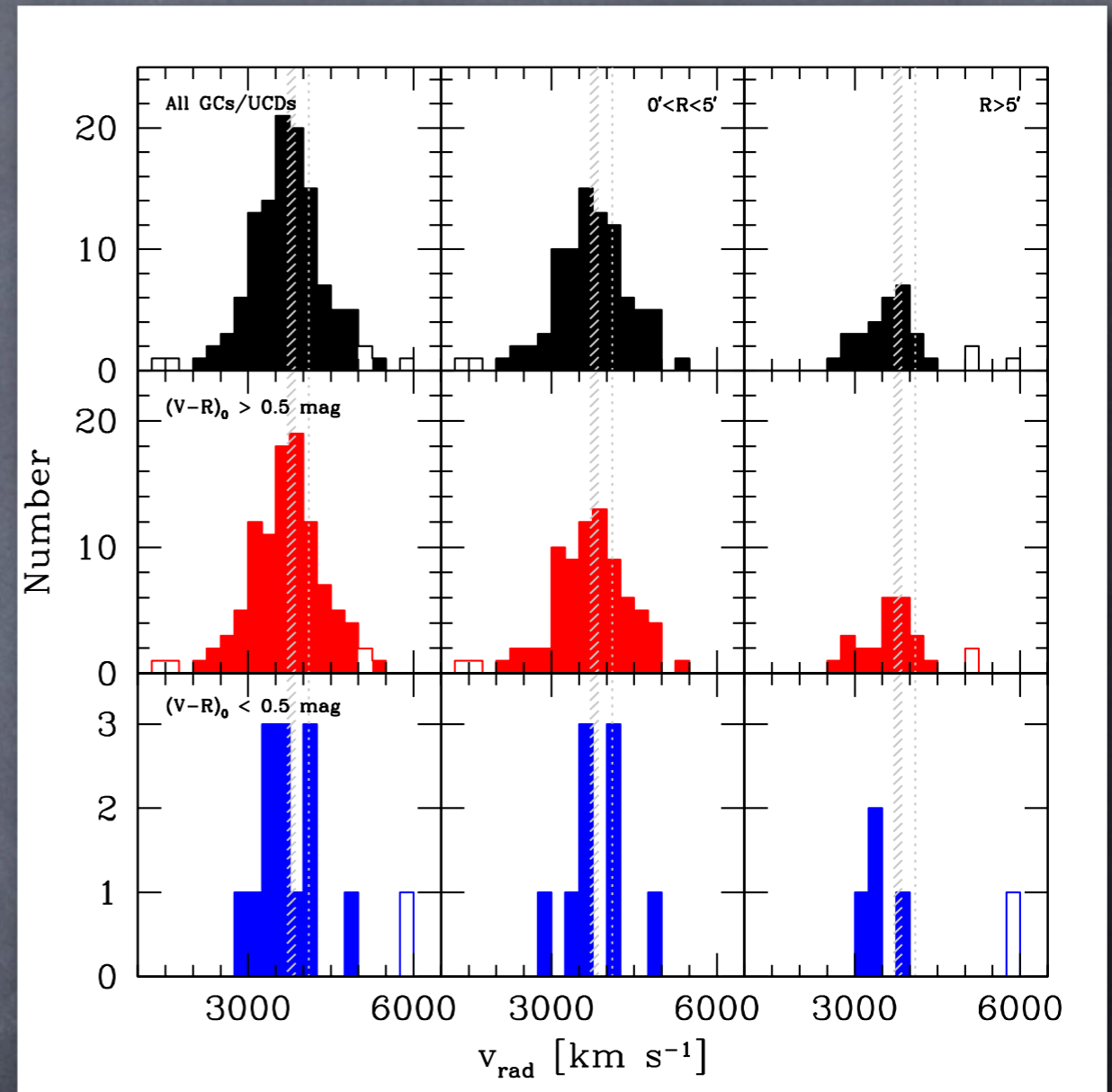
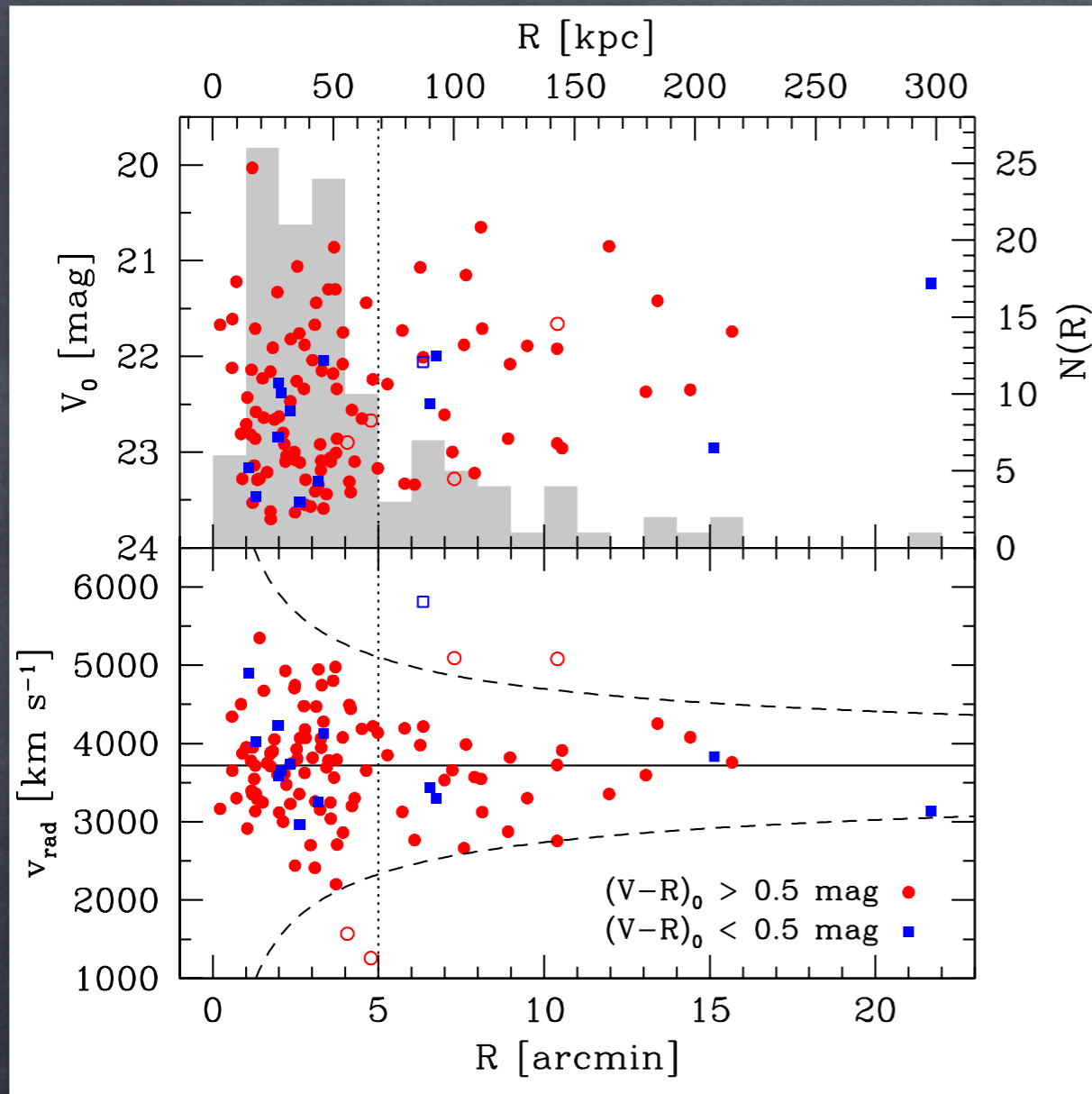
more than 50 objects brighter
than $M_V = -11.0$ mag
(mass $> 6.5 \times 10^6 M_{\text{sol}}$,
assuming $M/L = 3$)



NGC 3311 GC CMD after Wehner & Harris 2007,
Wehner et al. 2008

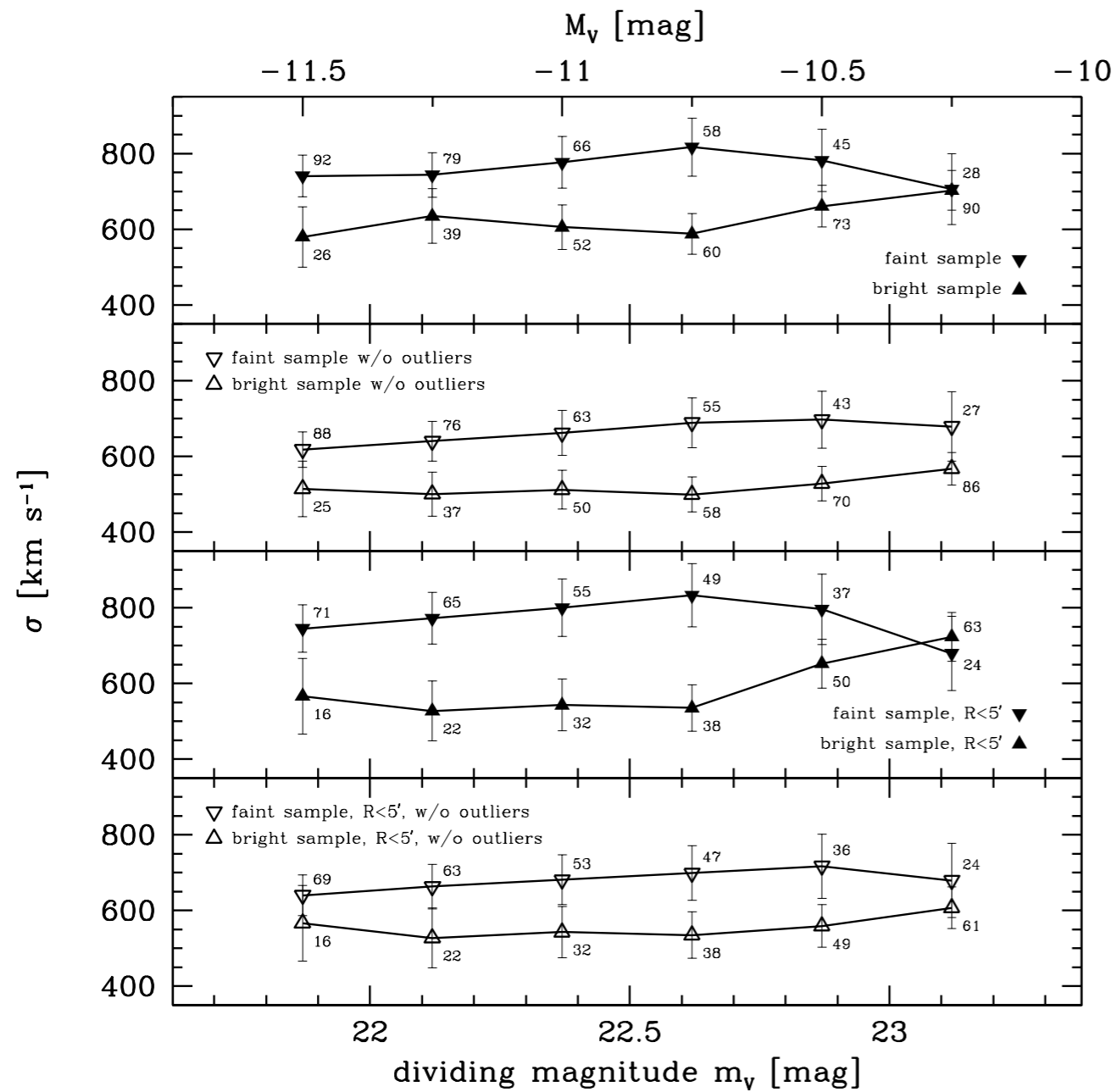


Kinematics I



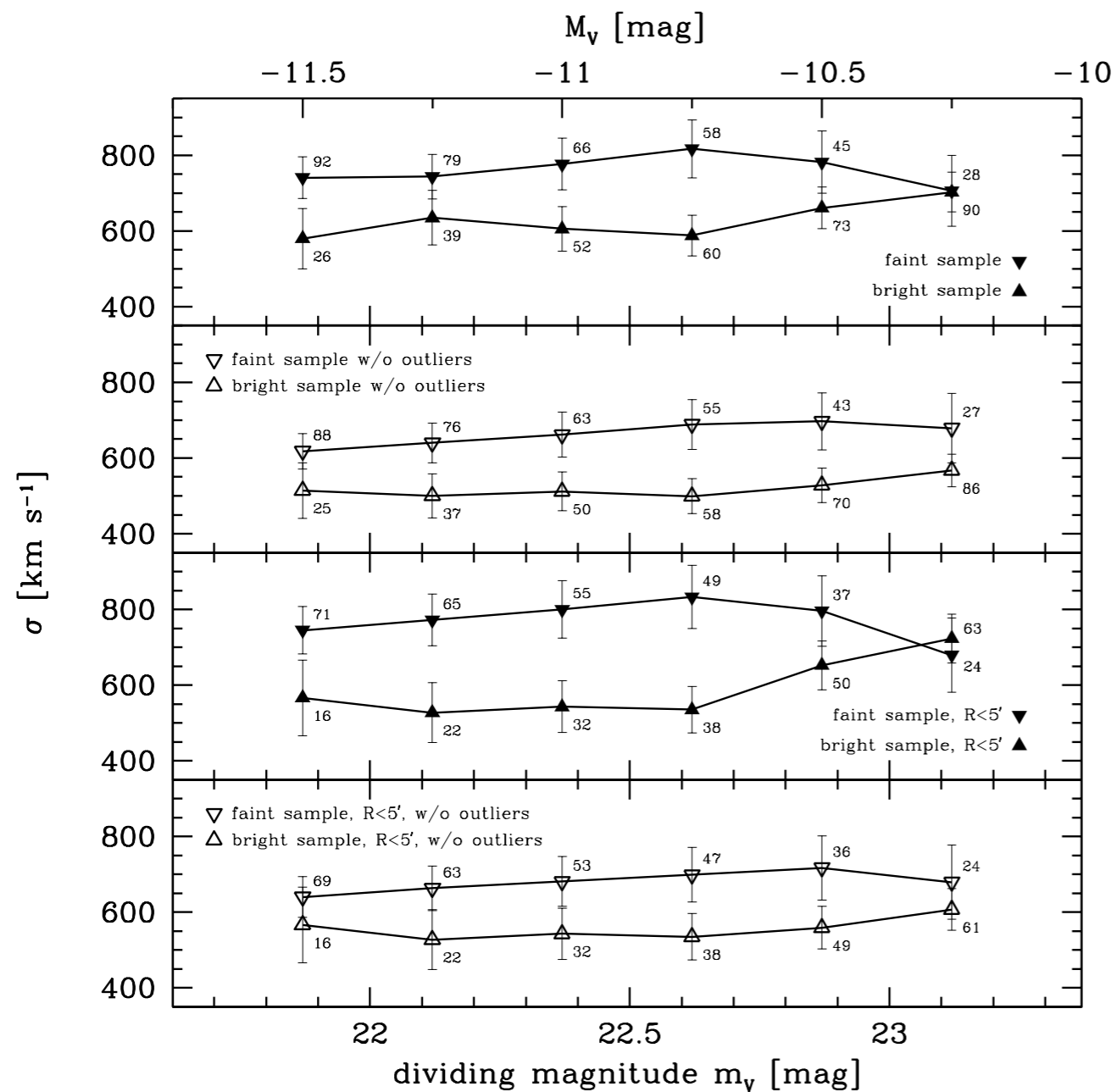
- mean $v_{\text{rad}} = 3717 \pm 65$ km/s, consistent with systemic velocity of NGC 3311 (NGC 3309 @ ~ 4100 km/s)
- $\sigma = 706 \pm 46$ km/s, comparable to galaxy velocity dispersion
- most objects are spatially and dynamically associated to the central cD galaxy

Kinematics II

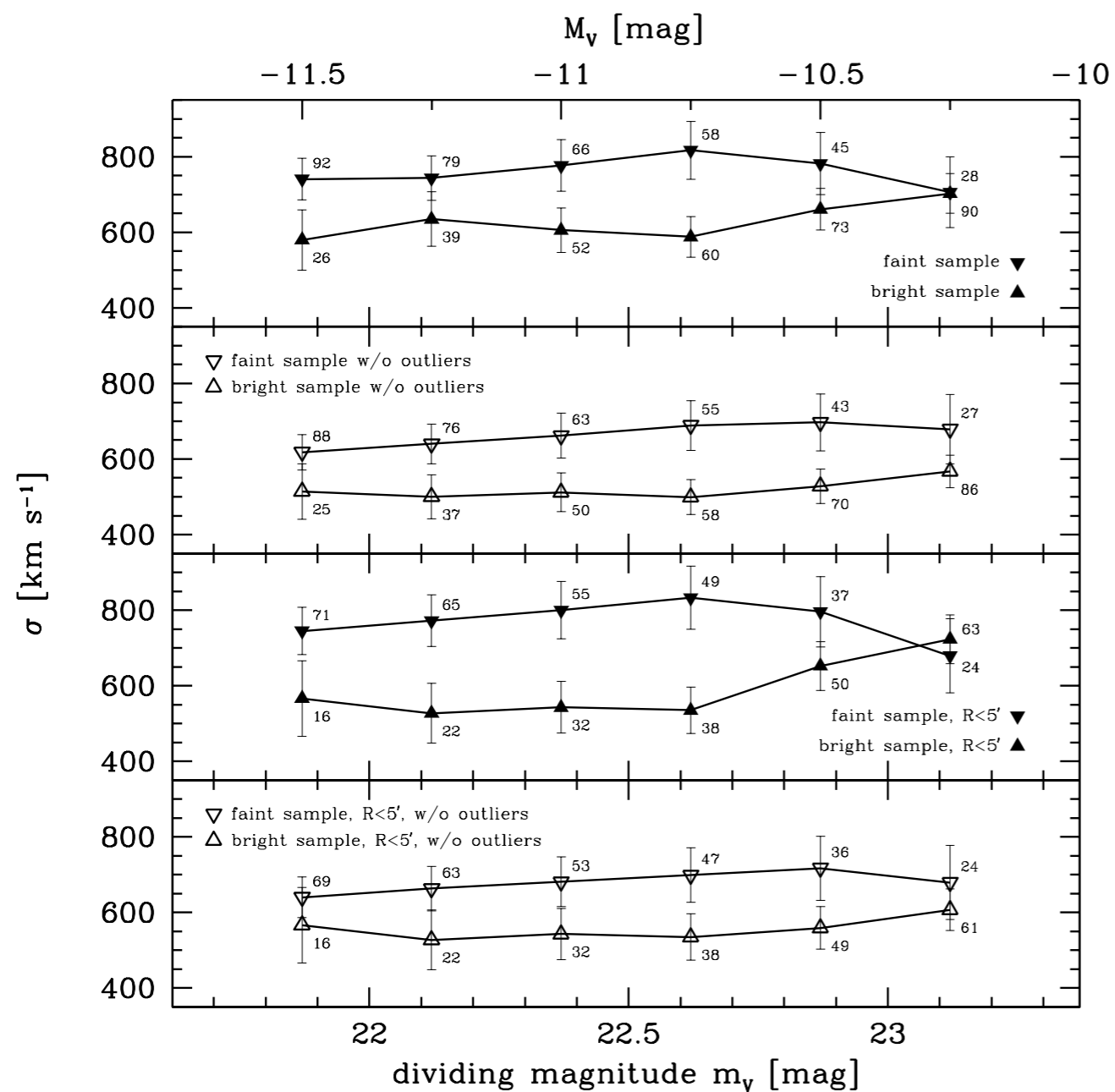


Kinematics II

- brighter GCs/UCDs have lower velocity dispersions

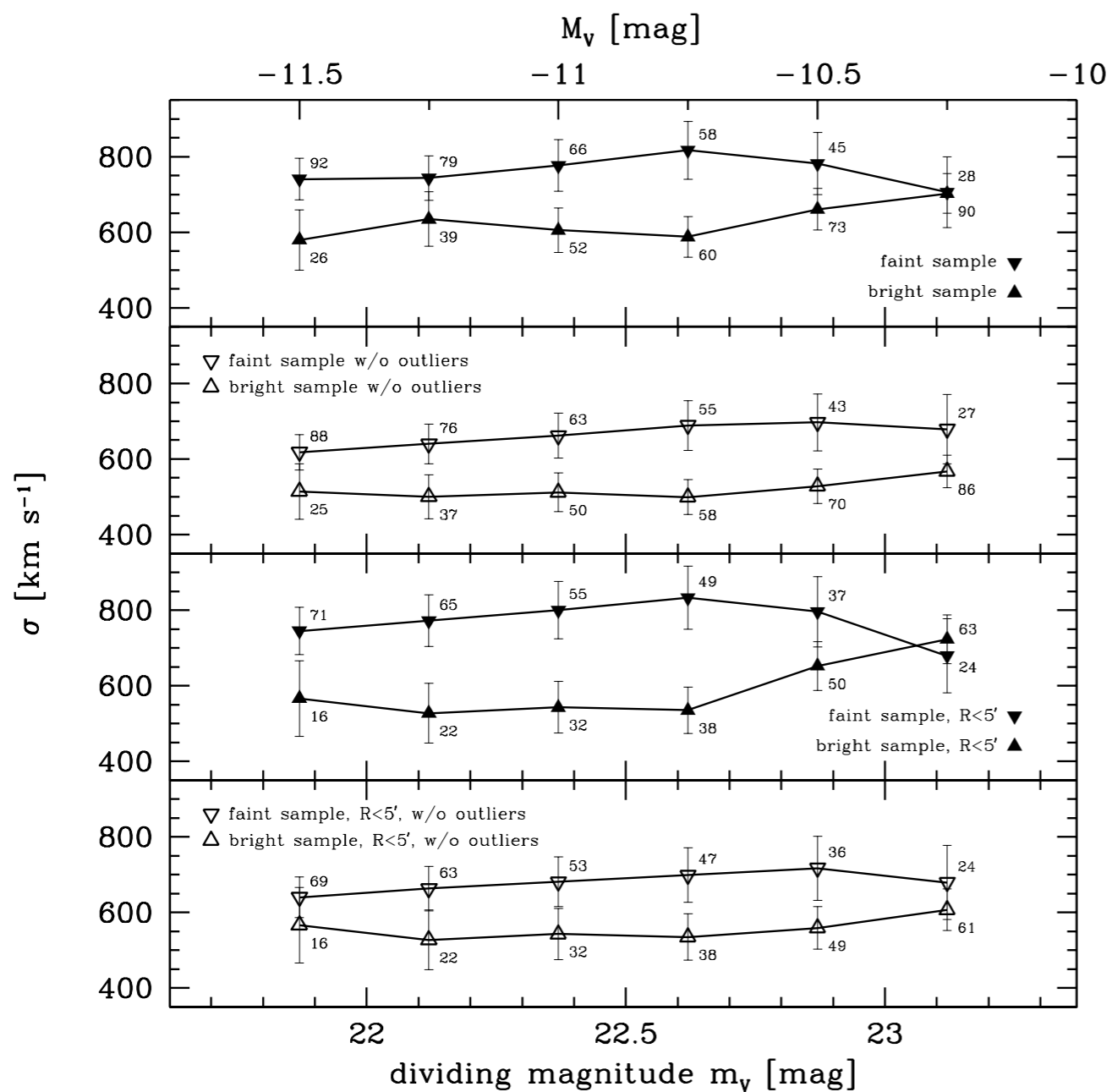


Kinematics II



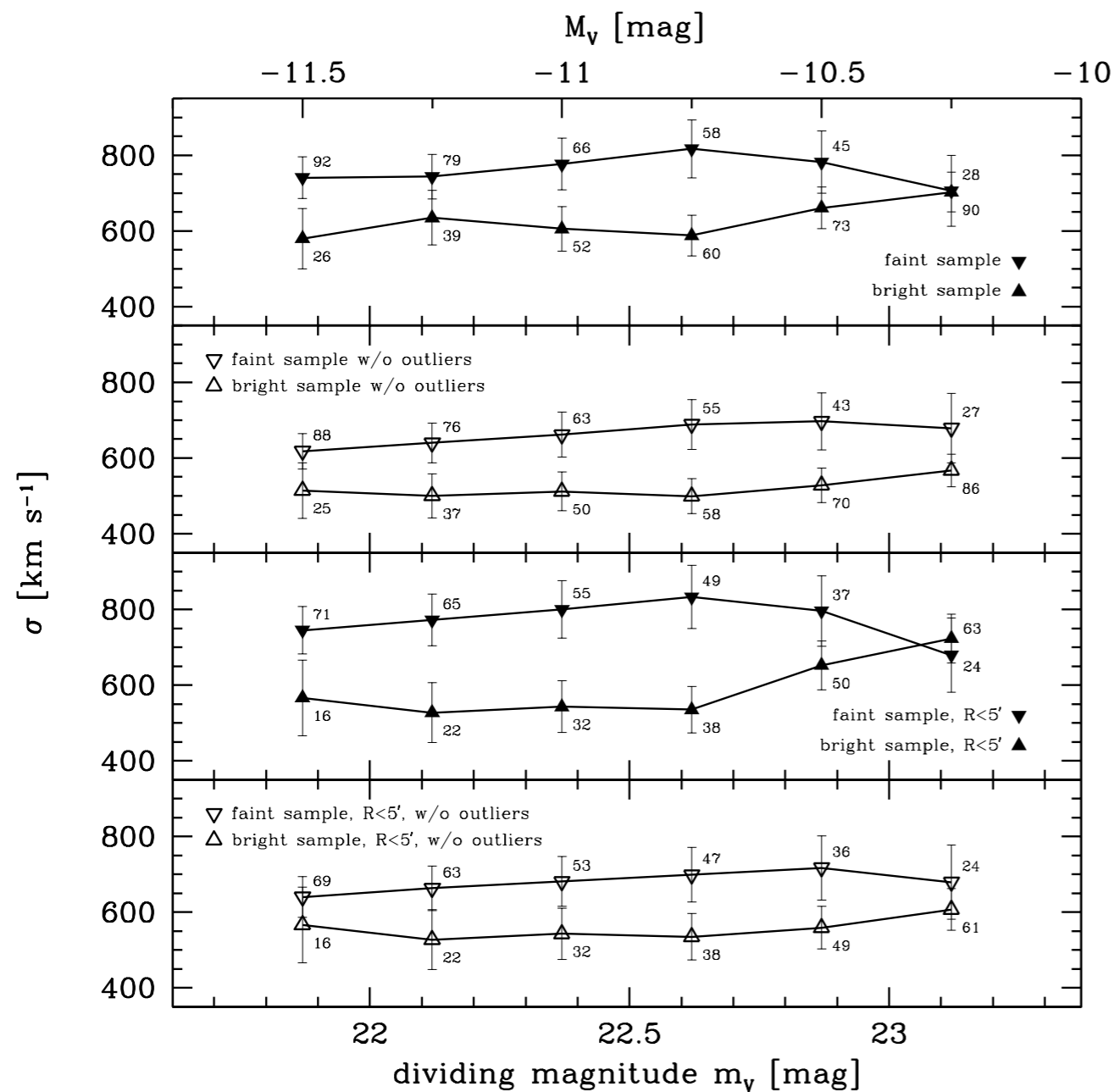
- brighter GCs/UCDs have lower velocity dispersions
- difference of ~ 300 km/s at $M_v = -10.75$ mag and $R < 5'$

Kinematics II



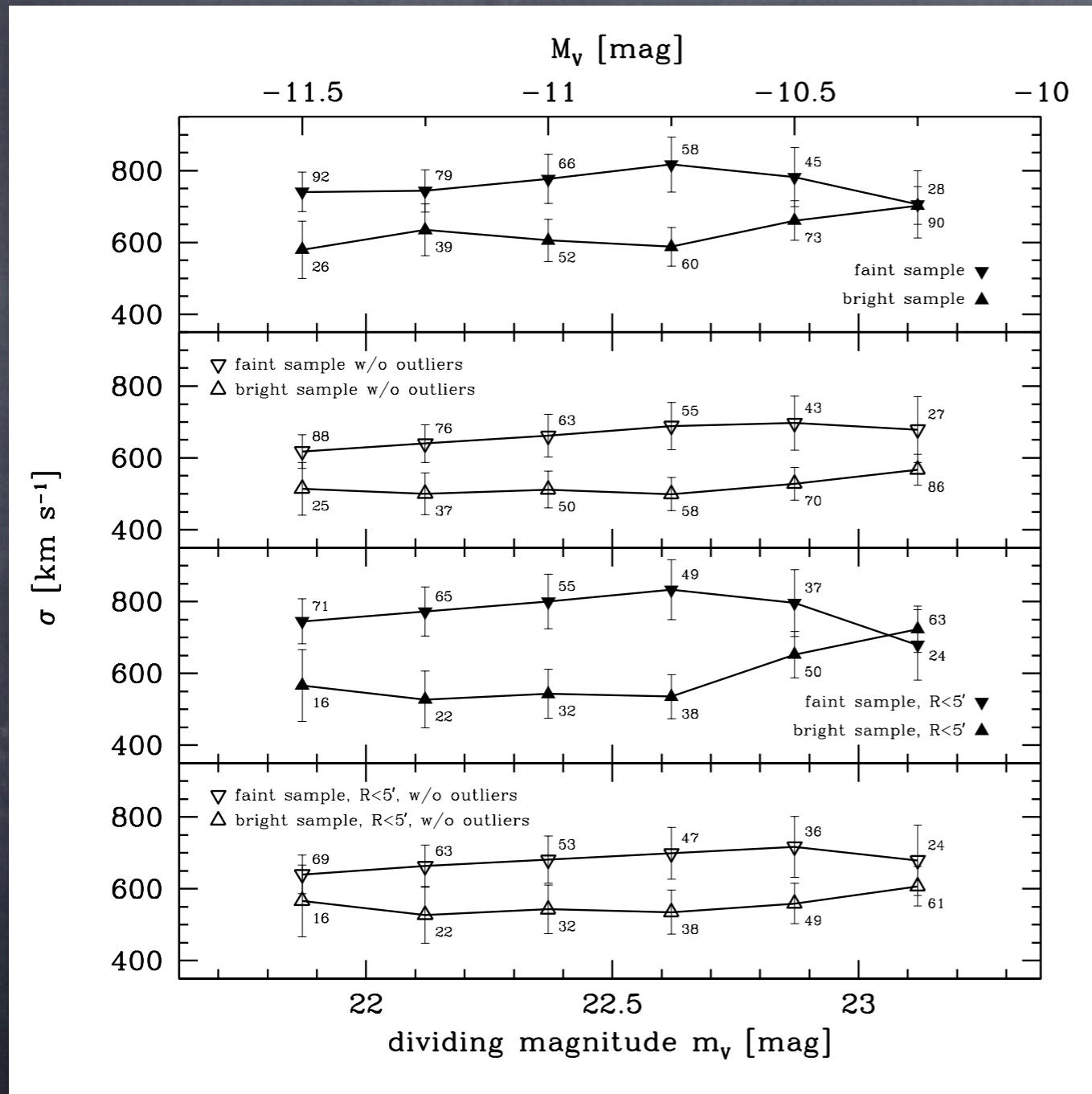
- brighter GCs/UCDs have lower velocity dispersions
- difference of ~ 300 km/s at $M_v = -10.75$ mag and $R < 5'$
- different number density profile for bright/faint objects?

Kinematics II



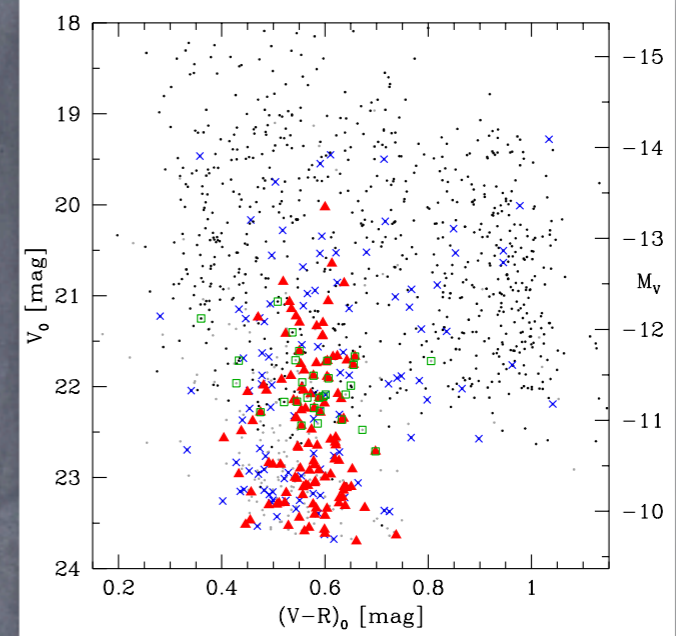
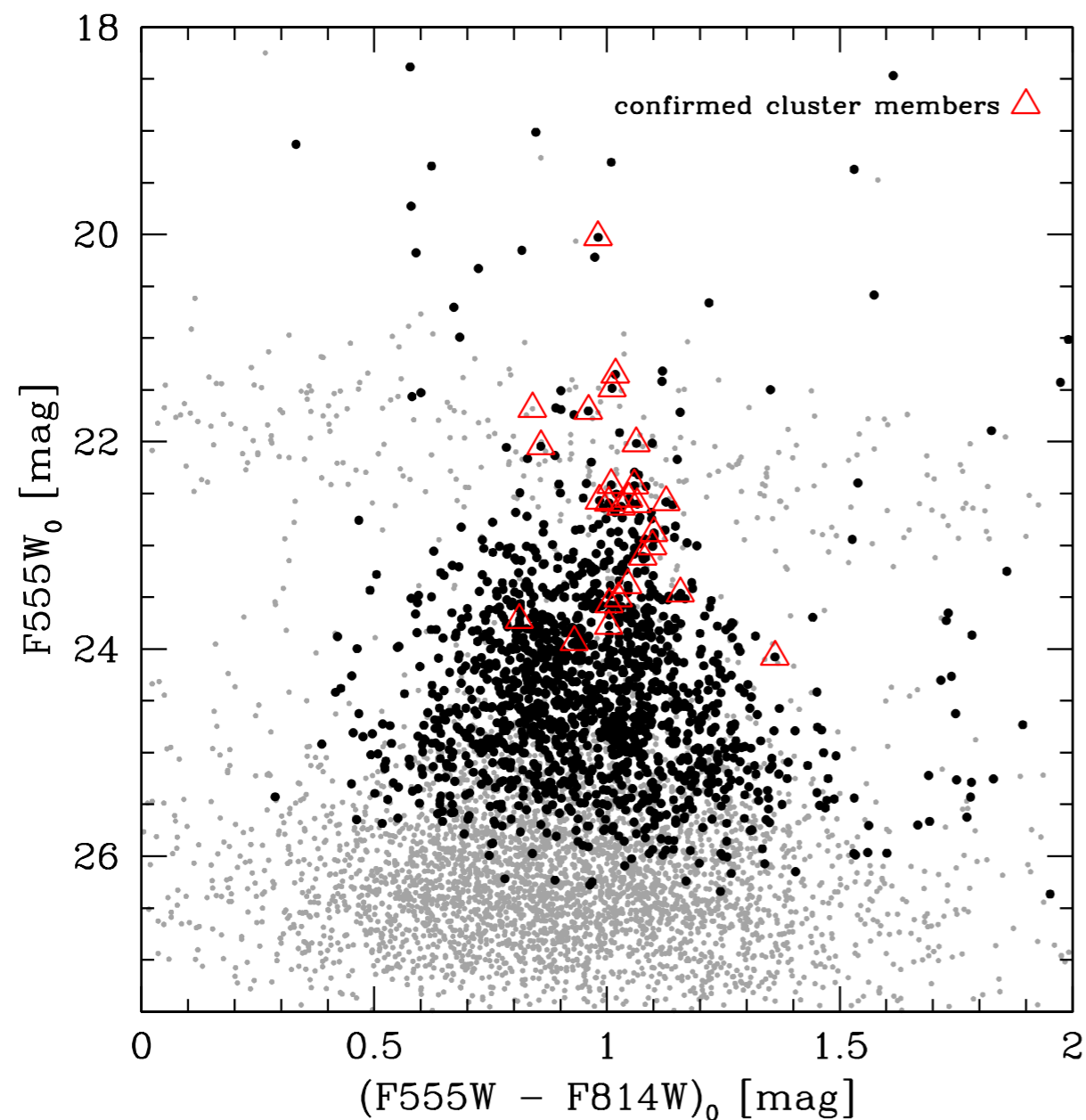
- brighter GCs/UCDs have lower velocity dispersions
- difference of ~ 300 km/s at $M_v = -10.75$ mag and $R < 5'$
- different number density profile for bright/faint objects?
- plausible in a scenario, where the brightest objects formed in violent starbursts

Kinematics II



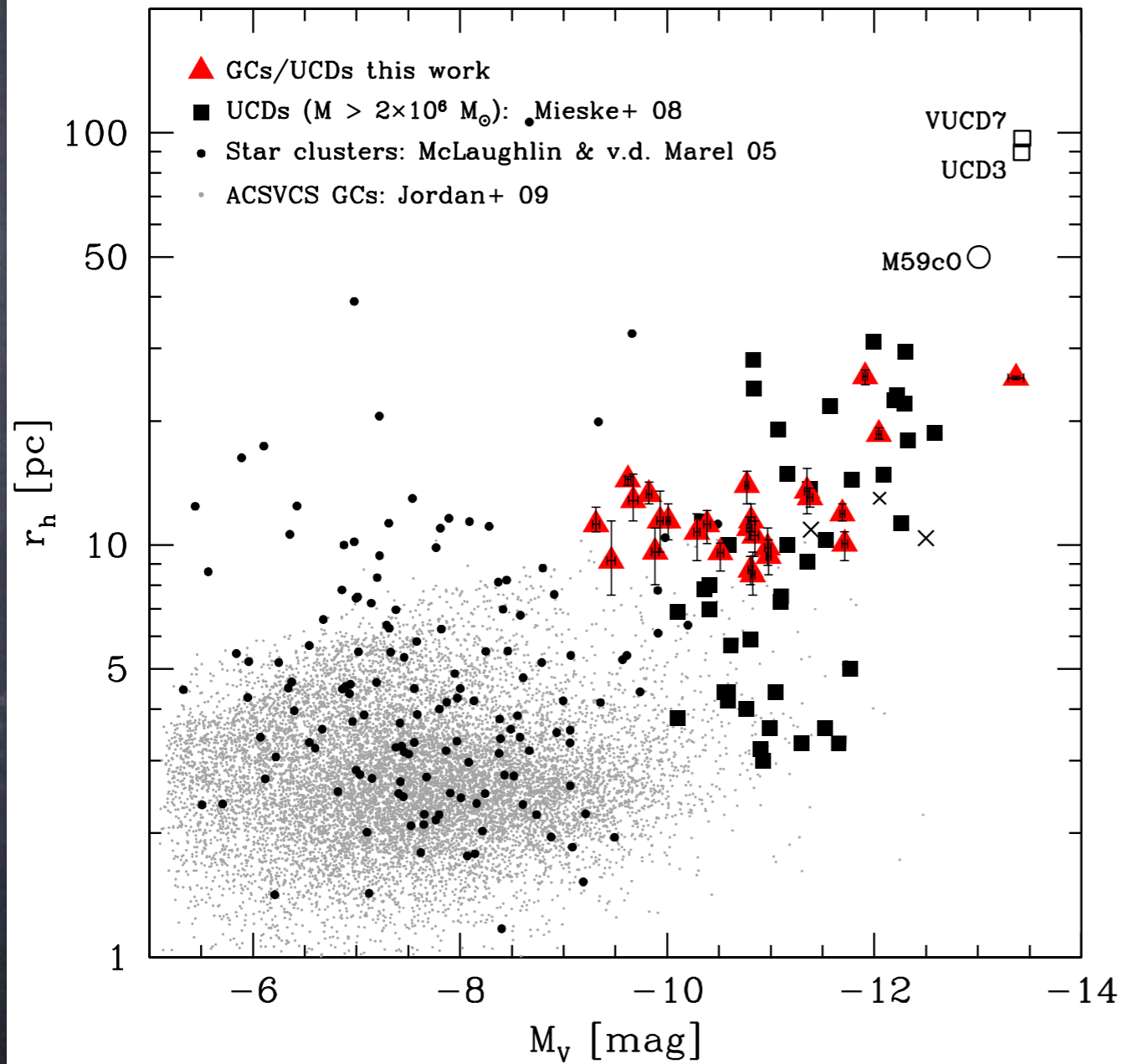
- brighter GCs/UCDs have lower velocity dispersions
- difference of ~ 300 km/s at $M_v = -10.75$ mag and $R < 5'$
- different number density profile for bright/faint objects?
- plausible in a scenario, where the brightest objects formed in violent starbursts
- complete photometric sample over larger radial range required

Photometry II (HST)

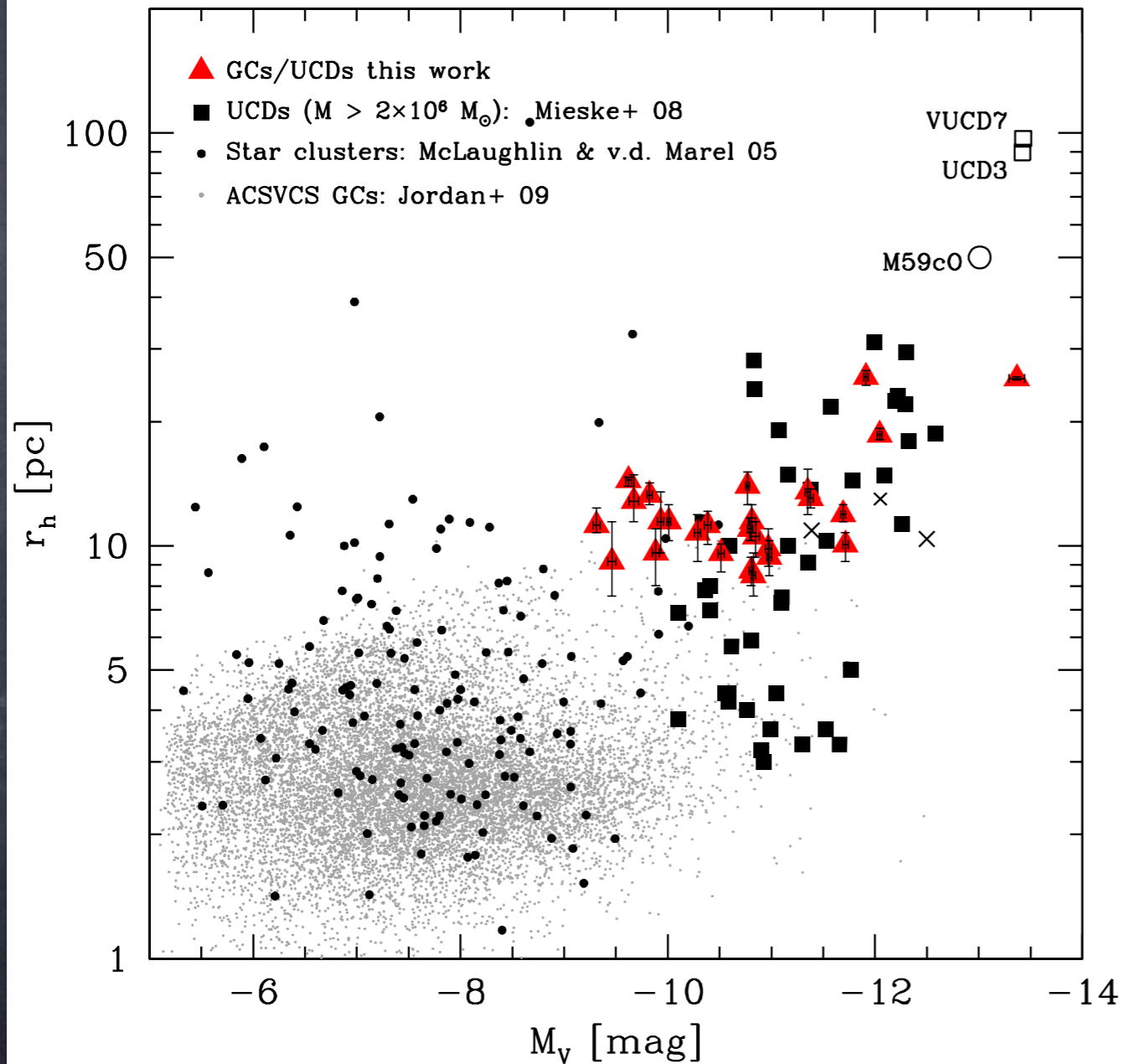


- 26 cluster GCs/UCDs with HST imaging
- brightest UCDs tend to extend the red GC population towards higher luminosities
(see also [Wehner et al. 2008](#))

UCD sizes



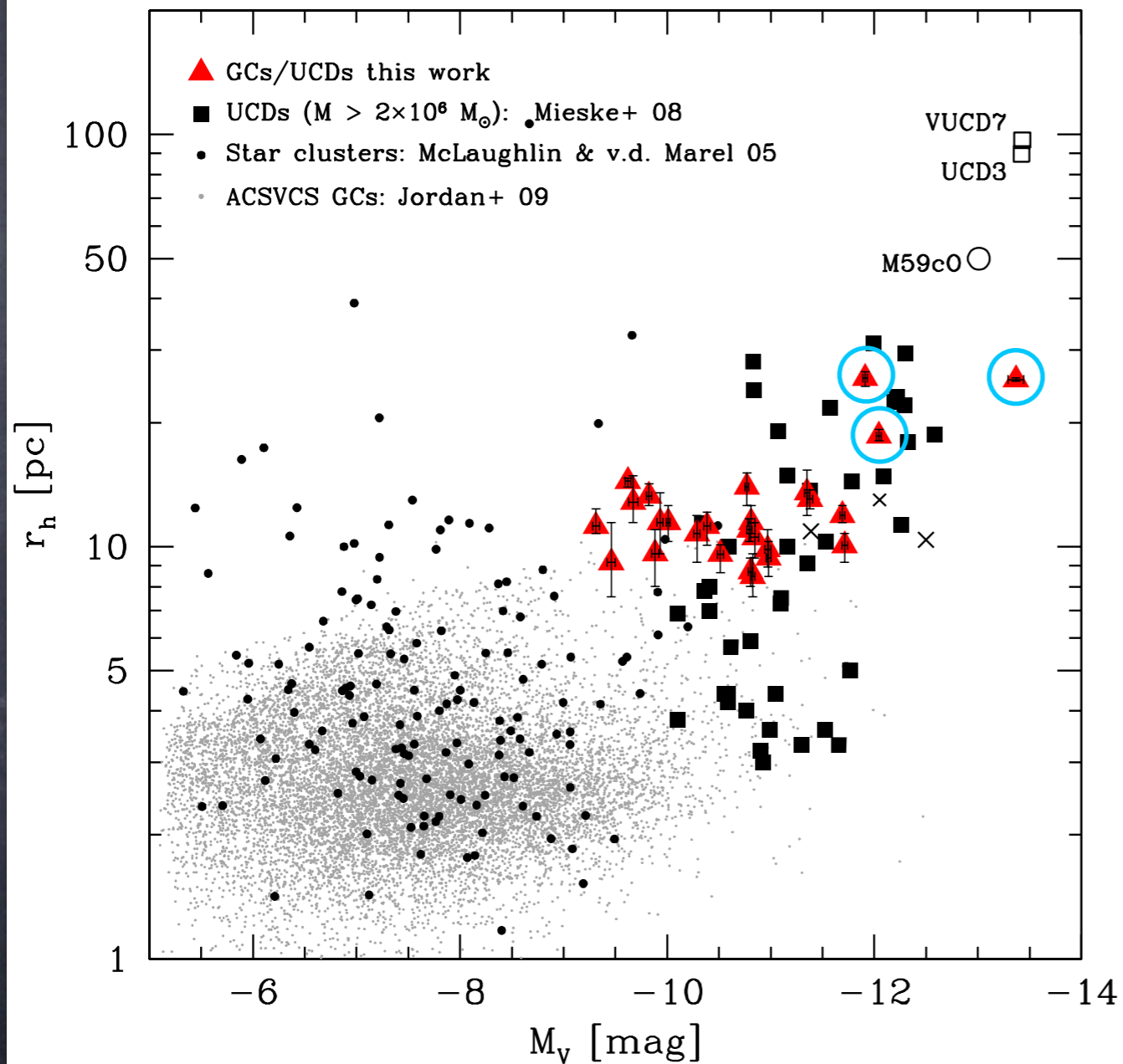
UCD sizes



- with $M_V = -13.4$ mag and $r_{\text{eff}} = 25.4$ pc, HUCD1 belongs to the most luminous and most massive UCDs ever discovered

- $M_{\text{HUCD1}} \approx 5 \times 10^7 M_{\text{sol}}$ ($M/L = 3$)
 $M_{\text{HUCD1}} \geq 1 \times 10^8 M_{\text{sol}}$ ($M/L \geq 5$)

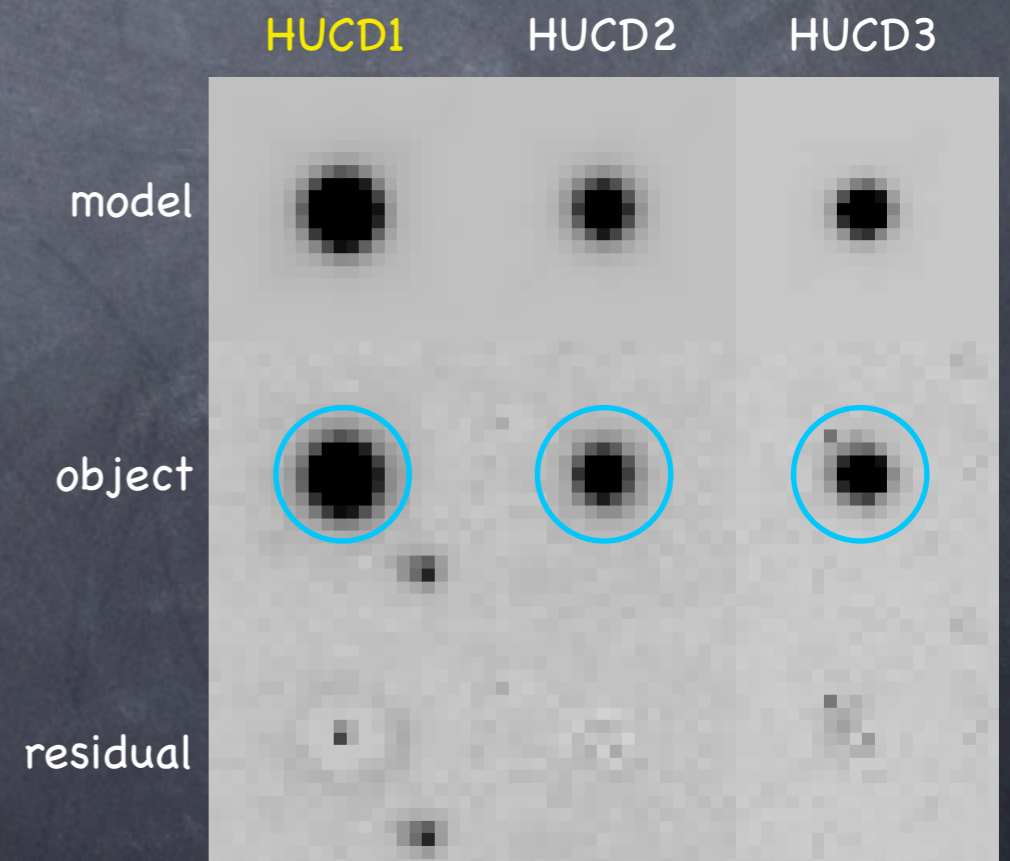
UCD sizes



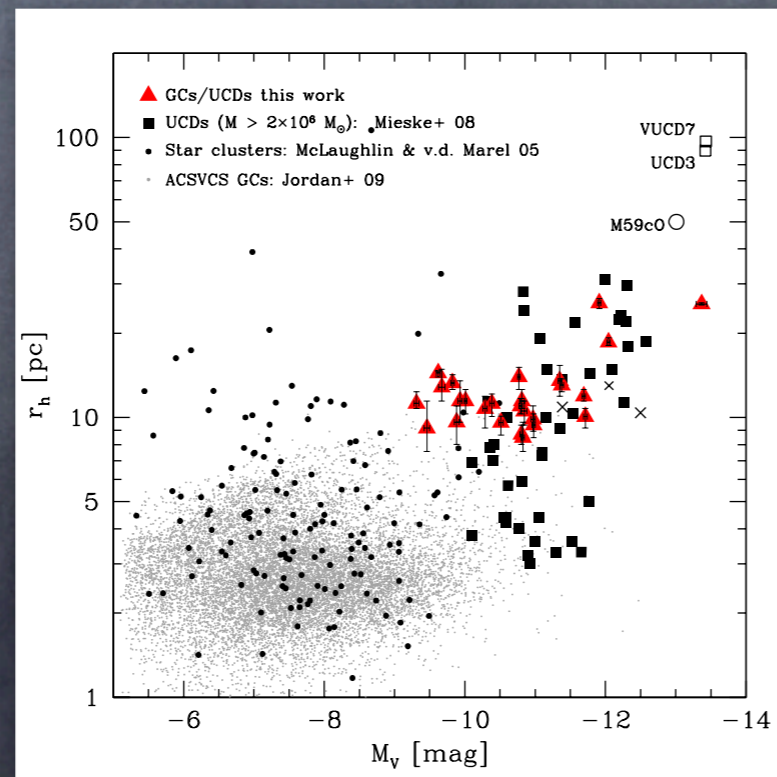
- with $M_V = -13.4$ mag and $r_{\text{eff}} = 25.4$ pc, HUCD1 belongs to the most luminous and most massive UCDs ever discovered

- $M_{\text{HUCD1}} \approx 5 \times 10^7 M_{\text{sol}}$ ($M/L = 3$)
 $M_{\text{HUCD1}} \geq 1 \times 10^8 M_{\text{sol}}$ ($M/L \geq 5$)

- HUCD1 is rather compact, but faint envelope?



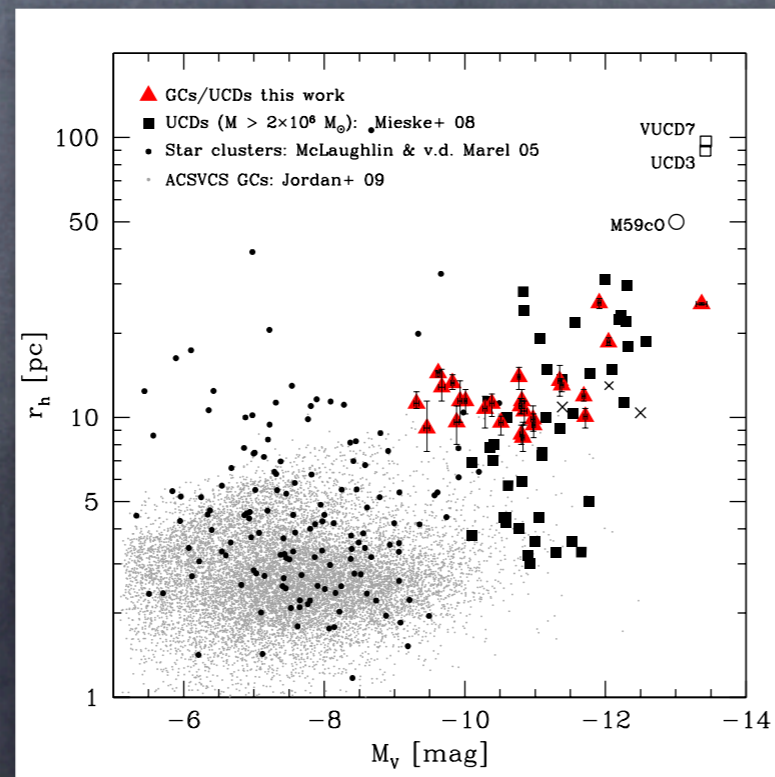
Families of dynamically hot stellar systems...



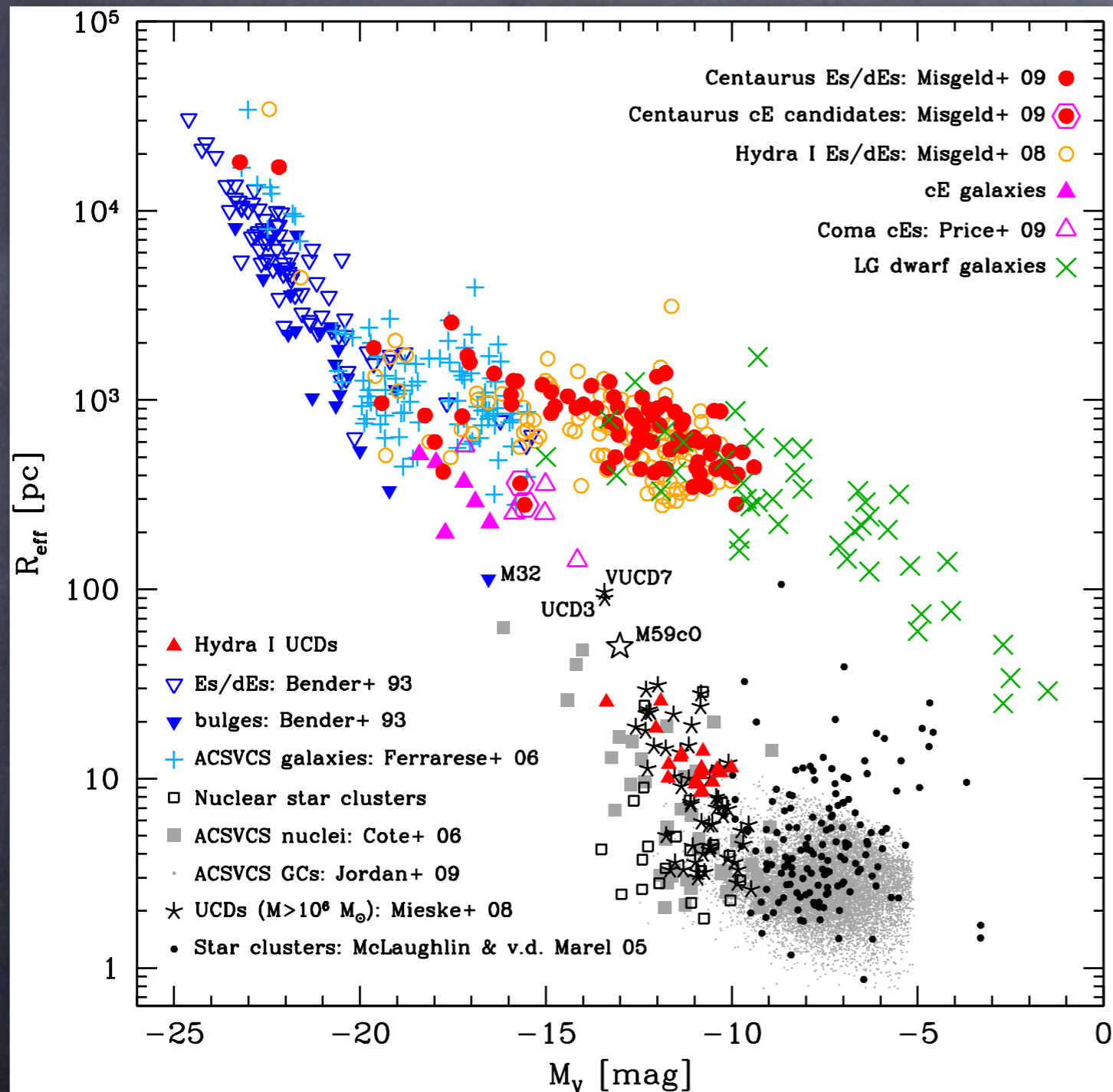
Families of

interesting

stellar systems...

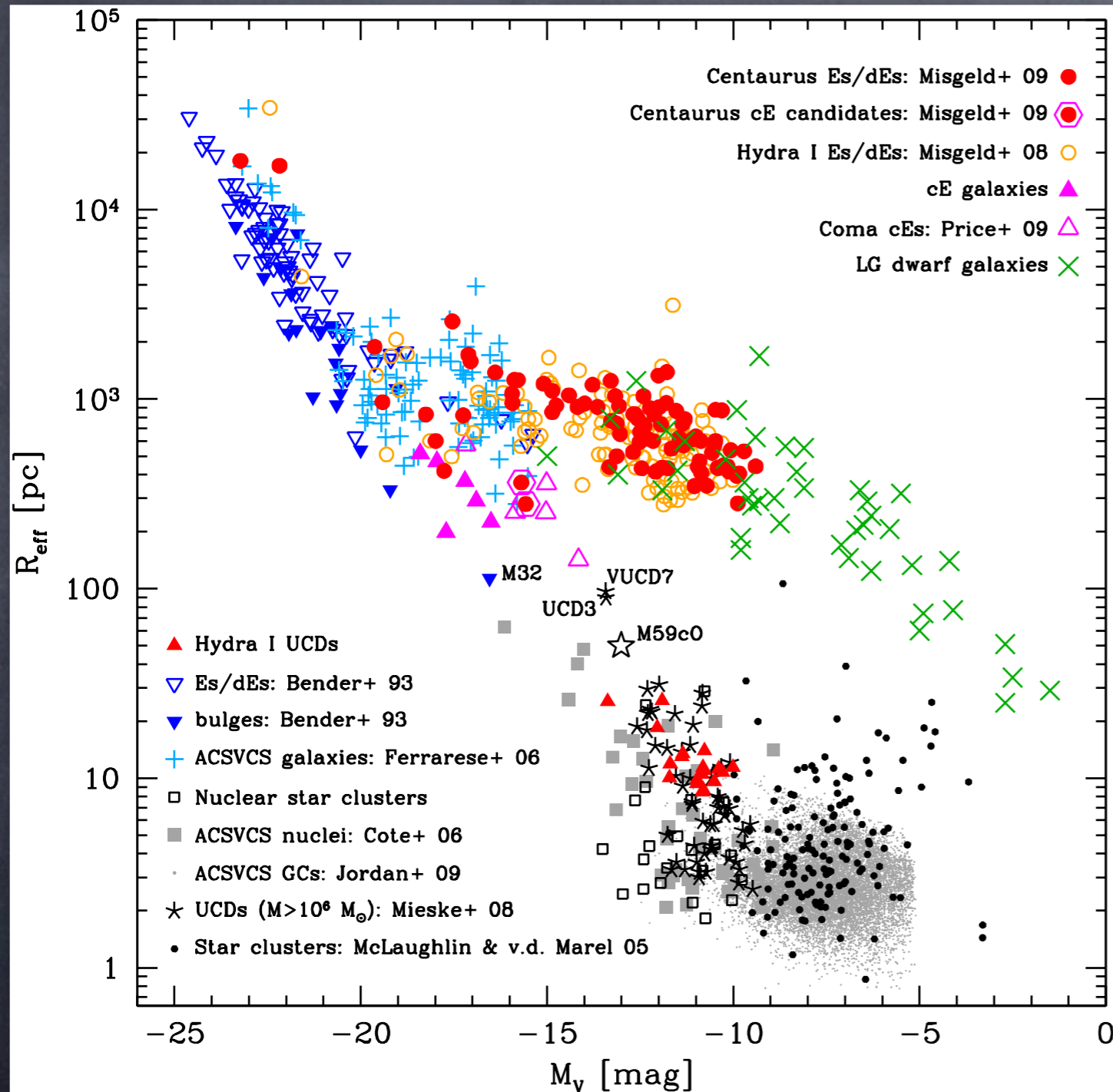


Families of interesting stellar systems...



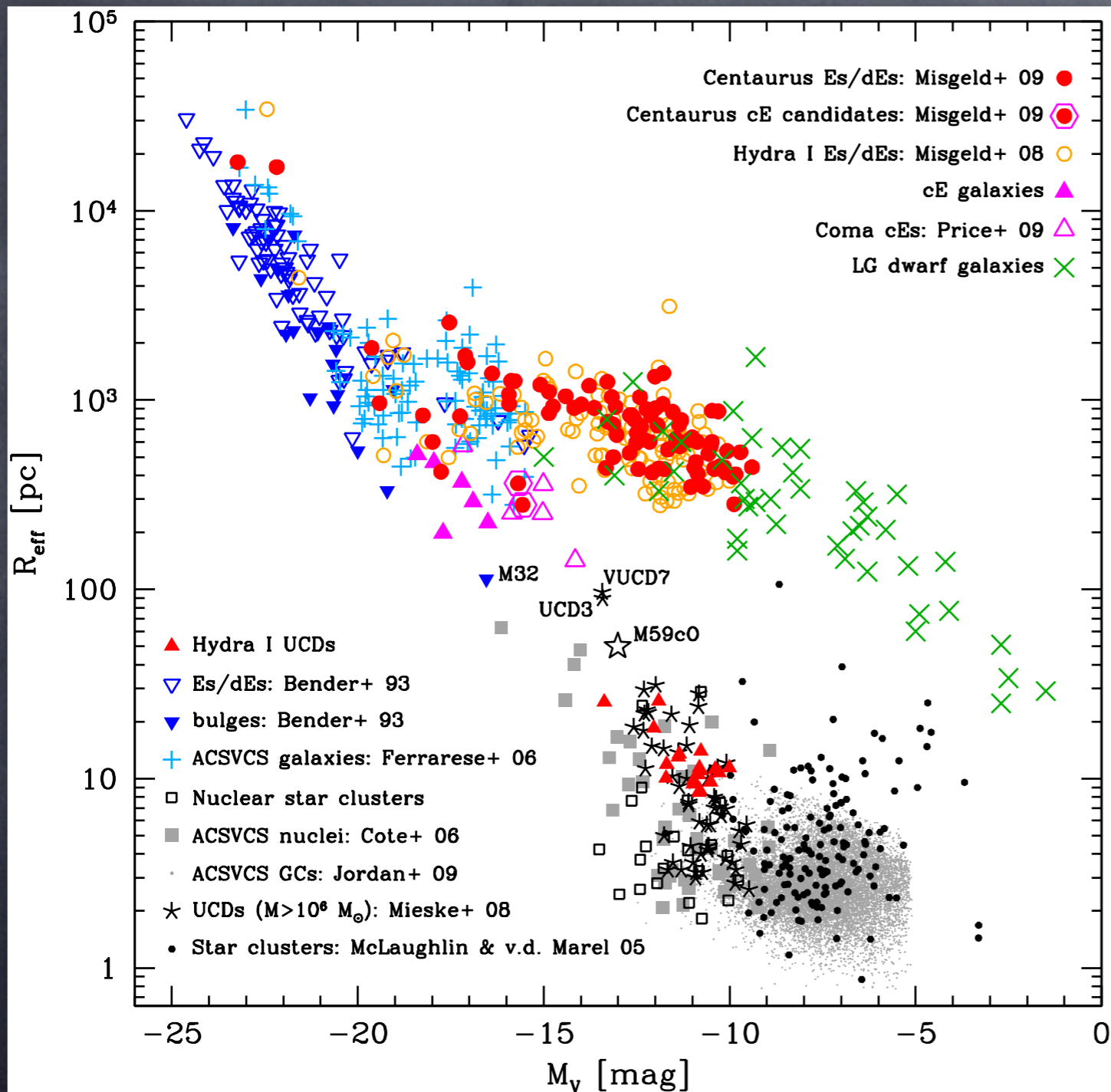
Misgeld & Hilker 2011, arXiv:1103.1628

Families of interesting stellar systems...



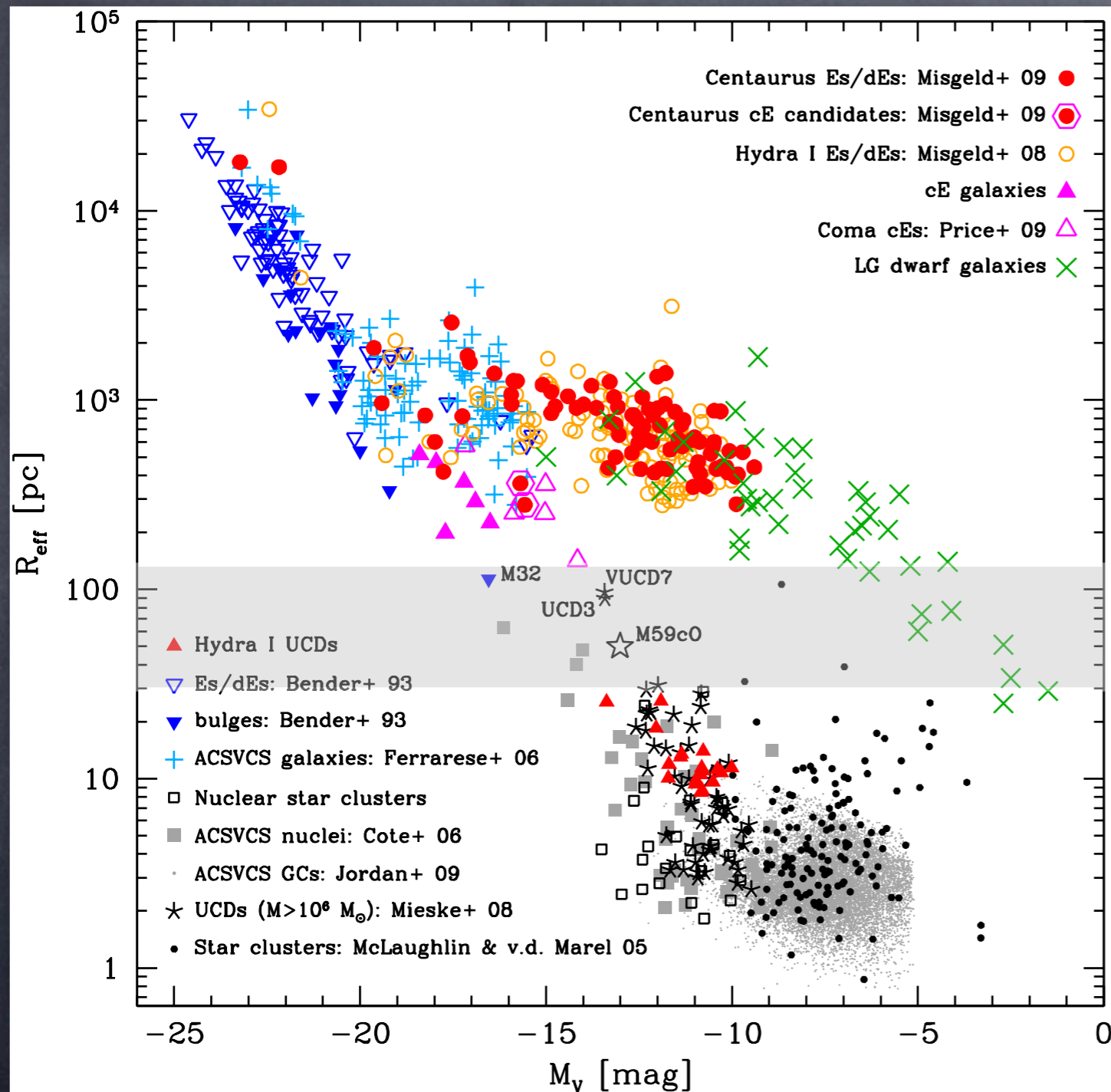
- two distinct families of objects:
- „galaxian“ family, comprising gEs, bulges, Es, cEs, dEs, dSph

Families of interesting stellar systems...



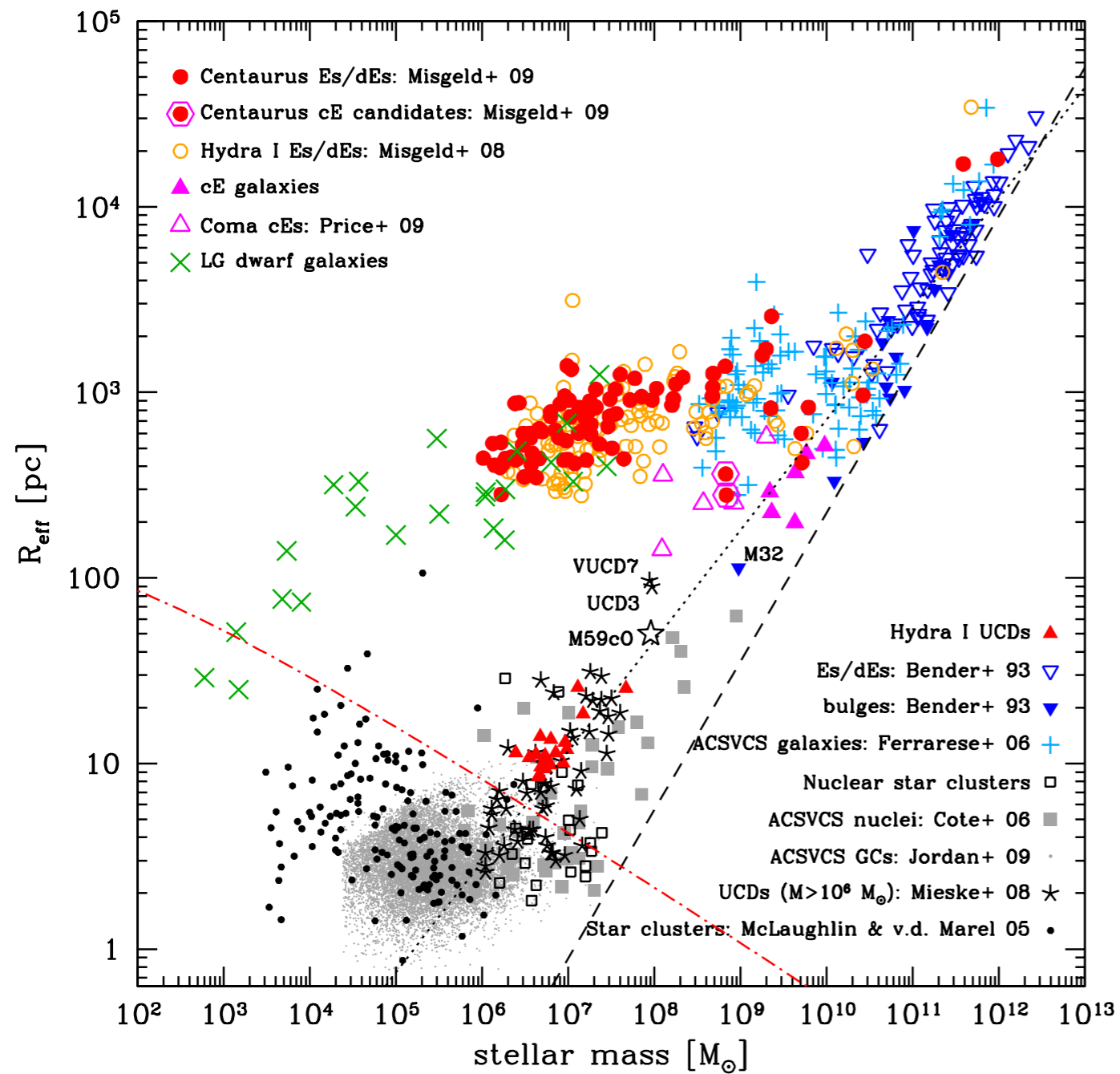
- two distinct families of objects:
- „galaxian“ family, comprising gEs, bulges, Es, cEs, dEs, dSph
- „star cluster“ family: GCs, UCDs, nuclear star clusters (NCs), nuclei of dE,Ns

Families of interesting stellar systems...

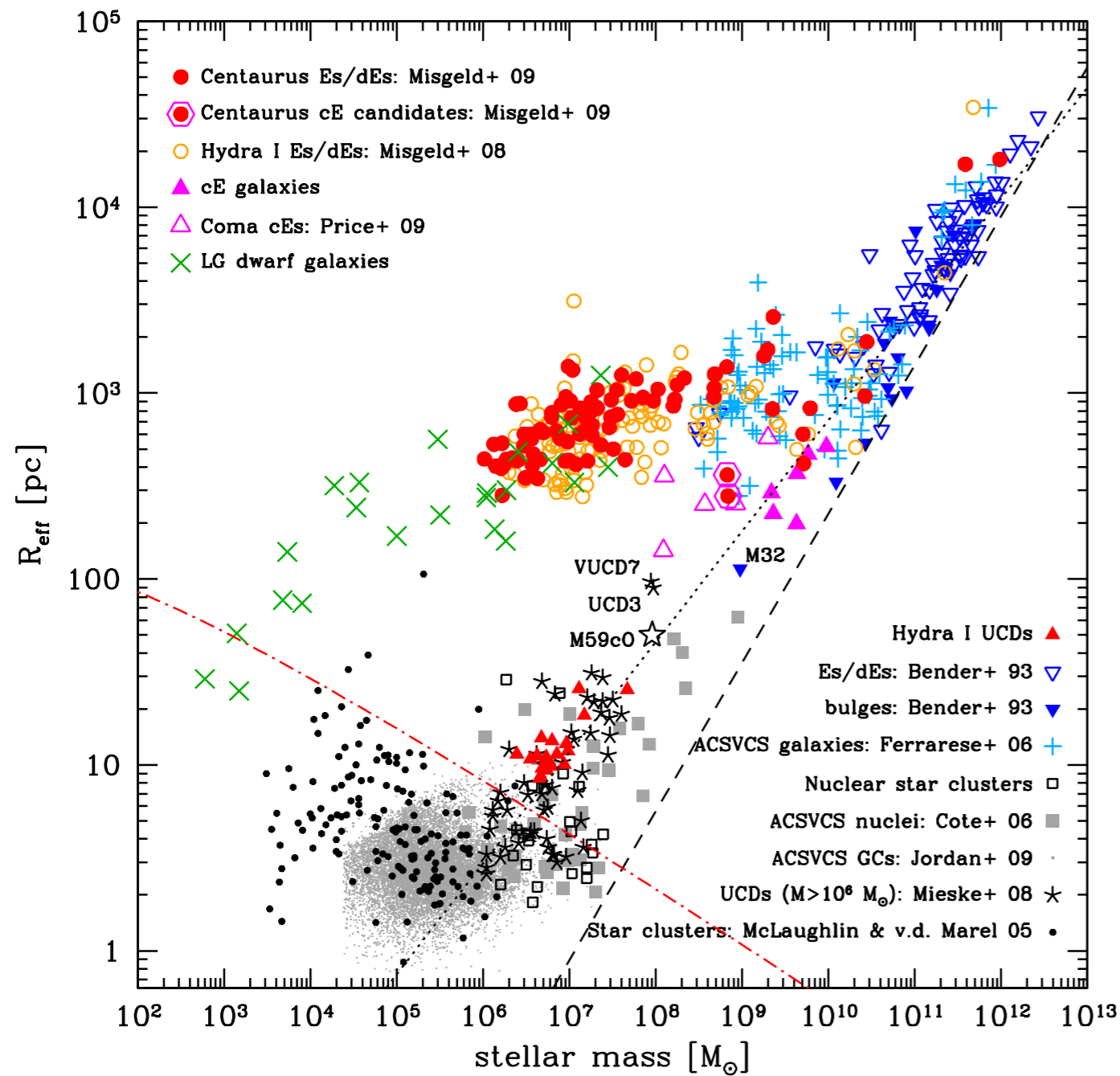


- two distinct families of objects:
- „galaxian“ family, comprising gEs, bulges, Es, cEs, dEs, dSph
- „star cluster“ family: GCs, UCDs, nuclear star clusters (NCs), nuclei of dE,Ns
- is there really a size gap between ~ 30 pc and ~ 120 pc?
(Gilmore et al. 2007)

...over 10 orders of magnitude in mass

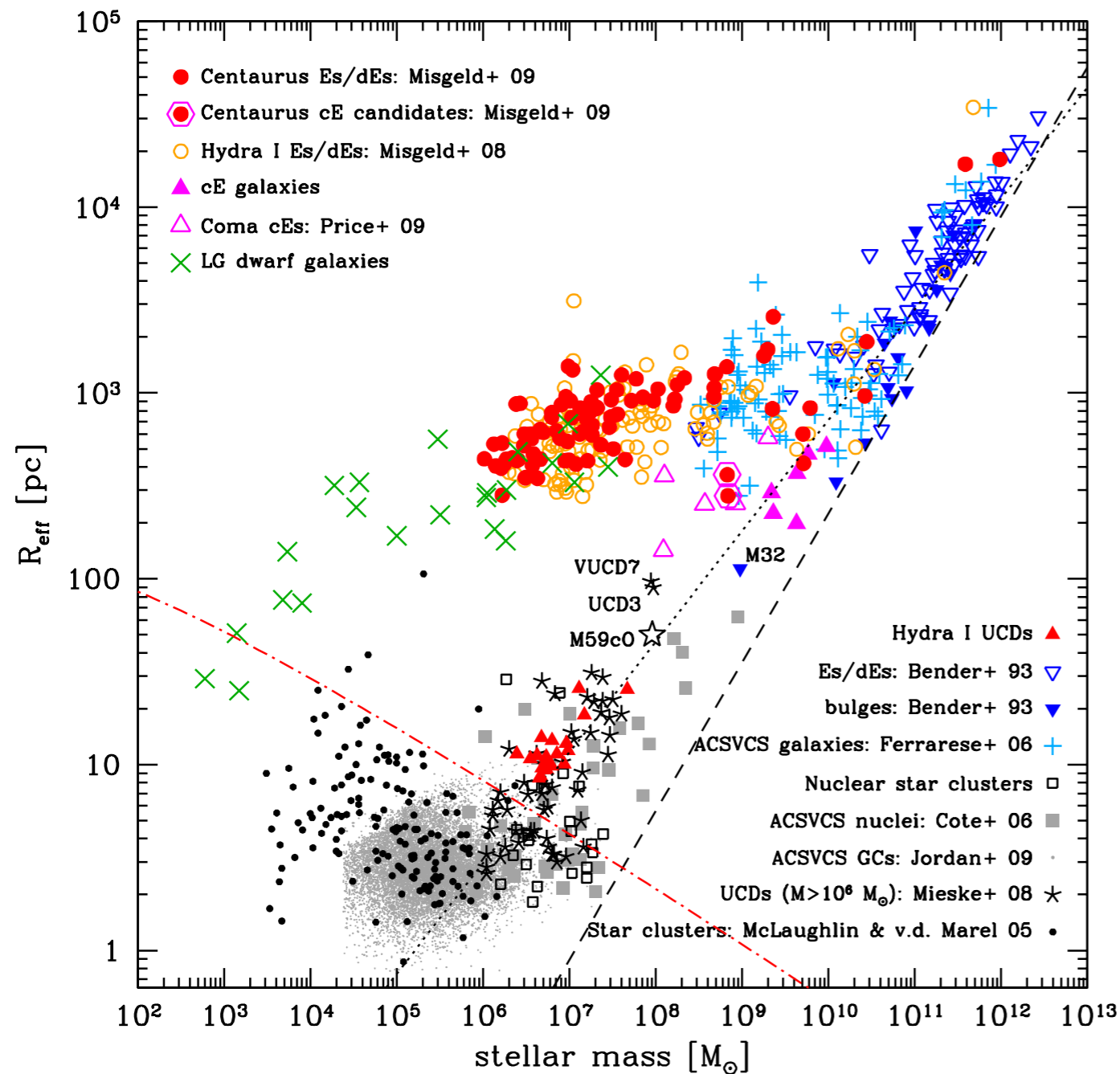


...over 10 orders of magnitude in mass



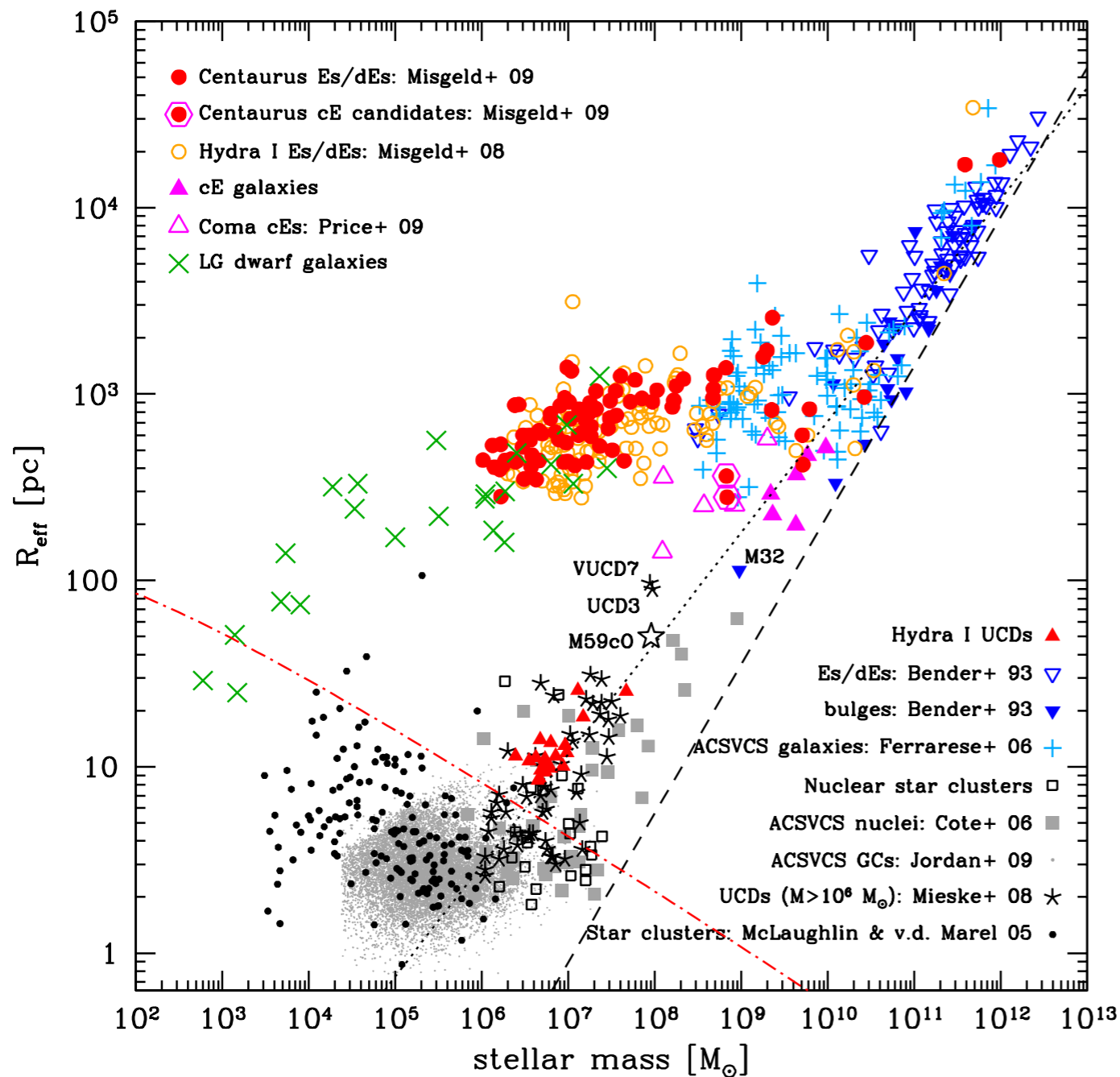
- clear size-mass relation in both the 'galaxian' and the 'star cluster' family

...over 10 orders of magnitude in mass



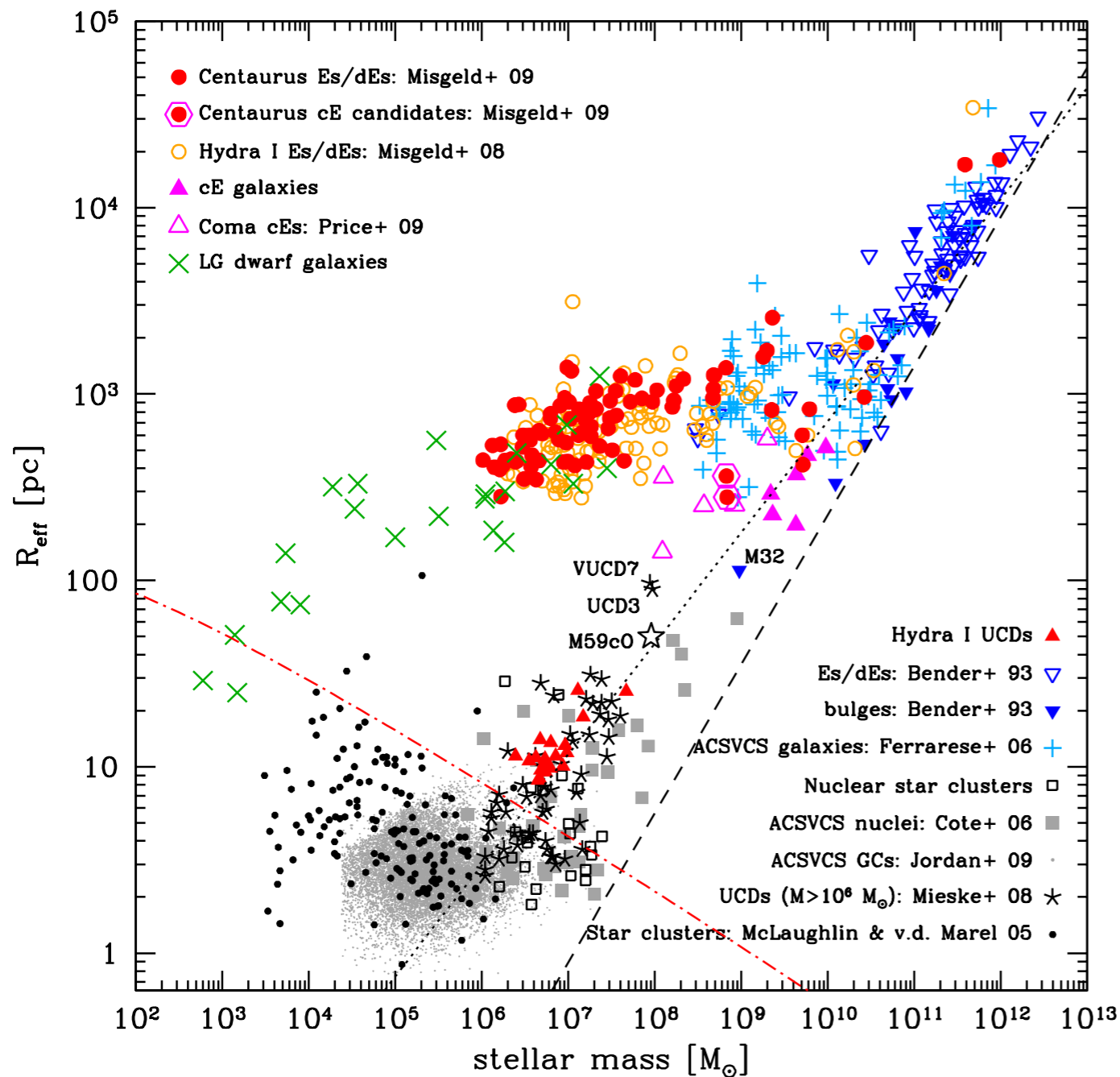
- clear size-mass relation in both the 'galaxian' and the 'star cluster' family
- similar for gEs/bulges and cEs, nuclei of dE,Ns, UCDs, NCs (see also [Dabringhausen et al. 2008](#))

...over 10 orders of magnitude in mass



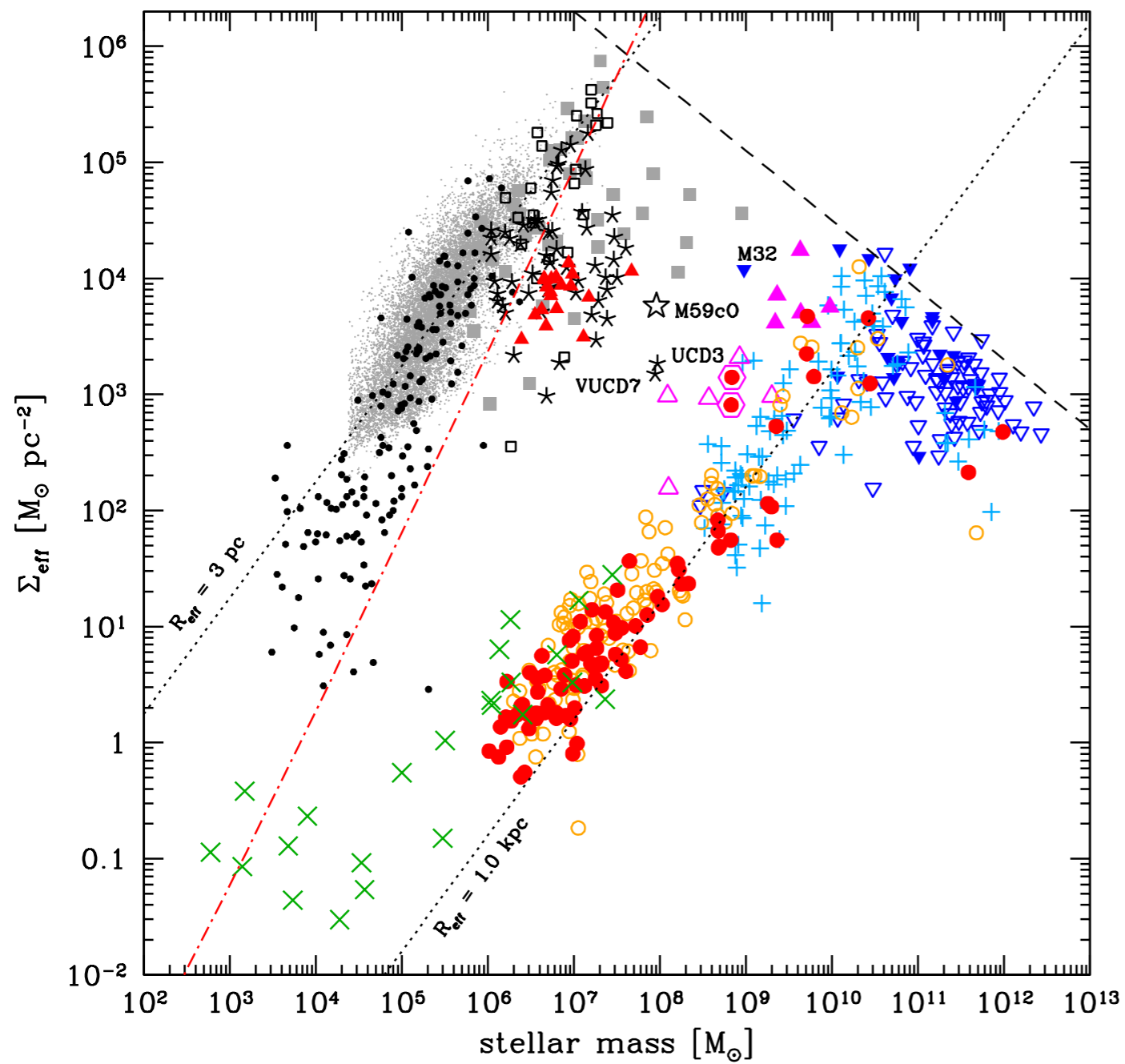
- clear size-mass relation in both the 'galaxian' and the 'star cluster' family
- similar for gEs/bulges and cEs, nuclei of dE,Ns, UCDs, NCs (see also [Dabringhausen et al. 2008](#))
- no object of either family beyond a limit of $R_{\text{eff}} = 2.24 \cdot 10^{-6} \cdot M_{\star}^{4/5}$ pc
- ---> 'zone of avoidance' (see also [Burstein et al. 1997](#))

...over 10 orders of magnitude in mass

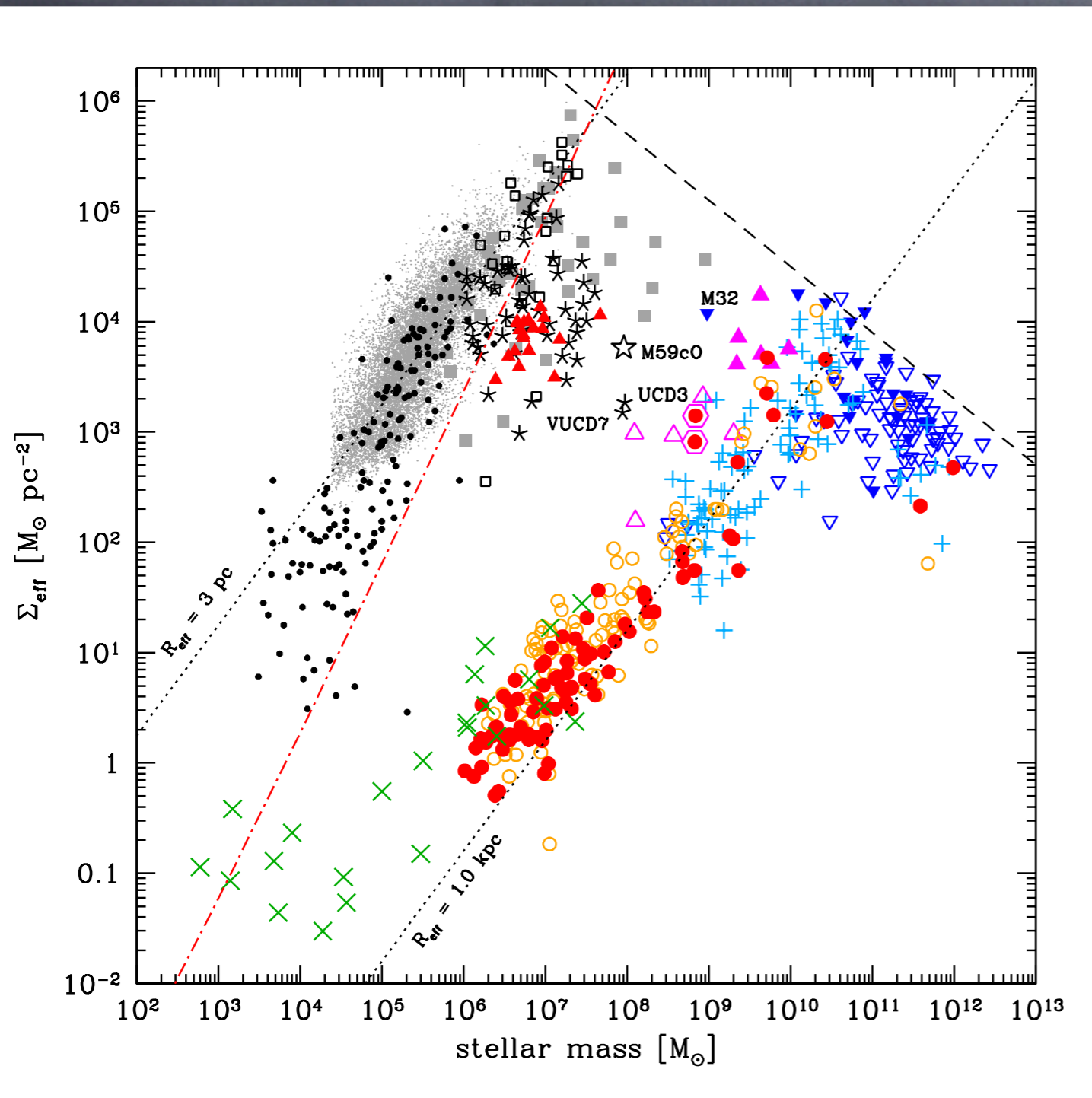


- clear size-mass relation in both the 'galaxian' and the 'star cluster' family
- similar for gEs/bulges and cEs, nuclei of dE,Ns, UCDs, NCs (see also [Dabringhausen et al. 2008](#))
- no object of either family beyond a limit of $R_{\text{eff}} = 2.24 \cdot 10^{-6} \cdot M_{\star}^{4/5}$ pc
- ---> 'zone of avoidance' (see also [Burstein et al. 1997](#))
- connection between UCDs and nuclei of dE,Ns? (---> talks by Michael Hilker and Mark Norris)

Galaxies and their star cluster mates

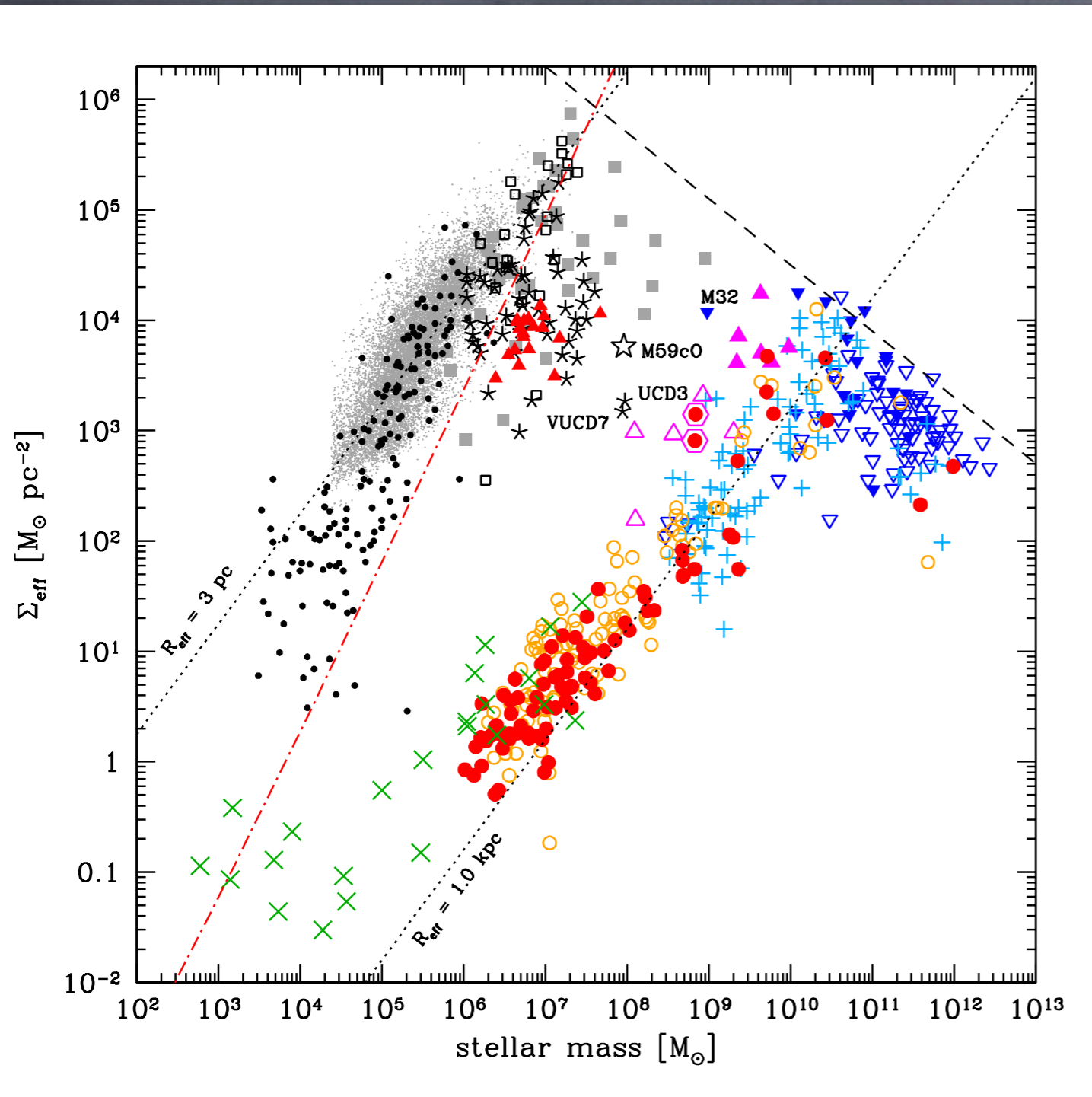


Galaxies and their star cluster mates



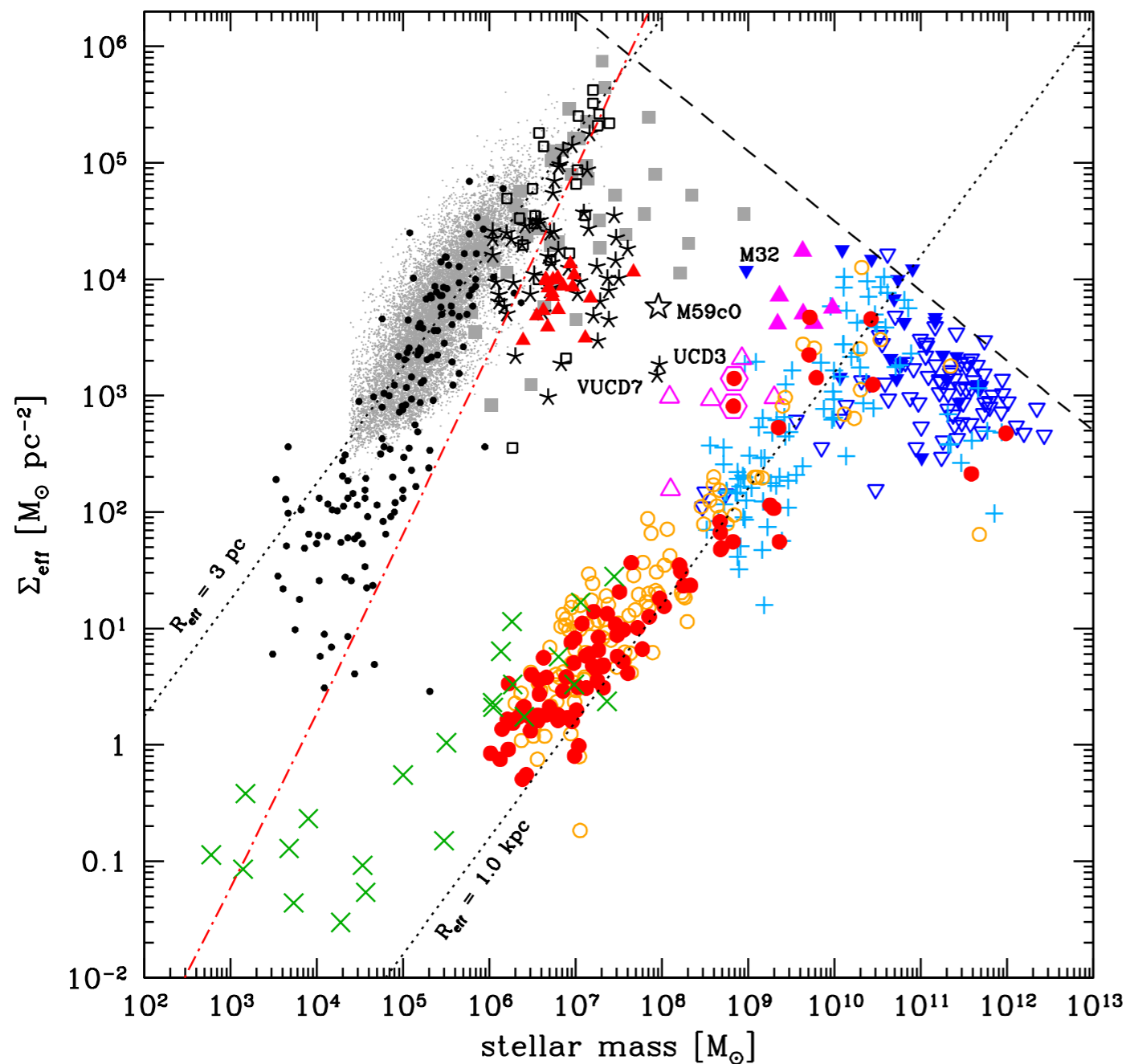
- both star cluster and galaxies show increasing mass surface density with increasing stellar mass

Galaxies and their star cluster mates



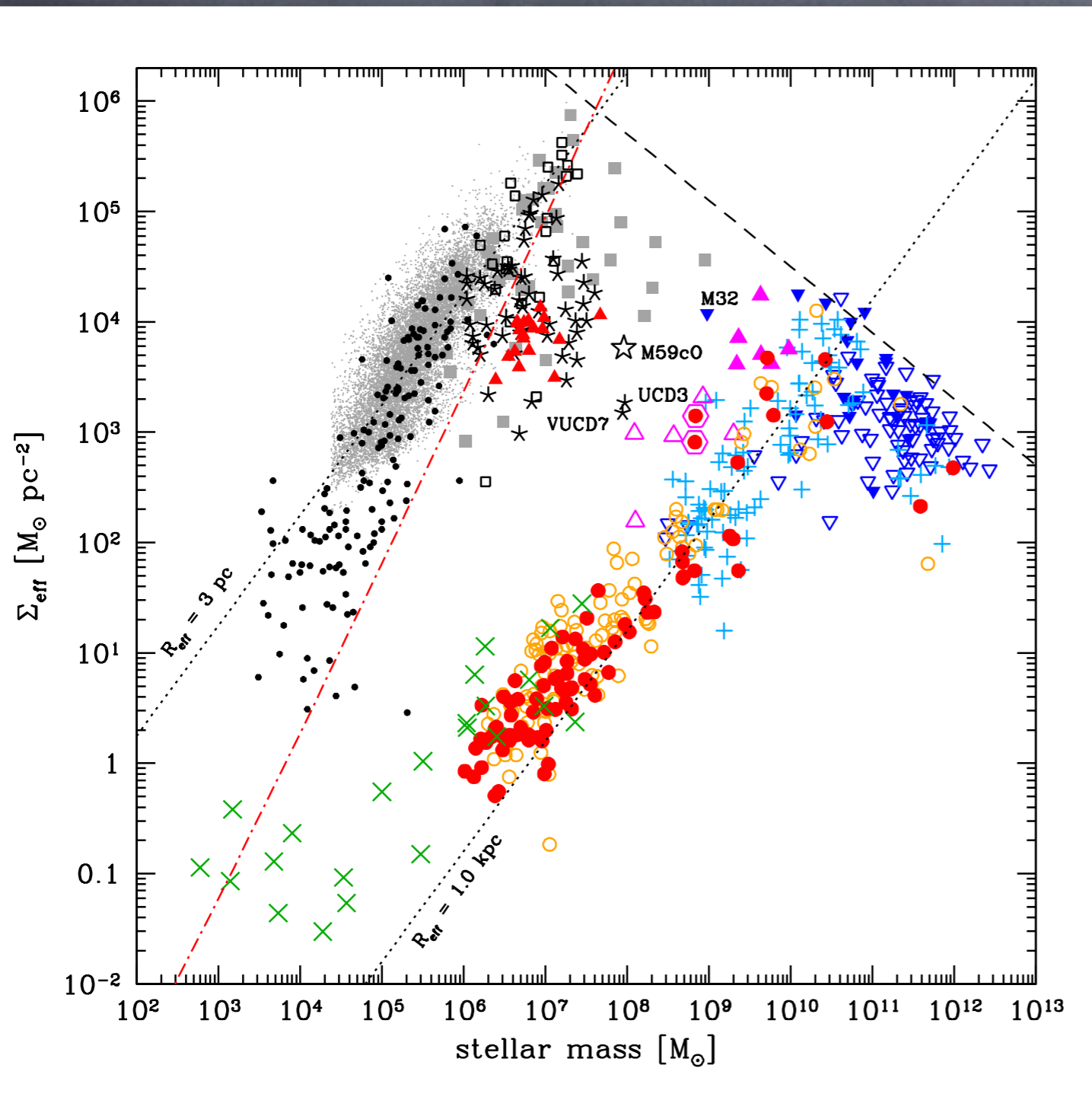
- both star cluster and galaxies show increasing mass surface density with increasing stellar mass
- sequences are almost identical, except for an offset of 10^3 in mass and 10^2 in surface density

Galaxies and their star cluster mates



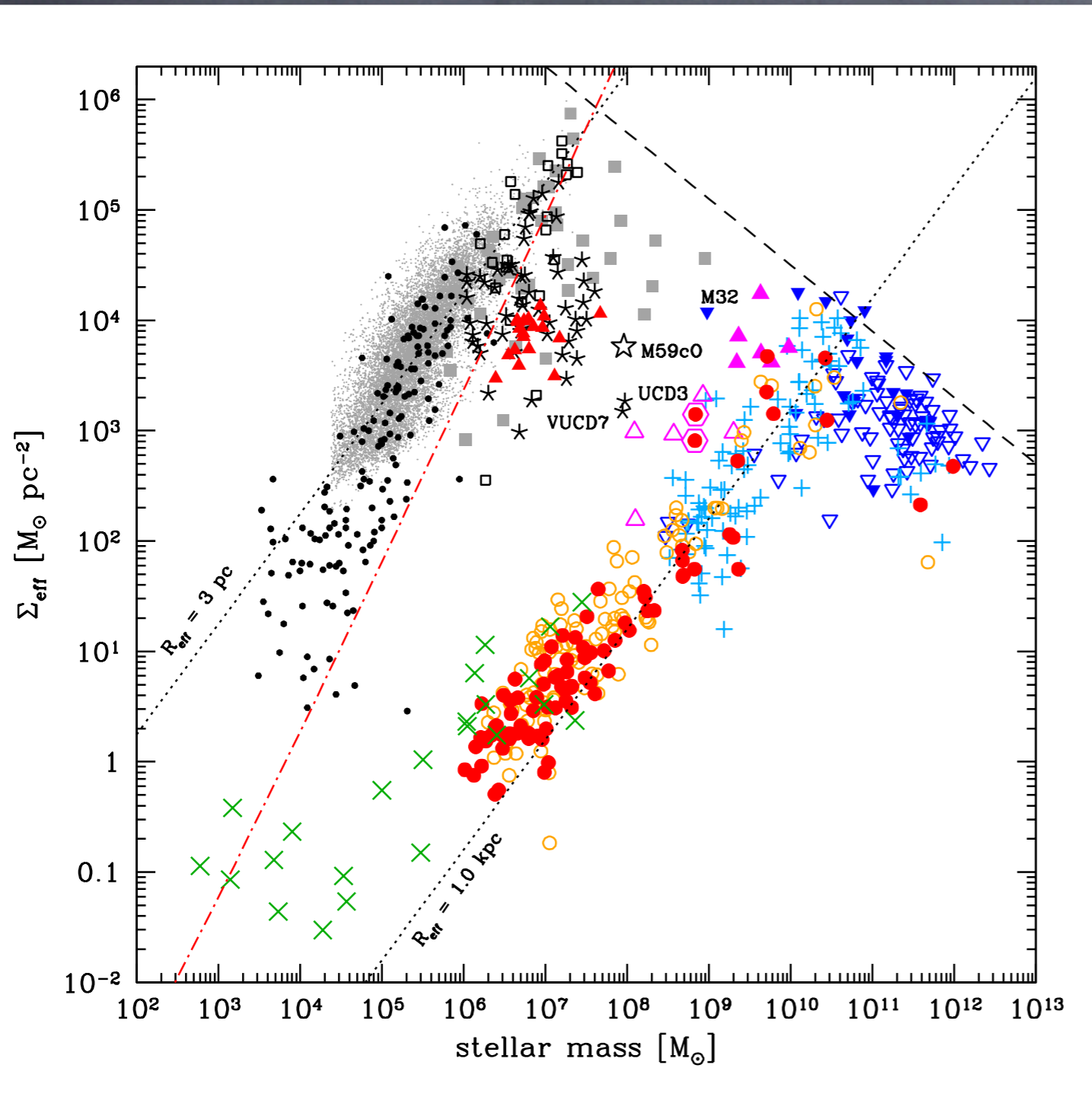
- both star cluster and galaxies show increasing mass surface density with increasing stellar mass
- sequences are almost identical, except for an offset of 10^3 in mass and 10^2 in surface density
- above a certain stellar mass, almost orthogonal sequence

Galaxies and their star cluster mates



- both star cluster and galaxies show increasing mass surface density with increasing stellar mass
- sequences are almost identical, except for an offset of 10^3 in mass and 10^2 in surface density
- above a certain stellar mass, almost orthogonal sequence
- the densest systems are nuclear star clusters and nuclei of dE,Ns

Galaxies and their star cluster mates



- both star cluster and galaxies show **increasing mass surface density with increasing stellar mass**
- sequences are almost identical**, except for an offset of 10^3 in mass and 10^2 in surface density
- above a certain stellar mass, almost **orthogonal sequence**
- the densest systems are nuclear star clusters and nuclei of dE,Ns
- maximum mass surface density:

$$\Sigma_{\text{eff}}(M) \leq 3.17 \cdot 10^{10} \cdot M_{\star}^{-3/5} \text{ M}_{\odot} \text{ pc}^{-2}$$

Summary

Summary

- UCDs now discovered in many different environments (not only galaxy clusters)

Summary

- UCDs now discovered in many different environments (not only galaxy clusters)
- photometric AND kinematical properties are needed to investigate possible formation scenarios

Summary

- UCDs now discovered in many different environments (not only galaxy clusters)
- photometric AND kinematical properties are needed to investigate possible formation scenarios
- how important are environmental effects?

Summary

- UCDs now discovered in many different environments (not only galaxy clusters)
- photometric AND kinematical properties are needed to investigate possible formation scenarios
- how important are environmental effects?
- with large samples of star clusters and galaxies, fundamental scaling relations now traceable over many orders of magnitude