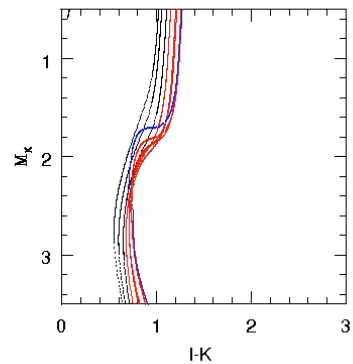
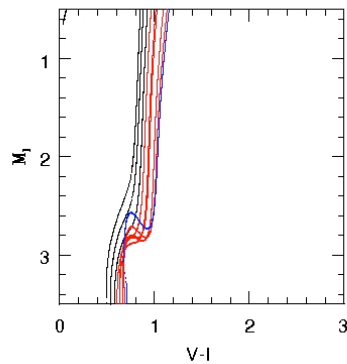
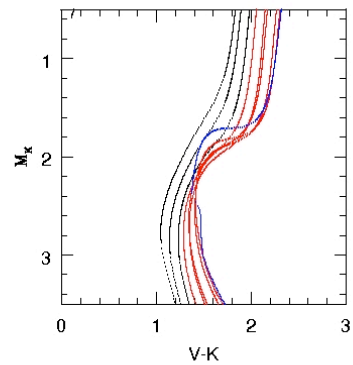
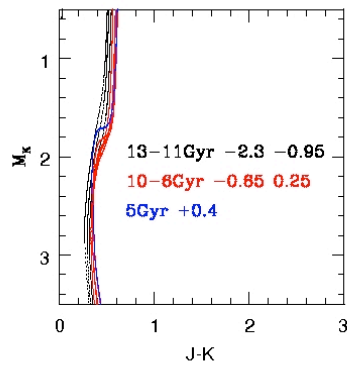
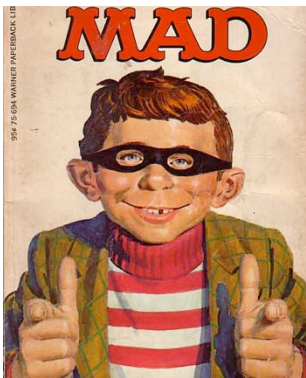
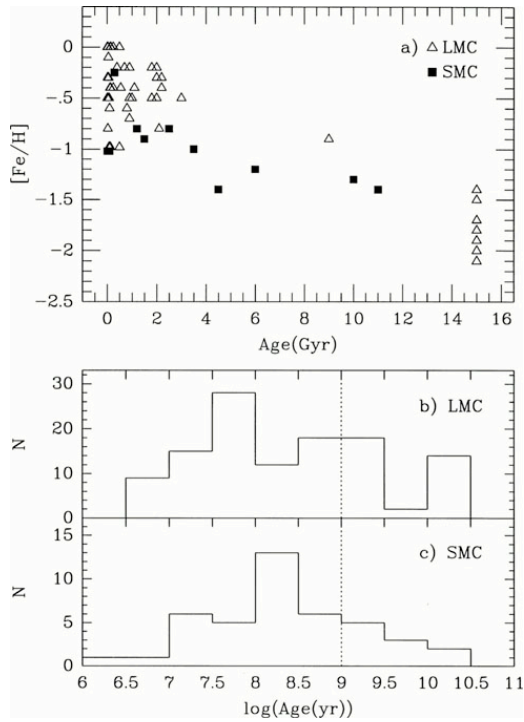


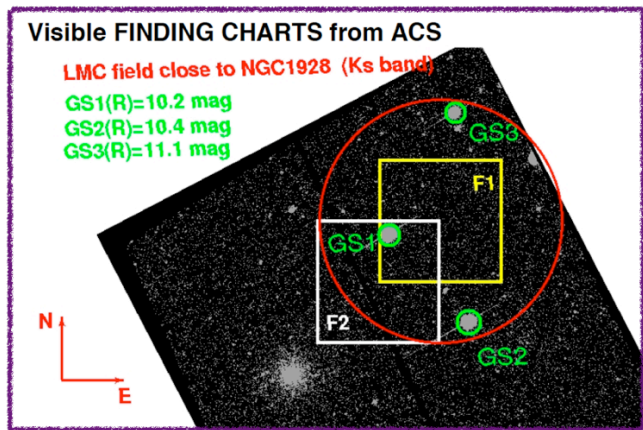
Colour-Magnitude Diagrams



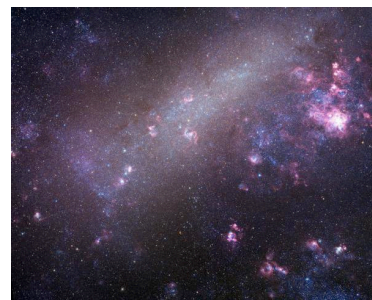
Magellanic Cloud Star Clusters



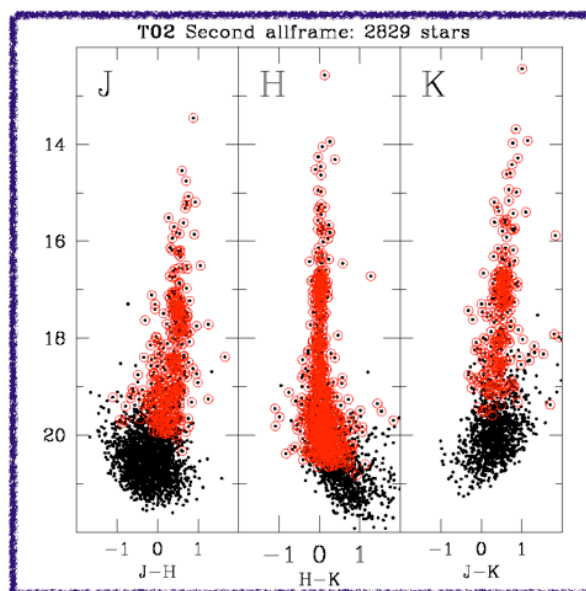
Olszewski, Suntzeff & Mateo 1996



G. Fiorentino



LMC CMD with MAD



J~20 (42min), H~20.5 (42min) and K~19.5 (60min)
with $\sigma \leq 0.05$ mag

from G. Fiorentino



- Better sky coverage (more, fainter GS)
- More stable performance (K=21-22mag)
- I band?

