

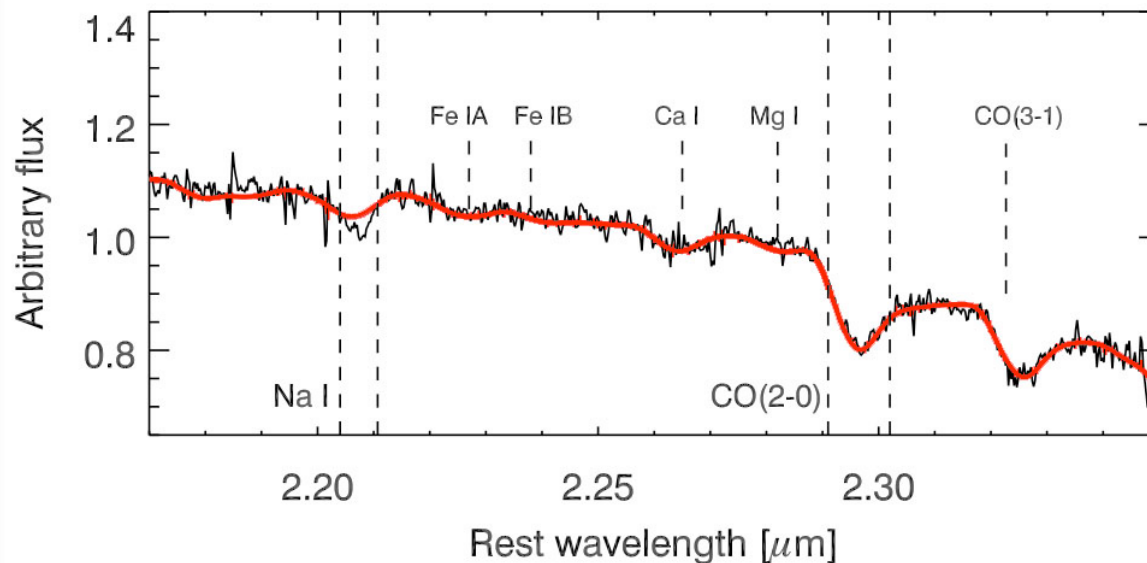
Central K-band Kinematics and Line Strength Maps of NGC1399



Mariya Lyubenova
ESO

Observations

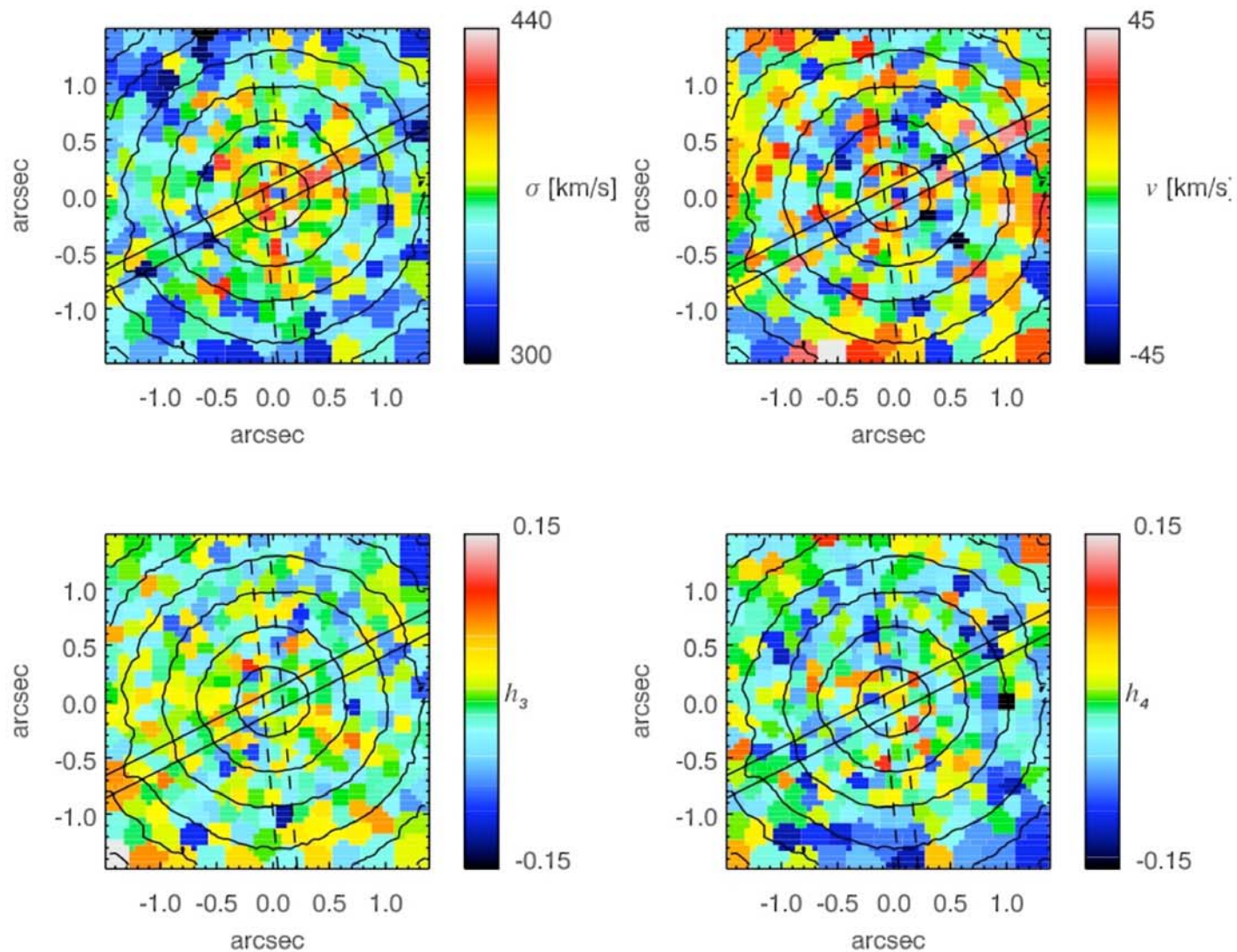
- 9600s SINFONI K-band integration, 3"x3" FoV
- 0.1" spatial sampling, effective spatial resolution (FWHM) $\sim 0.15''$
- Voronoi adaptive binning $\Rightarrow S/N \approx 100$
- pPXF accuracy in v , $\sigma \pm 17$ km/s, h_3 , $h_4 \pm 0.04$



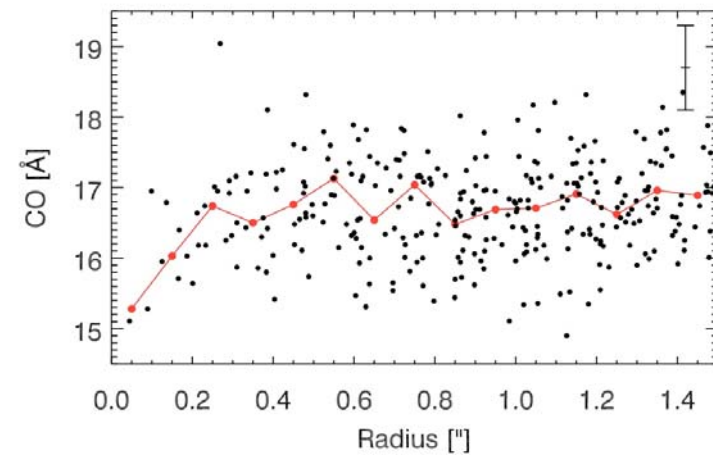
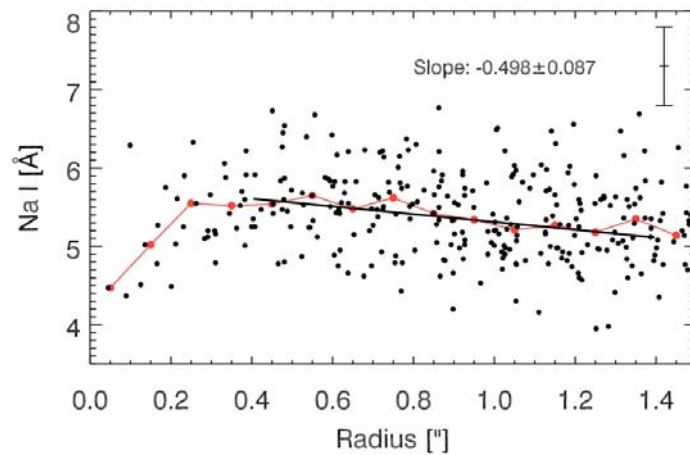
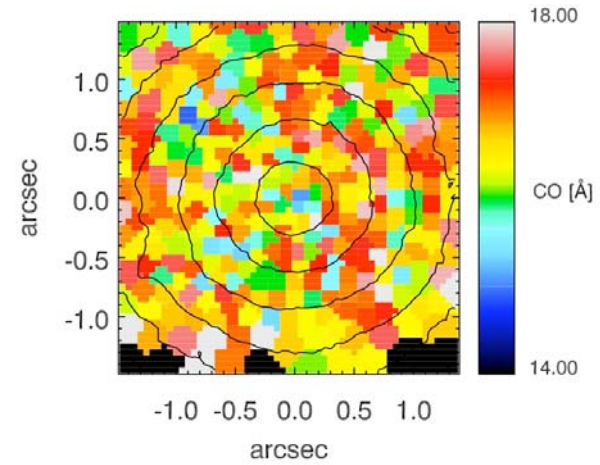
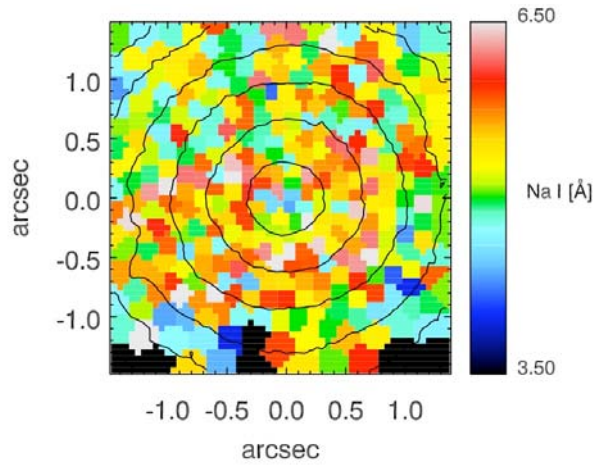
-- central spectrum

-- best fit velocity
template

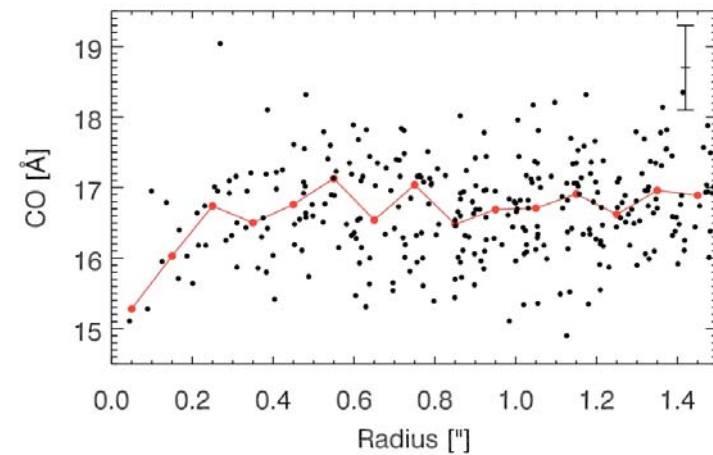
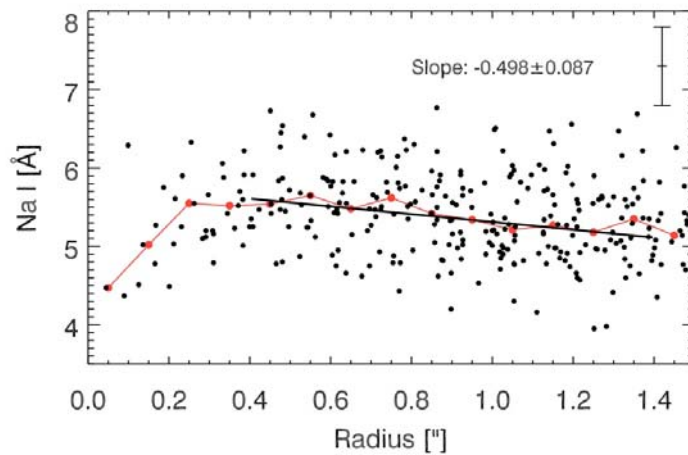
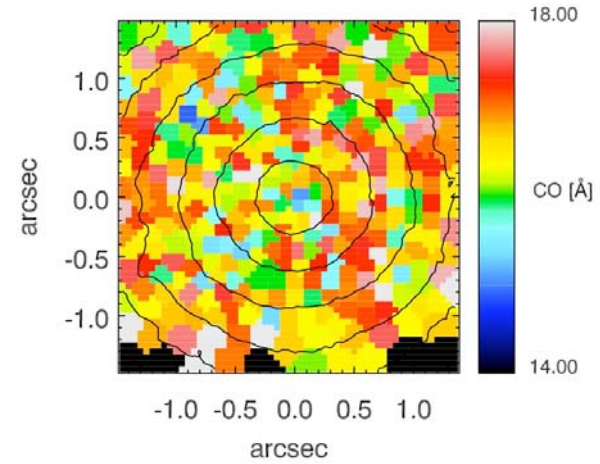
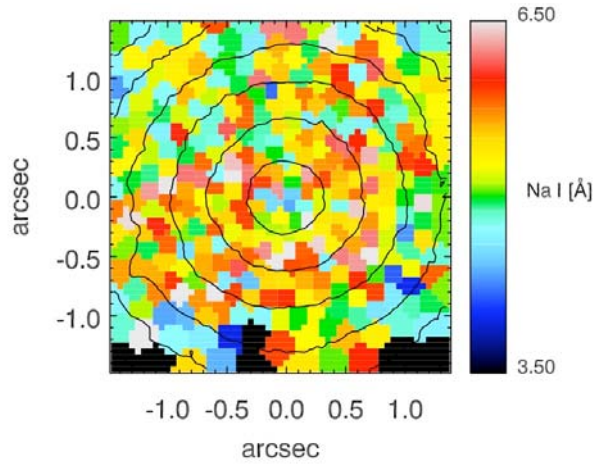
Kinematics Maps



Line Strength Maps



Line Strength Maps



Lyubenova et al.'08, A&A in press, astro-ph 0803.3806