

The nature of **radio-quiet** Lya blobs

Yuichi MATSUDA
(Kyoto University)

Outline

- 1. Subaru search for radio-quiet Ly α blobs in and around the SSA22 proto-cluster at $z=3.1$**
- 2. High resolution submm observations of a submm bright, radio-quiet Ly α blob**

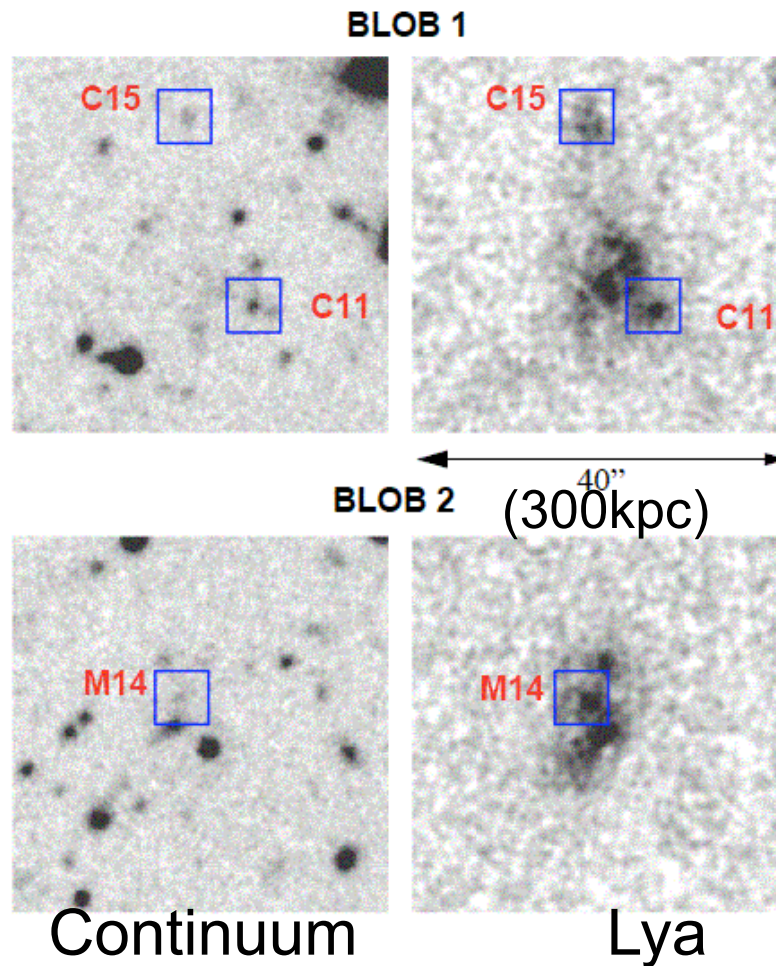
Radio-quiet Ly α blobs

(e.g. Keel et al. 1999, Steidel et al. 2000, Francis et al. 2001, Palunas et al. 2004, Matsuda et al. 2004, Dey et al. 2005, Nilsson et al. 2006, Smith & Jarvis 2007, Bunker's talk, Dijkstra's talk)

Similar extended Ly α halos are often seen around high-z radio galaxies (e.g. McCarthy et al. 1987, van Ojik et al. 1997, Villar-Martin's talk, Humphrey's talks)

Relation between radio-quiet Ly α blobs and Ly α halos around high-z radio galaxies is unclear!!

Steidel et al. (2000)



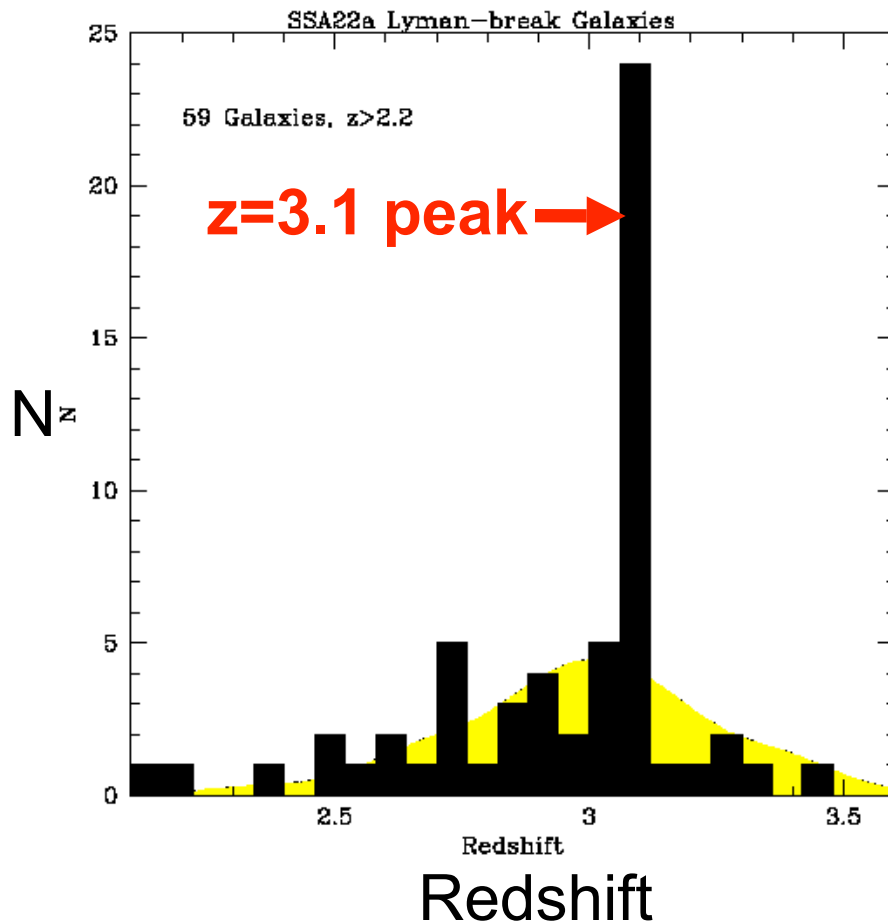
1. Subaru search for radio-quiet Ly α blobs in and around the SSA22 proto-cluster at $z=3.1$



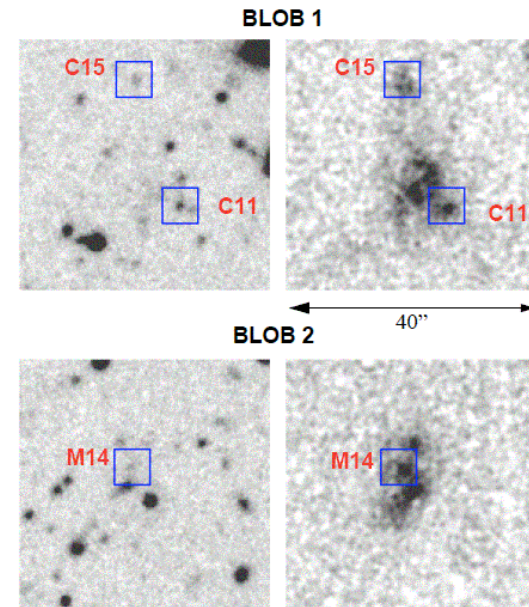
The SSA22 proto-cluster at $z=3.1$

(Steidel et al. 1998, 2000)

Redshift distribution of Lyman-break galaxies



2 giant radio-quiet Ly α blobs



Are there other Ly α blobs in and around the proto-cluster?



**Subaru/Suprime-Cam Ly α image
of the SSA22 proto-cluster at $z=3.1$
(0.2 square degrees)**

The previous Ly α Image
(Steidel et al. 2000)

**Our Ly α image is 10 x wider & 0.5 mag
deeper than the previous Ly α image**

33 (+2) radio-quiet Ly α blobs

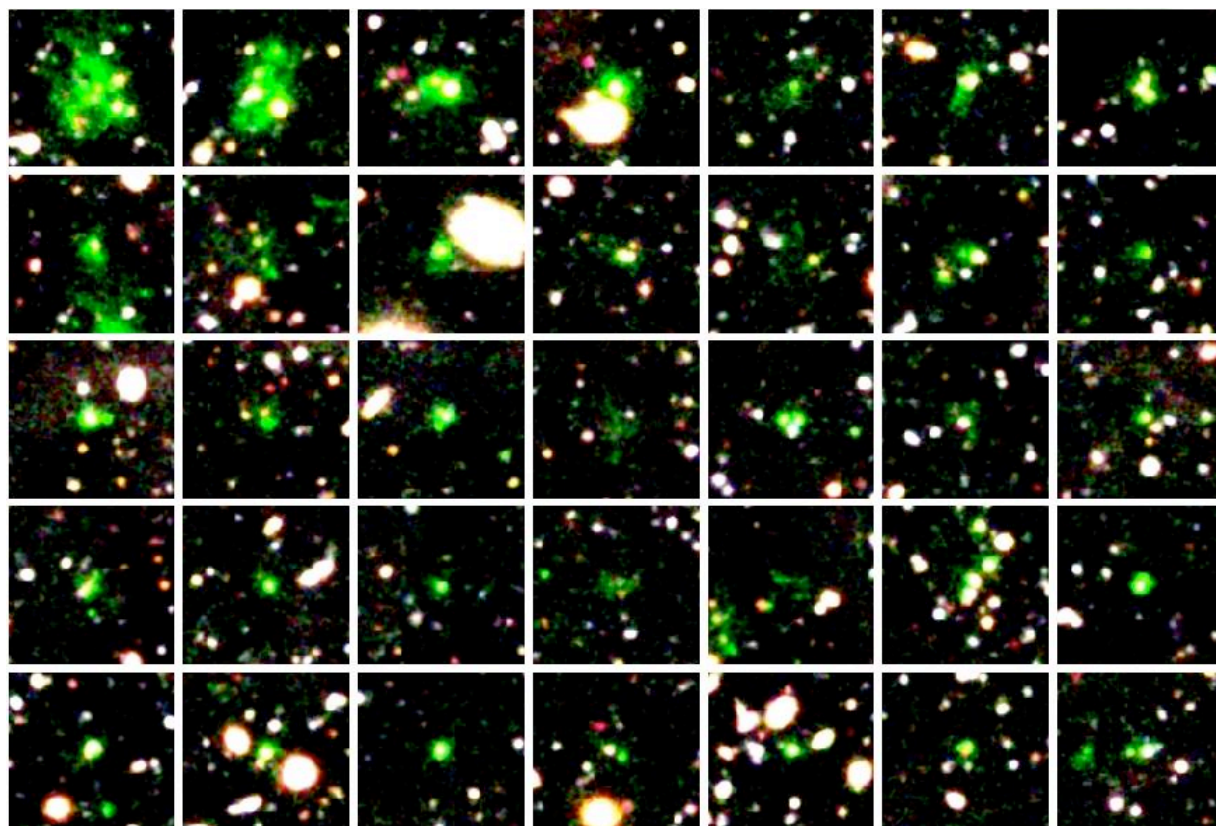
(Matsuda et al. 2004)

The first large sample of radio-quiet Lyman alpha blobs

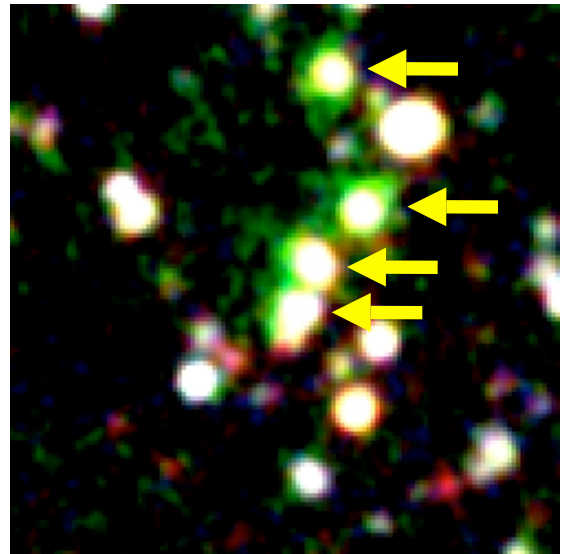
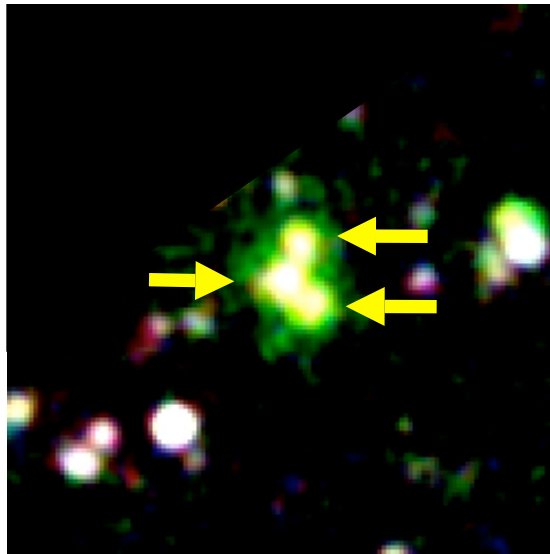
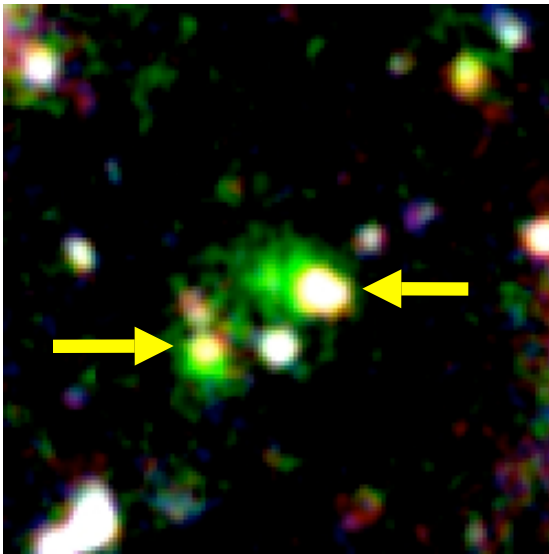
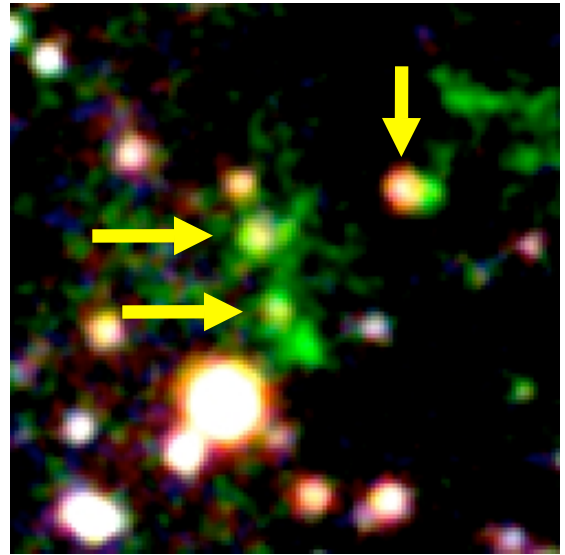
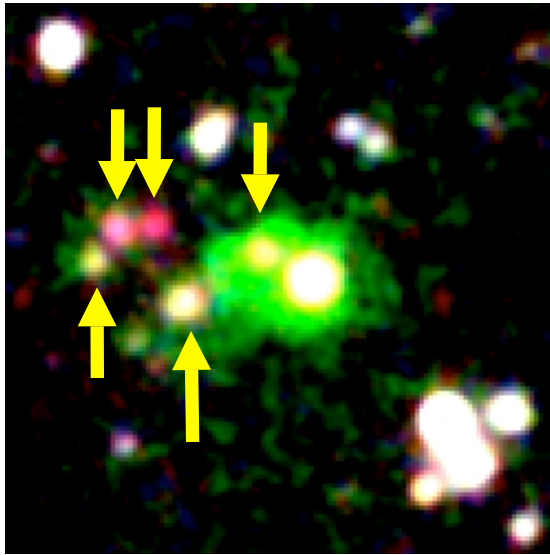
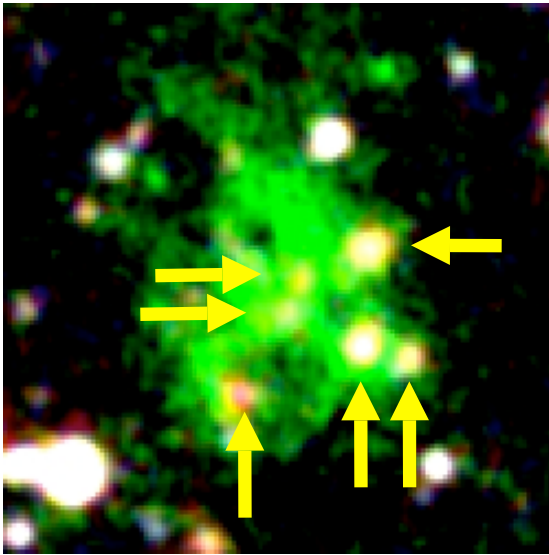
Selection criteria: Ly α luminosity $> 6 \times 10^{42}$ ergs/s
Ly α equivalent width $> 80\text{\AA}$, Ly α size > 30 kpc

25''

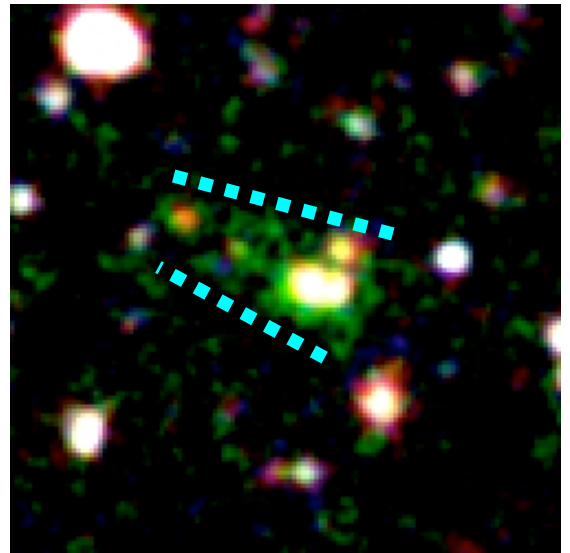
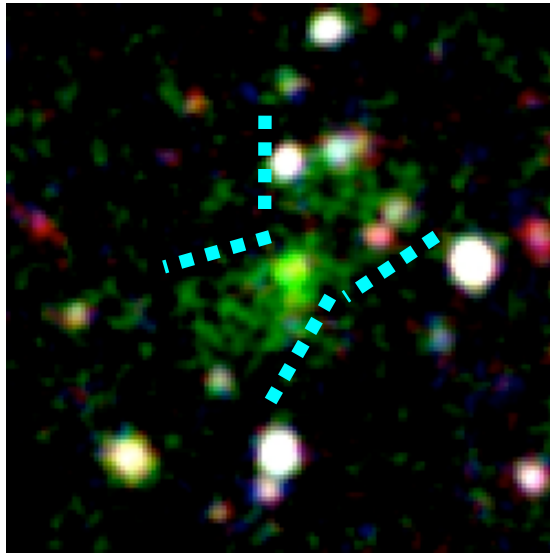
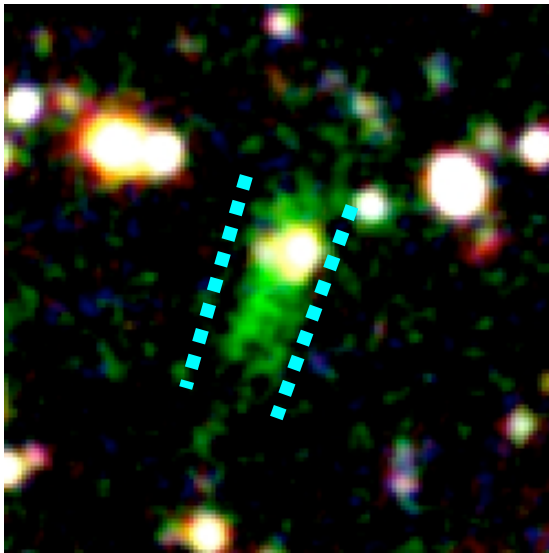
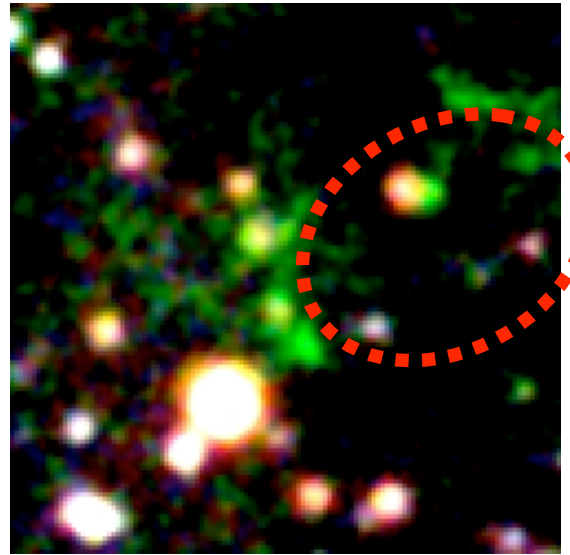
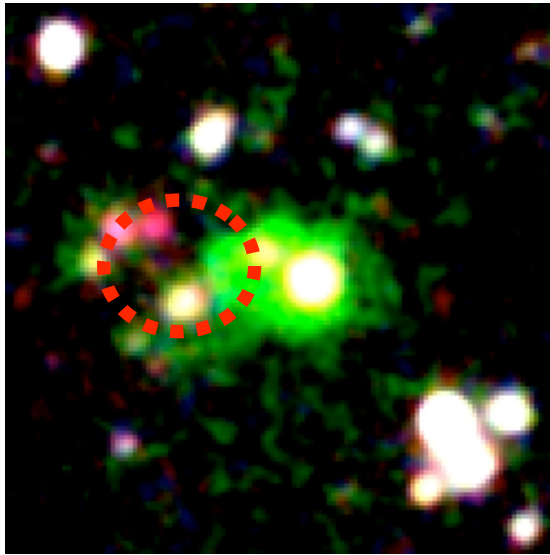
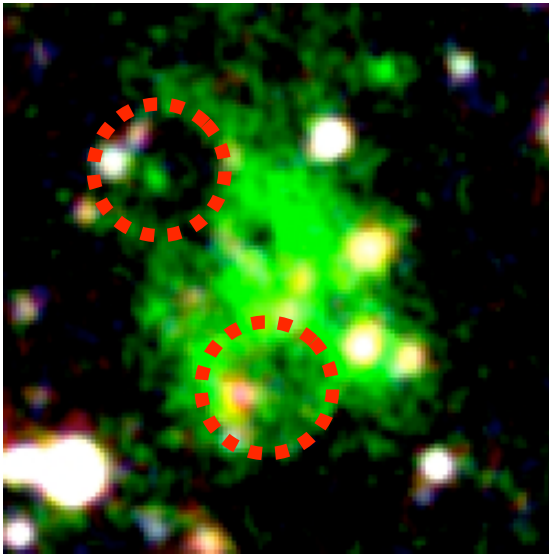
All the objects
are radio-quiet
 $f(1.4\text{GHz}) < 1\text{mJy}$



Multiple UV continuum sources?



Bubble-like / conical structures?



Sky map of radio-quiet Ly α blobs

(Matsuda et al. 2004)

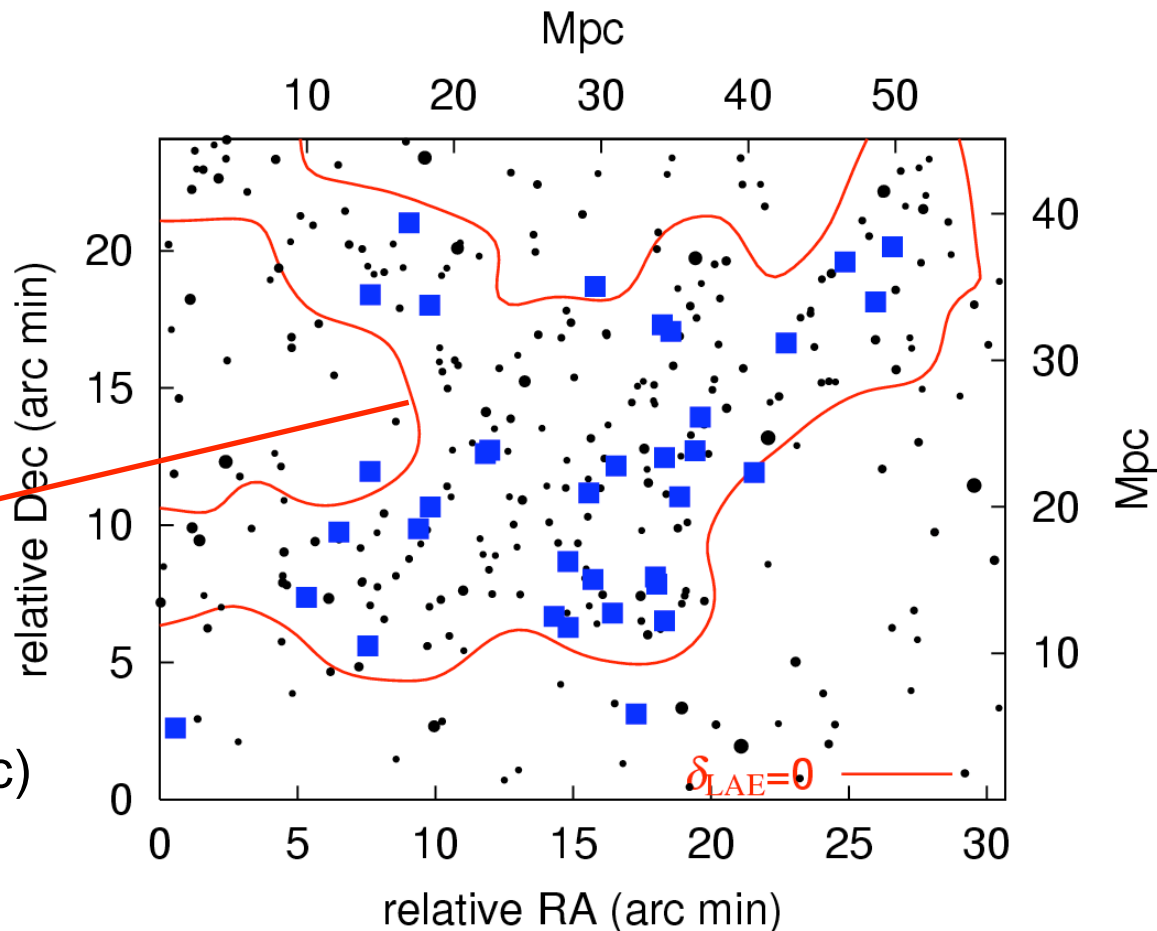
~90% of the blobs are located in the overdense region

→ **Radio-quiet Ly α blobs are characteristic phenomena in overdense environments!!**

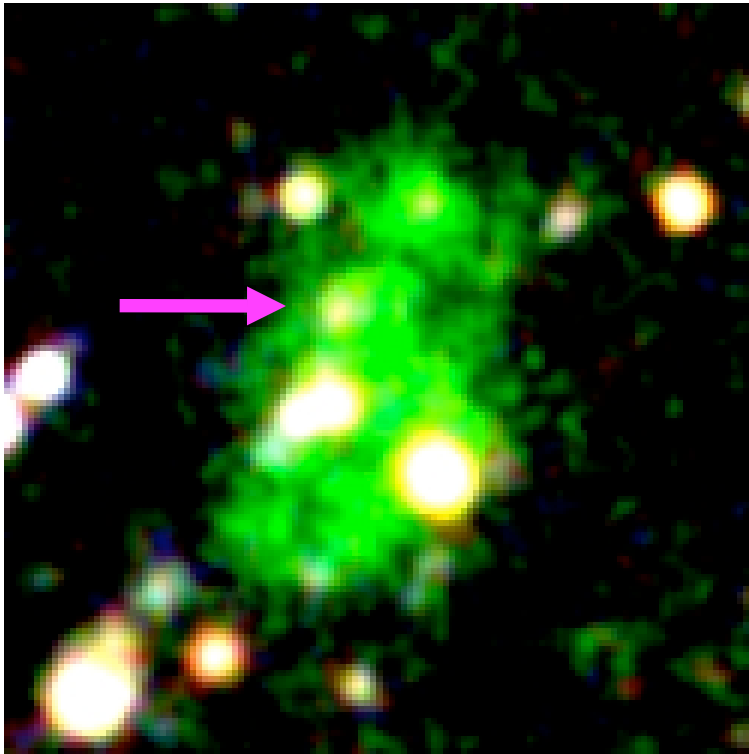
- radio-quiet Ly α blobs
- compact star-forming (Ly α emitting) galaxies

overdense region
of compact star-
forming galaxies

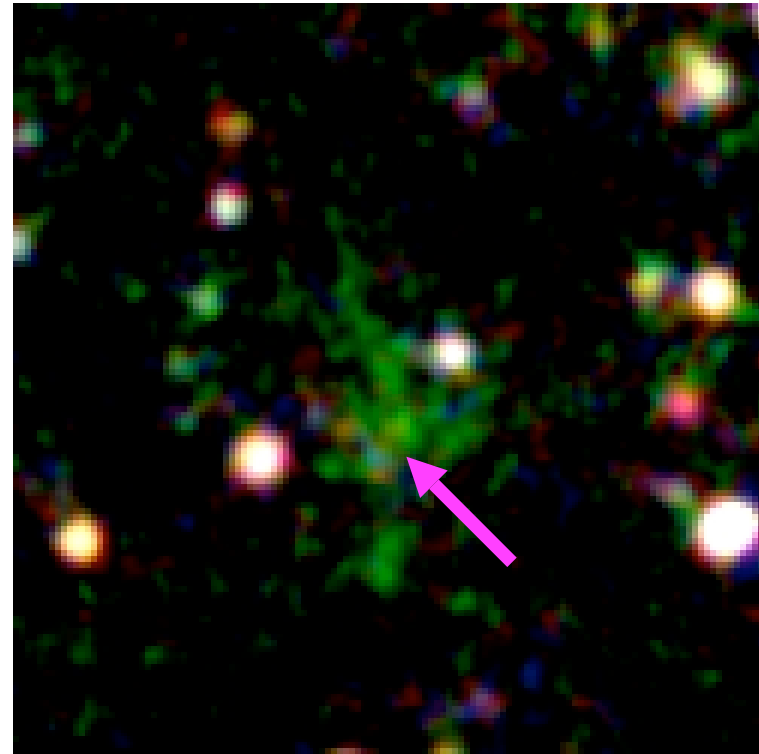
redshift range
 $z=3.05-3.12$ (width~60Mpc)



X-ray detected Ly α blobs (2/35)

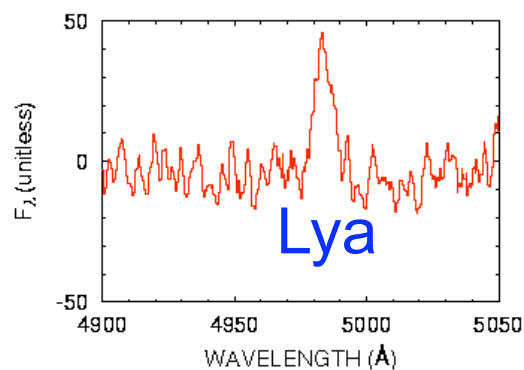
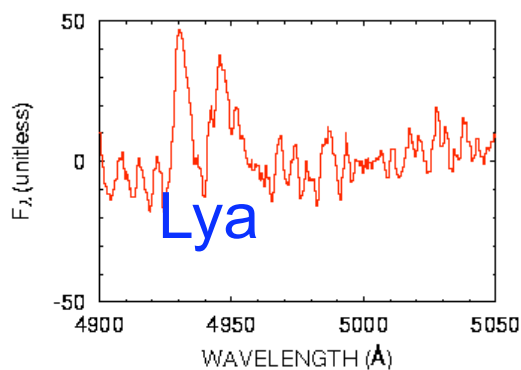
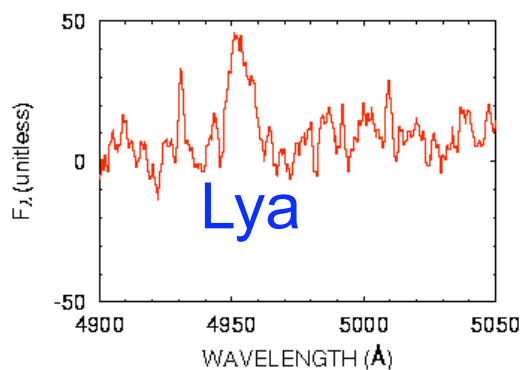
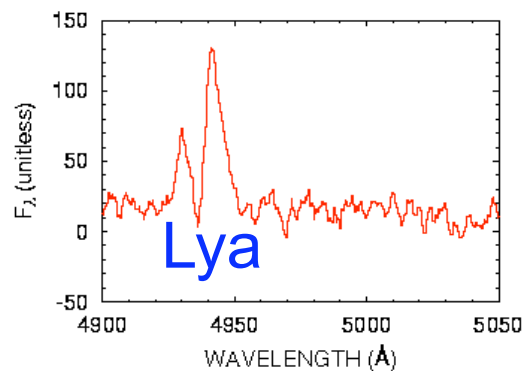
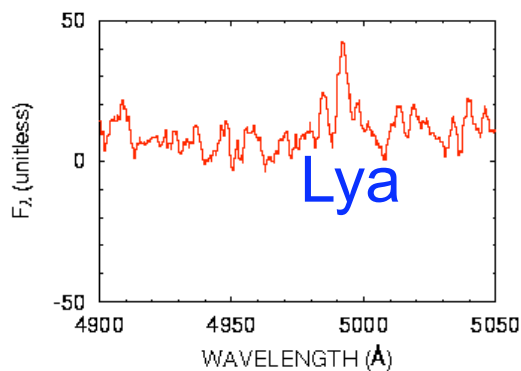
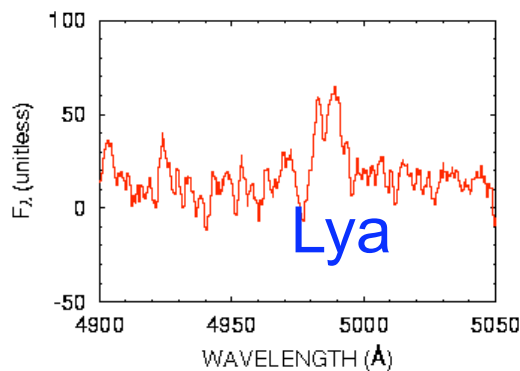
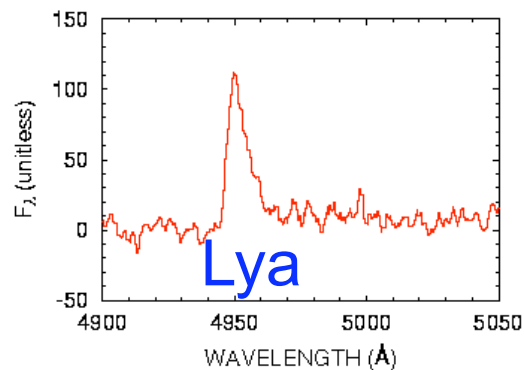
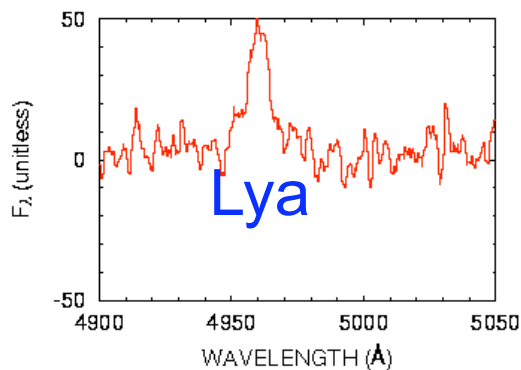
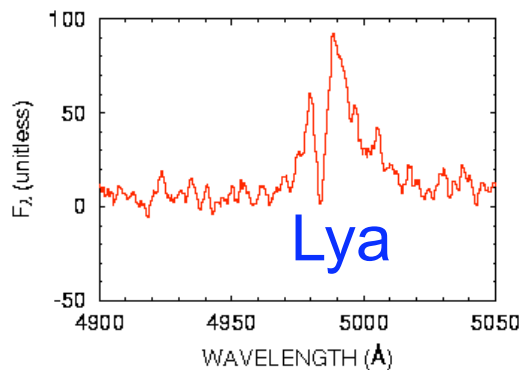


Detected in 78 ks Chandra data
0.3-8 keV flux $\sim 3 \times 10^{-15}$ ergs/s/cm²
Unabsorbed X-ray luminosity
 $\sim 10^{44}$ ergs/s
(Basu-Zych & Scharf 2004)

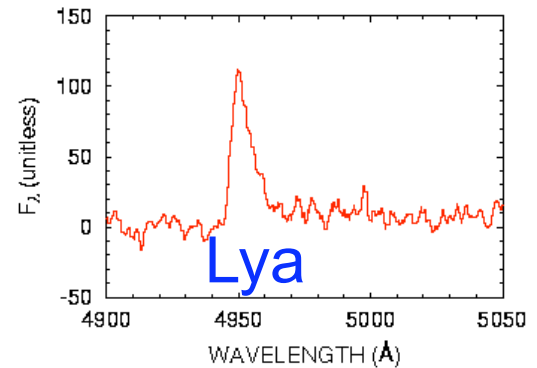
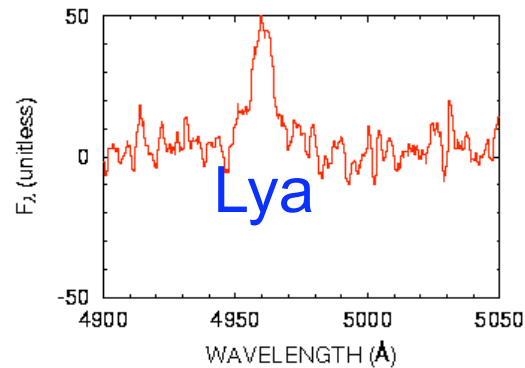
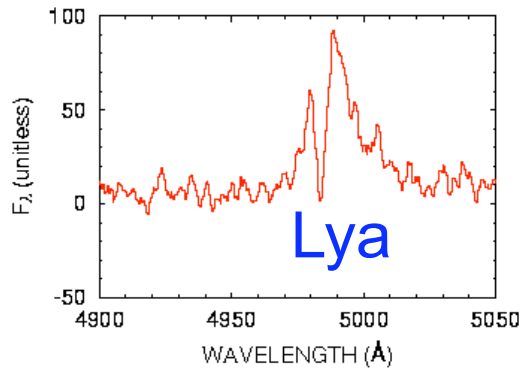


Detected in 400 ks XMM data
(O. Almaini, private communication)
**Stacking analysis is required
for undetected objects!!**

Keck/DEIMOS Spectroscopy of radio-quiet Lya blobs (Matsuda et al. 2006)

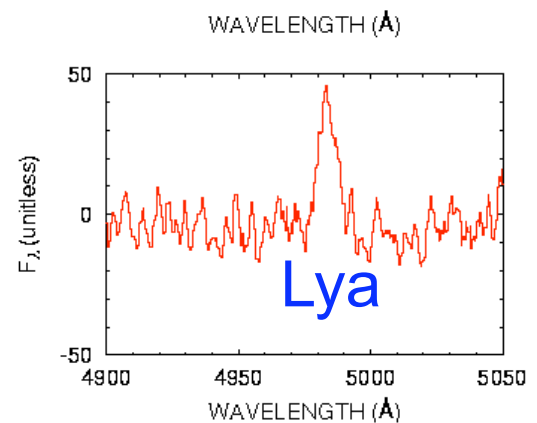
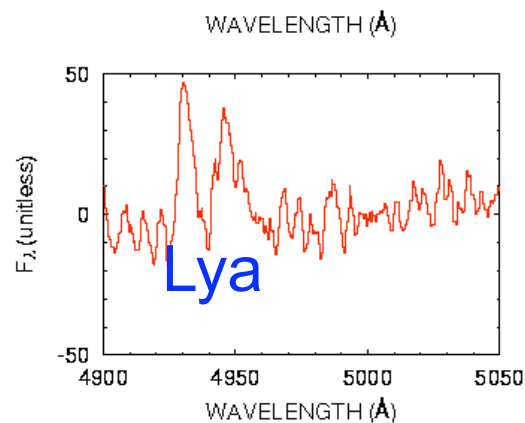
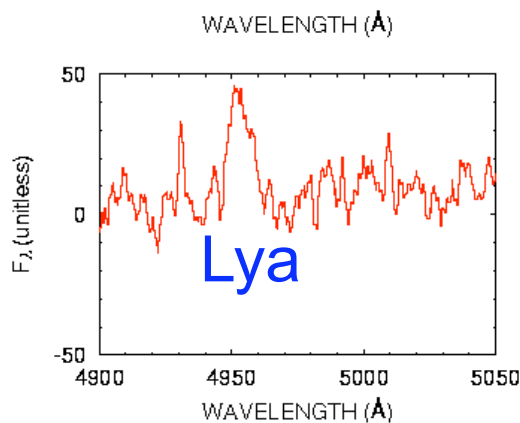


Keck/DEIMOS Spectroscopy of radio-quiet Ly α blobs (Matsuda et al. 2006)



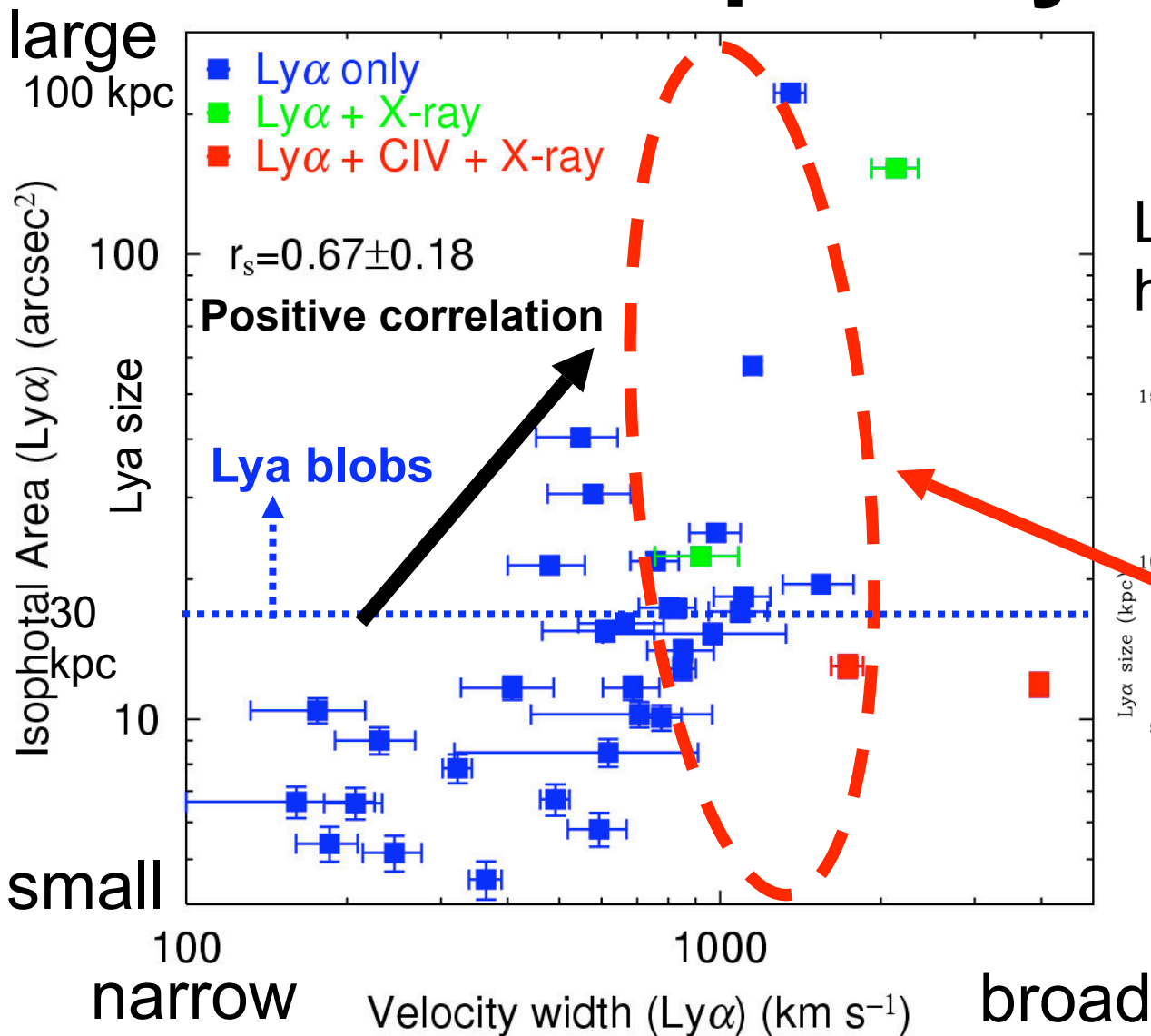
Ly α velocity width FWHM \sim 500-1700km/s

No CIV line is detected

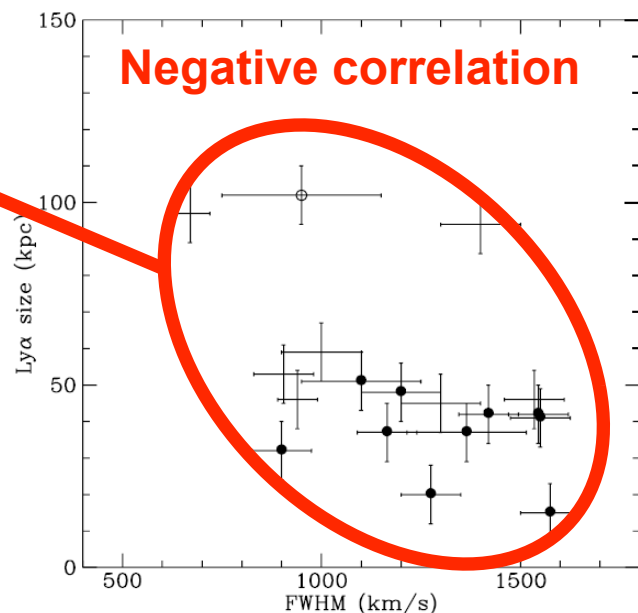


Ly α size and Ly α velocity width of radio-quiet Ly α blobs

(Matsuda et al. 2006)



Ly α halos around high-z radio galaxies (van Ojik et al. 1997)



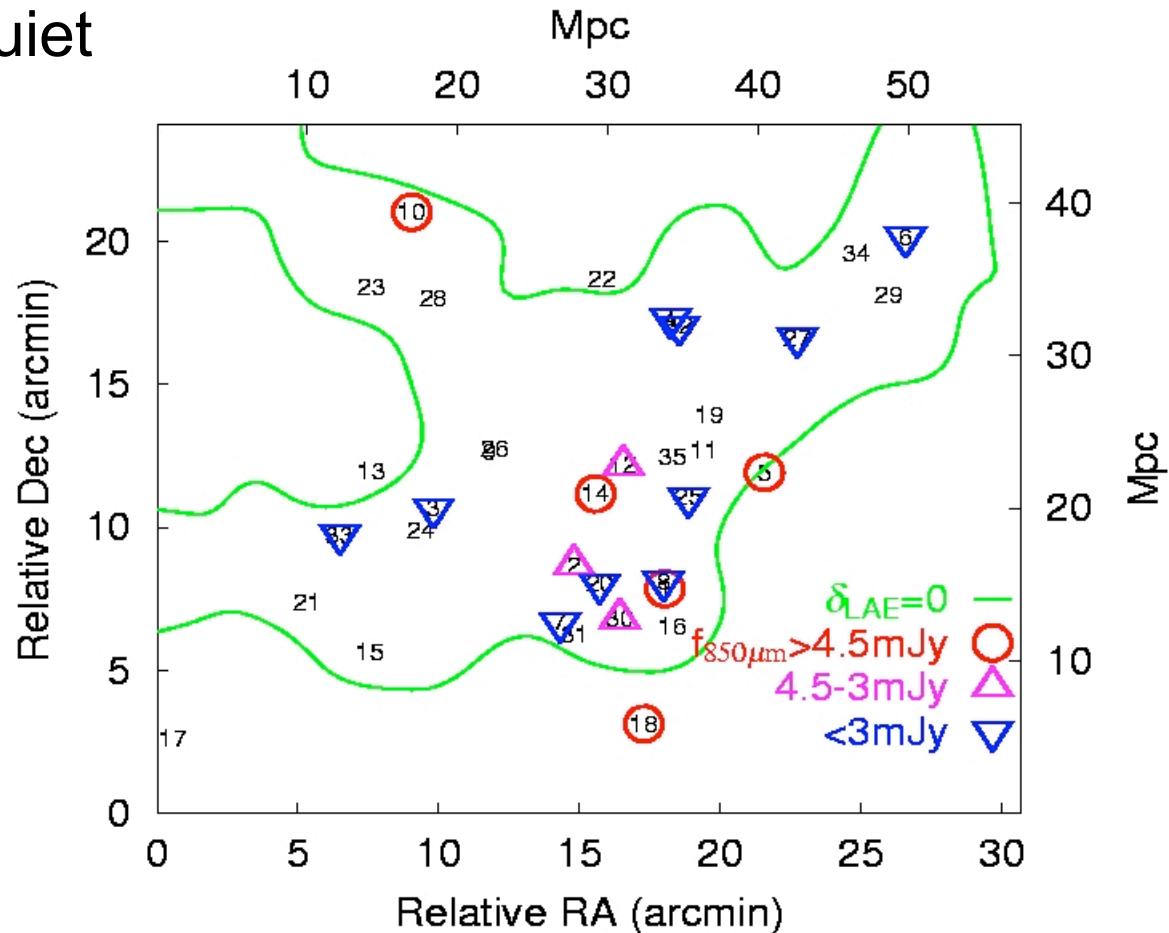
Submm photometry of radio-quiet Ly α blobs

(Geach, Matsuda, Smail et al. 2005)

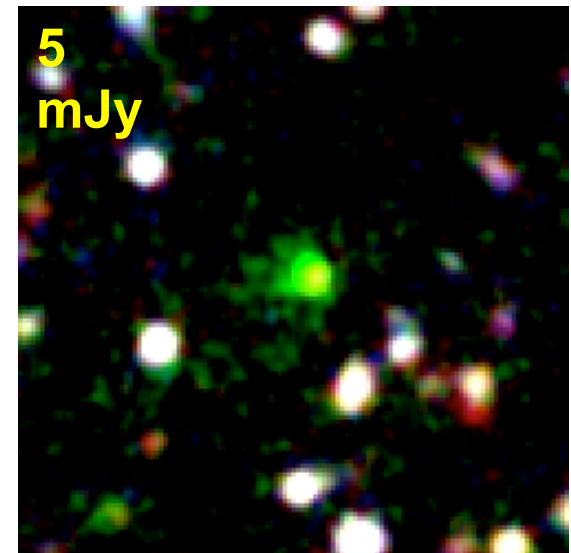
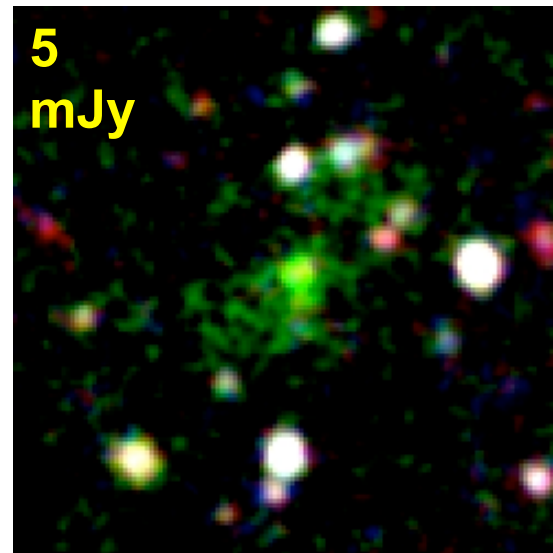
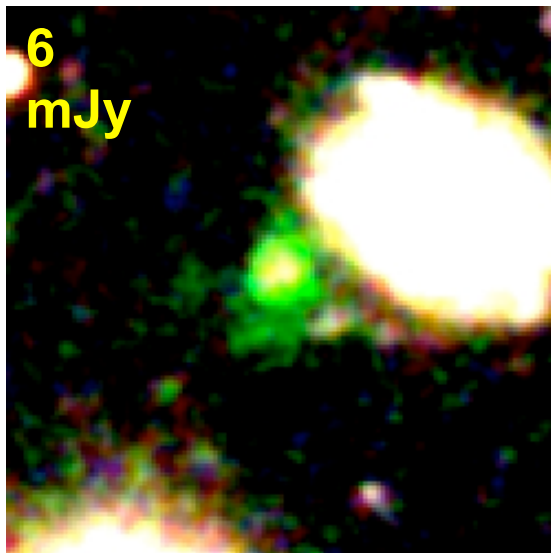
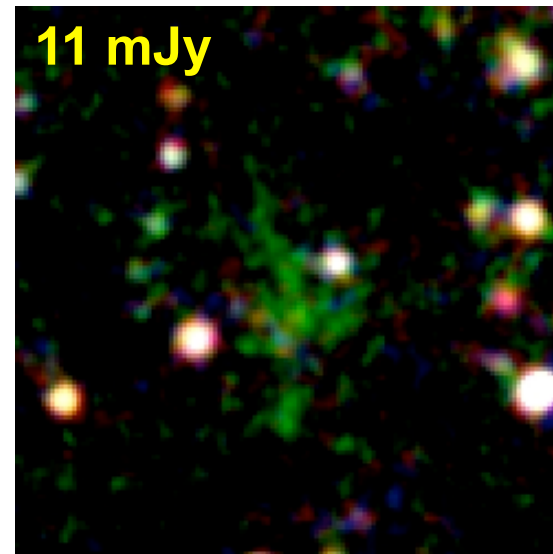
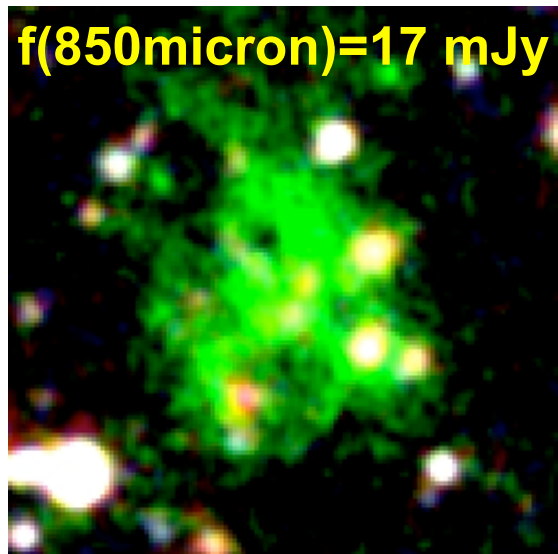
~30% (5/18) of radio-quiet Ly α blobs are detected (≥ 5 mJy) at 850 μ m

↔ >75% detection for radio galaxies at $z > 2.5$ (Archibald et al. 2001)

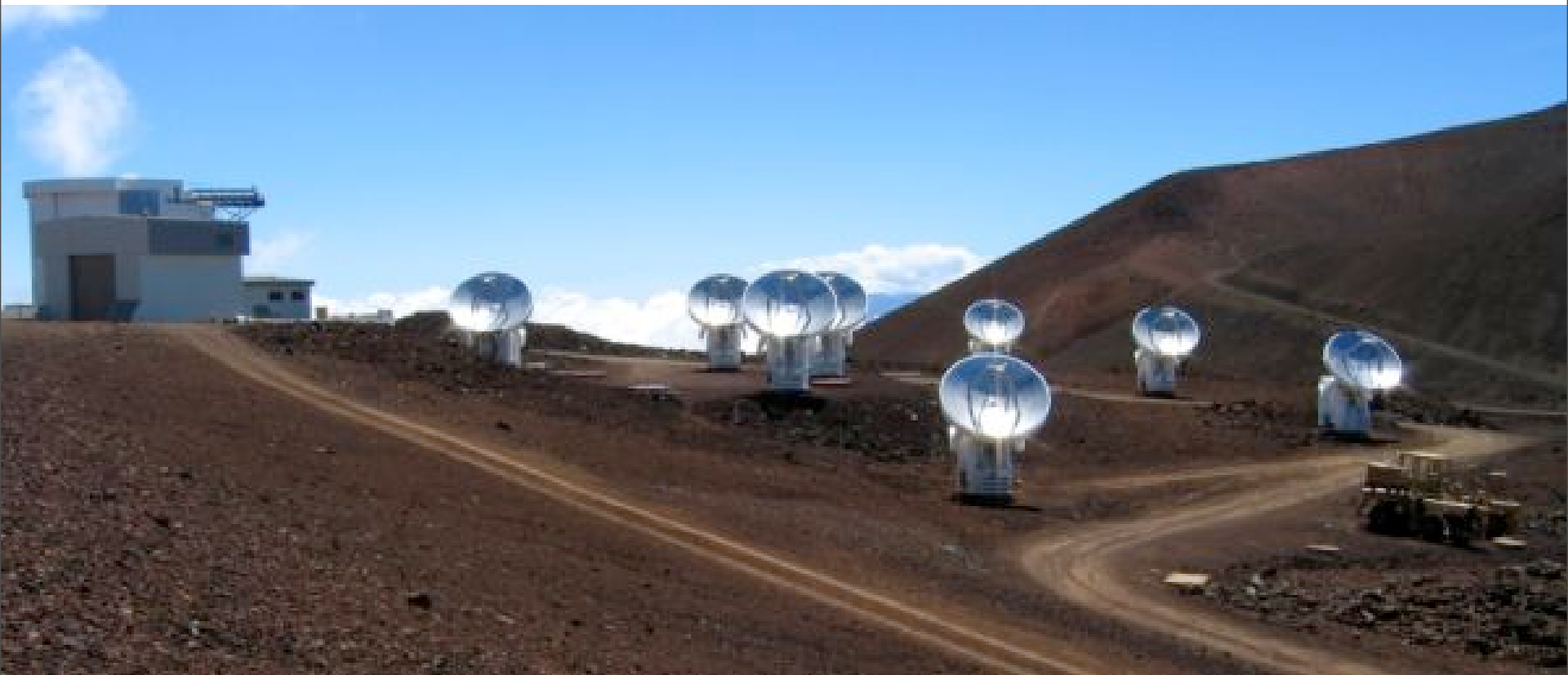
The average (stacked) 850 μ m flux is ~3 mJy (L(FIR)~ 5×10^{12} Lsun)



Submm bright Lya blobs



2. High resolution submm observations of a submm bright, radio-quiet Ly α blob

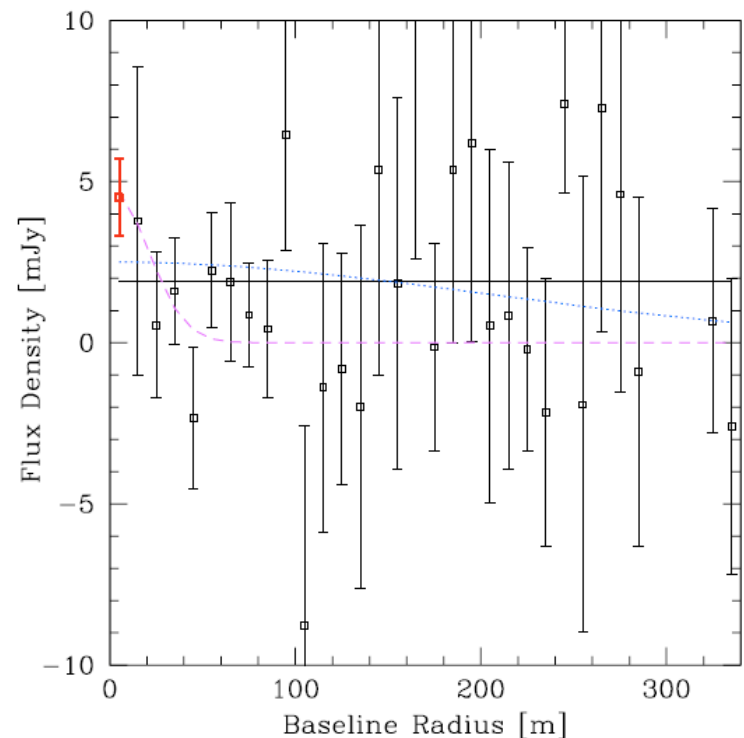
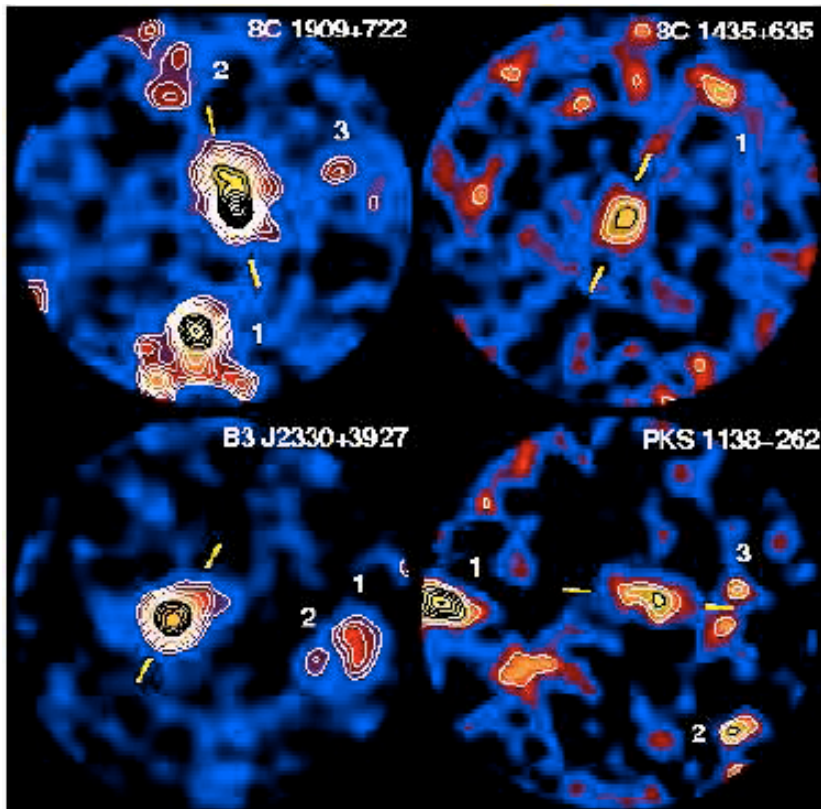


Submillimeter Array

High-z radio galaxies have spatially extended dust emission!!

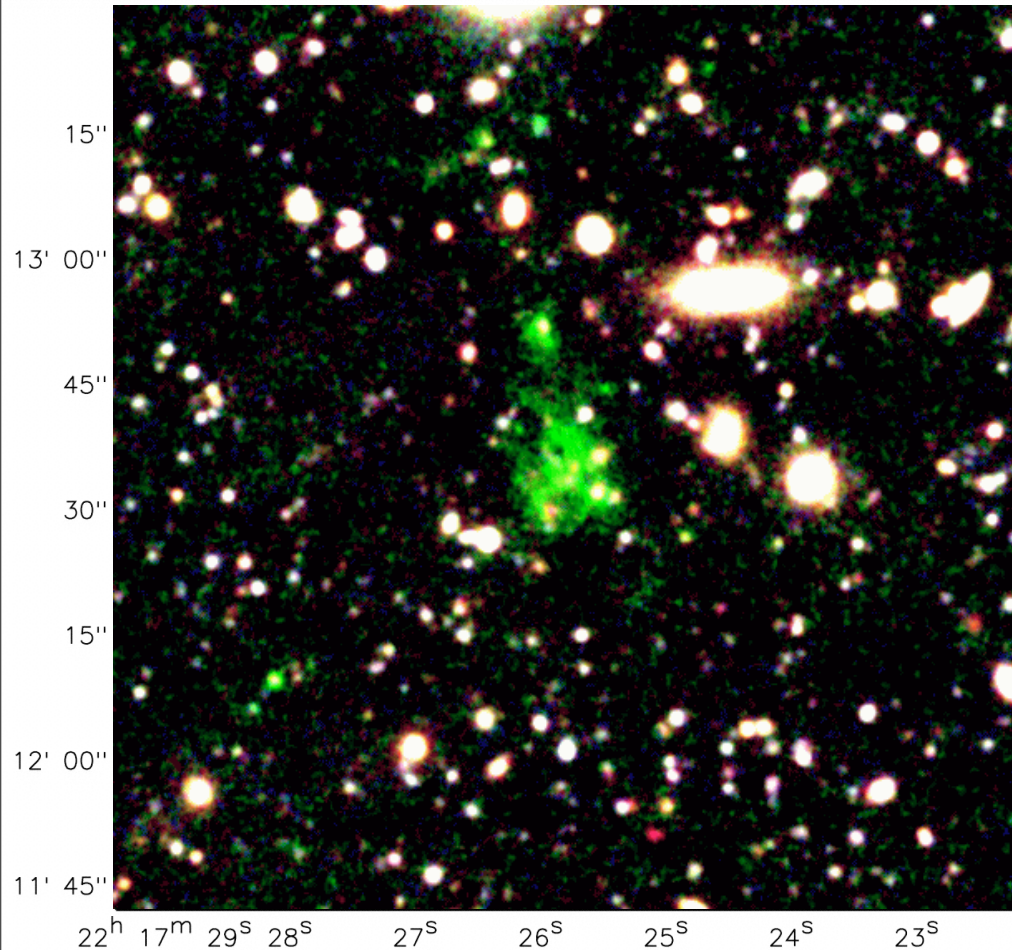
Submm/mm source size of $\sim 30\text{-}250$ kpc

(Papadopoulos et al. 2000, Stevens et al. 2003, De Breuck et al. 2003)



SSA22 Lya blob1

- A submm bright, radio-quiet Lya blob



Lya size ~ 150 kpc

Lya luminosity

$\sim 10^{44}$ ergs/s

850 μ m flux density ~ 17 mJy

(Chapman et al. 2001)

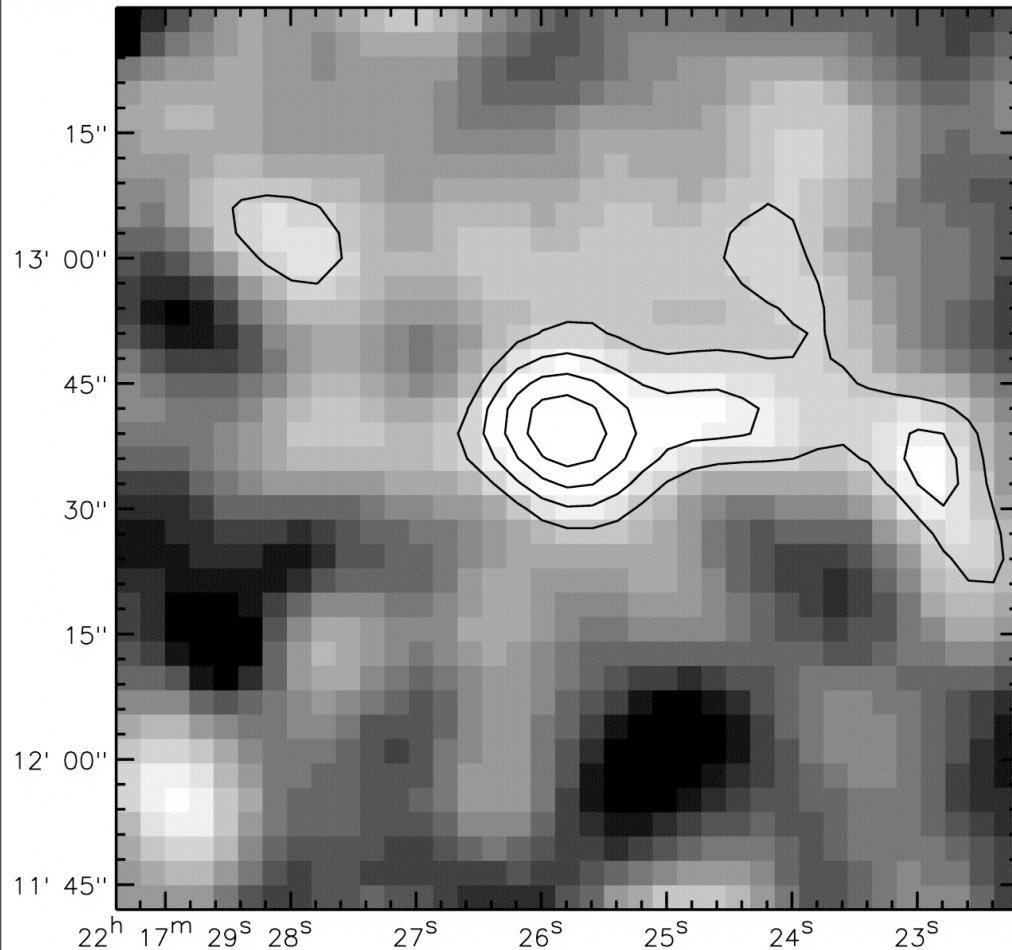
The submm source is *unresolved* with SCUBA
15" beam (~ 110 kpc).

But we don't know whether
the submm source is

compact (<10 kpc) or
extended (>10 kpc).

SSA22 Lya blob1

- A submm bright, radio-quiet Lya blob



Lya size ~ 150 kpc

Lya luminosity

$\sim 10^{44}$ ergs/s

850 μ m flux density ~ 17 mJy

(Chapman et al. 2001)

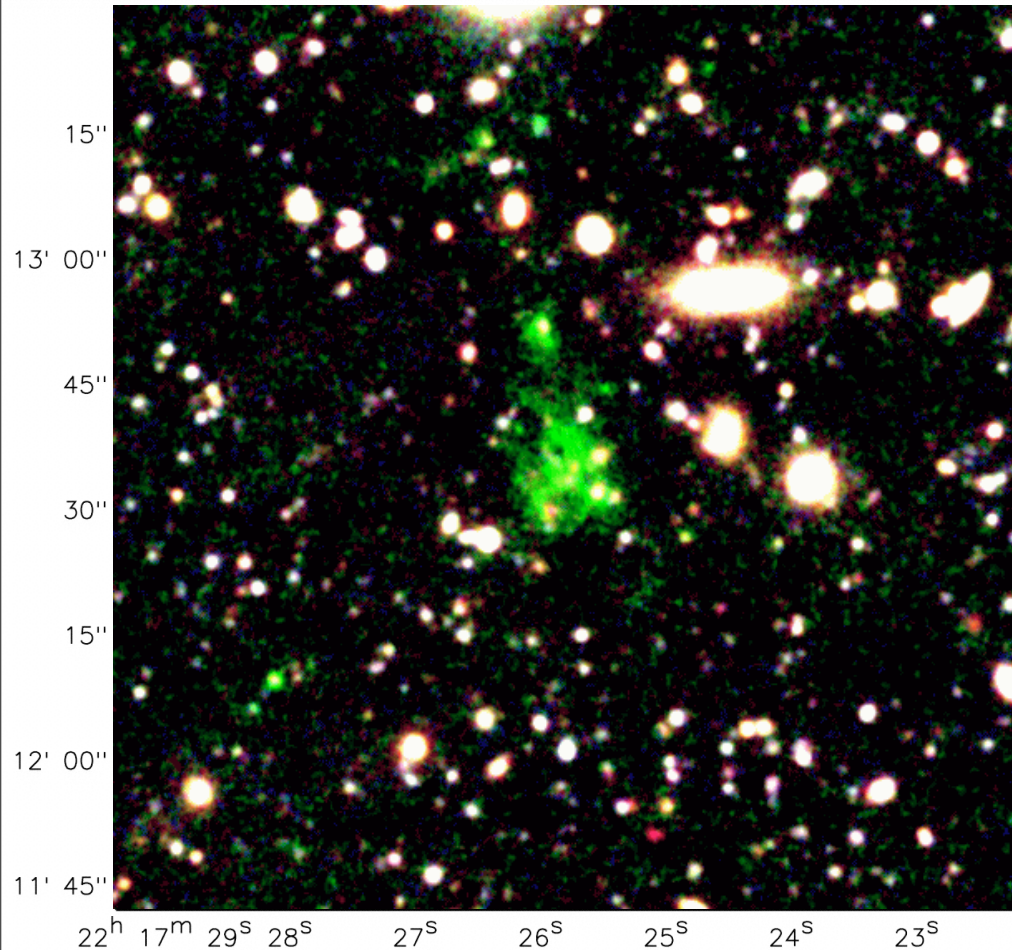
The submm source is ***unresolved*** with SCUBA
15" beam (~ 110 kpc).

But we don't know whether
the submm source is

compact (< 10 kpc) or
extended (> 10 kpc).

SSA22 Ly α blob1

- A submm bright, radio-quiet Ly α blob



Ly α size \sim 150 kpc

Ly α luminosity

$\sim 10^{44}$ ergs/s

850 μ m flux density \sim 17 mJy

(Chapman et al. 2001)

The submm source is

unresolved with SCUBA
15" beam (\sim 110 kpc).

But we don't know whether
the submm source is

compact (<10 kpc) or
extended (>10 kpc).

SMA 880um observation

(Matsuda et al. ApJ, submitted)

Submm (~ 16 mJy) emission is resolved out

→ Spatially extended!!

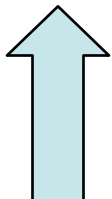
beam size $\sim 2''$

rms ~ 1.4 mJy / beam

Source size

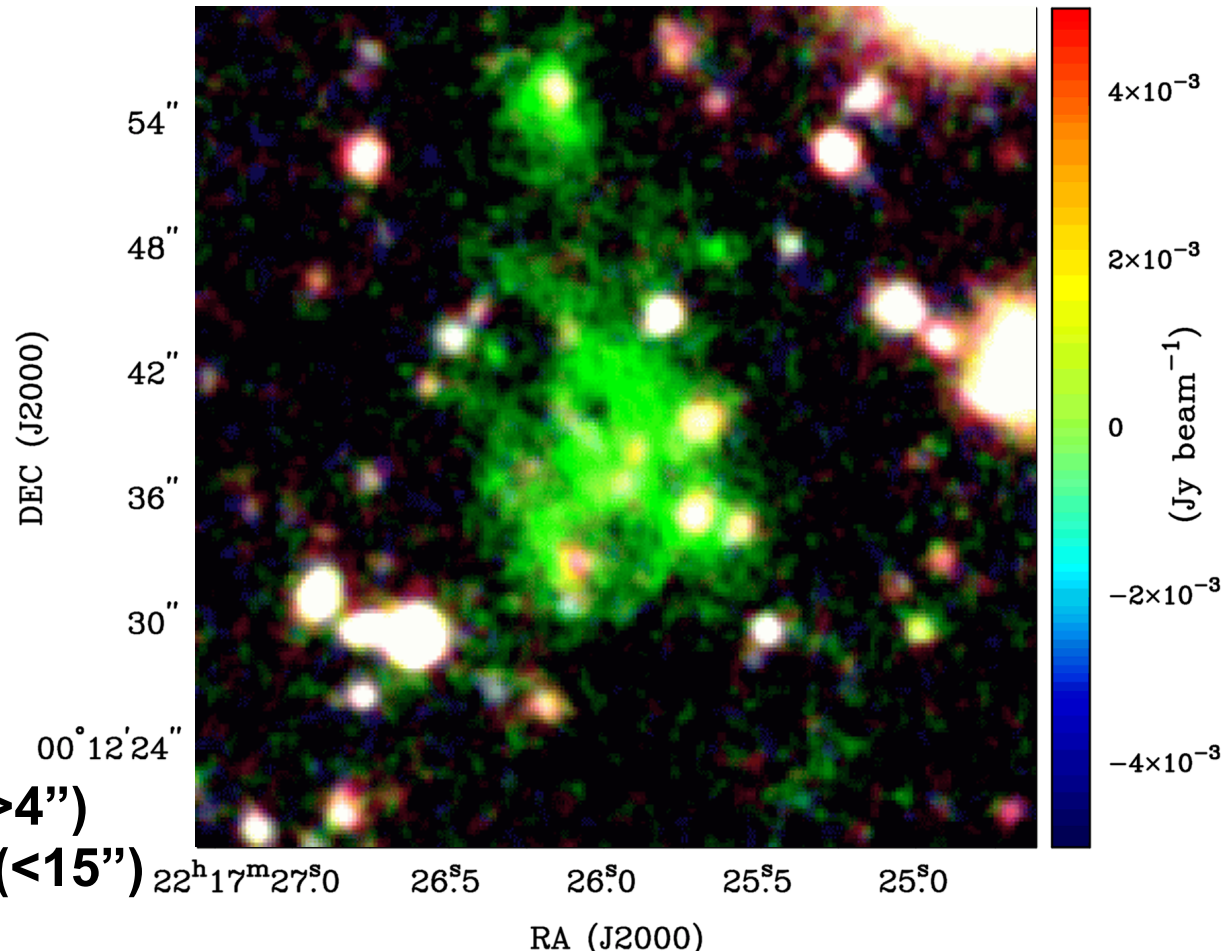
$\sim 4 - 15''$

(30 - 110 kpc)



Resolved with SMA ($>4''$)

Unresolved with SCUBA ($<15''$)



SMA 880um observation

(Matsuda et al. ApJ, submitted)

Submm (~ 16 mJy) emission is resolved out

→ Spatially extended!!

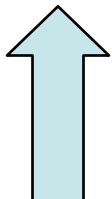
beam size $\sim 2''$

rms ~ 1.4 mJy / beam

Source size

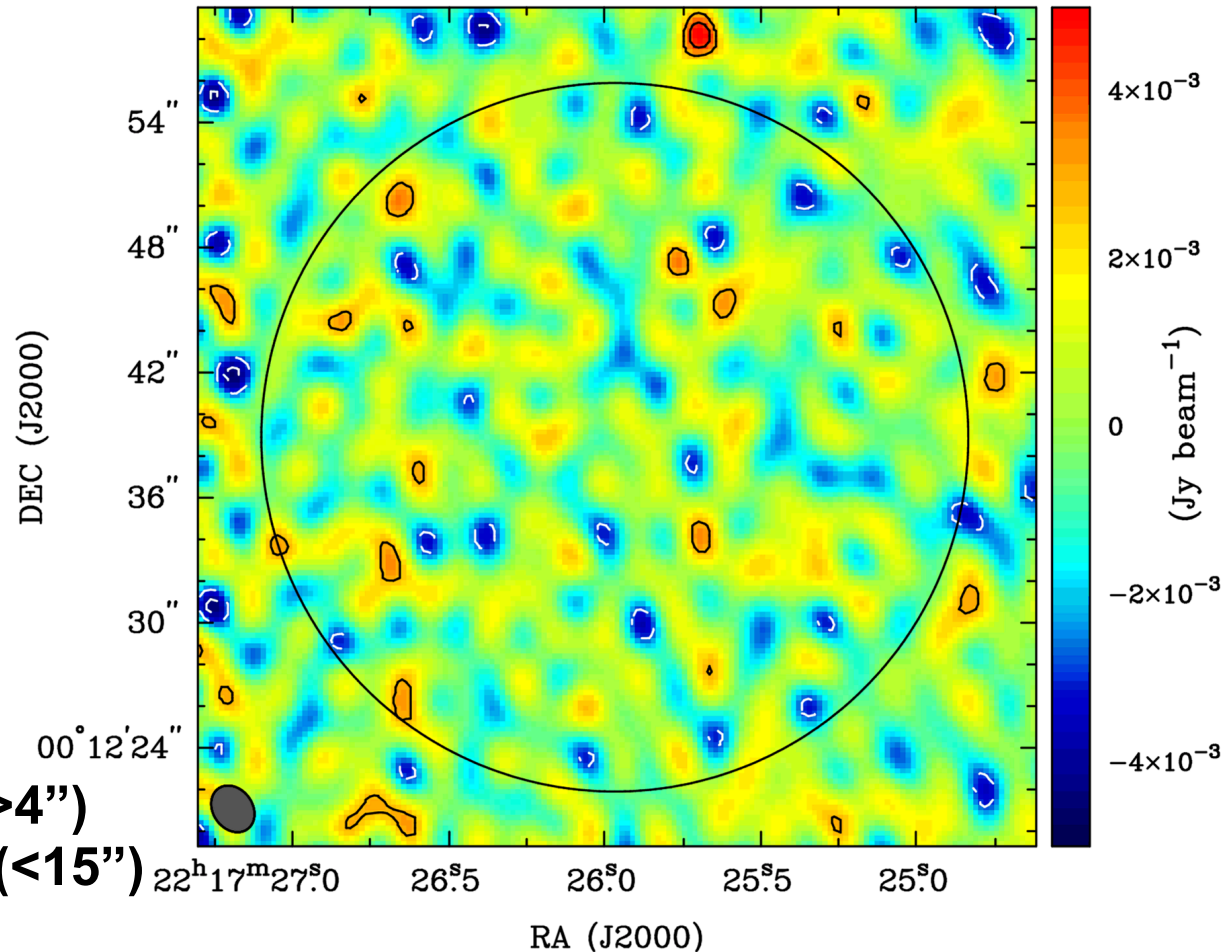
$\sim 4 - 15''$

(30 - 110 kpc)



Resolved out with SMA ($>4''$)

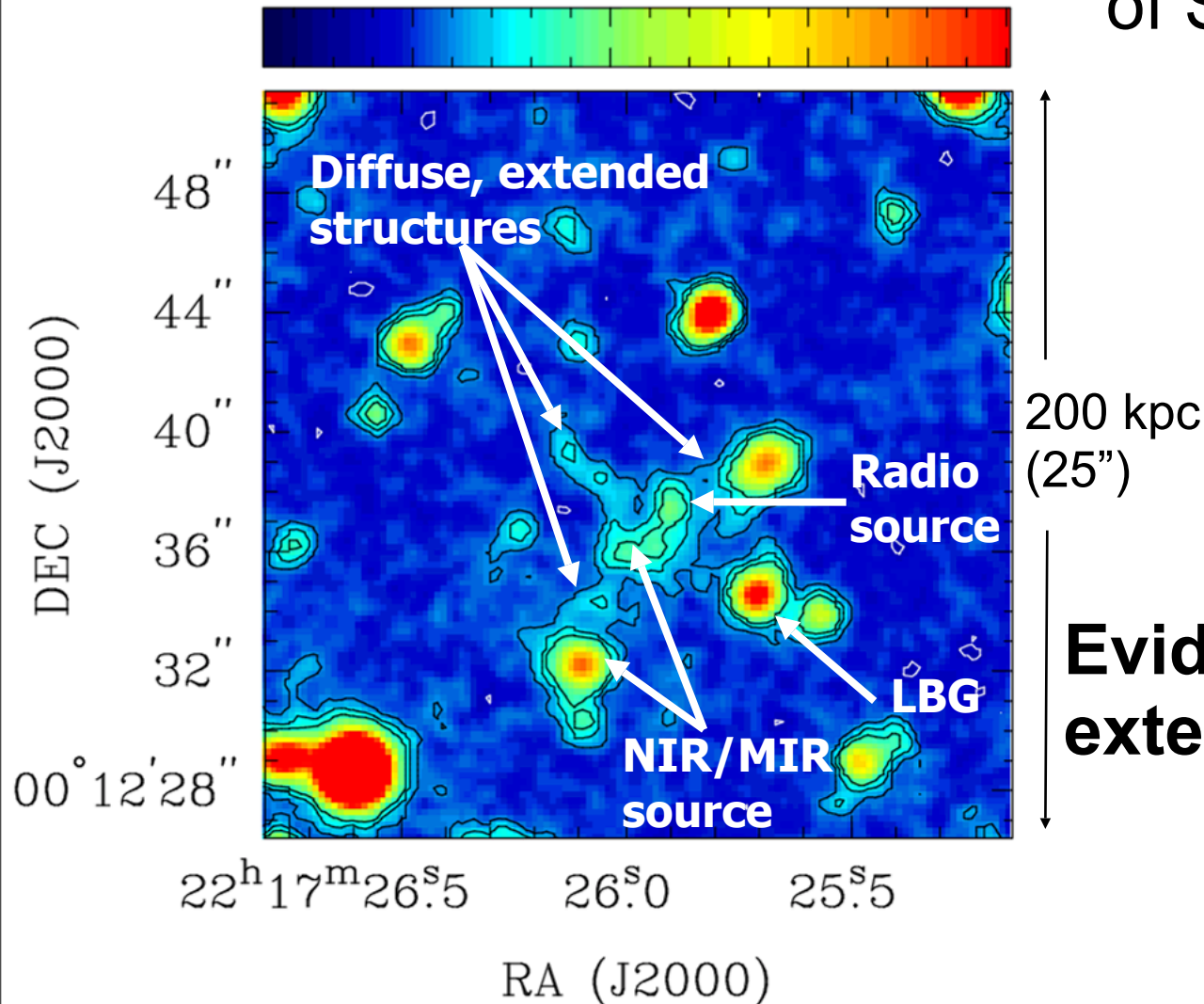
Unresolved with SCUBA ($<15''$)



Spatially extended starbursts?

SFRSD(UV) ($M_{\odot} \text{ yr}^{-1} \text{ kpc}^{-2}$)
0 0.05 0.1 0.15

UV continuum image
of SSA22 Lya blob1



UV continuum emission shows multiple sources & diffuse, extended structures.

Evidence for spatially extended starbursts!!

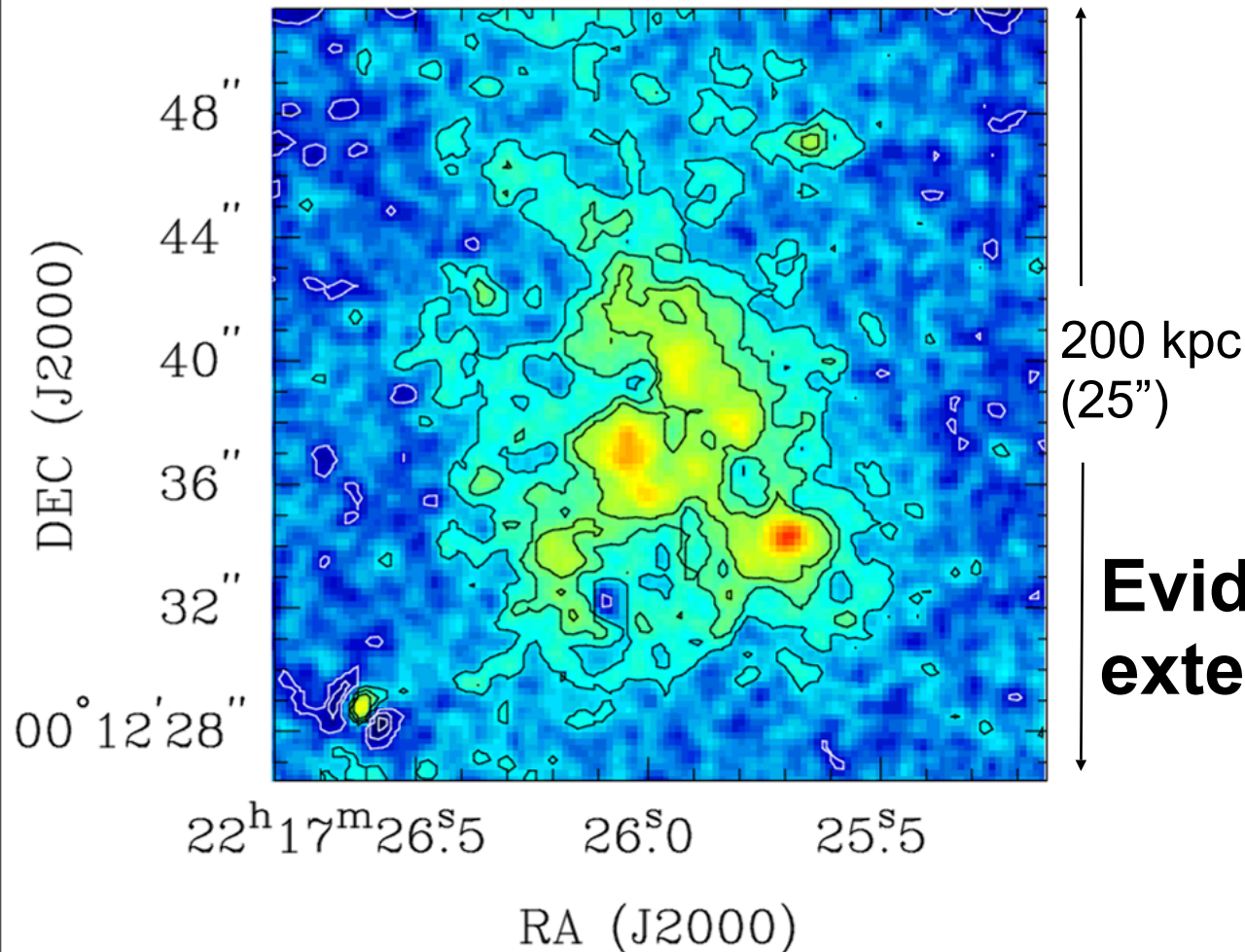
Spatially extended starbursts?

SFRSD(Ly α) ($M_{\odot} \text{ yr}^{-1} \text{ kpc}^{-2}$)

0 0.02 0.04 5



UV continuum image
of SSA22 Ly α blob1



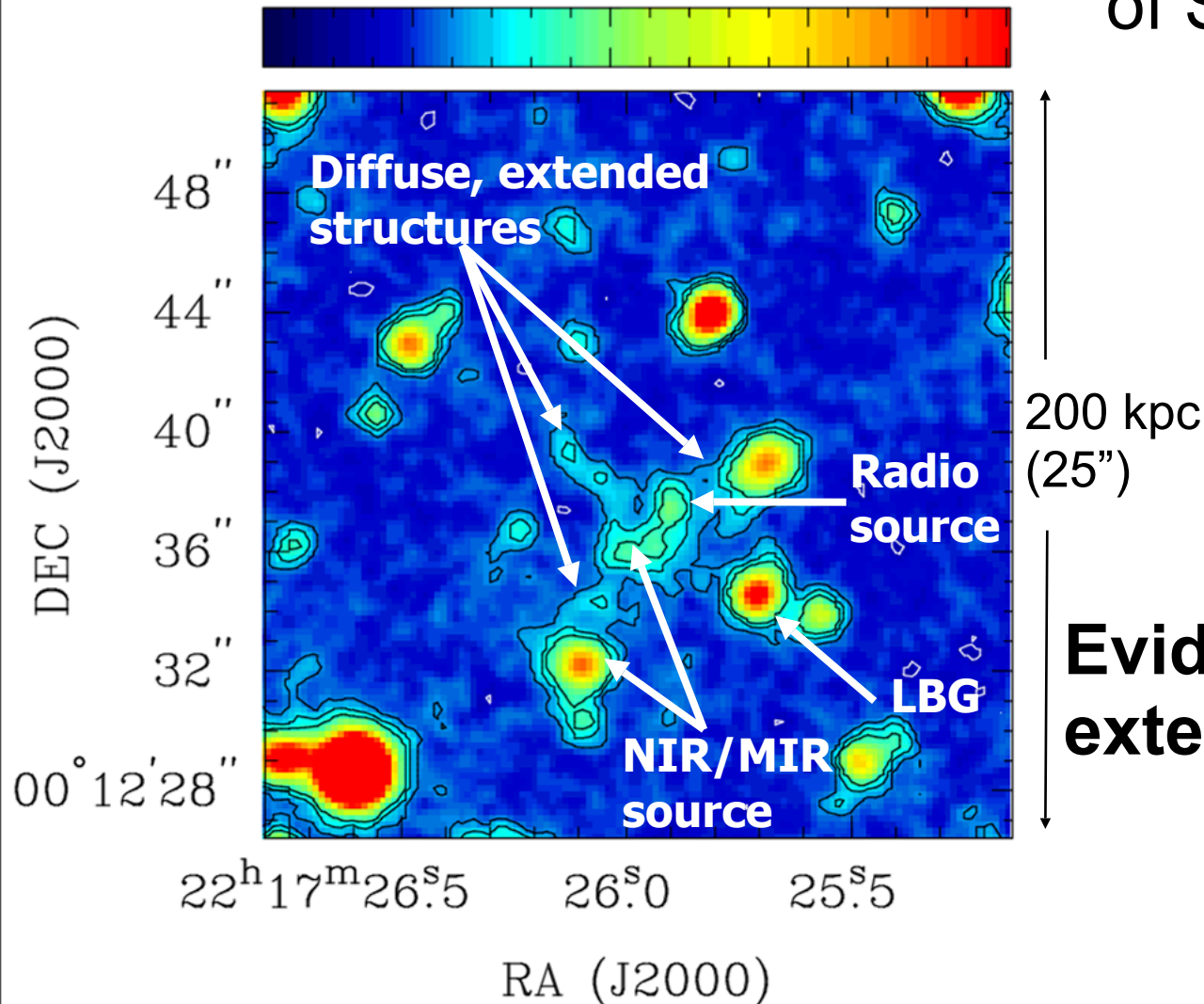
UV continuum
emission shows
multiple sources &
diffuse, extended
structures.

**Evidence for spatially
extended starbursts!!**

Spatially extended starbursts?

SFRSD(UV) ($M_{\odot} \text{ yr}^{-1} \text{ kpc}^{-2}$)
0 0.05 0.1 0.15

UV continuum image
of SSA22 Lya blob1



UV continuum emission shows multiple sources & diffuse, extended structures.

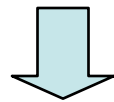
Evidence for spatially extended starbursts!!

Summary & Conclusion

The properties of radio-quiet Ly α blobs:

1. Characteristic phenomena in overdense environments
2. A significant fraction have bright submm emission
3. The largest blob has spatially extended submm emission

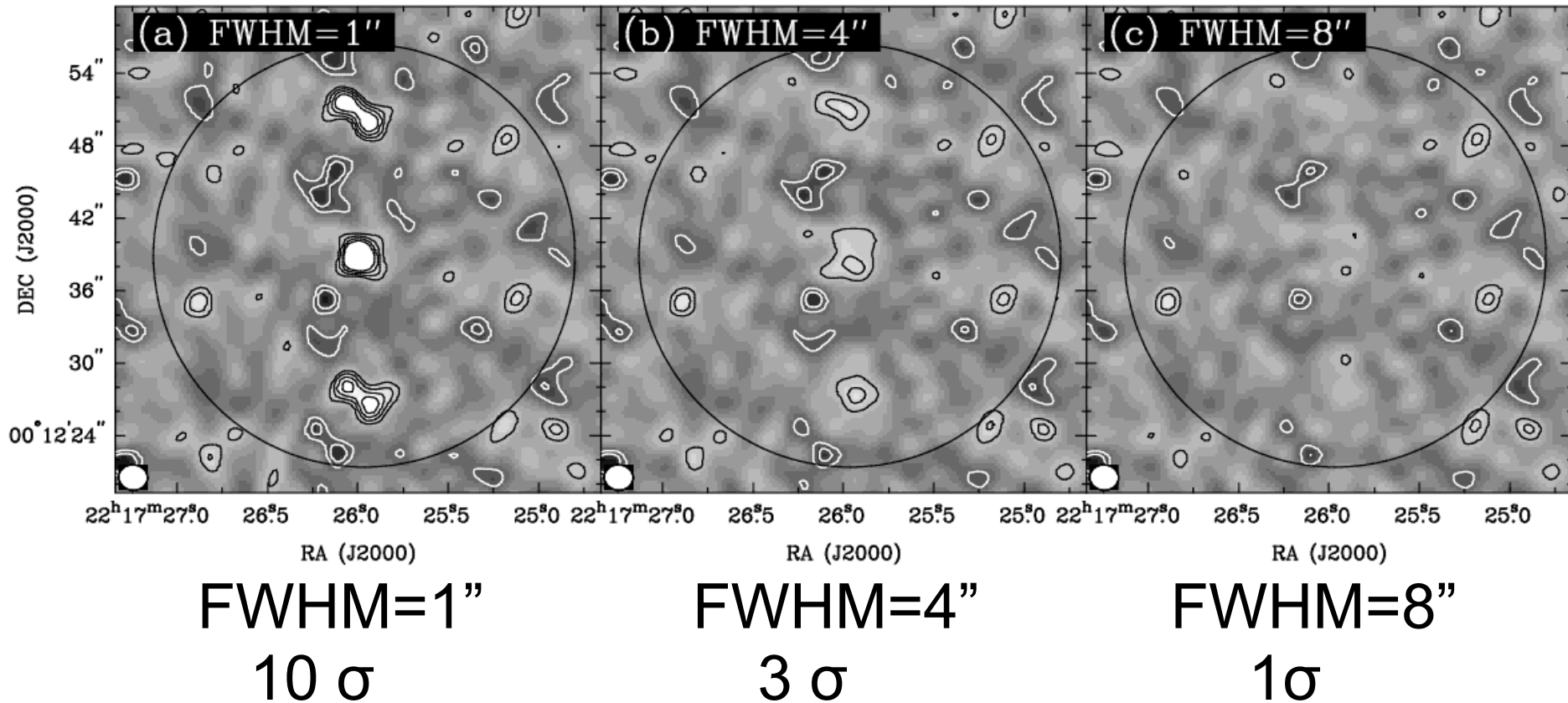
Spatially extended Ly α nebulae of radio-quiet Ly α blobs & high-z radio galaxies



Spatially extended starbursts induced by interactions or mergers of gas clumps in overdense environments?

(+ galactic winds? + scattering?)

Simulation of the SMA observation



Visibility amplitude

The best fit model is a Gaussian with $\text{FWHM}=5''.2 \pm 1''.3$ (40 ± 10 kpc)

