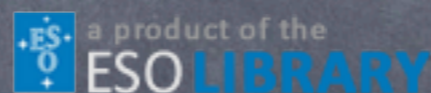


# Lessons Learned

## Implementing an Open Source Library System

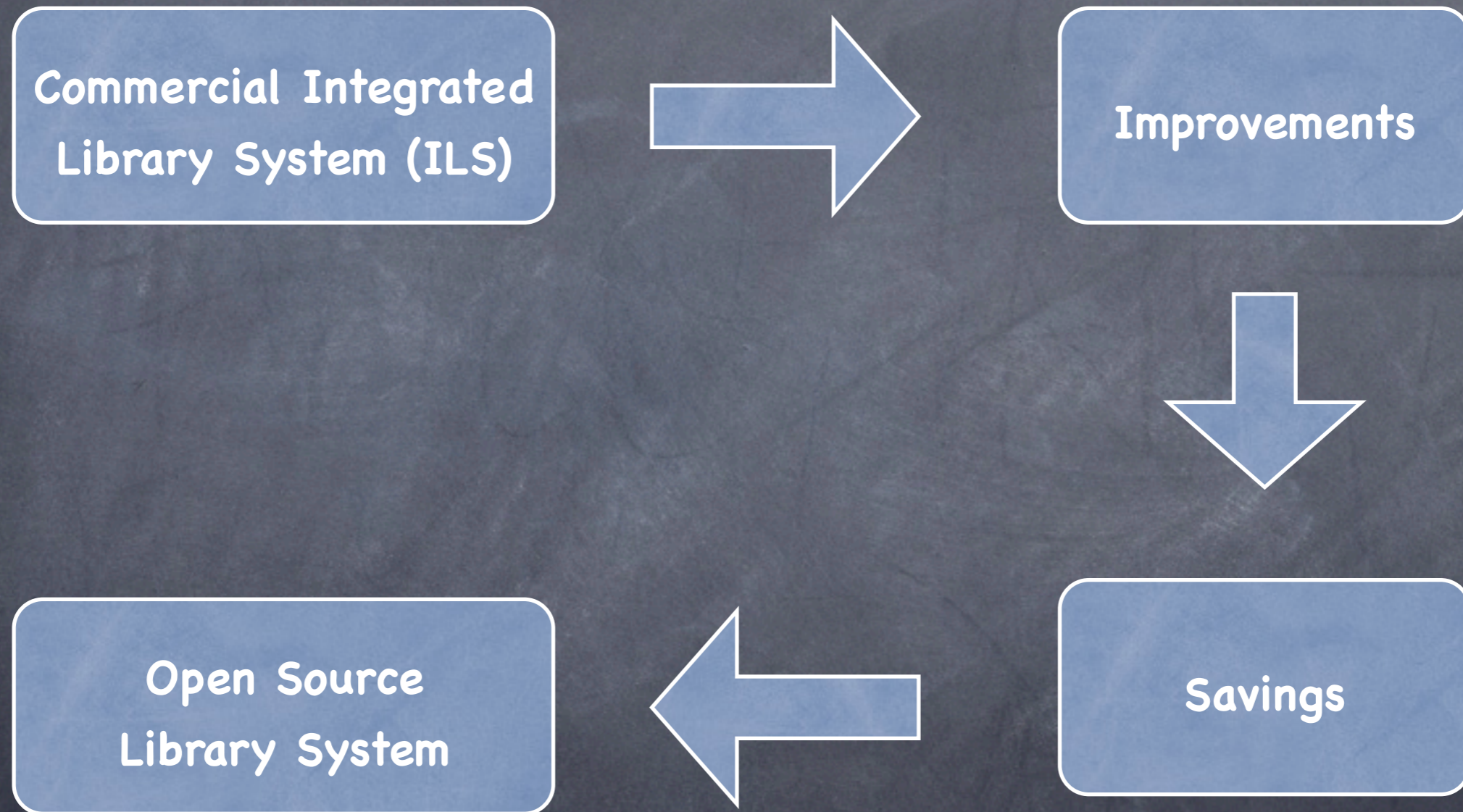
Uta Grothkopf & Christopher Erdmann

[library@eso.org](mailto:library@eso.org)



LISA VI, Pune, India, 14-17 Feb 2010

# Overview



# ILS: Unicorn (SirsiDynix)



European Southern Observatory  
Your Electronic Library on the Web

### Information Desk

- A -- New acquisitions (current month)
- B -- Amateur Astronomy Books
- C -- Popular Astronomy Books
- D -- Videos and DVDs
- MORE





[Search/Home](#) [Request/Checkout Material](#) [Library Home](#) [Contact Us](#) [My Account](#)

[Go Back](#) [Help](#) [Limit Search](#) [New Search](#) [Previous](#) [Next](#) [Related Subjects](#) [Print/Email Marked](#) [Logout](#)

## Search Results

keywords anywhere "cosmology" search found 612 titles.

Pages << 1 2 3 4 ...10 ...20 ...30 31 >>

- |                         |   |  |   |
|-------------------------|---|--|---|
| #1                      | <b>XX(24005.1)</b>  | 2010   |  |
| <a href="#">Details</a> | <b>Bayesian Methods in Cosmology</b><br>Hobson, M.P.  |  |   |
| <a href="#">Mark</a>    | Please contact the librarians to request this item. Copies on order   |  |   |
|                         |   | <a href="#">Summary</a> <a href="#">Contents</a> |   |
| #2                      | <b>A 26-2 / 187</b>   | 2009   |  |
| <a href="#">Details</a> | <b>The primordial density perturbation: cosmology, inflation and the origin of structure</b><br>Lyth, D.H. (David H.) |  |   |
| <a href="#">Mark</a>    |   |  |   |
|                         |   | <a href="#">Summary</a> <a href="#">Contents</a> |   |
| #3                      | <b>A 3-2 / 70 (2009)</b>  | 2009   |   |
| <a href="#">Details</a> | <b>ASP conference series 2009</b><br>Astronomical Society of the Pacific (ASP)  |  |   |
| <a href="#">Mark</a>    | Copies on order   |  |   |
|                         |   | <a href="#">URL</a>                              |   |
| #4                      | <b>A 2-1 / 144</b>  | 2009   |  |
| <a href="#">Details</a> | <b>Discovering the expanding universe</b><br>Nussbaumer, H. (Harry)   |  |   |
| <a href="#">Mark</a>    |   |  |   |
|                         |   | <a href="#">Summary</a> <a href="#">Contents</a> |   |
| #5                      | <b>A 26-1 / 210</b>   | 2009   |  |
| <a href="#">Details</a> | <b>From first light to reionization : the end of the dark ages</b><br>Stiavelli, M. (Massimo)                         |  |   |
| <a href="#">Mark</a>    | Copies on order   |  |   |

**Continue search in**  
Google

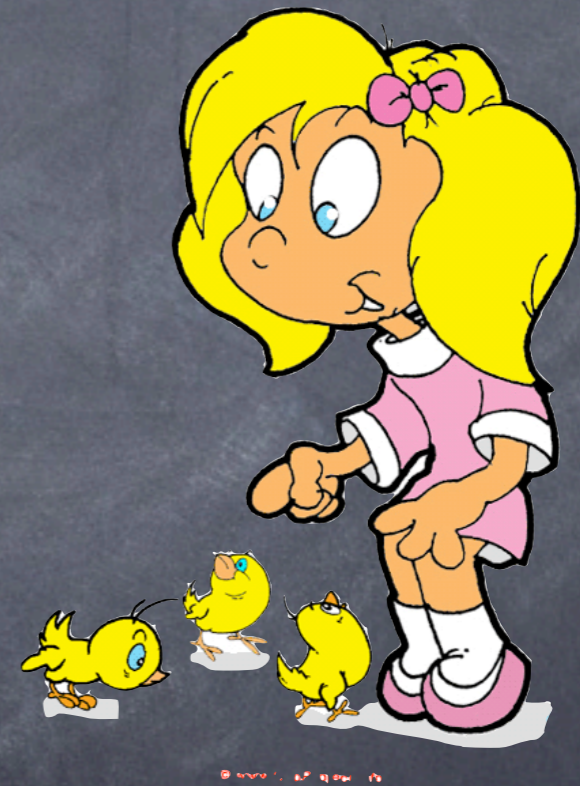
### Try these too...

ASTRONOMY  
BIANCHI COSMOLOGY  
BIG BANG THEORY  
FRIEDMANN UNIVERSE  
LEMAITRE UNIVERSE  
PRIMORDIAL FIREBALL  
STEADY STATE THEORY  
DE SITTER UNIVERSE  
EINSTEIN UNIVERSE  
EXPANDING UNIVERSE  
INFLATIONARY UNIVERSE  
QUANTUM COSMOLOGY  
RELATIVISTIC COSMOLOGY  
COSMIC ABUNDANCE  
HUBBLE TIME  
ASTROPHYSICS  
COSMOGONY  
COLD DARK MATTER  
EARLY UNIVERSE  
RELATIVISTIC VELOCITY  
STELLAR EVOLUTION  
RELATIVISTIC ASTROPHYSICS  
COSMOCHEMISTRY  
DARK MATTER  
PROTOGALAXIES  
COSMOLOGICAL CONSTANT  
COSMIC STRINGS  
UNIVERSE

# ILS: Unicorn (SirsiDynix)

## ↑ Advantages

- All necessary modules
- Legacy system at ESO (little development necessary)
- Maintained by vendor



# ILS: Unicorn (SirsiDynix)

## ↓ Disadvantages

- Expensive maintenance
- No access to data
- No influence on look & feel (OPAC needs make-over)
- Modular system



© 2008 SirsiDynix Inc.

# Change ?

## Incentives

- Fully integrated system (web-based)
- More control over functionality
- Access to data
- Cutting-edge technology
- Diminish costs



# Costs



© www.digitalexperts.com

## One-time costs

- Purchase new system
- Data migration
- Customization

## Ongoing costs

- Lower maintenance costs
- Access to community developments
- Features not developed by community (outsourced?)

# Checklist

- Modules? Web-like navigation?
- Multi-site library system support?
- Company background (European customers?)
- Migration from SirsiDynix
- Costs, support, training...
- Specific questions important for ESO libraries





# Candidates

- Koha by LibLime



- Koha by PTFS



- Evergreen by GPLS  
(Georgia Public Library System)



- Liberty by SoftLink

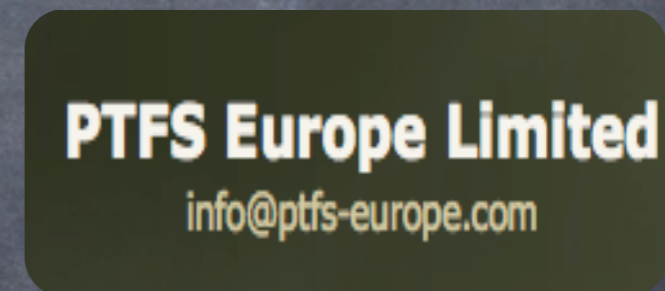
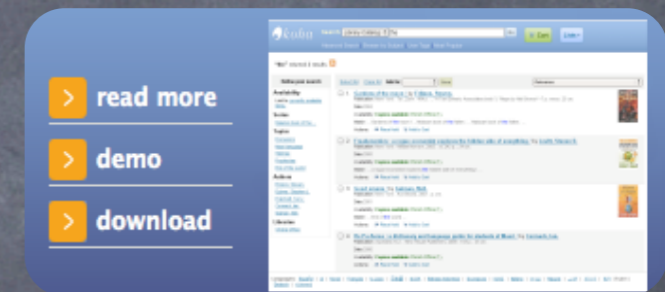
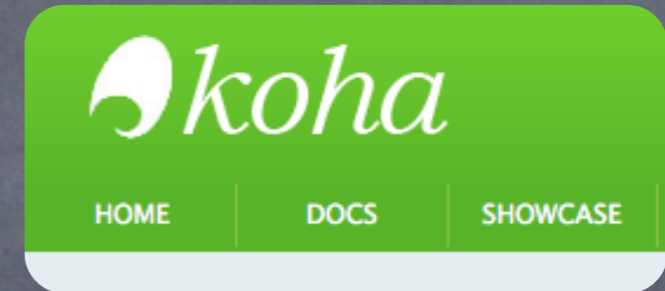


# And the Winner is...

Koha Library System.

Vendor: PTFS / PTFS Europe

- Sufficiently developed (acquisitions module)
- Widely used
- Moderate costs
- Marketed by PTFS Europe  
Unicorn experts (data migration !!)



# Koha

Search Library Catalog cosmolog\*

Go

Cart

Lists

Advanced Search

"cosmolog\*" returned 644 results.

### Refine your search

#### Libraries

[Garching](#)

[Santiago](#)

#### Series

[Space Telescope Scie...](#)

[Proceedings of the s...](#)

[Symposium on mapping...](#)

[Ecole d'Ete de Physi...](#)

[Proceedings of the 2...](#)

[Show More](#)

#### Authors

[Dopita, M.A. \(Michae...](#)

[Kidger, M. \(Mark\)](#)

[Bernardeau, F. \(Fran...](#)

[Ratcliffe, H. \(Hilto...](#)

[Quiros, J. \(Israel\)](#)

[Show More](#)

#### Topics

[COSMOLOGY](#)

[CONFERENCES](#)

[UNIVERSE](#)

[GALAXY EVOLUTION](#)

[LARGE SCALE](#)

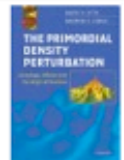
[STRUCTUR...](#)

[Show More](#)

Select All Clear All Add to: Save

Publication/Copyright Date: Newest to Oldest

1. [The Primordial Density Perturbation: Cosmology, Inflation and the Origin of Structure.](#)  
by Lyth, D.H. (David H.); Liddle, A.R. (Andrew R.).  
Type:  
Class Mark: A 26-2 / (?)  
Availability: No copies available  
Match: ... The Primordial Density Perturbation: [Cosmology](#), Inflation and the Origin of Structure ... [COSMOLOGY](#) ...  
Actions: [Add to Cart](#)



2. [Inflationary Cosmology.](#)  
by Lemoine, M. (Martin); Martin, J. (Jerome); Peter, P. (Patrick).  
Type:  
Class Mark: A 26-1 / 202  
Series title: Lecture notes in physics  
Volume: 738  
Availability: **Copies available at:** [Garching \(1\)](#), [Santiago \(1\)](#).  
Match: ... Inflationary [Cosmology](#) ...  
Actions: [Add to Cart](#)



3. [Mapping the Galaxy and Nearby Galaxies.](#)  
by Wada, K; Combes, F. Mapping the galaxy and nearby galaxies (June 2006 : Ishgaki, Japan).  
Type:  
Class Mark: A 24-1 / 56  
Series title: Astrophysics and space science proceedings  
Availability: **Copies available at:** [Garching \(1\)](#).  
Match: ... [COSMOLOGY](#) ...  
Actions: [Add to Cart](#)



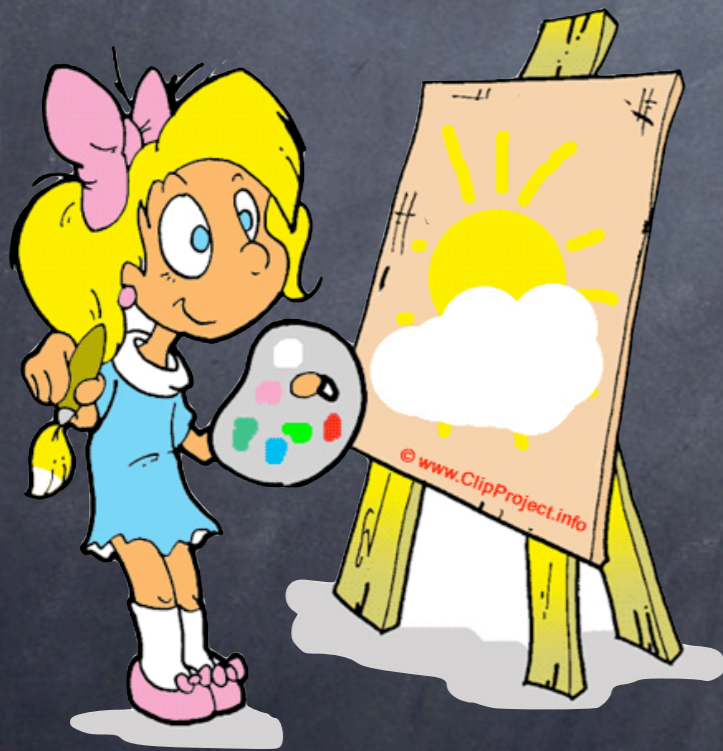
4. [Relativity, Astrophysics and Cosmology.](#)  
by Belusevic, R. (Radoje).  
Type:  
Class Mark: A 26-2 / 183  
Availability: **Copies available at:** [Santiago \(2\)](#), [Garching \(1\)](#), [Lost \(1\)](#)



# Customizing the System

Areas that needed attention:

- Cataloging (multi-site library)
- Circulation
- OPAC
- Acquisitions



# Customizing the System

(contd.)

We developed

- Acquisitions workflow
- OPAC: description of brief and full record view
- Circulation: outline of improvements
- Prioritized lists of changes



# Customizing the System

(contd.)

## PTFS

- installed Koha on our server
- applied minor OPAC changes
- prepared **data migration**
- gave us quotes for tailoring (negotiable)



# Customizing the System

(contd.)

At the same time . . .



The screenshot shows the LibLime website header with the logo and navigation menu. The main content area features a news article titled "PTFS to Acquire LibLime" with a sub-header "— filed under: [News](#)". The article text, in purple, states: "Bethesda, MD — January 13, 2010 — Progressive Technology Federal Systems, Inc. (PTFS), an industry-leading library solutions provider and developer of the ArchivalWare digital library and content management software, has announced it will acquire LibLime, the global leader in open-source software solutions for libraries. The transaction is expected to close before the end of January 2010."

including GetIT, LibLime-developed acquisitions module

# Customizing the System

(contd.)



Many phone conversations  
later...

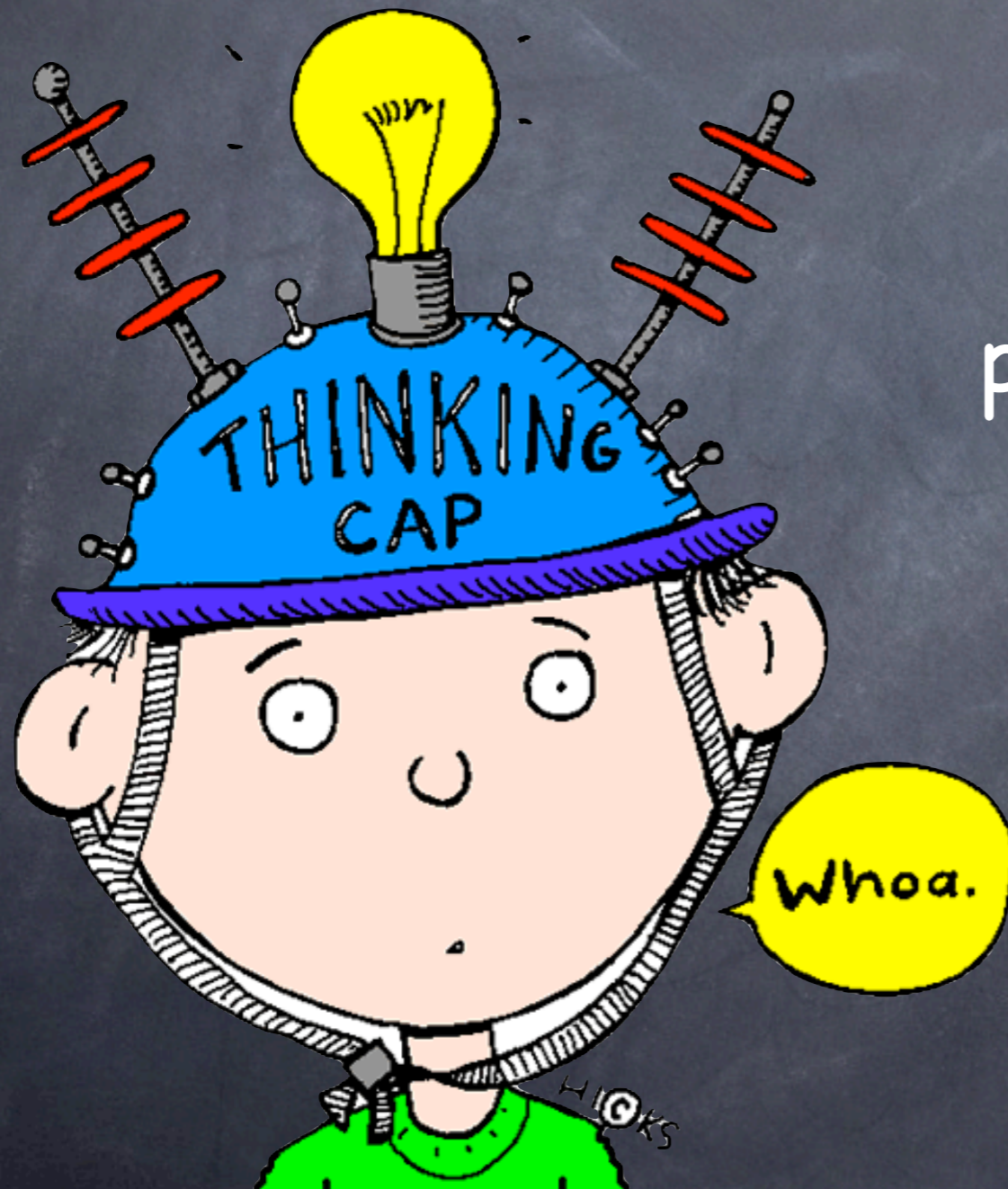


# We reevaluated the situation

Where do we go  
from here?



...and came to the conclusion



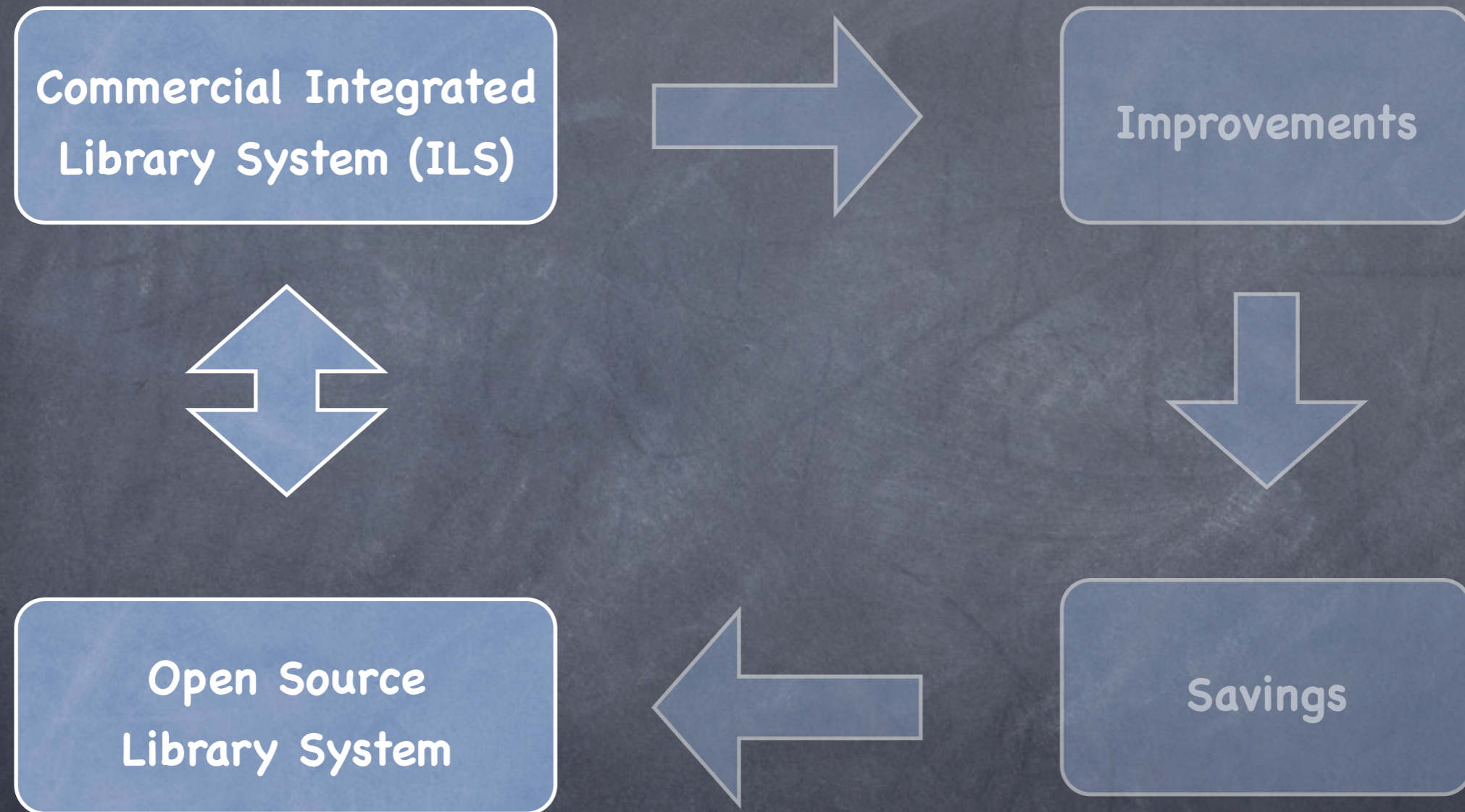
that it would be best to  
put the system on hold for  
a while.

# Agreement

- leave Koha system at ESO as-is
- monitor PTFS/LibLime merger
- pay special attention to **GetIT** module
- revisit situation approx. September 2010

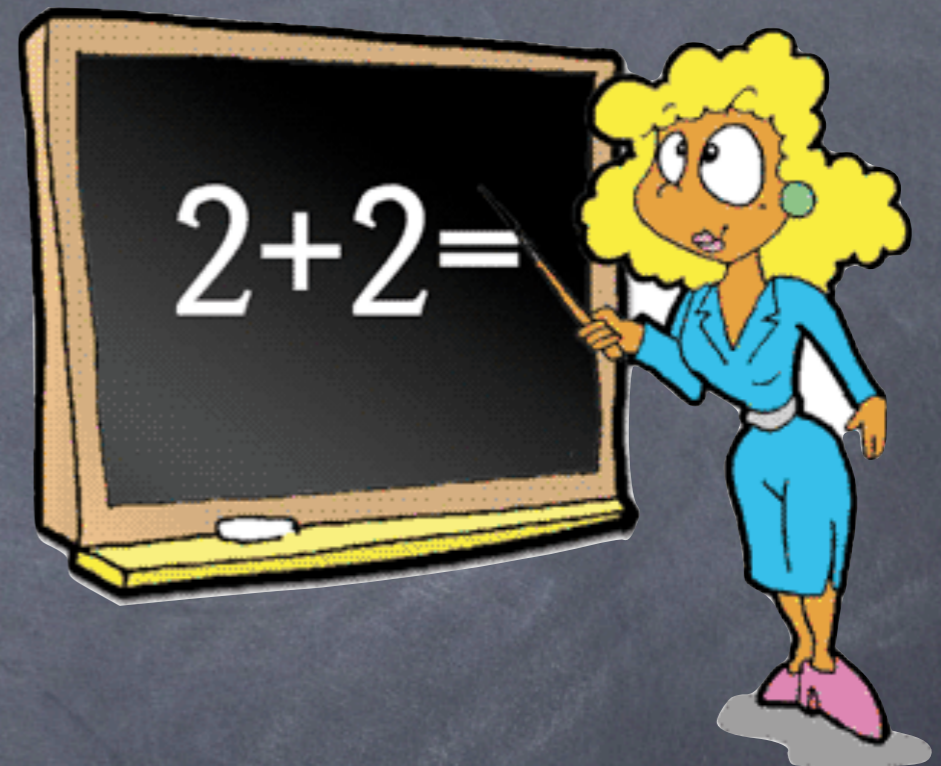


# Status



# Lessons Learned

- Look carefully at existing features
- Calculate time and money necessary for customization
- Prepare **use cases** !!



© [www.ClipartProject.info](http://www.ClipartProject.info)

# Lessons Learned

- Look carefully at existing features
- Calculate time and money necessary for customization
- Prepare use cases !!

TO BE CONTINUED

