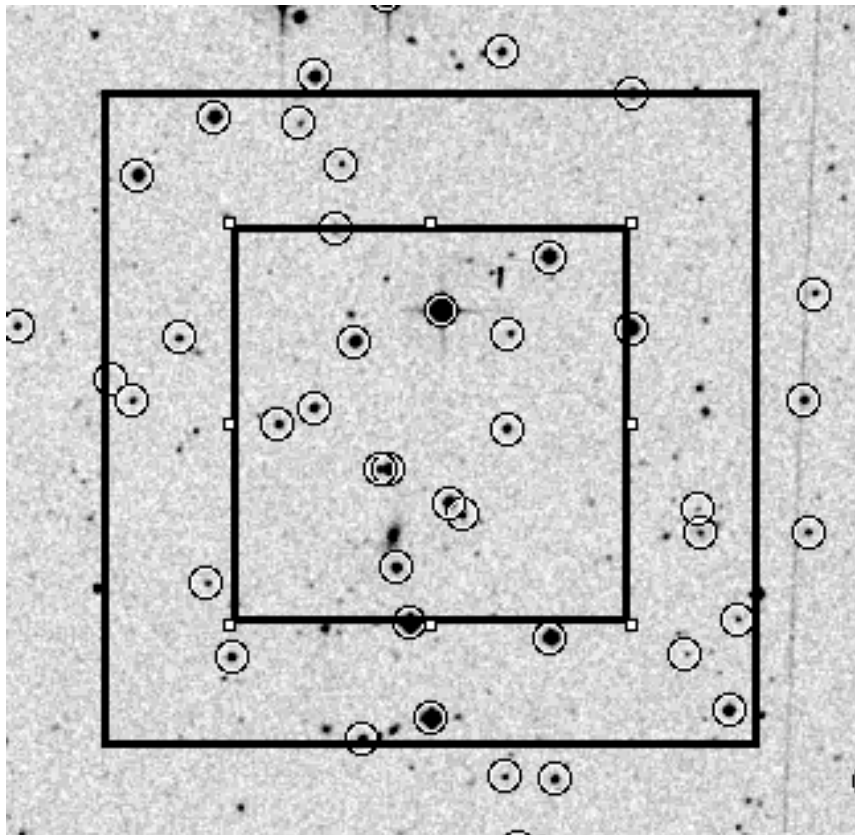


T_{phe}

Field: RA = 00:30:27.1 Dec = -46:28:52 (2000.0)

Pointing: RA = 00:30:12.1 Dec = -46:29:08.7 (2000.0)



The circles show the positions of stars in the Stetson catalogue. The Field refers to that defined by Stetson, whereas the Pointing refers to the pointing as de-

find in the OB.

Band	Number of stars
B:	38
V:	45
R:	42
I:	48

Note: not all stars are necessarily in the FOV of FORS