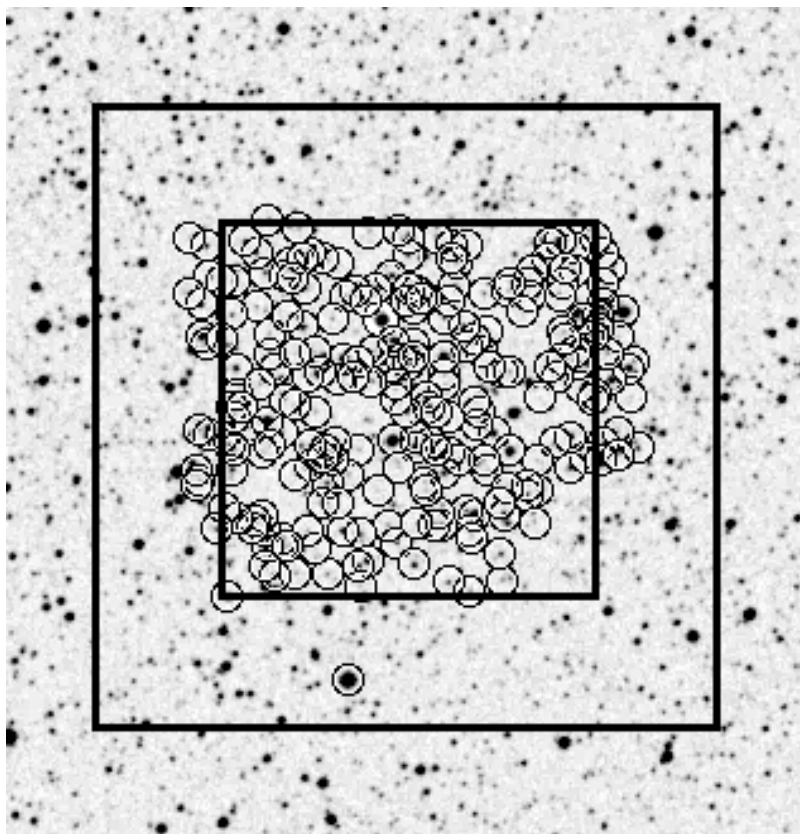


E7

Field: RA = 17:27:05.1 Dec = -44:56:34 (2000.0)

Pointing: RA = 17:27:20.1 Dec = -45:02:28.1 (2000.0)



The circles show the positions of stars in the Stetson catalogue. The Field refers to that defined by Stetson, whereas the Pointing refers to the pointing as defined in the OB.

Band	Number of stars
B:	245
V:	260
R:	198
I:	255

Note: not all stars are necessarily in the FOV of FORS